

GENERATOR

ER2500CX

PARTS CATALOGUE

1

FOREWORD INDEX

1

ENGINE GROUP

2

FRAME GROUP

3

PART NUMBER INDEX

4

PART NAME INDEX

5

Instruction for use of parts catalogue

- **This parts catalogue was prepared based on the latest information available as of July 01, 2014.**
- See the parts catalogue news for any revision that is made after July 01, 2014.
- **Always specify the part number when ordering a part.**
 - Check the model, type, serial numbers, color, maker, and the size as needed before ordering a part.
 - Note that the illustrations (part drawings) can differ from the actual parts in shape. They are given just to help you to refer to the parts.
- **When modifications or additions to this parts catalogue are made, a revised edition will be issued at an appropriate time, with successively progressing revision numbers on the cover. We recommend obtaining such revisions in order to keep your parts catalogue up-to-date at all times. To check whether a parts catalogue revision has been issued, please contact your Honda distributor.**

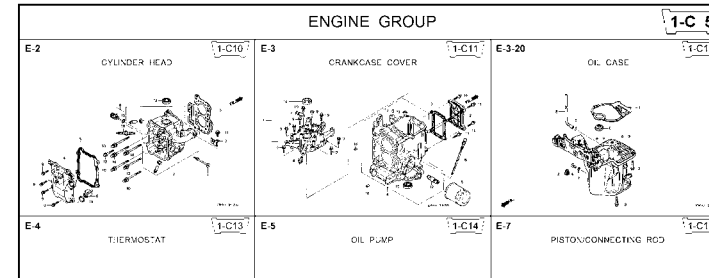
Initial version issue date July 01, 2014
Honda Motor Co., Ltd.

CONTENTS

	Page	Address No.	
● Instruction for use of parts catalogue	1	B 1	1
● How to refer to the part information	2	B 2	
● Part catalogue structure	3	B 3	
● When the parts were revised.....	4	B 4	
● Abbreviations used in the parts catalogue.....	4	B 4	
● How to check the part block and serial numbers.....	5	B 5	
● Models, parts catalogue codes and applicable serial numbers	6	B 6	
● Features of each type.....	7	B 7	
● Fuel hose, general purpose hoses and vinyl hose.....	8	B 8	
● FLAT RATE SERVICE TIME	9	B 9	
● Illustrated index	14	B14	
● ENGINE GROUP.....	17	C 1	2
● FRAME GROUP.....	33	D 1	3
● PART NO. INDEX.....	42	E 1	4
● PART NAME INDEX.....	44	F 1	5

How to refer to the part information

A Reference with "Illustrated index"



B Reference with "Part number index"

PART NO. INDEX					
Part Number	Address	Page	Ref.	Part Number	Address Page
06000				15212-ZW9-000	1-C14 3C
06316-ZW9-000	1-69	88	1	15220-ZW9-003	1-C14 3C
11000				15332-ZW9-000	1-E8 55
11300-ZW9-405	1-C11	27	1	15332-ZW9-A30	1-E11 5E
11300-ZW9-406	1-C11	27	1	15400-PFB-004	1-C11 27
11340-ZW9-000	1-C11	27	2	15422-ZW9-000	1-C14 3C
11342-ZW9-000	1-C11	27	3	15473-881-000	1-C14 3C
11381-ZW9-003	1-C12	28	1	15474-ZW9-000	1-C14 3C
				15611-921-000	1-C10 2E
				15655-ZW9-000	1-C11 27
				16000	
12000				16010-ZV4-005	1-D4 3E
12000-ZW9-405ZA	1-C11	27	4	16011-ZV4-005	1-D4 3E
12155-ZV4-A00	1-C13	29	1	16013-ZW9-003	1-D4 3E
12166-ZW9-000	1-C10	26	1	16016-ZW9-003	1-D4 3E
12209-GB4-681	1-C16	32	1	16016-ZW9-721	1-D4 3E
12210-ZW9-405ZA	1-C10	26	2	16023-ZW9-003	1-D4 3E
12216-ZE2-300	1-E8	55	1	16024-ZV4-650	1-D4 3E
	1-E11	58	1	16028-ZV4-650	1-D4 3E

Address No. 1-C10

E-2 CYLINDER HEAD

Block No.

Ref No.

Ref. No.	Part No.	Description	Reqd. QTY						Serial No.	Parts catalogue code
			9901	9901	1001	1001	1001	1001		
1	12166-ZW9-000	STOPPER, ENGINE SIDE	2	2	2	2	2			
2	12210-ZW9-000ZA	HEAD COMP., CYLINDER	1	1	1	1	1			
3	12251-ZW9-003	GASKET, CYLINDER HEAD	1	1	1	1	1			
4	12310-ZW9-000	COVER COMP., HEAD	1	1	1	1	1			
5	12312-ZW9-000	PACKING, HEAD COVER	1	1	1	1	1			
6	15611-921-000	CAP, OIL (NO GAUGE)	1	1	1	1	1			
7	16617-ZW9-000	HOLDER, CABLE	1	1	1	1	1	SC,SG		
	16617-ZW9-010		1	1	1	1	1	1001801	LHC,LHD	
			1	1	1	1	1		LHC,LHD	
8	35673-ZV5-003	SENSOR ASSY., WATER	1	1	1	1	1			
9	90003-ZW9-000	BOLT, FLANGE, 6X22	4	4	4	4	4			
10	90007-ZW9-003	BOLT, FLANGE, 8X83	6	6	6	6	6			
11	90011-ZW9-000	BOLT, FLANGE, 6X14(CT200)	1	1	1	1	1			
12	90020-ZW9-000	BOLT, FLANGE, 8X40	2	2	2	2	2			
13	91202-KJ9-003	OIL SEAL, 20X32X6	1	1	1	1	1			
14	91301-805-000	O-RING, 26X2.7	1	1	1	1	1			
15	91307-PK2-005	O-RING, 9.5X1.5(HONDA KIKAKI)	1	1	1	1	1			
16	98059-55916	PLUG, SPARK (CR5EH-9)	2	2	2	2	2			
	98059-55926	PLUG, SPARK (U16FER9)	2	2	2	2	2			

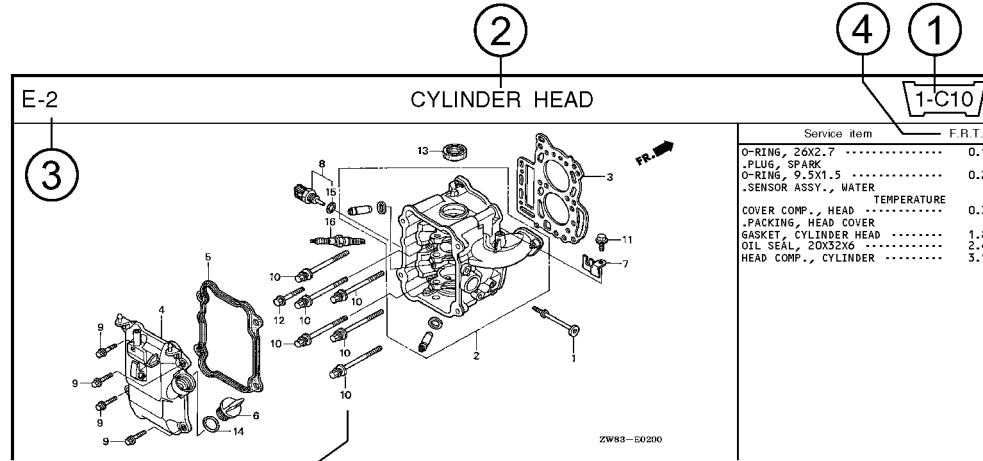
2000.09.20 E

C Reference with "Part name index"

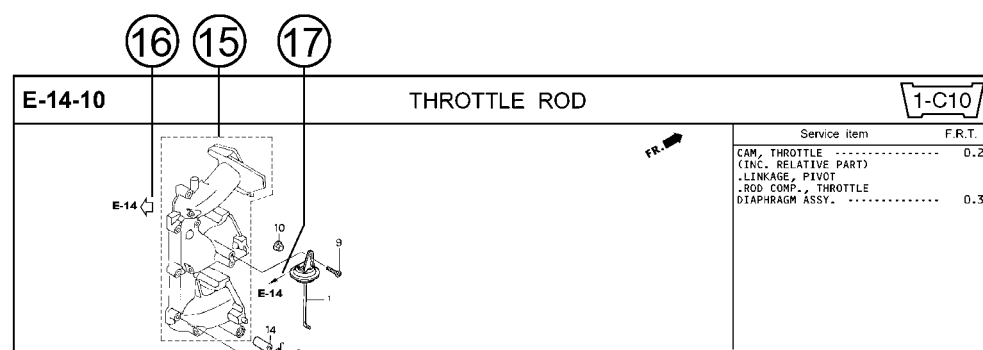
PART NAME INDEX					
Part name	Address	Page	Ref.		
[A]					
ABSORBER, FUEL	1-E15	62	5	BOLT,	
ARMATURE COMP.	1-D11	43	7	BOLT,	
ARM COMP., LINK JOINT	1-G6	85	18	BOLT,	
ARM COMP., SHIFT LINK	1-G6	85	14	BOLT,	
ARM COMP., TILT	1-F15	79	20		
ARM, FUEL PUMP ROCKER	1-C16	32	4		
ARM, REVERSE LOCK	1-F15	79	18		
ARM, SHIFT LINK	1-F11	74	7		
ARM, STOPPER	1-D1	33	12	BOLT,	
ARM, THROTTLE REMOTE	1-F11	74	6		
ARM, VALVE ROCKER	1-C16	32	3		
[B]					
BAG, TOOL, 160MM	1-G5	84	10		
BAND	1-G6	86	37		
BAND B1, WIRE	1-F6	69	1		
BAND, CORD	1-F3	67	18	BOLT,	
BAND, TUBE CLIP, 11MM	1-E15	63	20		
BAND, TUBE CLIP, 12.5MM	1-E15	63	19	BOLT,	

Page No.

Part catalogue structure



Ref. No.	Part No.	Description	Reqd. QTY						Serial No.	Parts catalogue code
			BF 9/9D1	BFP 9/9D1	BF 10D1	BFP 10D1	BF 10B1	BFP 10B1		
1	12166-ZW9-000	STOPPER, ENGINE SIDE	2	2	2	2	2	2		
2	12210-ZW9-000ZA	HEAD COMP., CYLINDER *NHS* DARK GRAY	1	1	1	1	1	1		
3	12251-ZW9-003	GASKET, CYLINDER HEAD	1	1	1	1	1	1		
4	12310-ZW9-000	COVER COMP., HEAD	1	1	1	1	1	1		
5	12312-ZW9-000	PACKING, HEAD COVER	1	1	1	1	1	1		
6	15611-921-000	CAP, OIL (NO GAUGE)	1	1	1	1	1	1		
7	16617-ZW9-000	HOLDER, CABLE	1	1	1	1	1	1	SC,SG	
	16617-ZW9-010		1	1	1	1	1	1	1001800 LHC,LHD	



- ① **Address number**
 - Address No. is provided (in place of the page No.) to help you refer to the part with the part No. or part name.
- ② **Block title** ③ **Block number**
- ④ **Service item/Flat rate time**
- ⑤ **Reference number**
 - Title number marked with the parenthesis or parentheses indicates that it continues from the previous page.
- ⑥ **Part number** ⑦ **Honda color code**
- ⑧ **Description**
- ⑨ **Assemblies**
 - Sections framed with broken lines in the exploded view drawings are available as complete assemblies. (Their individual parts can also be obtained.)
- ⑩ **Color description**
- ⑪ **Note**
 - Notes are shown with the parentheses in the part name column.
- ⑫ **Required quantity**
 - Required QTY shown in the parenthesis or parentheses indicates the optional part.
 - Required QTY marked with "N" Indicates the optional part that should be selected as needed.
 - Required QTY indicates the number of the part used in the block.
- ⑬ **Serial number**
- ⑭ **Type**
 - When the type column is blank, it indicates that the part is applicable to all types.
 - As the type of the actual unit may differ from the "parts catalogue, type" please refer to "Models, types and applicable serial numbers" for confirmation.
- ⑮ **Parts enclosed within a dotted line**
 - Parts enclosed within a dotted line are covered in a different block.
- ⑯ **Hollow arrow**
 - A hollow arrow indicates the block No. for the parts enclosed within a dotted line.
- ⑰ **Solid arrow**
 - A solid arrow indicates the block No. the part in question is connected to.

When the parts were revised

Abbreviations used in the parts catalogue

1



Be sure to check the serial number!!



Ref. No.	Part No.	Description	Reqd. QTY						Serial No.
			BF 9.9D1	BFP 9.9D1	BF 10D1	BFP 10D1	BF 10B1	BFP 10B1	
1	12166-ZW9-000	STOPPER, ENGINE SIDE	2	2	2	2	2	2	
2	12210-ZW9-000ZA	HEAD COMP., CYLINDER							
		NH8.....DARK GRAY	1	1	1	1	1	1	
3	12251-ZW9-003	GASKET, CYLINDER HEAD	1	1	1	1	1	1	
4	12310-ZW9-000	COVER COMP., HEAD	1	1	1	1	1	1	
5	12312-ZW9-000	PACKING, HEAD COVER	1	1	1	1	1	1	
6	15611-921-000	CAP, OIL (NO GAUGE)	1	1	1	1	1	1	
7	16617-ZW9-000	HOLDER, CABLE (###)	1	1	1	1	1	1	
	16617-ZW9-010		1	1	1	1	1	1	



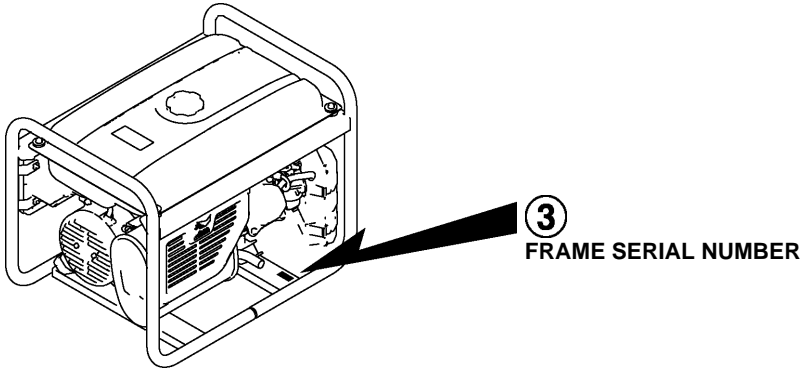
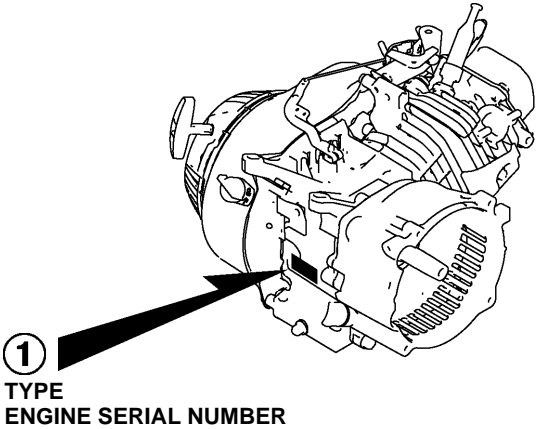
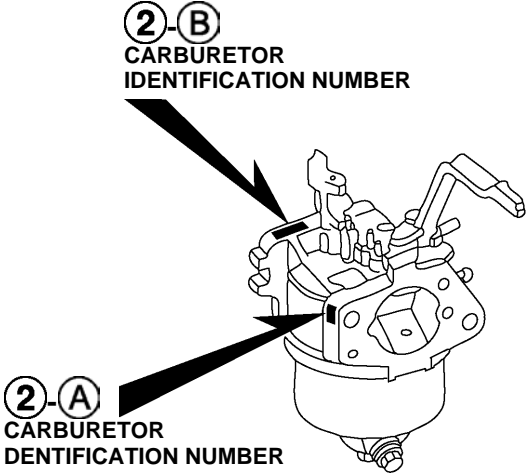
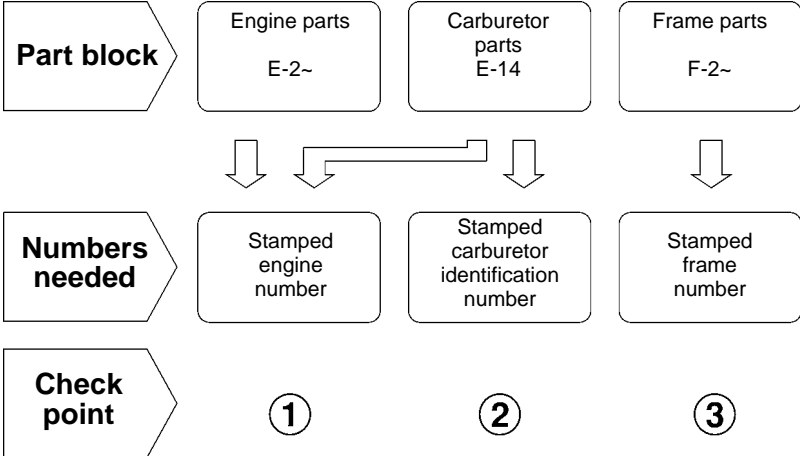
The number has been used from the initial model without revision. When shown at the left side, it is applicable to the models of No.1001801 and the subsequent numbers. When shown at the right side, it is applicable to the models up to No.1001800.

• The parts listed with "###" at the end of the parts name have limited supply period (parts not for sale).

• The following abbreviations are used in the parts name column.

- A Ampere
- A.C. Alternating current
- ASSY. Assembly
- AT. Automatic transmission
- C.D.I. Capacitive discharge ignition
- COMP. ... Complete
- D.C. Direct current
- EX. Exhaust
- G.F.C.I ... Ground fault circuit interruptor
- HEX. Hexagonal
- H.S.T. Hydrostatic transmission
- FR.Front
- IN.Inlet
- L (100L) .Link (100 Links)
- L.Left
- MMMillimeter
- MT.Manual Transmission
- P.T.O.Power take off
- R.Right
- RR.Rear
- STD.Standard
- T (22T) ...Tooth (22 Teeth)
- VVolt
- WWatt

How to check the part block and serial numbers



Models, parts catalogue codes and applicable serial numbers

1

- Models, parts catalogue codes and applicable serial Nos. given in this parts catalogue can be identified as follows.

Model	Type	Parts catalogue type	Engine		Applicable engine serial No.	Applicable frame serial No.	Applicable carburetor identification No.
			Model	Type			
ER2500CX	K	K	GP160H	EY2	GCASH-1000001~	ECCC-1000001~	BE67N A
	L	L		EY3			
	M	M		EY2			
	R	R		EY3			
	S	S					

* Of carburetor identification numbers, only the portions underlined in the example below are used for registration.

BE 67N A KC †
 (A) (B)

Features of each type

- See the following table for the features of each type. (Items in brackets are optional)

Specifications		Model	ER2500CX				
		Type	K	L	M	R	S
Frequency	50Hz		●		●	●	
	60Hz			●			●
Voltage	120V			●			
	220V			●	●	●	
	230V		●				
Consent	16A/250V			●			
	20A/125V			●			
	20A/250V		●			●	●

Fuel hose, general purpose hoses and vinyl hose

1

- The standard part fuel hose, general purpose hose and vinyl hose may be substituted by the coiled bulk part.
- When ordering the standard part fuel hose, general purpose hose and vinyl hose use the bulk part number written in the parts catalog in brackets () underneath the part name.
- When exchanging the hose, cut and use at the specified length as mentioned in the part name.
(For the method of cutting the bulk part, and method of filling out orders etc., please refer to the instructions issued with the bulk part.)

Bulk part number of fuel hose, general purpose hose and vinyl hose.

Example: 9 5 0 0 1 - 7 5 0 0 1 - 5 0 M

Bulk part number:

Refers to the bulk part.

Marking code (fuel hose and general purpose hose)

Change code (Vinyl hose)

Indicates number mark or change sequence, however, the code for the bulk part must be strictly 0 (zero).

Types of code:

- | | | | | | |
|-------------|--|----------------|-------------|--------------|---------------|
| • Fuel hose | 2: Red outside braid
(3 mm inside dia. only) | • General hose | 1: Ash gray | • Vinyl hose | 1: Clear |
| | 5: Black inside braid | | 2: Ash gray | | 2: Black |
| | 3: Red (3 mm inside dia. only) | | 3: Black | | 3: Light red |
| | 4: Ash gray with red stripe
(3 mm inside dia. only) | | 5: Black | | 6: Light red |
| | 6: Black | | | | 7: Pale black |

Lengths:

- 001: 1 m (standard)
003: 3 m
008: 8 m } Application or specification of some parts is not settled.

I.D code: (fuel hose and general purpose hose)

- | | | | | |
|------------|--------------------|--------------------|-----------------------------|-----------------------------|
| 30: 3.0 mm | 50: 5.0 mm | 70: 7.0 mm | 11: 11 mm | 12: 12 (outside dia. 17) mm |
| 35: 3.5 mm | 55: 5.3 mm, 5.5 mm | 75: 7.3 mm, 7.5 mm | 91: 12 (outside dia. 15) mm | 14: 14 mm |
| 45: 4.5 mm | 65: 6.5 mm | 80: 8.0 mm | 92: 12 (outside dia. 16) mm | 17: 17 mm |

ID./OD. code: (vinyl hose)

- | | | | | |
|-------------------------|--------------------------|---------------------------|---------------------------|---------------------------|
| 01: ID. 2.9, OD. 6.8 mm | 12: ID. 5.0, OD. 7.0 mm | 21: ID. 8.0, OD. 9.0 mm | 37: ID. 11.0, OD. 15.0 mm | 50: ID. 16.0, OD. 19.0 mm |
| 03: ID. 3.0, OD. 6.0 mm | 10: ID. 5.0, OD. 8.0 mm | 23: ID. 8.0, OD. 12.0 mm | 38: ID. 12.0, OD. 13.0 mm | 55: ID. 17.5, OD. 20.5 mm |
| 05: ID. 3.5, OD. 6.5 mm | 11: ID. 5.0, OD. 9.0 mm | 25: ID. 9.0, OD. 11.0 mm | 39: ID. 12.0, OD. 14.0 mm | 60: ID. 22.0, OD. 27.0 mm |
| 07: ID. 4.0, OD. 7.0 mm | 14: ID. 6.0, OD. 9.0 mm | 27: ID. 9.0, OD. 13.0 mm | 40: ID. 12.0, OD. 16.0 mm | |
| 08: ID. 4.5, OD. 6.5 mm | 17: ID. 7.0, OD. 9.0 mm | 33: ID. 10.0, OD. 14.0 mm | 43: ID. 13.0, OD. 15.0 mm | |
| 09: ID. 4.5, OD. 8.0 mm | 19: ID. 7.0, OD. 11.0 mm | 36: ID. 11.0, OD. 13.0 mm | 45: ID. 14.0, OD. 18.0 mm | |

Hose type:

- 1: Fuel hose
3: Vinyl hose
5: General hose

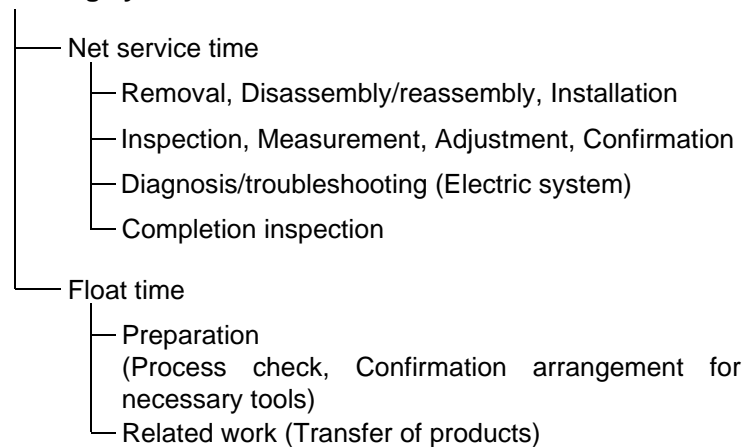
⊙ **CAUTION: It is DANGEROUS to confuse the fuel hose with the general purpose hose or vinyl hose.**

Never use a general purpose hose or vinyl hose in place of a fuel hose or vice versa. Always use the correct bulk part in the parts catalogue, according to the service manual or the instructions issued with the bulk part.

FLAT RATE SERVICE TIME

Flat rate service time (FRT) means the standard time required to service a product, which is listed in this manual to help the dealers control the actual working process and calculate the service charge by using it as a guide.

FRT setting system



* Float time is set by multiplying the net service time by a given coefficient.

Editorial style

The service items shown in the text are listed with the exchange work time for the repair sales parts as the subject. Other representative service items not using repair parts (removal/installation, adjustment, inspection/measuring, and other work) are listed collectively in the list in the preface, classified according to the work.

FRT setting standard

- Decimal system (in unit of 0.1) is adopted to set FRT as it is convenient to calculate the wage.
Example: (0.1) → 6 minutes, (0.2) → 12 minutes
[Labor cost per hour] x [FRT] = [Wage]
- FRT is set with a hand tool.
- Service items and FRT can be subject to change depending on development of tools and service equipment and improvement in service procedure.

Work procedure

- As the work procedure is set with the work time according to the method in the separate Service Manual, refer to this Manual as required.
- Work methods permitting servicing in the shortest time still permitting assurance of safe work and product warranty are used for the setting of service items not listed in the Service Manual.
- Work basically is to be performed by one person, and when two or more people are required, setting is done as the total time for the number of people.
- The set value for the technological level of the workers uses a person with three years of experience in the repair of Honda products as the standard.
- Special tools and service equipment used to set FRT are those specified or recommended in Service Manual.

Service item whose FRT is not presented

- Accessories and service parts that are not listed to use in this manual.
 - Locations with little aging deterioration or breakage during normal use.
 - Service work that can be finished by one touch.
 - Service work that is seldom done (i.e. extremely small causes of trouble and service frequency).
 - Products and parts whose location for installation differs according to its status of use and application.
- * When FRT is not presented, please calculate wages based on appropriate actual work time.

Operation not included of FRT

- Oil and coolant water draining, Waiting time for warming up operation and etc..
- Additional operation that involves removal/installation of standard exterior equipment.
- Indirect time spent for service by visiting the customer, trade-in, and delivery.
- Indirect time required for ordering and delivery of parts.
- Cost for grease, adhesive agent, etc. used for service work.

**Explanation of FRT by using an example
(The example may differ from the actual presented items)**

Ref. No.	L.O.N.	(Relative ref. Number) Description	F.R.T.
①	1111L1	④ VALVE, INTAKE4.1	②
②		⑧ • NOTE: OHV type	⑦
③	1111L1A	⑤ • Includes: Engine removal and installation One head (intake all) add1.4	

- ① Reference No. of the illustration of part that shows location of the replacement work.
- ② FRT is an abbreviation of Flat Rate Time indicating the standard service time required for the replacement.
- ③ LON is an abbreviation of Labor Operation Number, and it is a classification of the service items by the work unit code.

The same operation code is used regardless of the models.

Standard operation is indicated with 6 digits code, and additional operation is indicated with 7 digits code.

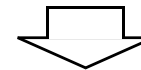
- ④ Indicating the intake valve replacement and FRT4.1.
- ⑤ Indicating FRT1.4 that will be added when additional operation (whole intake side of one cylinder head) is done in association with intake valve replacement.

- ⑥ Indicating work condition or application condition of the service item.
- ⑦ Indicating work contents that are included in the service item.
- ⑧ Indicating a reference No. whose operation and time are the same as FRT4.1 for the intake valve.

(The application range is limited to the service items without an LON setting within a same block.)

**How to refer to the service item by using the sample
(intake valve replacement)**

Open to the page of the block where the intake valve's spare part illustration is shown.



Look for the intake valve illustration, and refer to the service item and FRT that agree with the reference No.

Indication mark for the listing of service items that continues to the following page

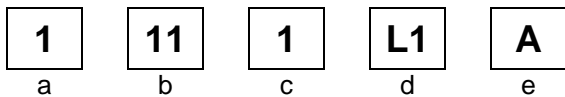
Ref. No.	L.O.N.	(Relative ref. Number) Description	F.R.T.
2	1111L1	VALVE, INTAKE	4.1
	.	.	.
	.	.	.

+
Mark indicated at the last line.

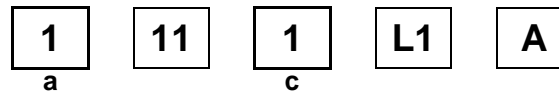
Indication of the block with no setting of FRT

Ref. No.	L.O.N.	(Relative ref. Number) Description	F.R.T.
NO INFORMATION			

• LON code system



- a) Category code..... Engine
- b) Location/function code..... Engine upper
- c) Operation code..... Replace
- d) Operation sequence number (Unit code can be shown with alphabet)
..... Intake valve
(No regular rule of code)
- e) Additional code One head (intake all)
(No regular rule of code)



a) Category codes and classification

Code	Category
1	Engine
2	Power drive
3	Fuel & Exhaust
4	Frame & Body
5	Steering
6	Electrical
7	Axle & Brake
8	Control system
9	-
0	Attachments

c) Operation codes and classification

Code	Operation category
1	Replace, Removal/Installation, Change
2	Overhaul
3	Adjust, Rotation
4	(Paint-related work: Top-coat)
5	Test, Inspect/diagnose, Measurement
6	(Overhaul-related work: Rebore)
7	(Overhaul-related work: Reseal)
8	(Resurface)
9	(Paint-related work: Refinish)
0	Repair, Cleaning, Air bleeding

Major service items without using spare parts
Removal/Installation, Adjustment, Inspection/Measurement, Overhaul, Other work

E: Engine, T: Transmission, D: Drive system, B: Body and related parts

• Removal/Installation

Set with the parts configuration in the status of being removed from the product.

	LON	DESCRIPTION	FRT
E	1001A0	ENGINE AND GENERATOR-REMOVAL/INSTALLATION	0.4

• Adjustment

	LON	DESCRIPTION	FRT
E	1113A1	VALVE CLEARANCE-ADJUSTMENT NOTE: For 1 product	0.4
	1163A0	CONTROL, THROTTLE/GOVERNOR-ADJUSTMENT	0.2
	3113A2	CARBURETOR IDLE-ADJUSTMENT	0.2

• Inspection/Measurement

	LON	DESCRIPTION	FRT
E	1105A0	ENGINE OIL-INSPECTION	0.1
	1115A0	CYLINDER COMPRESSION-TEST	0.2

• Overhaul

Work condition: The required Measurements, inspections, adjustments, and cleaning/washing of each part are performed, including the main body removal/installation work and the replacement of defective parts.

	LON	DESCRIPTION	FRT
E	3112A0	CARBURETOR-OVERHAUL INCLUDES: All necessary adjustment	0.6

• Other work

	LON	DESCRIPTION	FRT
E	1101E1	ENGINE OIL-CHANGE INCLUDES: Engine oil-inspection	0.2
	3120A0	AIR CLEANER-CLEANING INCLUDES: Air cleaner-inspection	0.2
	6140A0	SPARK PLUG-ADJUSTMENT/CLEANING INCLUDES: Spark plug check NOTE: For 1 product	0.1

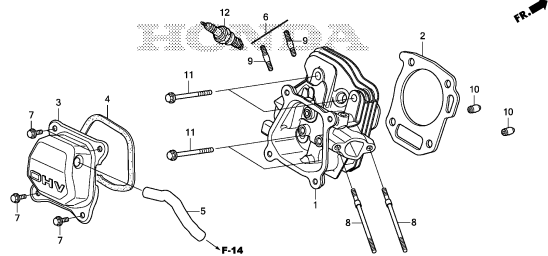
ENGINE GROUP

B14

E-2

CYLINDER HEAD

C 1

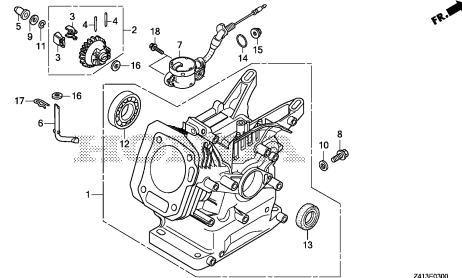


Z413E0200

E-3

CYLINDER BARREL

C 2

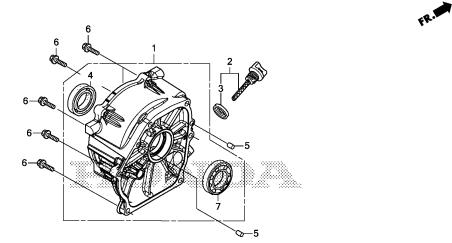


Z413E0300

E-6

CRANKCASE COVER

C 3

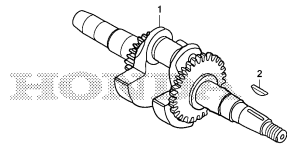


Z413E0600

E-7

CRANKSHAFT

C 4

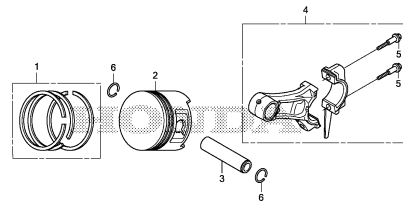


Z413E0700

E-8

PISTON

C 5

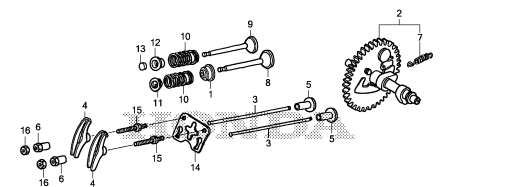


Z413E0800

E-9

CAMSHAFT

C 6

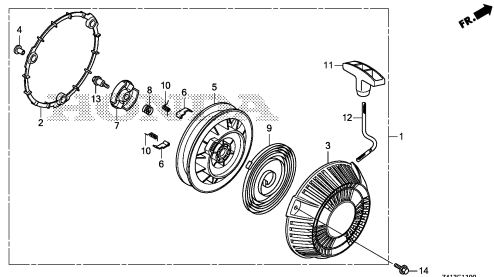


Z413E0900

E-11

RECOIL STARTER

C 9

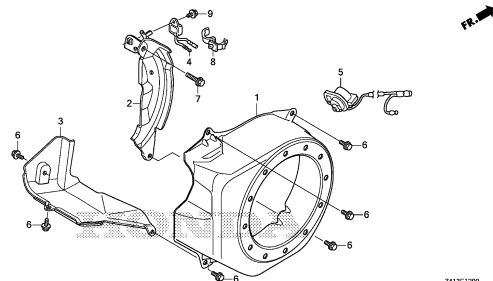


Z413E1100

E-12

FAN COVER

C10

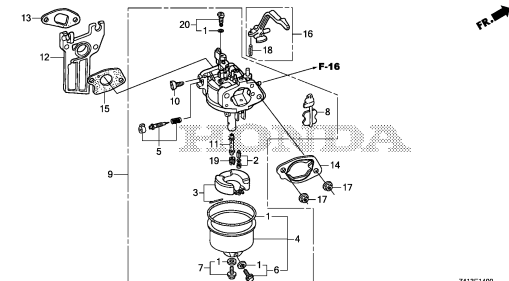


Z413E1200

E-14

CARBURETOR

C11



Z413E1400

2

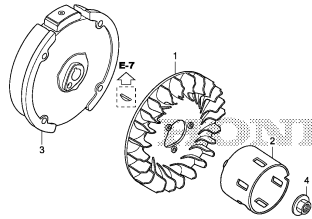
ENGINE GROUP

B15

E-19

FLYWHEEL

C12

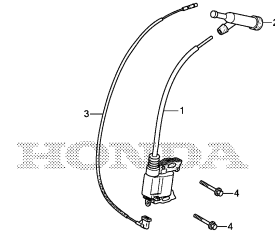


Z413E1900

E-20

IGNITION COIL

C13

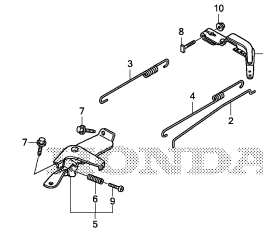


Z413E2000

E-22

CONTROL

C14

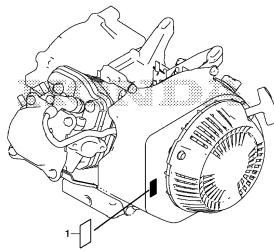


Z413E2200

E-28

LABEL

C15

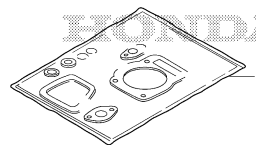


Z413E2800

EOP-1

GASKET KIT

C16



Z413X0100

2

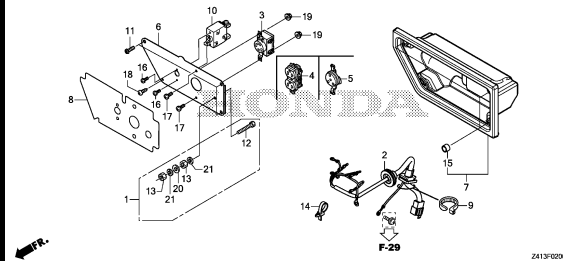
FRAME GROUP

B16

F-2

CONTROL PANEL

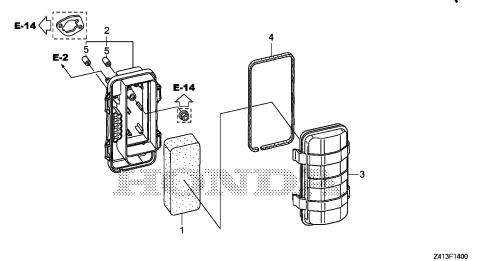
D 1



F-14

AIR CLEANER

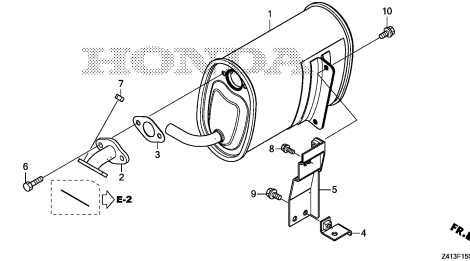
D 3



F-15

MUFFLER

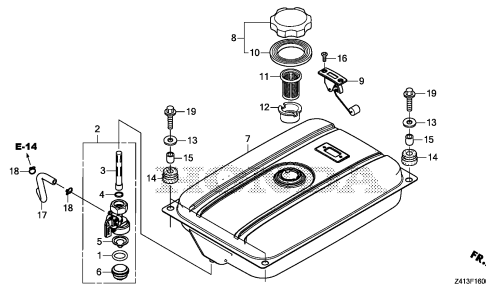
D 4



F-16

FUEL TANK

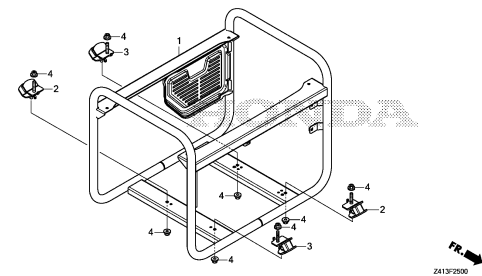
D 5



F-25

FRAME

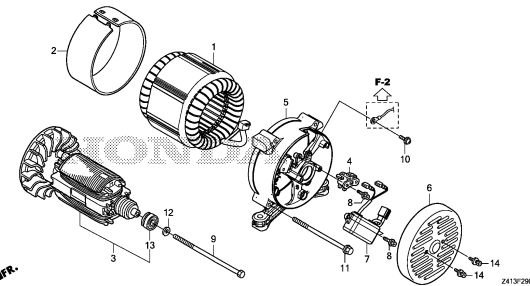
D 6



F-29

ROTOR/STATOR

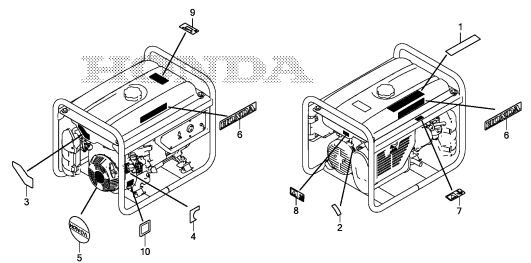
D 7



F-31

LABEL

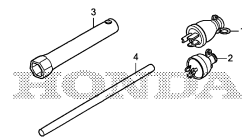
D 8



F-32

TOOL

D 9

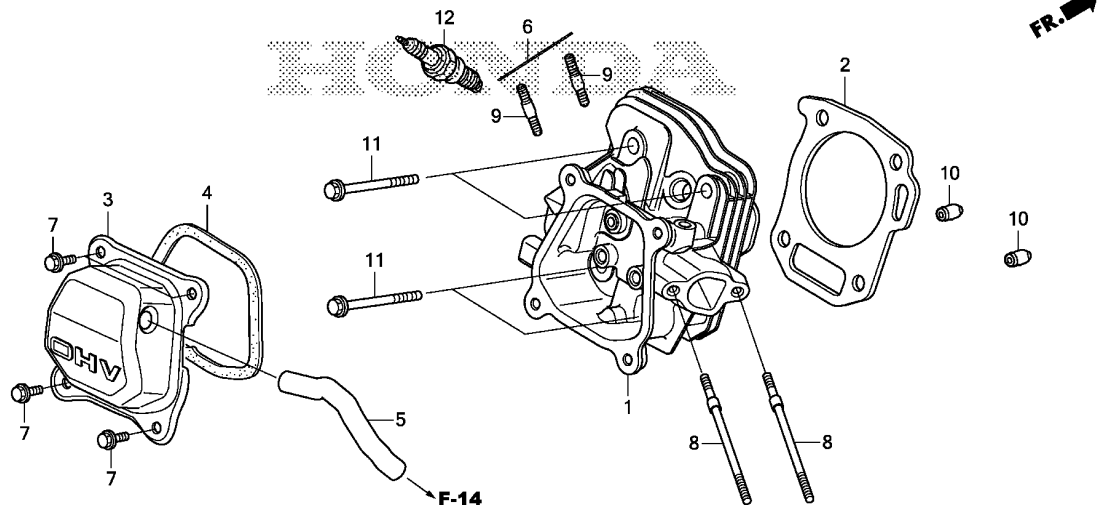


3

E-2

CYLINDER HEAD

C 1

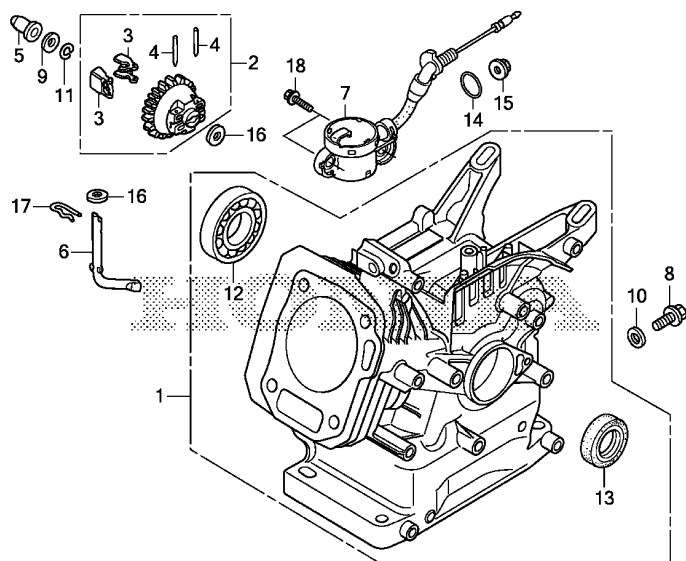


Z413E0200

Ref. No.	L.O.N.	(Relative ref. Number) Description	F.R.T.
1	1111N3	HEAD, CYLINDERINCLUDES: Valve clearance adjustment and reface	1.1
2	1111N4	GASKET, CYLINDER HEAD (4)	0.7
3	1111D5	CYLINDER HEAD COVER AND/OR PACKING	0.2
5	1111K5	TUBE, BREATHER	0.1
6	3131B4	GASKET, EXHAUST MUFFLER	0.2
12	6141C1	PLUG, SPARK	0.1
.INCLUDES: Spark plug check			

Ref. No.	Part No.	Description	Reqd. QTY		Serial No.	Parts catalogue code
			ER	CX		
1	12210-Z1T-405	HEAD COMP., CYLINDER	1			
2	12251-ZL0-003	GASKET, CYLINDER HEAD (NIPPON LEAKLESS)	1			
3	12310-ZE1-020	COVER COMP., HEAD	1			
4	12312-Z1T-701	PACKING, HEAD COVER (NINGBO SIL GASKET)	1			
5	15721-Z1T-D40	TUBE, BREATHER	1			
6	18381-Z1T-701	GASKET, MUFFLER (NINGBO SIL GASKET)	1			
7	90013-883-000	BOLT, FLANGE, 6X12(CT200) ...	4			
8	90043-ZDK-D10	BOLT, STUD, 6X103.5	2			
9	90047-ZDK-000	BOLT, STUD, 8X32	2			
10	94301-10160	DOWEL PIN, 10X16	2			
11	95701-08060-00	BOLT, FLANGE, 8X60	4			
12	98079-55846	PLUG, SPARK (BPR5ES) (NGK) ...	(1)			
	98079-55855	PLUG, SPARK (W16EPR-U) (DENSO)	(1)			
	98079-56846	PLUG, SPARK (BPR6ES) (NGK)	1			
	98079-56855	PLUG, SPARK (W20EPR-U) (DENSO)	1			

2

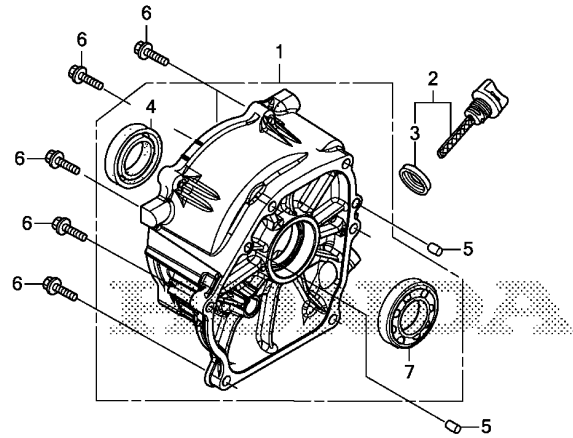


FR. →

Z413E0300

Ref. No.	L.O.N.	(Relative ref. Number) Description	F.R.T.
1	1101A0	BARREL, CYLINDERINCLUDES: Engine removal and installation	2.6
2	1161C4	GOVERNOR ASSEMBLYINCLUDES: Engine removal and installation	2.1
5	1161B6	SLIDER, GOVERNORINCLUDES: Engine removal and installation	2.1
6	1161B4	SHAFT, GOVERNOR ARMINCLUDES: Engine removal and installation	2.0
7	6151E8	SWITCH, OIL LEVELINCLUDES: Engine removal and installation	1.4
12	1101A7	BEARING, CRANKSHAFT :RIGHTINCLUDES: Engine removal and installation	2.3
13	1101E3	OIL SEAL, CRANKSHAFT :RIGHT .. .INCLUDES: Engine removal and installation	2.2

Ref. No.	Part No.	Description	Reqd. QTY		Serial No.	Parts catalogue code
			ER 2500 CX			
1	12000-ZDK-407	BARREL ASSY., CYLINDER	1			
2	16510-Z1T-000	GOVERNOR ASSY.	1			
3	16511-ZE1-000	WEIGHT, GOVERNOR	2			
4	16513-ZE1-000	PIN, GOVERNOR WEIGHT	2			
5	16531-Z1T-000	SLIDER, GOVERNOR	1			
6	16541-Z1T-000	SHAFT, GOVERNOR ARM	1			
7	35480-Z0T-003	SWITCH ASSY., OIL LEVEL	1			
8	90131-ZE1-000	BOLT, DRAIN PLUG	1			
9	90451-Z1T-000	WASHER, THRUST, 6MM	1			
10	90601-ZE1-000	WASHER, DRAIN PLUG, 10.2MM ..	1			
11	90602-ZE1-000	CLIP, GOVERNOR HOLDER	1			
12	91001-Z1T-003	BEARING, RADIAL BALL, 6205	1			
		(NSK)	1			
	91001-ZF1-003	BEARING, RADIAL BALL(6205TMB)	1			
		(NTN)	1			
	91001-ZF1-004	BEARING, RADIAL BALL(6205SH)	1			
		(KOYO)	1			
13	91202-Z1T-003	OIL SEAL, 25X41X6	1			
14	91353-Z7E-003	O-RING, 14MM	1			
15	94050-10000	NUT, FLANGE, 10MM	1			
16	94101-06800	WASHER, PLAIN, 6MM	2			
17	94251-08000	PIN, LOCK, 8MM	1			
18	95701-06012-00	BOLT, FLANGE, 6X12	2			



FR. →

Z413E0600

Ref. No.	L.O.N.	(Relative ref. Number) Description	F.R.T.
1	1101F1	COVER, CRANKCASEINCLUDES: Engine removal and installation	1.1
4	1101C0	OIL SEAL, CRANKSHAFT :LEFTINCLUDES: Engine removal and installation	1.2
7	1101A5	BEARING, CRANKSHAFT :LEFTINCLUDES: Engine removal and installation	1.3

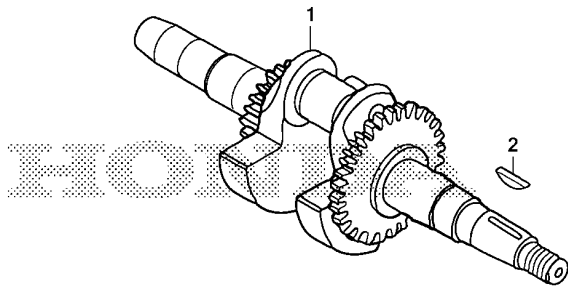
Ref. No.	Part No.	Description	Reqd. QTY		Serial No.	Parts catalogue code
			ER	CX		
1	11300-ZDK-D10	COVER ASSY., CRANKCASE	1			
2	15600-Z1T-000	CAP ASSY., OIL FILLER	1			
3	15625-Z1T-000	PACKING, OIL FILLER CAP	1			
4	91202-Z1T-003	OIL SEAL, 25X41X6	1			
5	94301-08140	DOWEL PIN, 8X14	2			
6	95701-08032-00	BOLT, FLANGE, 8X32	6			
7	96100-62050-00	BEARING, RADIAL BALL, 6205 ..	1			



E-7

CRANKSHAFT

C 4

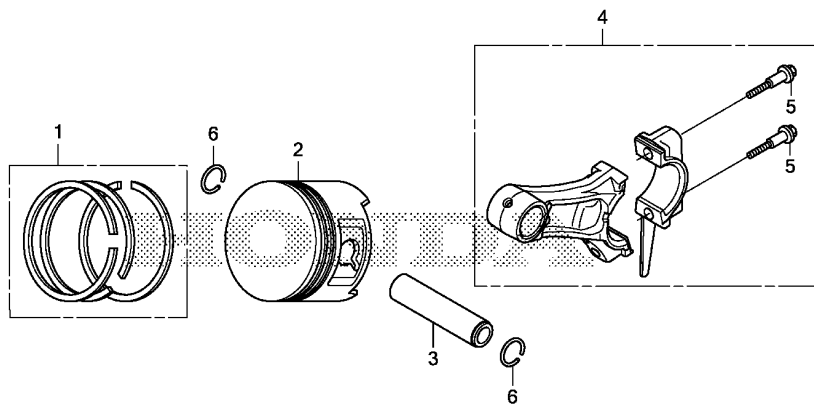


Z413E0700

Ref. No.	L.O.N.	(Relative ref. Number) Description	F.R.T.
1	1101F0	CRANKSHAFT INCLUDES: Engine removal and installation	2.1

Ref. No.	Part No.	Description	Reqd. QTY	Serial No.	Parts catalogue code
			ER 2500 CX		
1	13310-Z1T-F00	CRANKSHAFT COMP.	1		
2	13331-357-000	KEY, SPECIAL WOODRUFF, 25X18	1		

2

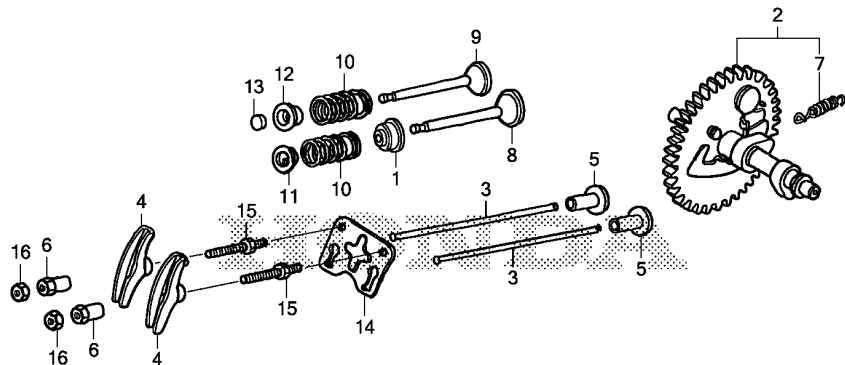


Z413E0800

Ref. No.	L.O.N.	(Relative ref. Number) Description	F.R.T.
2	1111R1	(1,3,4) PISTON AND/OR RING SET AND/OR BEARING AND/OR RODINCLUDES: Engine removal and installation .INCLUDES: Inspection/Measurement/Cleaning	2.2

Ref. No.	Part No.	Description	Reqd. QTY	Serial No.	Parts catalogue code
			ER 2500 CX		
1	13010-Z4K-004	RING SET, PISTON(STD.) (TPR) -	1		
	13010-Z4P-003	RING SET, PISTON(STD.) (RIKEN)	1		
	13011-Z4K-004	RING SET, PISTON(0.25) (TPR) -	(1)		
	13011-Z4P-003	RING SET, PISTON(0.25) (RIKEN)	(1)		
	13012-Z4K-004	RING SET, PISTON(0.50) (TPR) -	(1)		
	13012-Z4P-003	RING SET, PISTON(0.50) (RIKEN)	(1)		
	13013-Z4K-004	RING SET, PISTON(0.75) (TPR) -	(1)		
	13013-Z4P-003	RING SET, PISTON(0.75) (RIKEN)	(1)		
2	13101-Z1T-010	PISTON(STD.) (JIALING-HONDA) -	1		
	13102-Z1T-000	PISTON(0.25)	(1)		
	13103-Z1T-000	PISTON(0.50)	(1)		
	13104-Z1T-000	PISTON(0.75)	(1)		
3	13111-Z1T-000	PIN, PISTON	1		
4	13200-Z1T-600	ROD ASSY., CONNECTING(JLH) ..	1		
5	90001-Z1T-000	BOLT, CONNECTING ROD	2		
6	90551-ZE1-000	CLIP, PISTON PIN, 18MM	2		

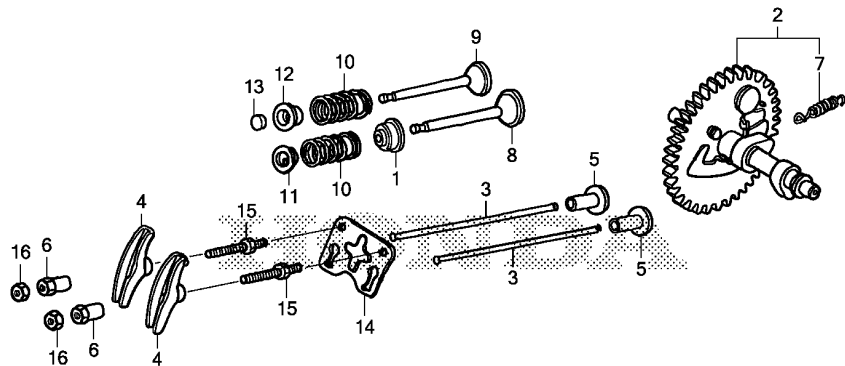




Z413E0900

Ref. No.	L.O.N.	(Relative ref. Number) Description	F.R.T.
1	1111K2	SEAL, INTAKE VALVE STEMINCLUDES: Valve clearance adjustment (7)	0.8
2	1111C2	CAMSHAFTINCLUDES: Engine removal and installation .INCLUDES: Valve clearance adjustment	1.3
3	1111L6	ROD, PUSH :INTAKEINCLUDES: Valve clearance adjustment	0.2
	1111L7	ROD, PUSH :EXHAUSTINCLUDES: Valve clearance adjustment	0.2
	1111L8	ROD, PUSH :BOTHINCLUDES: Valve clearance adjustment	0.3
4	1111A2	ARM, ROCKER :INTAKEINCLUDES: Valve clearance adjustment	0.2
	1111A2A	.Replace exhaust rocker arm add	0.1
+	1111A1	ARM, ROCKER :EXHAUST	0.2

Ref. No.	Part No.	Description	Reqd. QTY		Serial No.	Parts catalogue code
			ER	2500 CX		
1	12209-ZH8-003	SEAL, VALVE STEM	1			
2	14100-Z1T-810	CAMSHAFT ASSY.(JLH)	1			
3	14410-ZE1-010	ROD, PUSH	2			
4	14431-ZE1-000	ARM, VALVE ROCKER	2			
5	14441-ZE1-010	LIFTER, VALVE	2			
6	14451-Z7E-000	PIVOT, ROCKER ARM	2			
7	14568-ZE1-000	SPRING, WEIGHT RETURN	1			
8	14711-ZF1-000	VALVE, IN.	1			
9	14721-ZF1-000	VALVE, EX.	1			
10	14751-ZF1-000	SPRING, VALVE	2			
11	14771-ZE1-000	RETAINER, IN. VALVE SPRING ..	1			
12	14773-ZE1-000	RETAINER, EX. VALVE SPRING ..	1			
13	14781-ZE1-000	ROTATOR, VALVE	1			
14	14791-ZE1-010	PLATE, PUSH ROD GUIDE	1			
15	90012-ZE0-010	BOLT, PIVOT, 8MM	2			
16	90206-ZE1-000	NUT, PIVOT ADJUSTING	2			

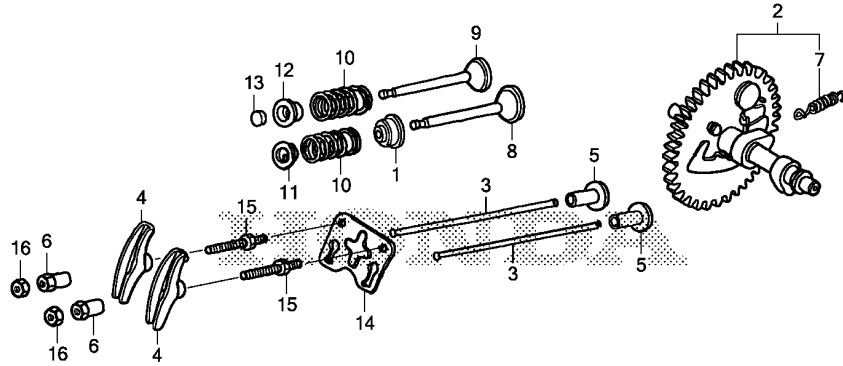


Z413E0900

Ref. No.	L.O.N.	(Relative ref. Number) Description	F.R.T.
+ 4		.INCLUDES: Valve clearance adjustment	
1111A1A		.Replace intake rocker arm add	0.1
5 1111L9		LIFTER, VALVE :INTAKE	1.3
		.INCLUDES: Engine removal and installation	
		.INCLUDES: Valve clearance adjustment	
1111M0		LIFTER, VALVE :EXHAUST	1.3
		.INCLUDES: Engine removal and installation	
		.INCLUDES: Valve clearance adjustment	
1111M1		LIFTER, VALVE :BOTH	1.3
		.INCLUDES: Engine removal and installation	
		.INCLUDES: Valve clearance adjustment	
8 1111L1		VALVE, INTAKE	0.9
		.INCLUDES: Valve clearance adjustment and reface	
		.Replace intake and exhaust all add	0.2
+ 9 1111L0		VALVE, EXHAUST	0.9

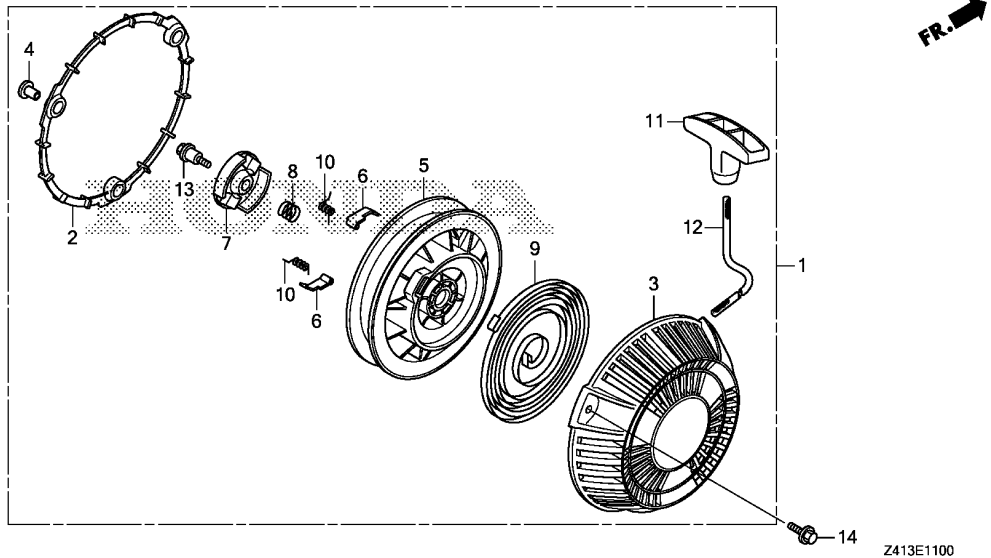


FR. →



Z413E0900

Ref. No.	L.O.N.	(Relative ref. Number) Description	F.R.T.
+ 9		.INCLUDES: Valve clearance adjustment and reface	
1111L0E		.Replace intake and exhaust all add	0.2
10	1111P3	SPRING, VALVE :INTAKE	0.8
		.INCLUDES: Valve clearance adjustment	
1111P3A		.Replace intake and exhaust all add	0.1
1111P4		SPRING, VALVE :EXHAUST	0.8
		.INCLUDES: Valve clearance adjustment	
1111P4A		.Replace intake and exhaust all add	0.1
13	1111J7	ROTATOR, VALVE	0.2
		.INCLUDES: Valve clearance adjustment	

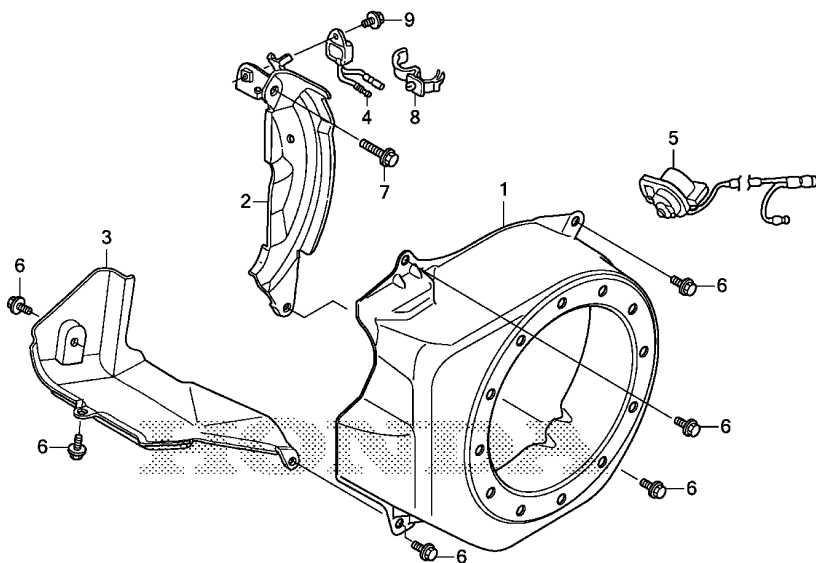


Ref. No.	L.O.N.	(Relative ref. Number) Description	F.R.T.
1	1121B9	STARTER, RECOIL	0.1
5	1121B1	REEL, RECOIL STARTER	0.3
6	1121B0	(10) STARTER RATCHET AND/OR SPRING	0.2
7	1121A4	(8) GUIDE, RATCHET	0.2
9	1121B7	SPRING, RECOIL STARTER RETURN	0.3
11	1121A3	GRIP, RECOIL STARTER	0.1
12	1121B3	ROPE, RECOIL STARTER	0.3

.NOTE: Same time for two units

Ref. No.	Part No.	Description	Reqd. QTY		Serial No.	Parts catalogue code
			ER	CX		
1	28400-ZDL-003	STARTER ASSY., RECOIL	1			
2	28405-ZDL-003	SPACER, RECOIL STARTER MOUNTING	1			
3	28414-ZDK-003	CASE, RECOIL STARTER	1			
4	28417-ZDL-003	COLLAR, RECOIL STARTER	3			
5	28421-ZDK-003	REEL, RECOIL STARTER	1			
6	28422-ZDK-003	RATCHET, STARTER	2			
7	28433-ZDK-003	GUIDE, RATCHET	1			
8	28441-ZDK-003	SPRING, FRICTION	1			
9	28442-ZDK-003	SPRING, RECOIL STARTER	1			
10	28443-ZDK-003	SPRING, RETURN	2			
11	28461-ZDK-003	KNOB, RECOIL STARTER	1			
12	28462-ZDK-003	ROPE, RECOIL STARTER	1			
13	90003-ZDK-003	SCREW, SETTING	1			
14	95701-06025-00	BOLT, FLANGE, 6X25	3			





FR. →

Z413E1200

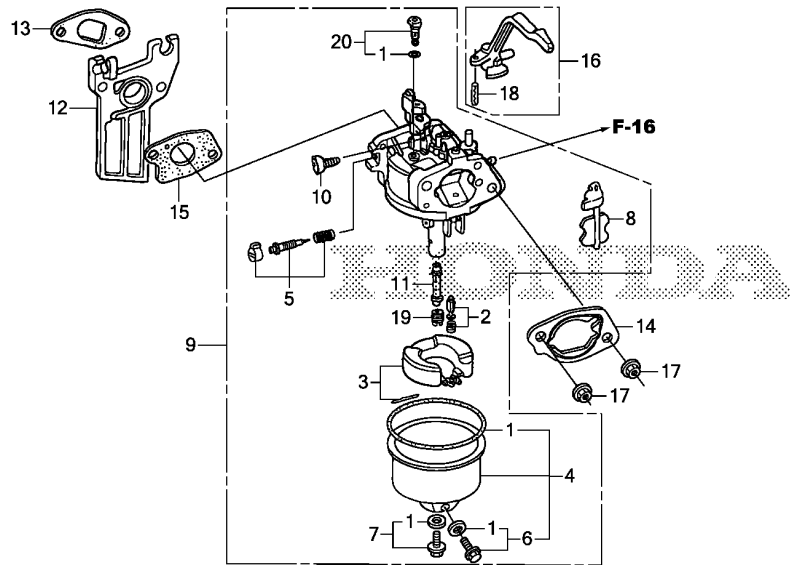
Ref. No.	L.O.N.	(Relative ref. Number) Description	F.R.T.
1	1141G8	COVER, ENGINE COOLING FAN	0.2
2	1121A7	PLATE, SIDE	0.3
3	4141E3	SHROUD, ENGINE	0.2
4	6151K2	ALERT UNIT, GENERATOR OIL	0.1
5	6151D9	SWITCH, ENGINE STOP	0.2

Ref. No.	Part No.	Description	Reqd. QTY	Serial No.	Parts catalogue code
			ER 2500 CX		
1	19610-ZDK-000ZA	COVER COMP., FAN *NH31*.....MCKINLEY WHITE	1		
2	19611-ZH8-810	PLATE COMP., SIDE(OIL ALERT)	1		
3	19631-ZDK-000	SHROUD	1		
4	34150-ZH7-023	ALERT UNIT, OIL	1		
5	36100-ZF6-P82	SWITCH ASSY., ENGINE STOP ...	1		
6	90013-883-000	BOLT, FLANGE, 6X12(CT200) ...	6		
7	90022-888-010	BOLT, FLANGE, 6X20(CT200) ...	1		
8	90601-Z1T-003	CLIP, HARNESS	1		
9	95701-06008-00	BOLT, FLANGE, 6X8	1		

E-14

CARBURETOR

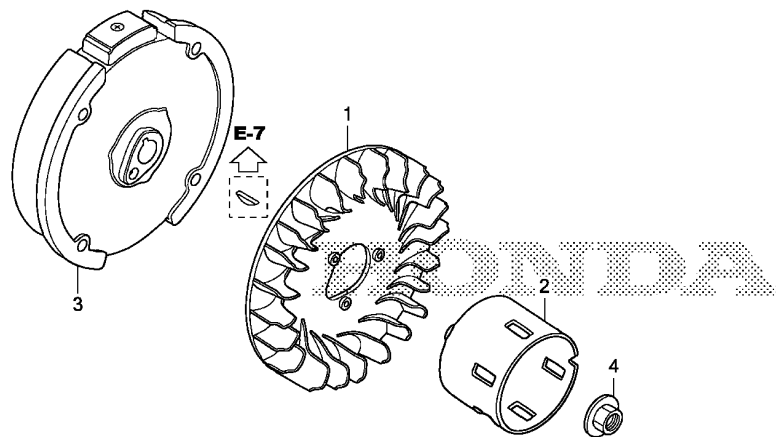
C11



Ref. No.	L.O.N.	(Relative ref. Number) Description	F.R.T.
1	3111B1	GASKET SET, CARBURETOR	0.4
2	3111E1	FLOAT VALVE SET AND/OR FLOAT SET	0.4
4	3111A3	FLOAT CHAMBER SET AND/OR GASKET	0.3
5	3111D7	SCREW SET, PILOT	0.3
8	8101C5	CHOKE SET, CARBURETOR	0.3
9	3111F3	CARBURETOR (13)	0.3
12	3111C0	CARBURETOR INSULATOR AND/OR PACKING	0.3
14	3111D9	SPACER, CARBURETOR	0.2
15	3111C8	PACKING, CARBURETOR	0.3
16	8101F9	LEVER, CARBURETOR CHOKE (11)	0.2
19	3111C3	JET, MAIN	0.4

Ref. No.	Part No.	Description	Reqd. QTY		Serial No.	Parts catalogue code
			ER	CX		
1	16010-ZB1-015	GASKET SET	1			
2	16011-ZE0-005	VALVE SET, FLOAT	1			
3	16013-Z0S-B01	FLOAT SET	1			
4	16015-ZE0-831	CHAMBER SET, FLOAT	1			
5	16016-ZH7-W01	SCREW SET, PILOT	1			
6	16024-ZE1-811	SCREW SET, DRAIN	1			
7	16028-ZE0-005	SCREW SET	1			
8	16044-ZE0-005	CHOKE SET	1			
9	16100-Z1T-D41	CARBURETOR ASSY. (BE67N A)	1			
10	16124-ZE0-005	SCREW, THROTTLE STOP	1			
11	16166-ZH8-E80	NOZZLE, MAIN	1			
12	16211-Z1T-000	INSULATOR, CARBURETOR (JLH)	1			
13	16212-Z1T-701	PACKING, INSULATOR (NINGBO SIL GASKET)	1			
14	16220-ZE1-020	SPACER COMP., CARBURETOR	1			
15	16221-Z1T-701	PACKING, CARBURETOR (NINGBO SIL GASKET)	1			
16	16610-ZB2-000	LEVER COMP., CHOKE	1			
17	94050-06080	NUT, FLANGE, 6MM	2			
18	94305-20122	PIN, SPRING, 2X12	1			
19	99101-ZH8-0680	JET, MAIN, #68	(1)			
	99101-ZH8-0700	JET, MAIN, #70	(1)			
	99101-ZH8-0720	JET, MAIN, #72	1			
20	99204-ZE0-0350	JET SET, PILOT, #35	1			





Z413E1900

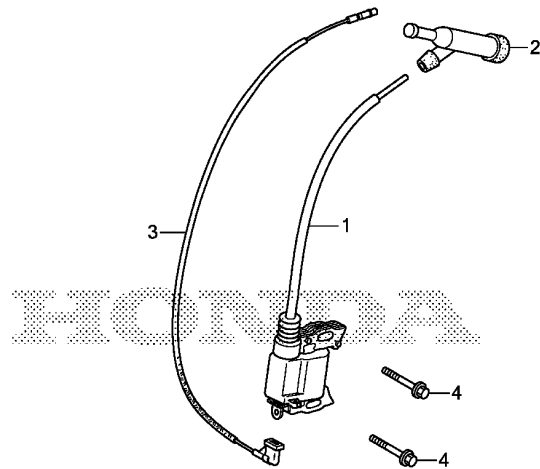
Ref. No.	L.O.N.	(Relative ref. Number) Description	F.R.T.
1	1141G7	FAN, ENGINE COOLING	0.2
2	1121A9	PULLEY, RECOIL STARTER	0.2
3	2161B5	FLYWHEEL	0.3

Ref. No.	Part No.	Description	Reqd. QTY		Serial No.	Parts catalogue code
			ER	CX		
1	19511-Z1T-000	FAN, COOLING	1			
2	28451-ZDL-003	PULLEY, STARTER	1			
3	31110-Z1T-004	FLYWHEEL COMP.(YUXIN)	1			
4	90201-Z1T-000	NUT, SPECIAL, 14MM	1			

E-20

IGNITION COIL

C13



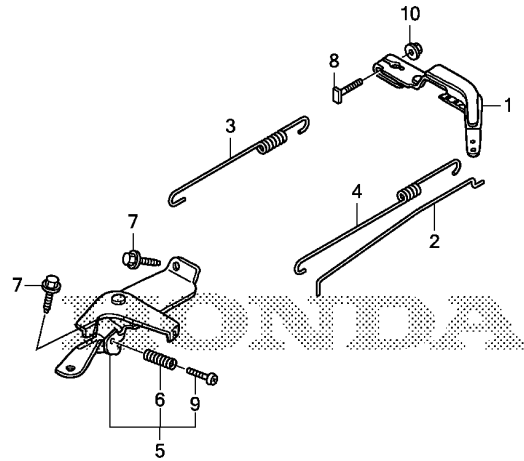
Z413E2000

Ref. No.	L.O.N.	(Relative ref. Number) Description	F.R.T.
1	6141A5	COIL, IGNITION(ONE)	0.3
2	6141B8	TERMINAL, HIGH TENSION	0.1
3	6111B3	CORD, STOP SWITCH	0.4

Ref. No.	Part No.	Description	Reqd. QTY		Serial No.	Parts catalogue code
			ER	2500 CX		
1	30500-ZDK-004	COIL ASSY., IGNITION	1			
2	30700-ZDK-004	CAP ASSY., NOISE SUPPRESSOR .	1			
3	32195-ZDK-004	CORD, STOP SWITCH	1			
4	90121-952-000	BOLT, FLANGE, 6X25(CT200) ...	2			

2

FR. →



Z413E2200

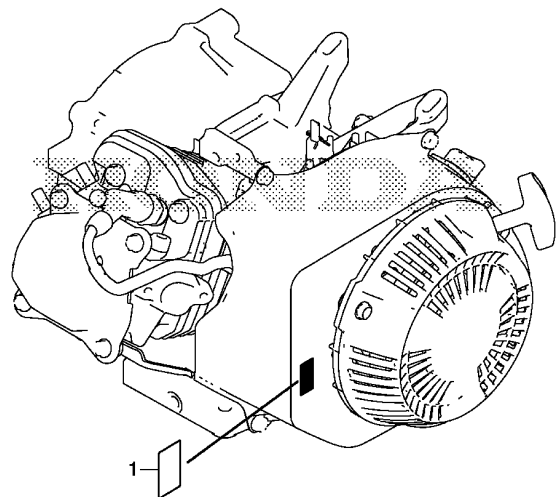
Ref. No.	L.O.N.	(Relative ref. Number) Description	F.R.T.
1	1161A0	ARM, GOVERNOR	0.3
2	1161B1	ROD, GOVERNOR	0.3
3	1161C5	SPRING, GOVERNOR	0.3
4	1161C2	SPRING, THROTTLE RETURN	0.3
5	1161A5	CONTROL, THROTTLE/GOVERNOR ...	0.3

Ref. No.	Part No.	Description	Reqd. QTY	Serial No.	Parts catalogue code
			ER 2500 CX		
1	16551-ZE0-010	ARM, GOVERNOR	1		
2	16555-ZE1-000	ROD, GOVERNOR	1		
3	16561-Z1T-000	SPRING, GOVERNOR	1		
4	16562-ZE1-020	SPRING, THROTTLE RETURN	1		
5	16570-ZB2-000	CONTROL ASSY.	1		
6	16584-883-300	SPRING, CONTROL ADJUSTING ...	1		
7	90013-883-000	BOLT, FLANGE, 6X12(CT200) ...	2		
8	90015-ZE5-010	BOLT, GOVERNOR ARM	1		
9	93500-05035-0A	SCREW, PAN, 5X35	1		
10	94050-06000	NUT, FLANGE, 6MM	1		

E-28

LABEL

C15



Z413E2800

Ref. No.	L.O.N.	(Relative ref. Number) Description	F.R.T.
----------	--------	---------------------------------------	--------

NO INFORMATION

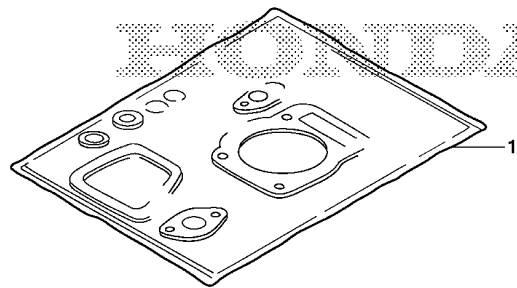
Ref. No.	Part No.	Description	Reqd. QTY	Serial No.	Parts catalogue code
			ER 2500 CX		
1	87114-ZH7-000	LABEL, WARNING (NOT CERTIFIED FOR SALE)	1	-----	----- L,S

2

EOP-1

GASKET KIT

C16



Z413X0100

Ref. No.	L.O.N.	(Relative ref. Number) Description	F.R.T.
----------	--------	---------------------------------------	--------

NO INFORMATION

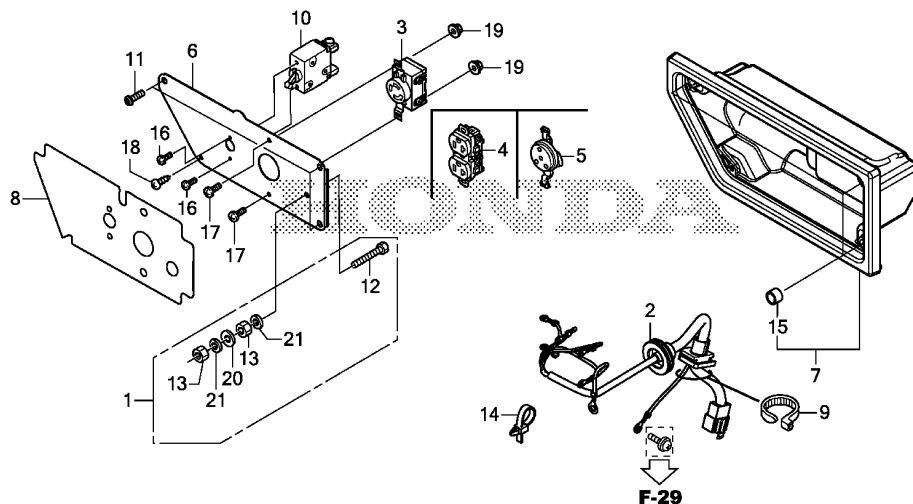
Ref. No.	Part No.	Description	Reqd. QTY ER 2500 CX	Serial No.	Parts catalogue code
1	06111-ZDK-000	GASKET KIT	(1)		

2

F-2

CONTROL PANEL

D 1



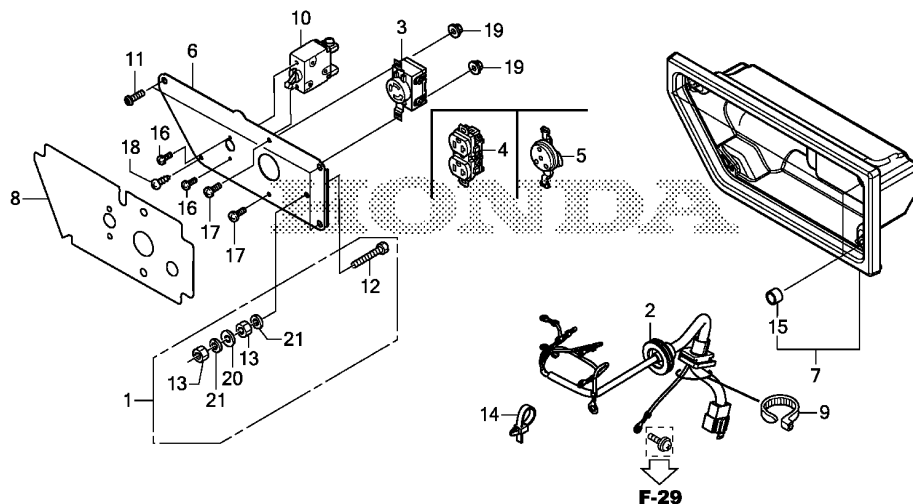
FR.

Z413F0200

Ref. No.	L.O.N.	(Relative ref. Number) Description	F.R.T.
2	6111B9	HARNESS, CONTROL WIRE	0.5
3		(4,5)	
	6221D5	RECEPTACLE/CONSENT, CONTROL PANEL	0.4
6	6221N9	PANEL, GENERATOR CONTROL	0.5
7	4131M5	CASE, CONTROL	0.2
8	6221C5	MARK, CONTROL PANEL	0.5
10	6131C4	BREAKER, CIRCUIT	0.3

Ref. No.	Part No.	Description	Reqd. QTY	Serial No.	Parts catalogue code
			ER 2500 CX		
1	31428-Z22-A60	TERMINAL SET, EARTH	1		
2	32150-Z41-L60	HARNESS ASSY., CONTROL WIRE ..	1	----- K,R,S	
	32150-Z41-L30	1	----- L	
	32150-Z41-L20	1	----- M	
3	32330-Z15-R60	RECEPTACLE(20A/250V)	1	----- K,R,S	
4	32330-Z21-A31	RECEPTACLE(20A/125V)	1	----- L	
5	32331-ZA8-720	SOCKET(16A/250V)	1	----- M	
6	32345-Z41-L60	PANEL, CONTROL	1	----- K,R,S	
	32345-Z41-L30	1	----- L	
	32345-Z41-L20	1	----- M	
7	32356-Z41-N60ZA	CASE, CONTROL PANEL			
	NH1BLACK	1		
8	32366-Z41-L80	MARK, PANEL(K)	1	----- K	
	32366-Z41-L30	MARK, PANEL(L)	1	----- L	
	32366-Z41-L20	MARK, PANEL(M)	1	----- M	
	32366-Z41-L60	MARK, PANEL(R)	1	----- R	
	32366-Z41-L70	MARK, PANEL(S)	1	----- S	
9	32903-Z22-000	TIE, CABLE(C)	1		
10	38220-Z41-L61	BREAKER, CIRCUIT(10A)	1	----- K,M,R	
	38220-Z41-L31	BREAKER, CIRCUIT(20A)	1	----- L	
	38220-Z41-L71	BREAKER, CIRCUIT(11A)	1	----- S	
11	90101-Z15-000	SCREW, TRUSS, 6X18	3		
12	90111-Z22-A60	BOLT, HEX., 6X22	1		
13	90112-Z22-000	NUT, HEX., 6MM	2		
14	90672-ZB4-000	TIE, CABLE	1		
15	91551-Z15-000	COLLAR, CONTROL CASE	3		

3



FR.

Z413F0200

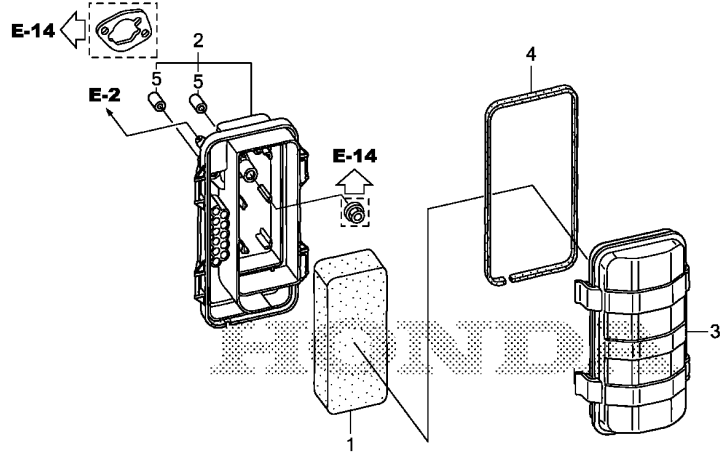
Ref. No.	Part No.	Description	Reqd. QTY		Serial No.	Parts catalogue code
			ER	2500 CX		

16	93500-03005-1A	SCREW, PAN, 3X5	2			
17	93500-04010-1A	SCREW, PAN, 4X10	2			
18	93911-24410	SCREW, TAPPING, 4X16	1			
19	94050-04000	NUT, FLANGE, 4MM	2			
20	94101-06000	WASHER, PLAIN, 6MM	1			
21	94111-06000	WASHER, SPRING, 6MM	2			

F-14

AIR CLEANER

D 3

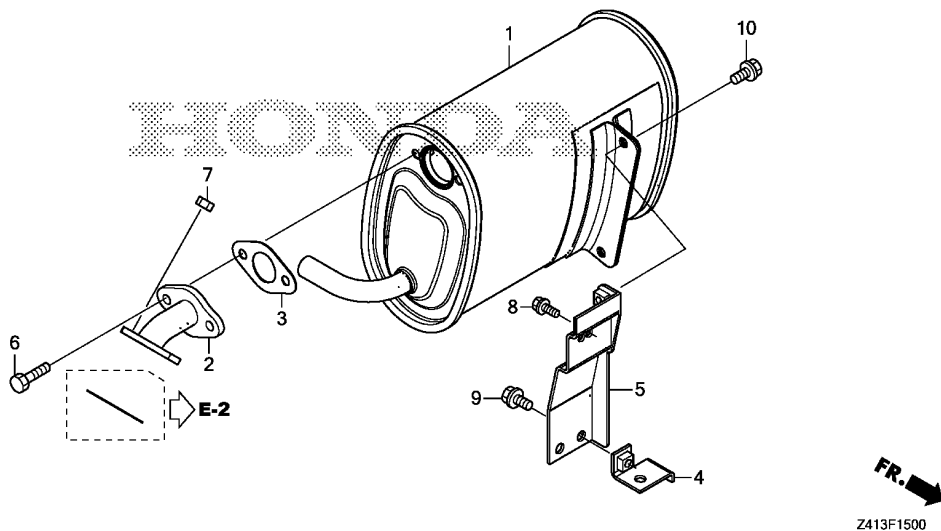


Z413F1400

Ref. No.	L.O.N.	(Relative ref. Number) Description	F.R.T.
1	3121B8	ELEMENT, AIR CLEANERINCLUDES: Air cleaner element -inspection	0.1
2	3121A5	CASE, AIR CLEANER	0.1
4	3121E9	SEAL, AIR CLEANER COVER	0.1

Ref. No.	Part No.	Description	Reqd. QTY	Serial No.	Parts catalogue code
			ER 2500 CX		
1	17211-Z15-R60	ELEMENT, AIR CLEANER	1		
2	17220-Z41-N60	CASE COMP., AIR CLEANER	1		
3	17231-Z41-N60	COVER, AIR CLEANER	1		
4	17233-Z15-R60	SEAL, AIR CLEANER COVER	1		
5	91552-Z15-R60	COLLAR, AIR CLEANER	2		

3



Ref. No.	L.O.N.	(Relative ref. Number) Description	F.R.T.
1	3131C5	MUFFLER, EXHAUST	0.2
2	3131C9	PIPE, EXHAUST	0.2
3	3131B5	GASKET, EXHAUST PIPE	0.2
5	3131E1	STAY, MUFFLER	0.2

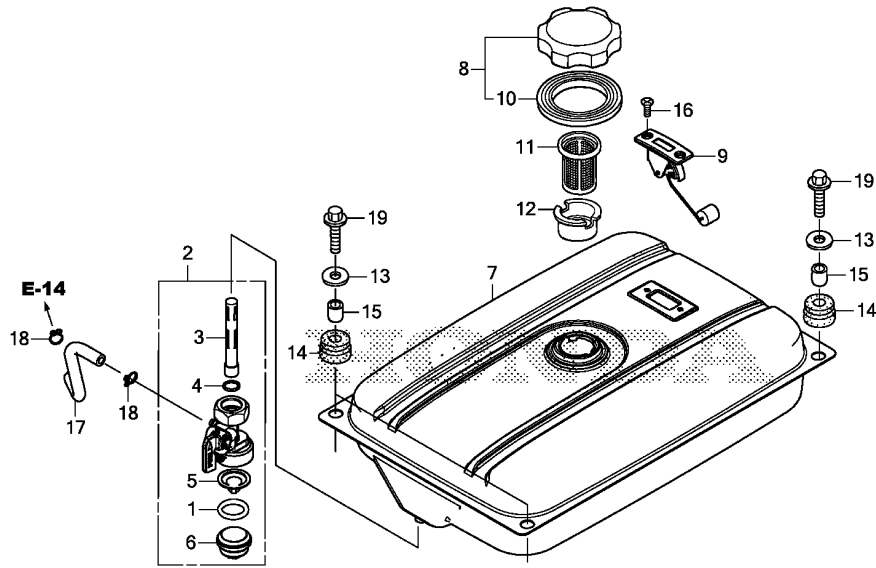
3

Ref. No.	Part No.	Description	Reqd. QTY		Serial No.	Parts catalogue code
			ER 2500	CX		
1	18310-Z41-N61	MUFFLER COMP.	1			
2	18330-ZR4-T60	PIPE COMP., EX.	1			
3	18333-ZB7-800	GASKET, EX. PIPE	1			
4	18337-ZR4-T60	STAY A, MUFFLER	1			
5	18338-ZR4-T60	STAY B, MUFFLER	1			
6	92101-08025-0A	BOLT, HEX., 8X25	2			
7	94001-08000-0S	NUT, HEX., 8MM	2			
8	95701-06012-00	BOLT, FLANGE, 6X12	1			
9	95701-08014-00	BOLT, FLANGE, 8X14	1			
10	95701-08016-00	BOLT, FLANGE, 8X16	2			

F-16

FUEL TANK

D 5

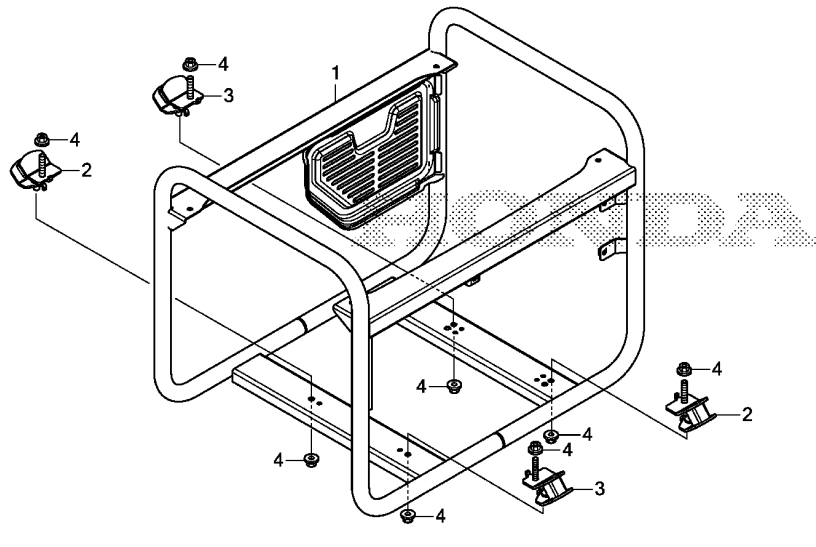


FR. →
Z413F1600

Ref. No.	L.O.N.	(Relative ref. Number) Description	F.R.T.
2	3101A3	COCK, FUEL	0.2
3		(4)	
3	3101D5	SCREEN, FUEL STRAINER	0.2
5		(1,6)	
5	3101A7	FILTER, FUEL TANK CUP	0.2
7	3101H7	TANK, FUEL	0.3
8		(10)	
8	3101M7	CAP, FUEL FILLER	0.1
9	6171A1	METER/GAUGE UNIT, FUEL	0.1
11		(12)	
11	3101A6	FILTER, FUEL	0.1
17	3101F1	TUBE, FUEL TANK	0.2

Ref. No.	Part No.	Description	Reqd. QTY	Serial No.	Parts catalogue code
			ER 2500 CX		
1	16173-Z41-N61	O-RING	1		
2	16950-Z41-N61	COCK ASSY., FUEL	1		
3	16952-Z41-N61	STRAINER, FUEL	1		
4	16957-Z41-N61	SEAL, COCK	1		
5	16959-Z41-N61	FILTER, CUP	1		
6	16967-Z41-N61	CUP, FUEL STRAINER	1		
7	17510-Z41-L60ZA	TANK COMP., FUEL	1		
		R280.....POWER RED	1		
8	17620-Z1T-800	CAP COMP., FUEL FILLER	1		
		(CHROME PLATED)(TOYOSHA)	1		
9	17630-ZR4-T71	METER ASSY., FUEL	1		
10	17631-Z1T-800	PACKING, FUEL FILLER CAP	1		
		(39X62X3)(TOYOSHA)	1		
11	17670-Z41-N60	FILTER COMP., FUEL	1		
12	17673-893-000	HOLDER, FUEL FILTER	1		
13	90501-Z15-000	WASHER, 6MM	4		
14	90851-898-000	RUBBER, TANK CUSHION	4		
15	91551-898-000	COLLAR, TANK CUSHION	4		
16	93600-05010-0A	SCREW, FLAT, 5X10	2		
17	95001-45120-40	TUBE, FUEL, 4.5X120	1		
		(95001-45001-60M)	1		
18	95002-02080	CLIP, TUBE(B8)	2		
19	95701-06022-07	BOLT, FLANGE, 6X22	4		

3

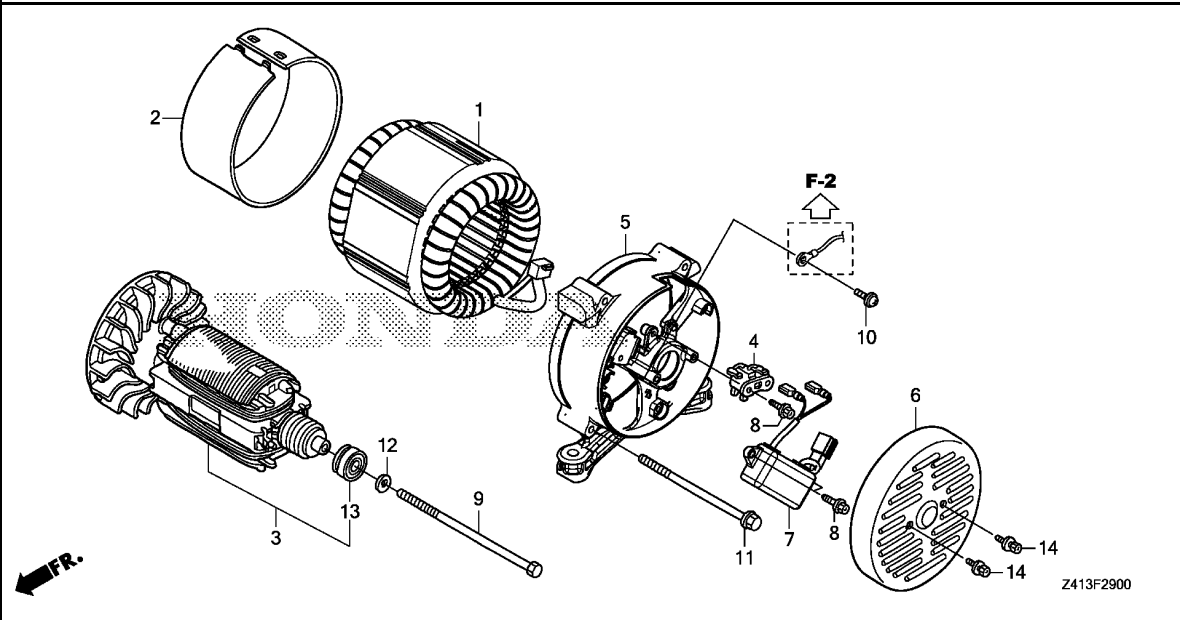


Ref. No.	L.O.N.	(Relative ref. Number) Description	F.R.T.
1	4101H6	FRAME, MAININCLUDES: Engine removal and installation	0.5
2	4101V0	RUBBER, BOTTOM :LEFT FRONTINCLUDES: Engine removal and installation	0.4
	4101V0A	.Replace bottom rubber all add	0.1
	4101V4	RUBBER, BOTTOM :RIGHT REARINCLUDES: Engine removal and installation	0.4
	4101V4A	.Replace bottom rubber all add	0.1
3	4101V1	RUBBER, BOTTOM :RIGHT FRONT .. .INCLUDES: Engine removal and installation	0.4
	4101V1A	.Replace bottom rubber all add	0.1
	4101V3	RUBBER, BOTTOM :LEFT REARINCLUDES: Engine removal and installation	0.4
	4101V3A	.Replace bottom rubber all add	0.1

FR. →
Z413F2500

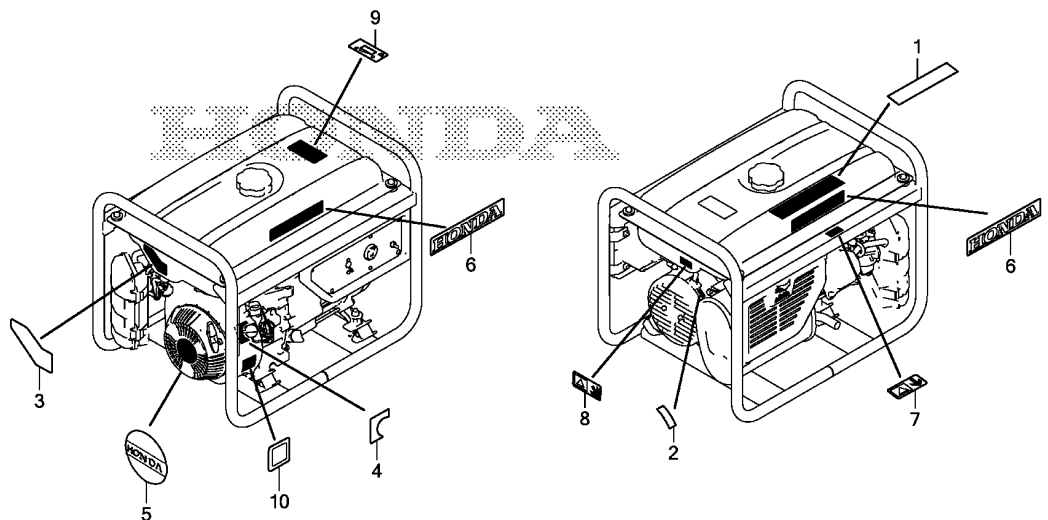
3

Ref. No.	Part No.	Description	Reqd. QTY	Serial No.	Parts catalogue code
			ER 2500 CX		
1	50310-Z41-N60ZA	FRAME COMP. *NH105*...MAT BLACK (#15-#20)	1		
2	68326-Z15-B70	RUBBER, FR. BOTTOM	2		
3	68327-Z15-B70	RUBBER, RR. BOTTOM	2		
4	94050-08000	NUT, FLANGE, 8MM	8		



Ref. No.	L.O.N.	(Relative ref. Number) Description	F.R.T.
1	6201B9	STATOR, GENERATOR	0.9
3	6201A9	ROTOR, GENERATOR	0.9
4	6171B8	BRUSH, GENERATOR	0.2
5	6201B6	HOUSING, GENERATOR :REAR	0.7
7	6201C0	REGULATOR, AUTOMATIC VOLTAGE	0.2
13	6201A7	BEARING, GENERATOR ROTOR	0.8

Ref. No.	Part No.	Description	Reqd. QTY		Serial No.	Parts catalogue code
			ER 2500 CX			
1	31120-Z41-N61	STATOR ASSY.	1		----- K	
	31120-Z41-L31	1		----- L	
	31120-Z41-L61	1		----- M,R	
	31120-Z41-L71	1		----- S	
2	31127-Z15-000ZC	COVER, STATOR *NH105*...MAT BLACK (#15-#20)	1			
3	31130-Z41-N61	ROTOR COMP.	1			
4	31155-ZR4-000	BRUSH ASSY.	1			
5	31171-Z41-N61	HOUSING, RR.	1			
6	31186-Z41-N60ZB	COVER, GENERATOR END *NH105*...MAT BLACK (#15-#20)	1			
7	31700-Z41-N62	REGULATOR ASSY., AUTOMATIC VOLTAGE	1		----- K	
	31700-Z41-L32	1		----- L	
	31700-Z41-L62	1		----- M,R	
	31700-Z41-L72	1		----- S	
8	90032-875-000	SCREW, TAPPING, 5X14	3			
9	90101-ZD8-K62	BOLT, HEX., 5/16X180	1			
10	90102-Z21-000	SCREW, PAN, 5X12	1			
11	90157-ZR5-000	BOLT, FLANGE, 6X125	4			
12	90410-SD3-660	WASHER, PLAIN, 8MM	1			
13	91051-Z41-N61	BEARING ASSY., 6202	1			
14	93401-05010-07	BOLT-WASHER, 5X10	2			



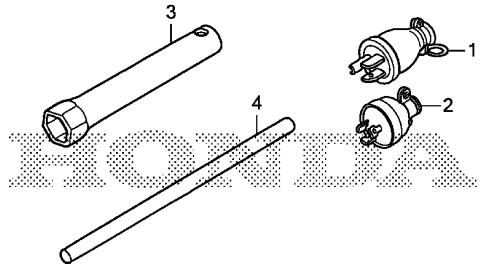
Z413F3100

Ref. L.O.N. (Relative ref. Number) F.R.T.
No. Description

NO INFORMATION

3

Ref. No.	Part No.	Description	Reqd. QTY		Serial No.	Parts catalogue code
			ER	2500 CX		
1	87150-Z36-D60	MARK A, CAUTION	1			
2	87178-Z30-D80	MARK, DIRECTION	1		----- K	
3	87403-Z41-N60	MARK, OPERATION	1			
4	87501-Z41-L60	MARK, ENGINE SWITCH	1			
5	87531-Z15-000	MARK, HONDA	1			
6	87531-Z41-N60	MARK, HONDA	2			
7	87539-Z41-L60	MARK, EX. CAUTION(ENGLISH) ..	1			
8	87540-Z41-L60	MARK, EX. CAUTION(ENGLISH) ..	1			
9	87565-Z22-620	MARK, FUEL INDICATION	1			
10	87594-Z41-N60	MARK, OIL CHECK	1			



Z413F3200

Ref. L.O.N. (Relative ref. Number) F.R.T.
No. Description

NO INFORMATION

Ref. No.	Part No.	Description	Reqd. QTY		Serial No.	Parts catalogue code
			ER	2500		
1	32310-836-000	PLUG ASSY., CONSENT(15A/125V)	2		----- L	
2	32310-Z15-R60	PLUG ASSY., CONSENT(20A-250V)	1		----- K,R,S	
3	89216-ZR6-T60	WRENCH, PLUG	1			
4	99005-01000	BAR A, HANDLE	1			



PART NO. INDEX

E 1

Part Number	Address	Page	Ref.	Part Number	Address	Page	Ref.	Part Number	Address	Page	Ref.	Part Number	Address	Page	Ref.				
06000				16000				19000				32345-Z41-L60 D1 33 6				90013-883-000 C1 17 7			
06111-ZDK-000	C16	32	1	16010-ZB1-015	C11	27	1	19511-Z1T-000	C12	28	1	32356-Z41-N60ZA	D1	33	7	C10 26 6			
11000				16011-ZE0-005	C11	27	2	19610-ZDK-000ZA	C10	26	1	32366-Z41-L20	D1	33	8	C14 30 7			
11300-ZDK-D10				16013-ZOS-B01	C11	27	3	19611-ZH8-810	C10	26	2	32366-Z41-L30	D1	33	8	90015-ZE5-010	C14 30 8		
12000				16015-ZE0-831	C11	27	4	19631-ZDK-000	C10	26	3	32366-Z41-L60	D1	33	8	90022-888-010	C10 26 7		
12000-ZDK-407	C2	18	1	16016-ZH7-W01	C11	27	5	28000				32366-Z41-L70	D1	33	8	90032-875-000	D7 39 8		
12209-ZH8-003	C6	22	1	16024-ZE1-811	C11	27	6	28400-ZDL-003	C9	25	1	32366-Z41-L80	D1	33	8	90043-ZDK-D10	C1 17 8		
12210-Z1T-405	C1	17	1	16028-ZE0-005	C11	27	7	28405-ZDL-003	C9	25	2	32903-Z22-000	D1	33	9	90047-ZDK-000	C1 17 9		
12251-ZL0-003	C1	17	2	16044-ZE0-005	C11	27	8	28414-ZDK-003	C9	25	3	34000				90101-Z15-000	D1 33 11		
12310-ZE1-020	C1	17	3	16100-Z1T-D41	C11	27	9	28417-ZDL-003	C9	25	4	34150-ZH7-023	C10	26	4	90101-ZD8-K62	D7 39 9		
12312-Z1T-701	C1	17	4	16124-ZE0-005	C11	27	10	28421-ZDK-003	C9	25	5	35000				90102-Z21-000	D7 39 10		
13000				16166-ZH8-E80	C11	27	11	28422-ZDK-003	C9	25	6	35480-Z0T-003	C2	18	7	90111-Z22-A60	D1 33 12		
13010-Z4K-004	C5	21	1	16173-Z41-N61	D5	37	1	28433-ZDK-003	C9	25	7	36000				90112-Z22-000	D1 33 13		
13010-Z4P-003	C5	21	1	16211-Z1T-000	C11	27	12	28441-ZDK-003	C9	25	8	36100-ZF6-P82	C10	26	5	90121-952-000	C13 29 4		
13011-Z4K-004	C5	21	1	16212-Z1T-701	C11	27	13	28442-ZDK-003	C9	25	9	38000				90131-ZE1-000	C2 18 8		
13011-Z4P-003	C5	21	1	16220-ZE1-020	C11	27	14	28443-ZDK-003	C9	25	10	50000				90157-ZR5-000	D7 39 11		
13012-Z4K-004	C5	21	1	16221-Z1T-701	C11	27	15	28451-ZDL-003	C12	28	2	38220-Z41-L31	D1	33	10	90201-Z1T-000	C12 28 4		
13012-Z4P-003	C5	21	1	16510-Z1T-000	C2	18	2	28461-ZDK-003	C9	25	11	38220-Z41-L61	D1	33	10	90206-ZE1-000	C6 22 16		
13013-Z4K-004	C5	21	1	16511-ZE1-000	C2	18	3	28462-ZDK-003	C9	25	12	38220-Z41-L71	D1	33	10	90410-SB3-660	D7 39 12		
13013-Z4P-003	C5	21	1	16513-ZE1-000	C2	18	4	30000				36100-ZF6-P82	C10	26	5	90451-Z1T-000	C2 18 9		
13101-Z1T-010	C5	21	2	16531-Z1T-000	C2	18	5	30500-ZDK-004	C13	29	1	38000				90501-Z15-000	D5 37 13		
13102-Z1T-000	C5	21	2	16541-Z1T-000	C2	18	6	30700-ZDK-004	C13	29	2	38220-Z41-L31	D1	33	10	90551-ZE1-000	C5 21 6		
13103-Z1T-000	C5	21	2	16551-ZE0-010	C14	30	1	31000				50310-Z41-N60ZA	D6	38	1	90601-Z1T-003	C10 26 8		
13104-Z1T-000	C5	21	2	16555-ZE1-000	C14	30	2	31110-Z1T-004	C12	28	3	50310-Z41-N60ZA	D6	38	1	90601-ZE1-000	C2 18 10		
13111-Z1T-000	C5	21	3	16561-Z1T-D00	C14	30	3	31120-Z41-L31	D7	39	1	68000				90602-ZE1-000	C2 18 11		
13200-Z1T-600	C5	21	4	16562-ZE1-020	C14	30	4	31120-Z41-L61	D7	39	1	68326-Z15-B70	D6	38	2	90672-ZB4-000	D1 33 14		
13310-Z1T-F00	C4	20	1	16570-ZB2-000	C14	30	5	31120-Z41-L71	D7	39	1	68327-Z15-B70	D6	38	3	90851-898-000	D5 37 14		
13331-357-000	C4	20	2	16584-883-300	C14	30	6	31120-Z41-N61	D7	39	1	50000				91001-Z1T-003	C2 18 12		
14000				16610-ZB2-000	C11	27	16	31127-Z15-000ZC	D7	39	2	87000				91001-ZF1-003	C2 18 12		
14100-Z1T-810	C6	22	2	16950-Z41-N61	D5	37	2	31130-Z41-N61	D7	39	3	87114-ZH7-000	C15	31	1	91001-ZF1-004	C2 18 12		
14410-ZE1-010	C6	22	3	16952-Z41-N61	D5	37	3	31155-ZR4-000	D7	39	4	87150-Z36-D60	D8	40	1	91051-Z41-N61	D7 39 13		
14431-ZE1-000	C6	22	4	16957-Z41-N61	D5	37	4	31171-Z41-N61	D7	39	5	87178-Z30-D80	D8	40	2	91202-Z1T-003	C2 18 13		
14441-ZE1-010	C6	22	5	16959-Z41-N61	D5	37	5	31186-Z41-N60ZB	D7	39	6	87403-Z41-N60	D8	40	3	C3 19 4			
14451-Z7E-000	C6	22	6	16967-Z41-N61	D5	37	6	31428-Z22-A60	D1	33	1	87501-Z41-L60	D8	40	4	91353-Z7E-003	C2 18 14		
14568-ZE1-000	C6	22	7	17000				31700-Z41-L32	D7	39	7	87531-Z15-000	D8	40	5	91551-898-000	D5 37 15		
14711-ZF1-000	C6	22	8	17211-Z15-R60	D3	35	1	31700-Z41-L62	D7	39	7	87531-Z41-N60	D8	40	6	91551-Z15-000	D1 33 15		
14721-ZF1-000	C6	22	9	17220-Z41-N60	D3	35	2	31700-Z41-L72	D7	39	7	87539-Z41-L60	D8	40	7	91552-Z15-R60	D3 35 5		
14751-ZF1-000	C6	22	10	17231-Z41-N60	D3	35	3	31700-Z41-L62	D7	39	7	87540-Z41-L60	D8	40	8	92000			
14771-ZE1-000	C6	22	11	17233-Z15-R60	D3	35	4	31700-Z41-L72	D7	39	7	87565-Z22-620	D8	40	9	92101-08025-0A	D4 36 6		
14773-ZE1-000	C6	22	12	17510-Z41-L60ZA	D5	37	7	31700-Z41-N62	D7	39	7	87594-Z41-N60	D8	40	10	93000			
14781-ZE1-000	C6	22	13	17620-Z1T-800	D5	37	8	32000				93401-05010-07	D7 39 14	94000					
14791-ZE1-010	C6	22	14	17630-ZR4-T71	D5	37	9	32150-Z41-L20	D1	33	2	93500-03005-1A	D2 34 16	94001-08000-0S		D4 36 7			
15000				17631-Z1T-800	D5	37	10	32150-Z41-L30	D1	33	2	93500-04010-1A	D2 34 17	94050-04000		D2 34 19			
15600-Z1T-000	C3	19	2	17670-Z41-N60	D5	37	11	32150-Z41-L60	D1	33	2	93500-05035-0A	C14 30 9	94050-06000		C14 30 10			
15625-Z1T-000	C3	19	3	17673-893-000	D5	37	12	32195-ZDK-004	C13	29	3	93600-05010-0A	D5 37 16	94001-08000-0S		D4 36 7			
15721-Z1T-D40	C1	17	5	18000				32310-836-000	D9	41	1	93911-24410	D2 34 18	94001-08000-0S		D4 36 7			
18000				18310-Z41-N61	D4	36	1	32310-Z15-R60	D9	41	2	90000				94050-04000	D2 34 19		
18310-Z41-N61	D4	36	1	18330-ZR4-T60	D4	36	2	32330-Z15-R60	D1	33	3	90001-Z1T-000				C5 21 5			
18330-ZR4-T60	D4	36	2	18333-ZB7-800	D4	36	3	32330-Z21-A31	D1	33	4	90003-ZDK-003				C9 25 13			
18333-ZB7-800	D4	36	3	18337-ZR4-T60	D4	36	4	32331-ZA8-720	D1	33	5	90012-ZE0-010				C6 22 15			
18337-ZR4-T60	D4	36	4	18338-ZR4-T60	D4	36	5	32345-Z41-L20	D1	33	6	94001-08000-0S				D4 36 7			
18338-ZR4-T60	D4	36	5	18381-Z1T-701	C1	17	6	32345-Z41-L30	D1	33	6	94050-04000				D2 34 19			
18381-Z1T-701	C1	17	6	19000				32345-Z41-L30	D1	33	6	94050-06000				C14 30 10			

PART NO. INDEX

E 2

Part Number	Address	Page	Ref.	Part Number	Address	Page	Ref.	Part Number	Address	Page	Ref.	Part Number	Address	Page	Ref.
94050-06080	C11	27	17												
94050-08000	D6	38	4												
94050-10000	C2	18	15												
94101-06000	D2	34	20												
94101-06800	C2	18	16												
94111-06000	D2	34	21												
94251-08000	C2	18	17												
94301-08140	C3	19	5												
94301-10160	C1	17	10												
94305-20122	C11	27	18												
95000															
95001-45120-40	D5	37	17												
95002-02080	D5	37	18												
95701-06008-00	C10	26	9												
95701-06012-00	C2	18	18												
	D4	36	8												
95701-06022-07	D5	37	19												
95701-06025-00	C9	25	14												
95701-08014-00	D4	36	9												
95701-08016-00	D4	36	10												
95701-08032-00	C3	19	6												
95701-08060-00	C1	17	11												
96000															
96100-62050-00	C3	19	7												
98000															
98079-55846	C1	17	12												
98079-55855	C1	17	12												
98079-56846	C1	17	12												
98079-56855	C1	17	12												
99000															
99005-01000	D9	41	4												
99101-ZH8-0680	C11	27	19												
99101-ZH8-0700	C11	27	19												
99101-ZH8-0720	C11	27	19												
99204-ZE0-0350	C11	27	20												

4

PART NAME INDEX

F 1

Part name	Address	Page	Ref.	Part name	Address	Page	Ref.	Part name	Address	Page	Ref.
[A]											
ALERT UNIT, OIL	C10	26	4	COIL ASSY., IGNITION	C13	29	1	JET, MAIN, #70	C11	27	19
ARM, GOVERNOR	C14	30	1	COLLAR, AIR CLEANER	D3	35	5	JET, MAIN, #72	C11	27	19
ARM, VALVE ROCKER	C6	22	4	COLLAR, CONTROL CASE	D1	33	15	[K]			
[B]											
BARREL ASSY., CYLINDER	C2	18	1	COLLAR, RECOIL STARTER	C9	25	4	KEY, SPECIAL WOODRUFF, 25X18..	C4	20	2
BAR A, HANDLE	D9	41	4	COLLAR, TANK CUSHION	D5	37	15	KNOB, RECOIL STARTER	C9	25	11
BEARING ASSY., 6202	D7	39	13	CONTROL ASSY.	C14	30	5	[L]			
BEARING, RADIAL BALL	C2	18	12	CORD, STOP SWITCH	C13	29	3	LABEL, WARNING	C15	31	1
BEARING, RADIAL BALL, 6205	C2	18	12	COVER ASSY., CRANKCASE	C3	19	1	LEVER COMP., CHOKE	C11	27	16
	C3	19	7	COVER COMP., FAN	C10	26	1	LIFTER, VALVE	C6	22	5
BOLT-WASHER, 5X10	D7	39	14	COVER COMP., HEAD	C1	17	3	[M]			
BOLT, CONNECTING ROD	C5	21	5	COVER, AIR CLEANER	D3	35	3	MARK A, CAUTION	D8	40	1
BOLT, DRAIN PLUG	C2	18	8	COVER, GENERATOR END	D7	39	6	MARK, DIRECTION	D8	40	2
BOLT, FLANGE, 6X12	C1	17	7	COVER, STATOR	D7	39	2	MARK, ENGINE SWITCH	D8	40	4
	C2	18	18	CRANKSHAFT COMP.	C4	20	1	MARK, EX. CAUTION	D8	40	7
	C10	26	6	CUP, FUEL STRAINER	D5	37	6				
	C14	30	7	[D]				MARK, FUEL INDICATION	D8	40	9
	D4	36	8	DOWEL PIN, 10X16	C1	17	10	MARK, HONDA	D8	40	5
BOLT, FLANGE, 6X125	D7	39	11	DOWEL PIN, 8X14	C3	19	5				
BOLT, FLANGE, 6X20	C10	26	7	[E]				MARK, OIL CHECK	D8	40	10
BOLT, FLANGE, 6X22	D5	37	19	ELEMENT, AIR CLEANER	D3	35	1	MARK, OPERATION	D8	40	3
BOLT, FLANGE, 6X25	C9	25	14	[F]				MARK, PANEL	D1	33	8
	C13	29	4	FAN, COOLING	C12	28	1	METER ASSY., FUEL	D5	37	9
BOLT, FLANGE, 6X8	C10	26	9	FILTER COMP., FUEL	D5	37	11	MUFFLER COMP.	D4	36	1
BOLT, FLANGE, 8X14	D4	36	9	FILTER, CUP	D5	37	5	[N]			
BOLT, FLANGE, 8X16	D4	36	10	FLOAT SET	C11	27	3	NOZZLE, MAIN	C11	27	11
BOLT, FLANGE, 8X32	C3	19	6	FLYWHEEL COMP.	C12	28	3	NUT, FLANGE, 10MM	C2	18	15
BOLT, FLANGE, 8X60	C1	17	11	FRAME COMP.	D6	38	1	NUT, FLANGE, 4MM	D2	34	19
BOLT, GOVERNOR ARM	C14	30	8	[G]				NUT, FLANGE, 6MM	C11	27	17
BOLT, HEX., 5/16X180	D7	39	9	GASKET KIT	C16	32	1	NUT, FLANGE, 8MM	D6	38	4
BOLT, HEX., 6X22	D1	33	12	GASKET SET	C11	27	1	NUT, HEX., 6MM	D1	33	13
BOLT, HEX., 8X25	D4	36	6	GASKET, CYLINDER HEAD	C1	17	2	NUT, HEX., 8MM	D4	36	7
BOLT, PIVOT, 8MM	C6	22	15	GASKET, EX. PIPE	D4	36	3	NUT, PIVOT ADJUSTING	C6	22	16
BOLT, STUD, 6X103.5	C1	17	8	GASKET, MUFFLER	C1	17	6	NUT, SPECIAL, 14MM	C12	28	4
BOLT, STUD, 8X32	C1	17	9	GOVERNOR ASSY.	C2	18	2	[O]			
BREAKER, CIRCUIT	D1	33	10	GUIDE, RATCHET	C9	25	7	OIL SEAL, 25X41X6	C2	18	13
BRUSH ASSY.	D7	39	4	[H]							
[C]											
CAMSHAFT ASSY.	C6	22	2	HARNES ASSY., CONTROL WIRE ...	D1	33	2	O-RING	D5	37	1
CAP ASSY., NOISE SUPPRESSOR ..	C13	29	2	HEAD COMP., CYLINDER	C1	17	1	O-RING, 14MM	C2	18	14
CAP ASSY., OIL FILLER	C3	19	2	HOLDER, FUEL FILTER	D5	37	12	[P]			
CAP COMP., FUEL FILLER	D5	37	8	HOUSING, RR.	D7	39	5	PACKING, CARBURETOR	C11	27	15
CARBURETOR ASSY.	C11	27	9	[I]				PACKING, FUEL FILLER CAP	D5	37	10
CASE COMP., AIR CLEANER	D3	35	2	INSULATOR, CARBURETOR	C11	27	12	PACKING, HEAD COVER	C1	17	4
CASE, CONTROL PANEL	D1	33	7	[J]				PACKING, INSULATOR	C11	27	13
CASE, RECOIL STARTER	C9	25	3	JET SET, PILOT, #35	C11	27	20	PACKING, OIL FILLER CAP	C3	19	3
CHAMBER SET, FLOAT	C11	27	4	JET, MAIN, #68	C11	27	19	PANEL, CONTROL	D1	33	6
CHOKE SET	C11	27	8	[K]				PIN, GOVERNOR WEIGHT	C2	18	4
CLIP, GOVERNOR HOLDER	C2	18	11								
CLIP, HARNES	C10	26	8								
CLIP, PISTON PIN, 18MM	C5	21	6								
CLIP, TUBE	D5	37	18								
COCK ASSY., FUEL	D5	37	2								

PART NAME INDEX

F 2

Part name	Address	Page	Ref.	Part name	Address	Page	Ref.	Part name	Address	Page	Ref.
PIN, LOCK, 8MM	C2	18	17	SPRING, CONTROL ADJUSTING	C14	30	6				
PIN, PISTON	C5	21	3	SPRING, FRICTION	C9	25	8				
PIN, SPRING, 2X12	C11	27	18	SPRING, GOVERNOR	C14	30	3				
PIPE COMP., EX.	D4	36	2	SPRING, RECOIL STARTER	C9	25	9				
PISTON	C5	21	2	SPRING, RETURN	C9	25	10				
PIVOT, ROCKER ARM	C6	22	6	SPRING, THROTTLE RETURN	C14	30	4				
PLATE COMP., SIDE	C10	26	2	SPRING, VALVE	C6	22	10				
PLATE, PUSH ROD GUIDE	C6	22	14	SPRING, WEIGHT RETURN	C6	22	7				
PLUG ASSY., CONSENT	D9	41	1	STARTER ASSY., RECOIL	C9	25	1				
				STATOR ASSY.	D7	39	1				
PLUG, SPARK	C1	17	12	STAY A, MUFFLER	D4	36	4				
PULLEY, STARTER	C12	28	2	STAY B, MUFFLER	D4	36	5				
				STRAINER, FUEL	D5	37	3				
[R]				SWITCH ASSY., ENGINE STOP	C10	26	5				
RATCHET, STARTER	C9	25	6	SWITCH ASSY., OIL LEVEL	C2	18	7				
RECEPTACLE	D1	33	3	[T]							
				TANK COMP., FUEL	D5	37	7				
REEL, RECOIL STARTER	C9	25	5	TERMINAL SET, EARTH	D1	33	1				
REGULATOR ASSY., AUTOMATIC				TIE, CABLE	D1	33	9				
VOLTAGE	D7	39	7								
RETAINER, EX. VALVE SPRING ...	C6	22	12	TUBE, BREATHER	C1	17	5				
RETAINER, IN. VALVE SPRING ...	C6	22	11	TUBE, FUEL, 4.5X120	D5	37	17				
RING SET, PISTON	C5	21	1	[V]							
ROD ASSY., CONNECTING	C5	21	4	VALVE SET, FLOAT	C11	27	2				
ROD, GOVERNOR	C14	30	2	VALVE, EX.	C6	22	9				
ROD, PUSH	C6	22	3	VALVE, IN.	C6	22	8				
ROPE, RECOIL STARTER	C9	25	12	[W]							
ROTATOR, VALVE	C6	22	13	WASHER, 6MM	D5	37	13				
ROTOR COMP.	D7	39	3	WASHER, DRAIN PLUG, 10.2MM ...	C2	18	10				
RUBBER, FR. BOTTOM	D6	38	2	WASHER, PLAIN, 6MM	C2	18	16				
RUBBER, RR. BOTTOM	D6	38	3		D2	34	20				
RUBBER, TANK CUSHION	D5	37	14	WASHER, PLAIN, 8MM	D7	39	12				
[S]				WASHER, SPRING, 6MM	D2	34	21				
SCREW SET	C11	27	7	WASHER, THRUST, 6MM	C2	18	9				
SCREW SET, DRAIN	C11	27	6	WEIGHT, GOVERNOR	C2	18	3				
SCREW SET, PILOT	C11	27	5	WRENCH, PLUG	D9	41	3				
SCREW, FLAT, 5X10	D5	37	16								
SCREW, PAN, 3X5	D2	34	16								
SCREW, PAN, 4X10	D2	34	17								
SCREW, PAN, 5X12	D7	39	10								
SCREW, PAN, 5X35	C14	30	9								
SCREW, SETTING	C9	25	13								
SCREW, TAPPING, 4X16	D2	34	18								
SCREW, TAPPING, 5X14	D7	39	8								
SCREW, THROTTLE STOP	C11	27	10								
SCREW, TRUSS, 6X18	D1	33	11								
SEAL, AIR CLEANER COVER	D3	35	4								
SEAL, COCK	D5	37	4								
SEAL, VALVE STEM	C6	22	1								
SHAFT, GOVERNOR ARM	C2	18	6								
SHROUD	C10	26	3								
SLIDER, GOVERNOR	C2	18	5								
SOCKET	D1	33	5								
SPACER COMP., CARBURETOR	C11	27	14								
SPACER, RECOIL STARTER											
MOUNTING	C9	25	2								

1

FOREWORD INDEX

2

ENGINE GROUP

3

FRAME GROUP

4

PART NUMBER INDEX

5

PART NAME INDEX

HONDA
The Power of Dreams

October 16, 2014



PARTS CATALOGUE NEWS

Service Technology Department, Power Products Operations
Service Division, Honda Motor Co., Ltd.

Printed in Japan

CODE NO.	13Z41F01
PARTS CATALOGUE NEWS	ER2500CX
NEWS NO.	001

ER2500CX-RE type sales information

NOTE: This Parts Catalogue News explains only the parts of the different model that are produced to conform to addition of the ER2500CX-RE type.

As for the parts not listed on this Parts Catalogue News, use the parts of the ER2500CX-R type.

•Models, parts catalogue codes and applicable serial numbers

Model	Type		Parts catalogue type	Engine		Applicable engine serial No.	Applicable frame serial No.	Applicable carburetor identification No.
				Model	Type			
ER2500CX	R	Base type	R	GP160H	EY2	GCASH-1000001~	ECCC-1000001~	BE67N A
	RE	Additional type	RE					BEA1K A

•Features of each type

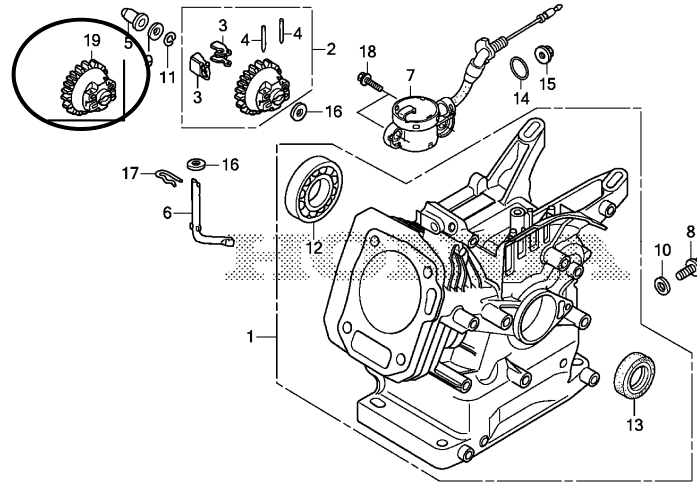
		Base type	Additional type
Specifications	Model	ER2500CX	
	Type	R	RE
Frequency	50Hz	●	●
	60Hz		
Voltage	120V		
	220V	●	●
	230V		
Consent	16A/250V		
	20A/125V		
	20A/250V	●	●

BOOKNo. : 13Z41F01

Block No.	Ref. No.	Part No.	Description	Reqd. QTY ER 2500 CX	Base Part No.	Parts catalogue code
-----------	----------	----------	-------------	-------------------------------	---------------	----------------------

E-3 CYLINDER BARREL

Ref. No.	(Relative ref. Number) LON Description	FRT
2	(3, 4, 19) GOVERNOR ASSEMBLY	2.1
1161C4	. INCLUDES: Engine removal and installation	



Z413E0300A

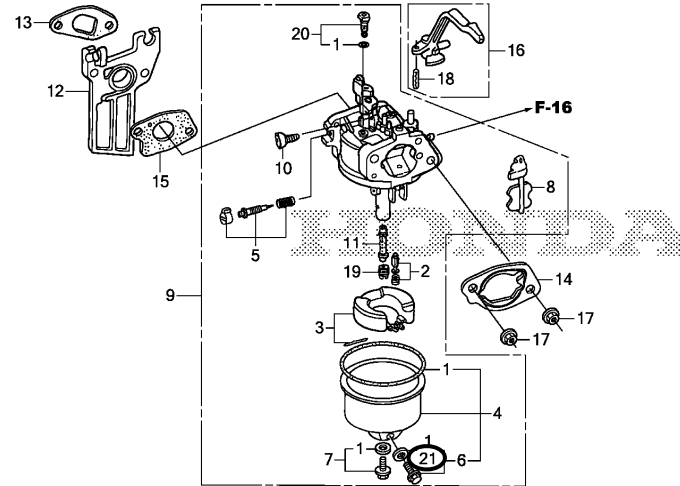
E-3	2	GOVERNOR ASSY.....	0	16510-Z1T-000	RE
	3	WEIGHT, GOVERNOR.....	0	16511-ZE1-000	RE
	4	PIN, GOVERNOR WEIGHT.....	0	16513-ZE1-000	RE
	19	16510-ZDL-000 GOVERNOR ASSY.....	1		RE

PARTS CATALOGUE NEWS

BOOKNo. : 13Z41F01

Block No.	Ref. No.	Part No.	Description	Reqd. QTY ER 2500 CX	Base Part No.	Parts catalogue code
-----------	----------	----------	-------------	-------------------------------	---------------	----------------------

E-14 CARBURETOR



Z413E1400A

E-14	9	16100-ZDK-D11	CARBURETOR ASSY. (BEA1K A).....	1	16100-Z1T-D41	RE
	21	16141-ZOS-003	WASHER, PLAIN(6. 2X10. 7 DRAIN).	1		RE
F-2	8	32366-Z41-P60	MARK, PANEL (RE).....	1	32366-Z41-L60	RE



PARTS CATALOGUE NEWS

Service Technology Department, Power Products Operations
 Service Division, Honda Motor Co., Ltd.

PARTS CATALOGUE - CORRECTED

Printed in Japan

CODE NO.	13Z41F01
PARTS CATALOGUE NEWS	ER2500CX
NEWS NO.	002

Block No.	Ref. No.	Note	Part No.	Description	Reqd. QTY	Serial No.	Parts catalogue code
E-22	3	D	16561-ZDK-D10	SPRING, GOVERNOR.	ER 2500 CX 1		
		E	16561-Z1T-D00	*PART NO. DELETION			

NOTE A:PART NO. CHANGE D:NEWLY PROVIDED E:PART NO. DELETION K:REQUIRED NO. CORRECTION L:APPLICATION SERIAL NO. CORRECTION
 M:PART DESCRIPTION CORRECTION T:APPLICATION CORRECTION Z:REMARKS CHANGE

April 13, 2015



PARTS CATALOGUE NEWS

Service Technology Department, Power Products Operations
Service Division, Honda Motor Co., Ltd.

PARTS CATALOGUE - CORRECTED

Printed in Japan

CODE NO.	13Z41F01
PARTS CATALOGUE NEWS	ER2500CX
NEWS NO.	003

Block No.	Ref. No.	Note	Part No.	Description	Reqd. QTY ER 2500 CX	Serial No.	Parts catalogue code
E-12	2	D	19611-ZDK-810	PLATE COMP. , SIDE(OIL ALERT)..	1		
		E	19611-ZH8-810	*PART NO. DELETION			

NOTE A:PART NO. CHANGE D:NEWLY PROVIDED E:PART NO. DELETION K:REQUIRED NO. CORRECTION L:APPLICATION SERIAL NO. CORRECTION
M:PART DESCRIPTION CORRECTION T:APPLICATION CORRECTION Z:REMARKS CHANGE

September 07, 2015



PARTS CATALOGUE NEWS

Service Technology Department, Power Products Operations
Service Division, Honda Motor Co., Ltd.

Printed in Japan

CODE NO.	13Z41F01
PARTS CATALOGUE NEWS	ER2500CX
NEWS NO.	004

ER2500CX-SK type sales information

NOTE: This Parts Catalogue News explains only the parts of the different model that are produced to conform to addition of the ER2500CX-SK type.

As for the parts not listed on this Parts Catalogue News, use the parts of the ER2500CX-S type.

•Models, parts catalogue codes and applicable serial numbers

Model	Type		Parts catalogue type	Engine		Applicable engine serial No.	Applicable frame serial No.	Applicable carburetor identification No.
				Model	Type			
ER2500CX	S	Base type	S	GP160H	EY3	GCASH-1000001~	ECCC-1000001~	BE67N A
	SK	Additional type	SK					BEA1K A

•Features of each type

		Base type	Additional type
Specifications	Model	ER2500CX	
	Type	S	SK
Frequency	50Hz		
	60Hz	●	●
Voltage	120V		
	220V	●	●
	230V		
Consent	16A/250V		●
	20A/125V		
	20A/250V	●	

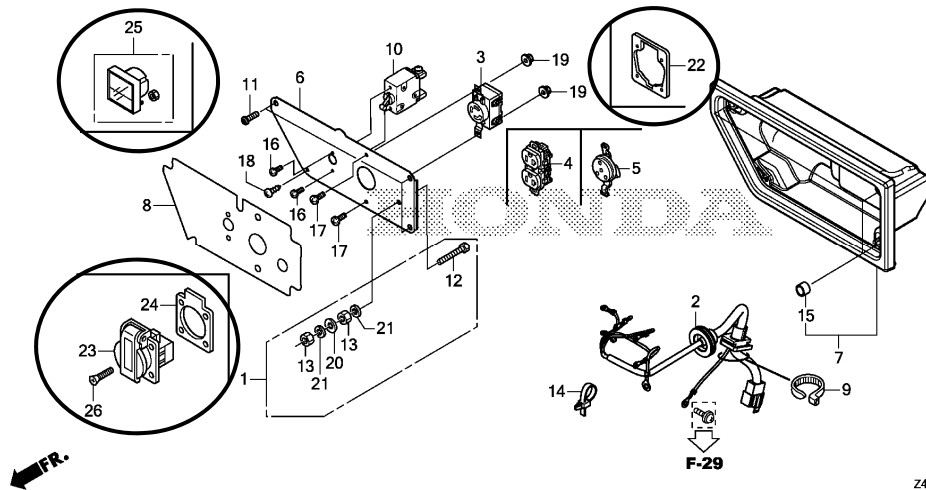
PARTS CATALOGUE NEWS

BOOKNo. : 13Z41F01

Block No.	Ref. No.	Part No.	Description	Reqd. QTY	Base Part No.	Parts catalogue code
				ER 2500 CX		
E-3	2		GOVERNOR ASSY.....	0	16510-Z1T-000	SK
	3		WEIGHT, GOVERNOR.....	0	16511-ZE1-000	SK
	4		PIN, GOVERNOR WEIGHT.....	0	16513-ZE1-000	SK
	19	16510-ZDL-000	GOVERNOR ASSY.....	1		SK
E-14	9	16100-ZDK-D11	CARBURETOR ASSY. (BEA1K A).....	1	16100-Z1T-D41	SK
	21	16141-ZOS-003	WASHER, PLAIN(6.2X10.7 DRAIN).	1		SK

F-2 CONTROL PANEL

Ref. No.	(Relative ref. Number)	Description	FRT
3	(4, 5, 23)		
6221D5		RECEPTACLE/CONSENT, CONTROL PANEL	0.4
25 8121B4		METER, VOLT	0.3



Z413F0200A

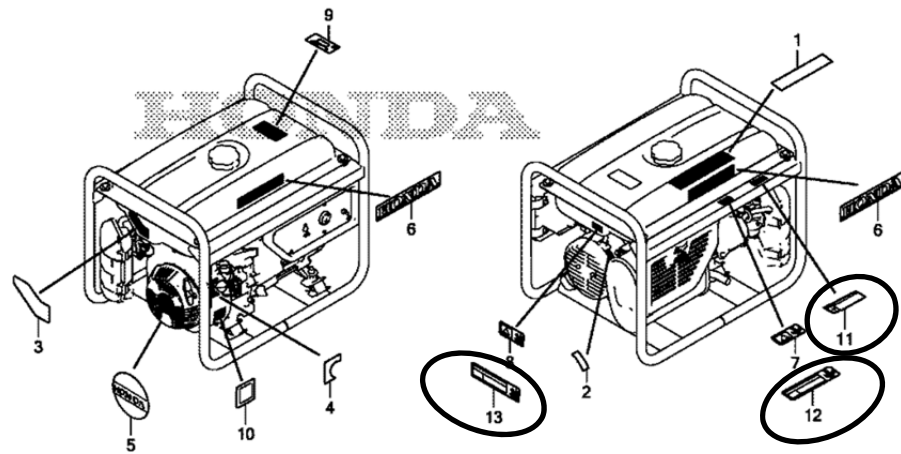
F-2	2	32150-Z41-A70	HARNESS ASSY., CONTROL WIRE...	1	32150-Z41-L60	SK
	3		RECEPTACLE (20A/250V).....	0	32330-Z15-R60	SK
	6	32345-Z41-A70	PANEL, CONTROL.....	1	32345-Z41-L60	SK
	8	32366-Z41-A70	MARK, PANEL (SK).....	1	32366-Z41-L70	SK
	17		SCREW, PAN, 4X10.....	0	93500-04010-1A	SK
	19		NUT, FLANGE, 4MM.....	0	94050-04000	SK

PARTS CATALOGUE NEWS

BOOKNo. : 13Z41F01

Block No.	Ref. No.	Part No.	Description	Reqd. QTY	Base Part No.	Parts catalogue code
				ER 2500 CX		
	22	31426-Z18-000	PLATE SET, CONSENT.....	1	SK	
	23	32331-ZT3-C60	RECEPTACLE(16A/250V).....	1	SK	
	24	32335-875-610	PACKING, RECEPTACLE.....	1	SK	
	25	37450-Z18-V51	METER ASSY., VOLT.....	1	SK	
	26	93600-04012-1G	SCREW, FLAT, 4X12.....	4	SK	
F-16	9	17630-ZR4-T72	METER ASSY., FUEL.....	1	17630-ZR4-T71	SK

F-31 LABEL



Z413F3100A

F-31	1	87150-Z36-S20	MARK, CAUTION.....	1	87150-Z36-D60	SK
	4	87501-Z41-A70	MARK, ENGINE SWITCH.....	1	87501-Z41-L60	SK
	7		MARK, EX. CAUTION(ENGLISH)....	0	87539-Z41-L60	SK
	8		MARK, EX. CAUTION(ENGLISH)....	0	87540-Z41-L60	SK
	11	87511-ZT3-S20	MARK, CAUTION VOLTAGE.....	1		SK
	12	87539-Z41-A70	MARK, EX. CAUTION.....	1		SK

PARTS CATALOGUE NEWS

BOOKNo. : 13Z41F01

Block No.	Ref. No.	Part No.	Description	Reqd. QTY	Base Part No.	Parts catalogue code
	13	87540-Z41-A70	MARK, EX. CAUTION.....	1		SK



PARTS CATALOGUE NEWS

Service Technology Department, Power Products Operations
Service Division, Honda Motor Co., Ltd.

PARTS CATALOGUE - CORRECTED

Printed in Japan

CODE NO.	13Z41F01
PARTS CATALOGUE NEWS	ER2500CX
NEWS NO.	005

Block No.	Ref. No.	Note	Part No.	Description	Reqd. QTY	Serial No.		Parts catalogue code
					ER 2500 CX			
E-3	2	L	16510-Z1T-000	GOVERNOR ASSY.	1	-----	1177964	K, L, M, R, S
	3	L	16511-ZE1-000	WEIGHT, GOVERNOR.	2	-----	1177964	K, L, M, R, S
	4	L	16513-ZE1-000	PIN, GOVERNOR WEIGHT.	2	-----	1177964	K, L, M, R, S
	19	T	16510-ZDL-000	GOVERNOR ASSY.	1	-----	-----	RE, SK
						1	1177965	-----
E-14	9	L	16100-Z1T-D41	CARBURETOR ASSY. (BE67N A)	1	-----	1177964	K, L, M, R, S
		T	16100-ZDK-D11	CARBURETOR ASSY. (BEA1K A)	1	-----	-----	RE, SK
					1	1177965	-----	K, L, M, R, S
	21	T	16141-ZOS-003	WASHER, PLAIN (6. 2X10. 7 DRAIN) .	1	-----	-----	RE, SK
				(CARBURETOR NO.)	1	BEA1K A	-----	K, L, M, R, S

NOTE A:PART NO. CHANGE D:NEWLY PROVIDED E:PART NO. DELETION K:REQUIRED NO. CORRECTION L:APPLICATION SERIAL NO. CORRECTION
M:PART DESCRIPTION CORRECTION T:APPLICATION CORRECTION Z:REMARKS CHANGE