

GENERATOR

ER2500CX

PARTS CATALOGUE

1

FOREWORD INDEX

1

ENGINE GROUP

2

FRAME GROUP

3

PART NUMBER INDEX

4

PART NAME INDEX

5

Instruction for use of parts catalogue

- **This parts catalogue was prepared based on the latest information available as of June 01, 2014.**
- See the parts catalogue news for any revision that is made after June 01, 2014.
- **Always specify the part number when ordering a part.**
 - Check the model, type, serial numbers, color, maker, and the size as needed before ordering a part.
 - Note that the illustrations (part drawings) can differ from the actual parts in shape. They are given just to help you to refer to the parts.
- **When modifications or additions to this parts catalogue are made, a revised edition will be issued at an appropriate time, with successively progressing revision numbers on the cover. We recommend obtaining such revisions in order to keep your parts catalogue up-to-date at all times. To check whether a parts catalogue revision has been issued, please contact your Honda distributor.**

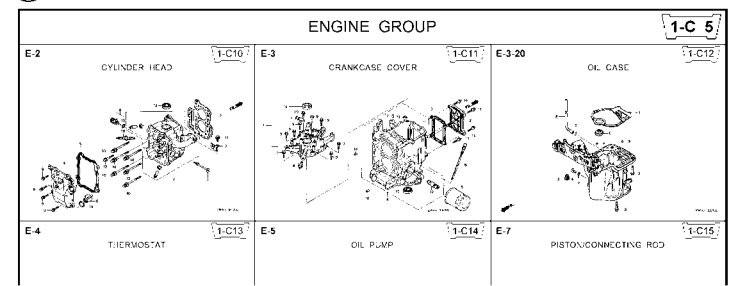
Initial version issue date June 01, 2014
Honda Motor Co., Ltd.

CONTENTS

	Page	Address No.	
● Instruction for use of parts catalogue	1	B 1	1
● How to refer to the part information	2	B 2	
● Part catalogue structure	3	B 3	
● When the parts were revised	4	B 4	
● Abbreviations used in the parts catalogue	4	B 4	
● How to check the part block and serial numbers	5	B 5	
● Models, parts catalogue codes and applicable serial numbers	6	B 6	
● Fuel hose, general purpose hoses and vinyl hose	7	B 7	
● FLAT RATE SERVICE TIME	8	B 8	
● Illustrated index	13	B13	
● ENGINE GROUP	16	C 1	2
● FRAME GROUP	31	D 1	3
● PART NO. INDEX	38	E 1	4
● PART NAME INDEX	40	F 1	5

How to refer to the part information

A Reference with "Illustrated index"



B Reference with "Part number index"

PART NO. INDEX

Part Number	Address	Page	Ref.	Part Number	Address	Page
06000				15212-ZW9-000	1-C14	3C
06316-ZW9-000	1-G9	88	1	15220-ZW9-003	1-C14	3C
11000				15332-ZW9-000	1-E8	55
11300-ZW9-405	1-C11	27	1	15332-ZW9-A30	1-E11	5E
11300-ZW9-406	1-C11	27	1	15400-PFB-004	1-C11	27
11340-ZW9-000	1-C11	27	2	15422-ZW9-000	1-C14	3C
11342-ZW9-000	1-C11	27	3	15473-881-000	1-C14	3C
11381-ZW9-003	1-C12	28	1	15474-ZW9-000	1-C14	3C
				15611-921-000	1-C10	2E
				15655-ZW9-000	1-C11	27
				16000		
12000				16010-ZV4-005	1-D4	3E
12000-ZW9-405ZA	1-C11	27	4	16011-ZV4-005	1-D4	3E
12155-ZV4-A00	1-C13	29	1	16013-ZW9-003	1-D4	3E
12166-ZW9-000	1-C10	26	1	16016-ZW9-003	1-D4	3E
12209-GB4-681	1-C16	32	1	16016-ZW9-721	1-D4	3E
12210-ZW9-405ZA	1-C10	26	2	16023-ZW9-003	1-D4	3E
12216-ZE2-300	1-E8	55	1	16024-ZV4-650	1-D4	3E
	1-E11	58	1	16028-ZV4-650	1-D4	3E

C Reference with "Part name index"

PART NAME INDEX

Part name	Address	Page	Ref.
[A]			
ABSORBER , FUEL	1-E15	62	5
ARMATURE COMP.	1-D11	43	7
ARM COMP. , LINK JOINT	1-G6	85	18
ARM COMP. , SHIFT LINK	1-G6	85	14
ARM COMP. , TILT	1-F15	79	20
ARM , FUEL PUMP ROCKER	1-C16	32	4
ARM , REVERSE LOCK	1-F15	79	18
ARM , SHIFT LINK	1-F11	74	7
ARM , STOPPER	1-D1	33	12
ARM , THROTTLE REMOTE	1-F11	74	6
ARM , VALVE ROCKER	1-C16	32	3
[B]			
BAG , TOOL , 160MM	1-G5	84	10
BAND	1-G6	86	37
BAND B1 , WIRE	1-F6	69	1
BAND , CORD	1-F3	67	18
BAND , TUBE CLIP , 11MM	1-E15	63	20
BAND , TUBE CLIP , 12.5MM	1-E15	63	19

Address No. 1-C10

Block No. E-2

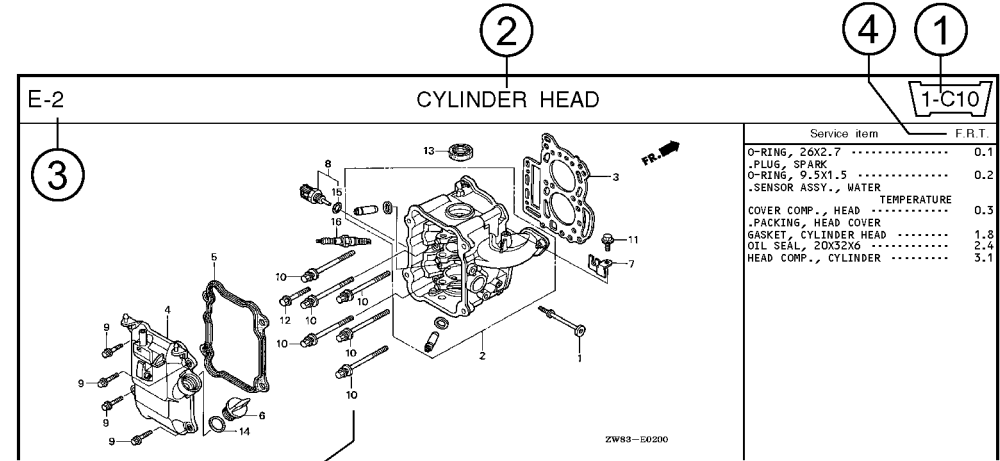
CYLINDER HEAD

Ref No.

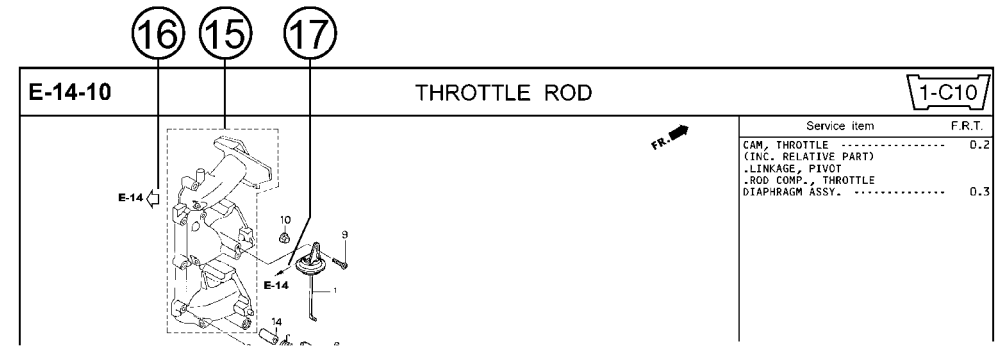
Ref. No.	Part No.	Description	Reqd. QTY						Serial No.	Parts catalogue code
			99D1	99D1	1001	1001	1001	1001		
1	12166-ZW9-000	STOPPER, ENGINE SIDE	2	2	2	2	2	2		
2	12210-ZW9-000ZA	HEAD COMP., CYLINDER	1	1	1	1	1	1		
3	12251-ZW9-003	GASKET, CYLINDER HEAD	1	1	1	1	1	1		
4	12310-ZW9-000	COVER COMP., HEAD	1	1	1	1	1	1		
5	12312-ZW9-000	PACKING, HEAD COVER	1	1	1	1	1	1		
6	15611-921-000	CAP, OIL (NO GAUGE)	1	1	1	1	1	1		
7	16617-ZW9-000	HOLDER, CABLE	1	1	1	1	1	1	SC,SG	
	16617-ZW9-010		1	1	1	1	1	1	1001800 LHC,LHD	
			1	1	1	1	1	1	1001801 LHC,LHD	
8	35673-ZV5-003	SENSOR ASSY., WATER	1	1	1	1	1	1		
9	90003-ZW9-000	BOLT, FLANGE, 6X22	4	4	4	4	4	4		
10	90007-ZW9-003	BOLT, FLANGE, 8X83	6	6	6	6	6	6		
11	90011-ZW9-000	BOLT, FLANGE, 6X14(CT200)	1	1	1	1	1	1		
12	90020-ZW9-000	BOLT, FLANGE, 8X40	2	2	2	2	2	2		
13	91202-KJ9-003	OIL SEAL, 20X32X6	1	1	1	1	1	1		
14	91301-805-000	O-RING, 26X2.7	1	1	1	1	1	1		
15	91307-PK2-005	O-RING, 9.5X1.5(HONDA KIKAKI)	1	1	1	1	1	1		
16	98059-55916	PLUG, SPARK (CR5EH-9)	2	2	2	2	2	2		
	98059-55926	PLUG, SPARK (U16FER9)	2	2	2	2	2	2		

Page No. 2000.09.20 E

Part catalogue structure



Ref. No.	Part No.	Description	Reqd. QTY						Serial No.	Parts catalogue code
			BF 9/9D1	BFP 9/9D1	BF 10D1	BFP 10D1	BF 10B1	BFP 10B1		
1	12166-ZW9-000	STOPPER, ENGINE SIDE	2	2	2	2	2	2		
2	12210-ZW9-000ZA	HEAD COMP., CYLINDER *NHS* DARK GRAY	1	1	1	1	1	1		
3	12251-ZW9-003	GASKET, CYLINDER HEAD	1	1	1	1	1	1		
4	12310-ZW9-000	COVER COMP., HEAD	1	1	1	1	1	1		
5	12312-ZW9-000	PACKING, HEAD COVER	1	1	1	1	1	1		
6	15611-921-000	CAP, OIL (NO GAUGE)	1	1	1	1	1	1		
7	16617-ZW9-000 16617-ZW9-010	HOLDER, CABLE	1	1	1	1	1	1	----- SC,S6 1001800 LHC,LHD	



① Address number

- Address No. is provided (in place of the page No.) to help you refer to the part with the part No. or part name.

② Block title ③ Block number

④ Service item/Flat rate time

⑤ Reference number

- Title number marked with the parenthesis or parentheses indicates that it continues from the previous page.

⑥ Part number ⑦ Honda color code

⑧ Description

⑨ Assemblies

- Sections framed with broken lines in the exploded view drawings are available as complete assemblies. (Their individual parts can also be obtained.)

⑩ Color description

⑪ Note

- Notes are shown with the parentheses in the part name column.

⑫ Required quantity

- Required QTY shown in the parenthesis or parentheses indicates the optional part.
- Required QTY marked with "N" Indicates the optional part that should be selected as needed.
- Required QTY indicates the number of the part used in the block.

⑬ Serial number

⑭ Type

- When the type column is blank, it indicates that the part is applicable to all types.
- As the type of the actual unit may differ from the "parts catalogue, type" please refer to "Models, types and applicable serial numbers" for confirmation.

⑮

- Parts enclosed within a dotted line are covered in a different block.

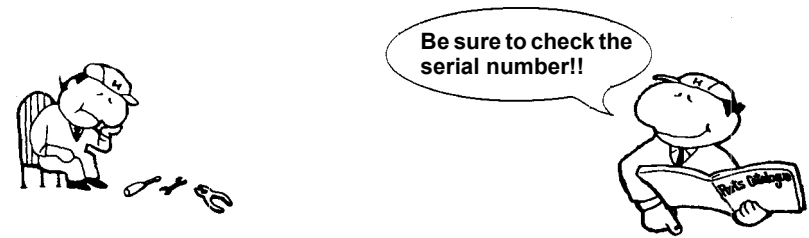
⑯

- A hollow arrow indicates the block No. for the parts enclosed within a dotted line .

⑰

- A solid arrow indicates the block No. the part in question is connected to.

When the parts were revised



Ref. No.	Part No.	Description	Reqd. QTY						Serial No.
			BF 9.9D1	BFP 9.9D1	BF 10D1	BFP 10D1	BF 10B1	BFP 10B1	
1	12166-ZW9-000	STOPPER, ENGINE SIDE	2	2	2	2	2	2	
2	12210-ZW9-000ZA	HEAD COMP., CYLINDER							
		NH8.....DARK GRAY	1	1	1	1	1	1	
3	12251-ZW9-003	GASKET, CYLINDER HEAD	1	1	1	1	1	1	
4	12310-ZW9-000	COVER COMP., HEAD	1	1	1	1	1	1	
5	12312-ZW9-000	PACKING, HEAD COVER	1	1	1	1	1	1	
6	15611-921-000	CAP, OIL (NO GAUGE)	1	1	1	1	1	1	
7	16617-ZW9-000	HOLDER, CABLE (###)	1	1	1	1	1	1	
	16617-ZW9-010		1	1	1	1	1	1	

The number has been used from the initial model without revision.

When shown at the left side, it is applicable to the models of No.1001801 and the subsequent numbers.

When shown at the right side, it is applicable to the models up to No.1001800.

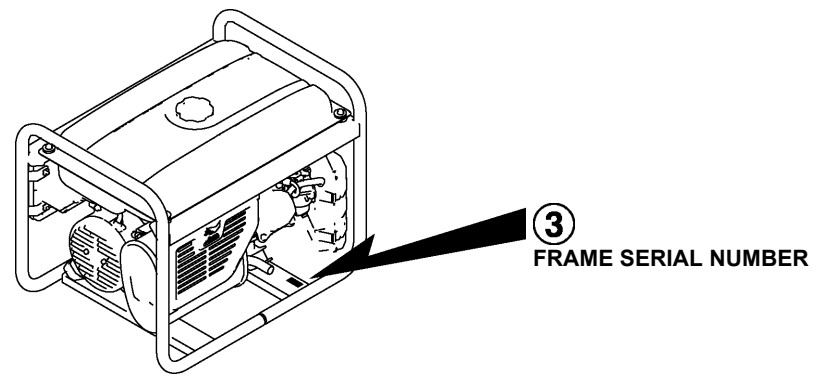
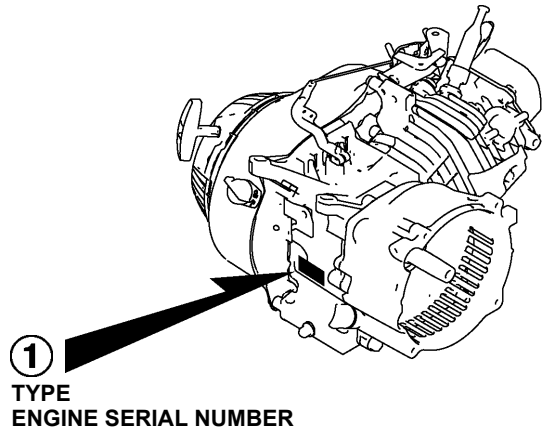
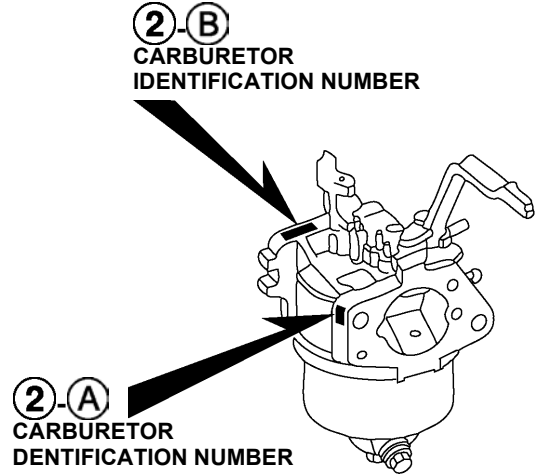
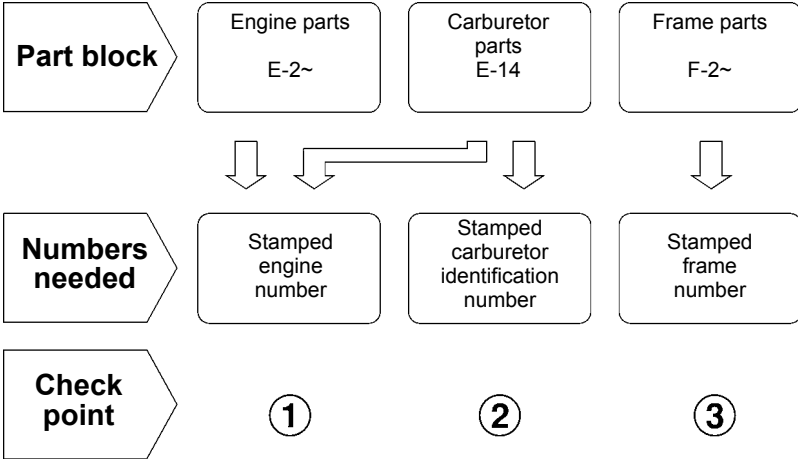
• The parts listed with "###" at the end of the parts name have limited supply period (parts not for sale).

Abbreviations used in the parts catalogue

• The following abbreviations are used in the parts name column.

- A Ampere
- A.C. Alternating current
- ASSY. Assembly
- AT. Automatic transmission
- C.D.I. Capacitive discharge ignition
- COMP. ... Complete
- D.C. Direct current
- EX. Exhaust
- G.F.C.I ... Ground fault circuit interruptor
- HEX. Hexagonal
- H.S.T. Hydrostatic transmission
- FR.Front
- IN.Inlet
- L (100L) .Link (100 Links)
- L.Left
- MMMillimeter
- MT.Manual Transmission
- P.T.O.Power take off
- R.Right
- RR.Rear
- STD.Standard
- T (22T) ...Tooth (22 Teeth)
- VVolt
- WWatt

How to check the part block and serial numbers



Models, parts catalogue codes and applicable serial numbers

- Models, parts catalogue codes and applicable serial Nos. given in this parts catalogue can be identified as follows.

Model	Type	Parts catalogue type	Engine		Applicable engine serial No.	Applicable frame serial No.	Applicable carburetor identification No.
			Model	Type			
ER2500CX	RH	RH	GP160H	EY1	GCASH-1000001~	ECCC-1000001~	BE67N A

* Of carburetor identification numbers, only the portions underlined in the example below are used for registration.

BE 67N A KC †
 Ⓐ Ⓑ

Fuel hose, general purpose hoses and vinyl hose

- The standard part fuel hose, general purpose hose and vinyl hose may be substituted by the coiled bulk part.
- When ordering the standard part fuel hose, general purpose hose and vinyl hose use the bulk part number written in the parts catalog in brackets () underneath the part name.
- When exchanging the hose, cut and use at the specified length as mentioned in the part name.
(For the method of cutting the bulk part, and method of filling out orders etc., please refer to the instructions issued with the bulk part.)

Bulk part number of fuel hose, general purpose hose and vinyl hose.

Example: 9 5 0 0 1 - 7 5 0 0 1 - 5 0 M

Bulk part number:
Refers to the bulk part.

Marking code (fuel hose and general purpose hose)

Change code (Vinyl hose)

Indicates number mark or change sequence, however, the code for the bulk part must be strictly 0 (zero).

Types of code:

- | | | | | | |
|-------------|--|----------------|-------------|--------------|---------------|
| • Fuel hose | 2: Red outside braid
(3 mm inside dia. only) | • General hose | 1: Ash gray | • Vinyl hose | 1: Clear |
| | 5: Black inside braid | | 2: Ash gray | | 2: Black |
| | 3: Red (3 mm inside dia. only) | | 3: Black | | 3: Light red |
| | 4: Ash gray with red stripe
(3 mm inside dia. only) | | 5: Black | | 6: Light red |
| | 6: Black | | | | 7: Pale black |

Lengths:

- 001: 1 m (standard)
003: 3 m
008: 8 m } Application or specification of some parts is not settled.

I.D code: (fuel hose and general purpose hose)

- | | | | | |
|------------|--------------------|--------------------|-----------------------------|-----------------------------|
| 30: 3.0 mm | 50: 5.0 mm | 70: 7.0 mm | 11: 11 mm | 12: 12 (outside dia. 17) mm |
| 35: 3.5 mm | 55: 5.3 mm, 5.5 mm | 75: 7.3 mm, 7.5 mm | 91: 12 (outside dia. 15) mm | 14: 14 mm |
| 45: 4.5 mm | 65: 6.5 mm | 80: 8.0 mm | 92: 12 (outside dia. 16) mm | 17: 17 mm |

ID./OD. code: (vinyl hose)

- | | | | | |
|-------------------------|--------------------------|---------------------------|---------------------------|---------------------------|
| 01: ID. 2.9, OD. 6.8 mm | 12: ID. 5.0, OD. 7.0 mm | 21: ID. 8.0, OD. 9.0 mm | 37: ID. 11.0, OD. 15.0 mm | 50: ID. 16.0, OD. 19.0 mm |
| 03: ID. 3.0, OD. 6.0 mm | 10: ID. 5.0, OD. 8.0 mm | 23: ID. 8.0, OD. 12.0 mm | 38: ID. 12.0, OD. 13.0 mm | 55: ID. 17.5, OD. 20.5 mm |
| 05: ID. 3.5, OD. 6.5 mm | 11: ID. 5.0, OD. 9.0 mm | 25: ID. 9.0, OD. 11.0 mm | 39: ID. 12.0, OD. 14.0 mm | 60: ID. 22.0, OD. 27.0 mm |
| 07: ID. 4.0, OD. 7.0 mm | 14: ID. 6.0, OD. 9.0 mm | 27: ID. 9.0, OD. 13.0 mm | 40: ID. 12.0, OD. 16.0 mm | |
| 08: ID. 4.5, OD. 6.5 mm | 17: ID. 7.0, OD. 9.0 mm | 33: ID. 10.0, OD. 14.0 mm | 43: ID. 13.0, OD. 15.0 mm | |
| 09: ID. 4.5, OD. 8.0 mm | 19: ID. 7.0, OD. 11.0 mm | 36: ID. 11.0, OD. 13.0 mm | 45: ID. 14.0, OD. 18.0 mm | |

Hose type:

- 1: Fuel hose
3: Vinyl hose
5: General hose

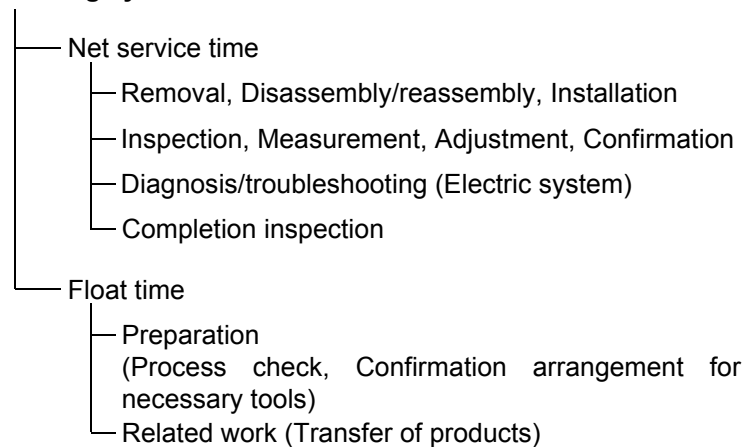
⊙ **CAUTION: It is DANGEROUS to confuse the fuel hose with the general purpose hose or vinyl hose.**

Never use a general purpose hose or vinyl hose in place of a fuel hose or vice versa. Always use the correct bulk part in the parts catalogue, according to the service manual or the instructions issued with the bulk part.

FLAT RATE SERVICE TIME

Flat rate service time (FRT) means the standard time required to service a product, which is listed in this manual to help the dealers control the actual working process and calculate the service charge by using it as a guide.

FRT setting system



* Float time is set by multiplying the net service time by a given coefficient.

Editorial style

The service items shown in the text are listed with the exchange work time for the repair sales parts as the subject. Other representative service items not using repair parts (removal/installation, adjustment, inspection/measuring, and other work) are listed collectively in the list in the preface, classified according to the work.

FRT setting standard

- Decimal system (in unit of 0.1) is adopted to set FRT as it is convenient to calculate the wage.
Example: (0.1) → 6 minutes, (0.2) → 12 minutes
[Labor cost per hour] x [FRT] = [Wage]
- FRT is set with a hand tool.
- Service items and FRT can be subject to change depending on development of tools and service equipment and improvement in service procedure.

Work procedure

- As the work procedure is set with the work time according to the method in the separate Service Manual, refer to this Manual as required.
- Work methods permitting servicing in the shortest time still permitting assurance of safe work and product warranty are used for the setting of service items not listed in the Service Manual.
- Work basically is to be performed by one person, and when two or more people are required, setting is done as the total time for the number of people.
- The set value for the technological level of the workers uses a person with three years of experience in the repair of Honda products as the standard.
- Special tools and service equipment used to set FRT are those specified or recommended in Service Manual.

Service item whose FRT is not presented

- Accessories and service parts that are not listed to use in this manual.
 - Locations with little aging deterioration or breakage during normal use.
 - Service work that can be finished by one touch.
 - Service work that is seldom done (i.e. extremely small causes of trouble and service frequency).
 - Products and parts whose location for installation differs according to its status of use and application.
- * When FRT is not presented, please calculate wages based on appropriate actual work time.

Operation not included of FRT

- Oil and coolant water draining, Waiting time for warming up operation and etc..
- Additional operation that involves removal/installation of standard exterior equipment.
- Indirect time spent for service by visiting the customer, trade-in, and delivery.
- Indirect time required for ordering and delivery of parts.
- Cost for grease, adhesive agent, etc. used for service work.

**Explanation of FRT by using an example
(The example may differ from the actual presented items)**

Ref. No.	L.O.N.	(Relative ref. Number) Description	F.R.T.
①	1111L1	(1, 3, 4, 7) VALVE, INTAKE 4.1	②
②		• NOTE: OHV type	③
③	1111L1A	• Includes: Engine removal and installation One head (intake all) add 1.4	④

- ① Reference No. of the illustration of part that shows location of the replacement work.
- ② FRT is an abbreviation of Flat Rate Time indicating the standard service time required for the replacement.
- ③ LON is an abbreviation of Labor Operation Number, and it is a classification of the service items by the work unit code.

The same operation code is used regardless of the models.

Standard operation is indicated with 6 digits code, and additional operation is indicated with 7 digits code.

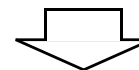
- ④ Indicating the intake valve replacement and FRT4.1.
- ⑤ Indicating FRT1.4 that will be added when additional operation (whole intake side of one cylinder head) is done in association with intake valve replacement.

- ⑥ Indicating work condition or application condition of the service item.
- ⑦ Indicating work contents that are included in the service item.
- ⑧ Indicating a reference No. whose operation and time are the same as FRT4.1 for the intake valve.

(The application range is limited to the service items without an LON setting within a same block.)

**How to refer to the service item by using the sample
(intake valve replacement)**

Open to the page of the block where the intake valve's spare part illustration is shown.



Look for the intake valve illustration, and refer to the service item and FRT that agree with the reference No.

Indication mark for the listing of service items that continues to the following page

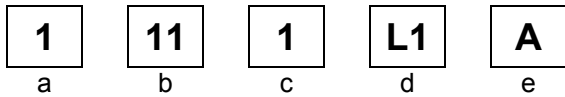
Ref. No.	L.O.N.	(Relative ref. Number) Description	F.R.T.
2	1111L1	VALVE, INTAKE	4.1
	.	.	.
	.	.	.

+
Mark indicated at the last line.

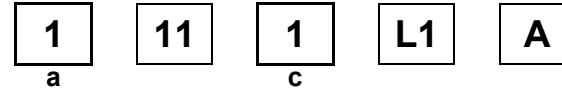
Indication of the block with no setting of FRT

Ref. No.	L.O.N.	(Relative ref. Number) Description	F.R.T.
NO INFORMATION			

• LON code system



- a) Category code..... Engine
- b) Location/function code..... Engine upper
- c) Operation code..... Replace
- d) Operation sequence number (Unit code can be shown with alphabet)
..... Intake valve
(No regular rule of code)
- e) Additional code One head (intake all)
(No regular rule of code)



a) Category codes and classification

Code	Category
1	Engine
2	Power drive
3	Fuel & Exhaust
4	Frame & Body
5	Steering
6	Electrical
7	Axle & Brake
8	Control system
9	-
0	Attachments

c) Operation codes and classification

Code	Operation category
1	Replace, Removal/Installation, Change
2	Overhaul
3	Adjust, Rotation
4	(Paint-related work: Top-coat)
5	Test, Inspect/diagnose, Measurement
6	(Overhaul-related work: Rebore)
7	(Overhaul-related work: Reseal)
8	(Resurface)
9	(Paint-related work: Refinish)
0	Repair, Cleaning, Air bleeding

Major service items without using spare parts
Removal/Installation, Adjustment, Inspection/Measurement, Overhaul, Other work

E: Engine, T: Transmission, D: Drive system, B: Body and related parts

• Removal/Installation

Set with the parts configuration in the status of being removed from the product.

	LON	DESCRIPTION	FRT
E	1001A0	ENGINE AND GENERATOR-REMOVAL/INSTALLATION	0.4

• Adjustment

	LON	DESCRIPTION	FRT
E	1113A1	VALVE CLEARANCE-ADJUSTMENT NOTE: For 1 product	0.4
	1163A0	CONTROL, THROTTLE/GOVERNOR-ADJUSTMENT	0.2
	3113A2	CARBURETOR IDLE-ADJUSTMENT	0.2

• Inspection/Measurement

	LON	DESCRIPTION	FRT
E	1105A0	ENGINE OIL-INSPECTION	0.1
	1115A0	CYLINDER COMPRESSION-TEST	0.2

• Overhaul

Work condition: The required Measurements, inspections, adjustments, and cleaning/washing of each part are performed, including the main body removal/installation work and the replacement of defective parts.

	LON	DESCRIPTION	FRT
E	3112A0	CARBURETOR-OVERHAUL INCLUDES: All necessary adjustment	0.6

• Other work

	LON	DESCRIPTION	FRT
E	1101E1	ENGINE OIL-CHANGE INCLUDES: Engine oil-inspection	0.2
	3120A0	AIR CLEANER-CLEANING INCLUDES: Air cleaner-inspection	0.2
	6140A0	SPARK PLUG-ADJUSTMENT/CLEANING INCLUDES: Spark plug check NOTE: For 1 product	0.1

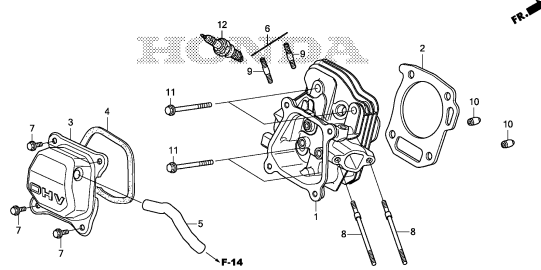
ENGINE GROUP

B13

E-2

CYLINDER HEAD

C 1

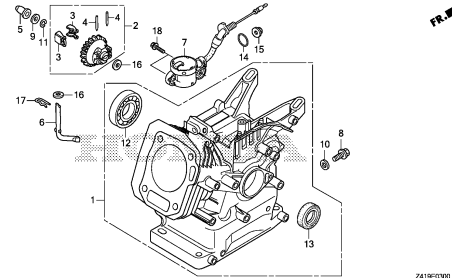


Z419E0200

E-3

CYLINDER BARREL

C 2

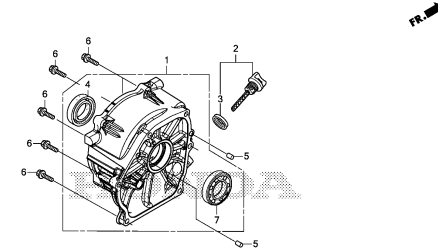


Z419E0300

E-6

CRANKCASE COVER

C 3

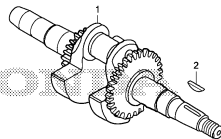


Z419E0600

E-7

CRANKSHAFT

C 4

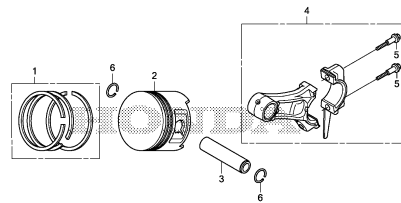


Z419E0700

E-8

PISTON

C 5

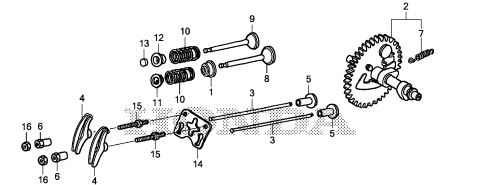


Z419E0800

E-9

CAMSHAFT

C 6

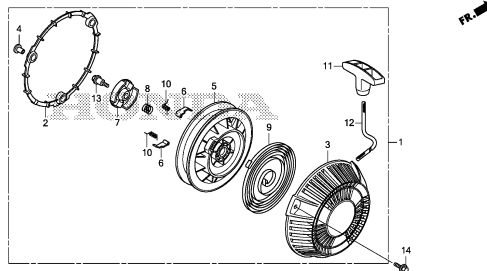


Z419E0900

E-11

RECOIL STARTER

C 9

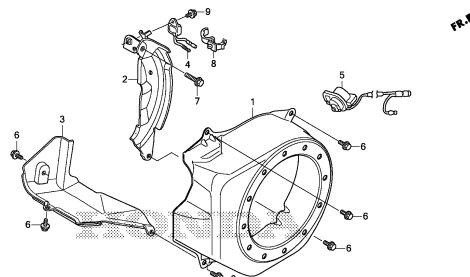


Z419E1100

E-12

FAN COVER

C10

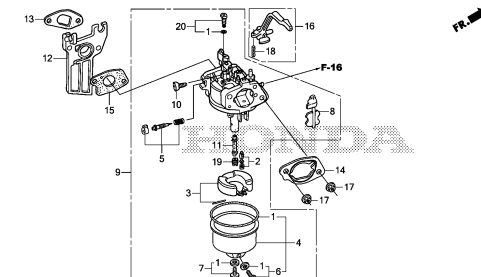


Z419E1200

E-14

CARBURETOR

C11



Z419E1400

2

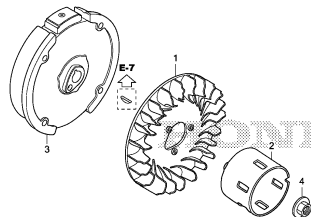
ENGINE GROUP

B14

E-19

FLYWHEEL

C12

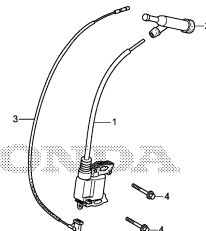


Z419E1900

E-20

IGNITION COIL

C13

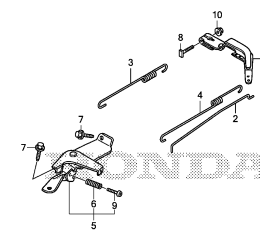


Z419E2000

E-22

CONTROL

C14

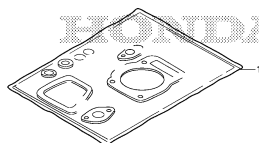


Z419E2200

EOP-1

GASKET KIT

C15



Z419X0100

2

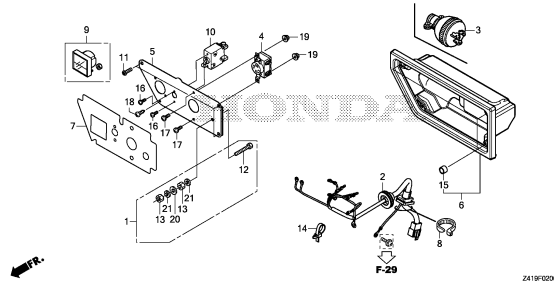
FRAME GROUP

B15

F-2

CONTROL PANEL

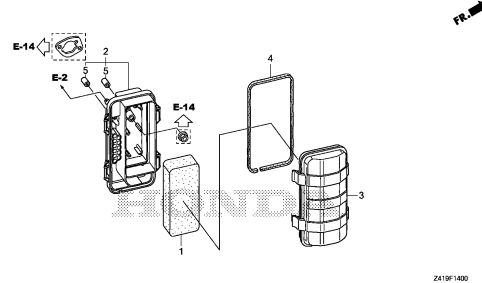
D 1



F-14

AIR CLEANER

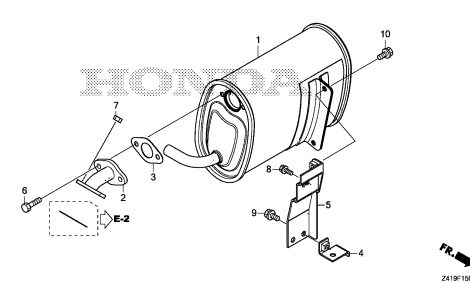
D 2



F-15

MUFFLER

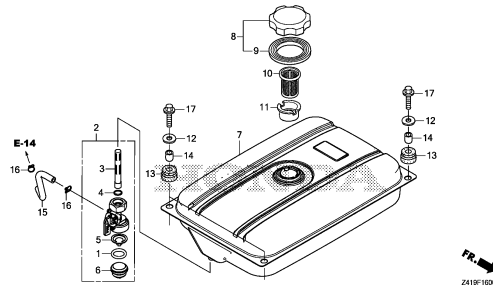
D 3



F-16

FUEL TANK

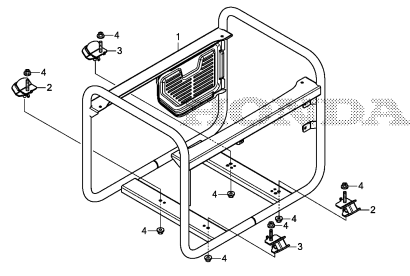
D 4



F-25

FRAME

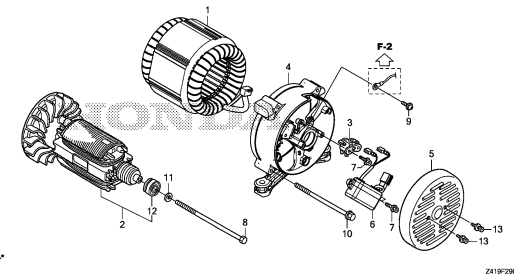
D 5



F-29

ROTOR/STATOR

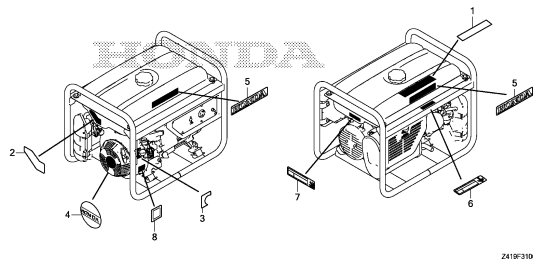
D 6



F-31

LABEL

D 7

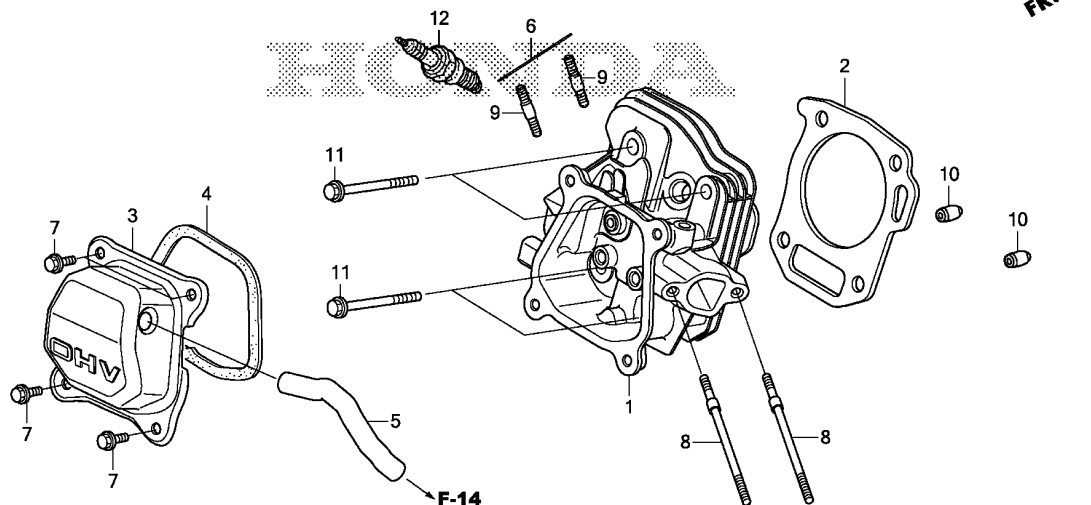


3

E-2

CYLINDER HEAD

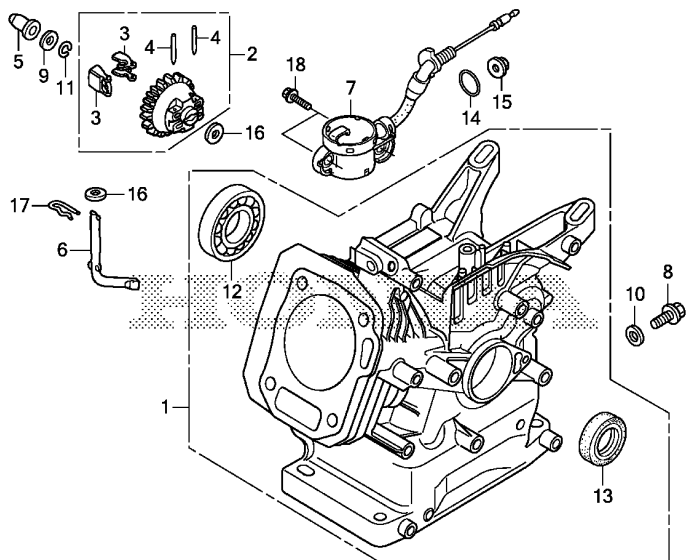
C 1



Z419E0200

Ref. No.	L.O.N.	(Relative ref. Number) Description	F.R.T.
1	1111N3	HEAD, CYLINDERINCLUDES: Valve clearance adjustment and reface	1.1
2	1111N4	GASKET, CYLINDER HEAD (4)	0.7
3	1111D5	CYLINDER HEAD COVER AND/OR PACKING	0.2
5	1111K5	TUBE, BREATHER	0.1
6	3131B4	GASKET, EXHAUST MUFFLER	0.2
12	6141C1	PLUG, SPARK	0.1
			.INCLUDES: Spark plug check

Ref. No.	Part No.	Description	Reqd. QTY		Serial No.	Parts catalogue code
			ER	CX		
1	12210-Z1T-405	HEAD COMP., CYLINDER	1			
2	12251-ZL0-003	GASKET, CYLINDER HEAD (NIPPON LEAKLESS)	1			
3	12310-ZE1-020	COVER COMP., HEAD	1			
4	12312-Z1T-701	PACKING, HEAD COVER (NINGBO SIL GASKET)	1			
5	15721-Z1T-D40	TUBE, BREATHER	1			
6	18381-Z1T-701	GASKET, MUFFLER (NINGBO SIL GASKET)	1			
7	90013-883-000	BOLT, FLANGE, 6X12(CT200) ...	4			
8	90043-ZDK-D10	BOLT, STUD, 6X103.5	2			
9	90047-ZDK-000	BOLT, STUD, 8X32	2			
10	94301-10160	DOWEL PIN, 10X16	2			
11	95701-08060-00	BOLT, FLANGE, 8X60	4			
12	98079-55846	PLUG, SPARK (BPR5ES) (NGK) ...	(1)			
	98079-55855	PLUG, SPARK (W16EPR-U) (DENSO)	(1)			
	98079-56846	PLUG, SPARK (BPR6ES) (NGK)	1			
	98079-56855	PLUG, SPARK (W20EPR-U) (DENSO)	1			



FR. →

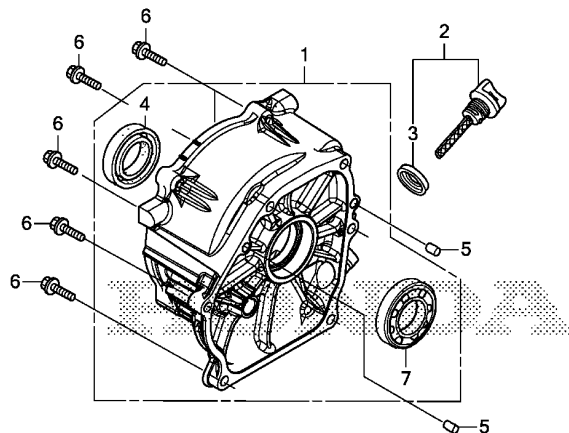
Z419E0300

Ref. No.	L.O.N.	(Relative ref. Number) Description	F.R.T.
1	1101A0	BARREL, CYLINDERINCLUDES: Engine removal and installation	2.6
2	1161C4	GOVERNOR ASSEMBLYINCLUDES: Engine removal and installation	2.1
5	1161B6	SLIDER, GOVERNORINCLUDES: Engine removal and installation	2.1
6	1161B4	SHAFT, GOVERNOR ARMINCLUDES: Engine removal and installation	2.0
7	6151E8	SWITCH, OIL LEVELINCLUDES: Engine removal and installation	1.4
12	1101A7	BEARING, CRANKSHAFT :RIGHTINCLUDES: Engine removal and installation	2.3
13	1101E3	OIL SEAL, CRANKSHAFT :RIGHT .. .INCLUDES: Engine removal and installation	2.2

Ref. No.	Part No.	Description	Reqd. QTY		Serial No.	Parts catalogue code
			ER	2500		
1	12000-ZDK-407	BARREL ASSY., CYLINDER	1			
2	16510-Z1T-000	GOVERNOR ASSY.	1			
3	16511-ZE1-000	WEIGHT, GOVERNOR	2			
4	16513-ZE1-000	PIN, GOVERNOR WEIGHT	2			
5	16531-Z1T-000	SLIDER, GOVERNOR	1			
6	16541-Z1T-000	SHAFT, GOVERNOR ARM	1			
7	35480-Z0T-003	SWITCH ASSY., OIL LEVEL	1			
8	90131-ZE1-000	BOLT, DRAIN PLUG	1			
9	90451-Z1T-000	WASHER, THRUST, 6MM	1			
10	90601-ZE1-000	WASHER, DRAIN PLUG, 10.2MM ..	1			
11	90602-ZE1-000	CLIP, GOVERNOR HOLDER	1			
12	91001-Z1T-003	BEARING, RADIAL BALL, 6205	1			
		(NSK)	1			
	91001-ZF1-003	BEARING, RADIAL BALL(6205TMB)	1			
		(NTN)	1			
	91001-ZF1-004	BEARING, RADIAL BALL(6205SH)	1			
		(KOYO)	1			
13	91202-Z1T-003	OIL SEAL, 25X41X6	1			
14	91353-Z7E-003	O-RING, 14MM	1			
15	94050-10000	NUT, FLANGE, 10MM	1			
16	94101-06800	WASHER, PLAIN, 6MM	2			
17	94251-08000	PIN, LOCK, 8MM	1			
18	95701-06012-00	BOLT, FLANGE, 6X12	2			



FR. →



Z419E0600

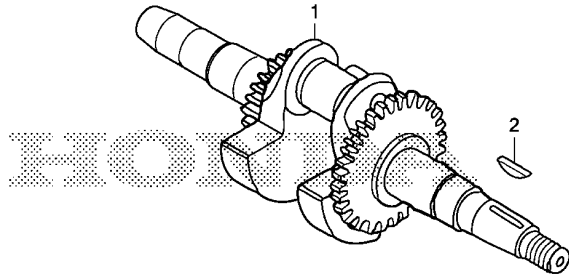
Ref. No.	L.O.N.	(Relative ref. Number) Description	F.R.T.
1	1101F1	COVER, CRANKCASEINCLUDES: Engine removal and installation	1.1
4	1101C0	OIL SEAL, CRANKSHAFT :LEFTINCLUDES: Engine removal and installation	1.2
7	1101A5	BEARING, CRANKSHAFT :LEFTINCLUDES: Engine removal and installation	1.3

Ref. No.	Part No.	Description	Reqd. QTY		Serial No.	Parts catalogue code
			ER	CX		
1	11300-ZDK-D10	COVER ASSY., CRANKCASE	1			
2	15600-Z1T-000	CAP ASSY., OIL FILLER	1			
3	15625-Z1T-000	PACKING, OIL FILLER CAP	1			
4	91202-Z1T-003	OIL SEAL, 25X41X6	1			
5	94301-08140	DOWEL PIN, 8X14	2			
6	95701-08032-00	BOLT, FLANGE, 8X32	6			
7	96100-62050-00	BEARING, RADIAL BALL, 6205 ..	1			

E-7

CRANKSHAFT

C 4



Z419E0700

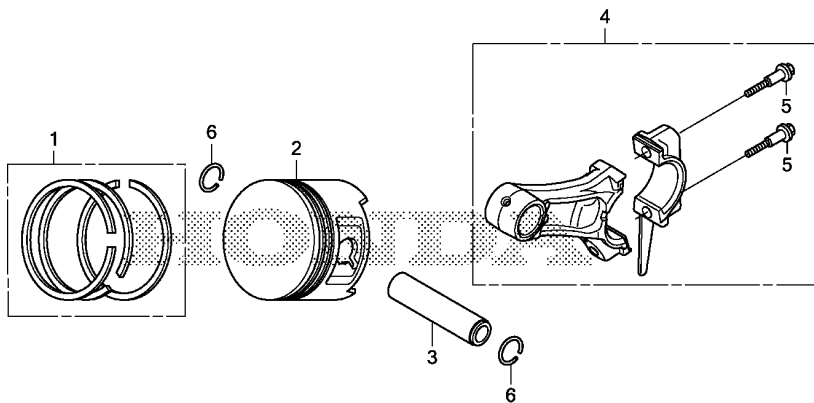
Ref. No.	L.O.N.	(Relative ref. Number) Description	F.R.T.
----------	--------	------------------------------------	--------

1	1101F0	CRANKSHAFT INCLUDES: Engine removal and installation	2.1
---	--------	---	-----

Ref. No.	Part No.	Description	Reqd. QTY	Serial No.	Parts catalogue code
			ER 2500 CX		
1	13310-Z1T-F00	CRANKSHAFT COMP.	1		
2	13331-357-000	KEY, SPECIAL WOODRUFF, 25X18	1		

2

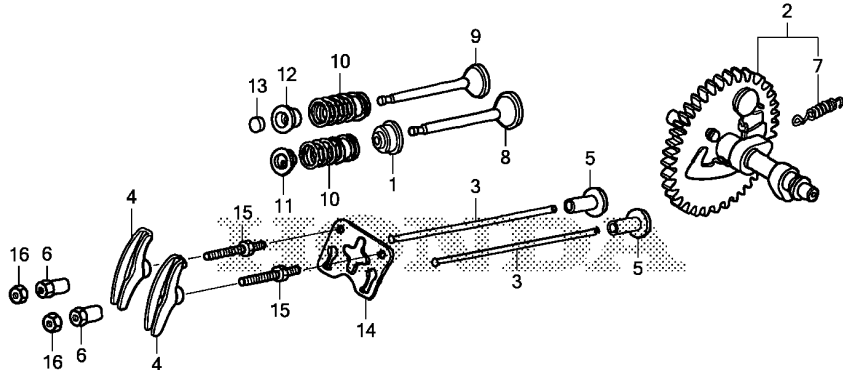
FR. →



Z419E0800

Ref. No.	L.O.N.	(Relative ref. Number) Description	F.R.T.
2	1111R1	(1,3,4) PISTON AND/OR RING SET AND/OR BEARING AND/OR RODINCLUDES: Engine removal and installation .INCLUDES: Inspection/Measurement/Cleaning	2.2

Ref. No.	Part No.	Description	Reqd. QTY	Serial No.	Parts catalogue code
			ER 2500 CX		
1	13010-Z4K-004	RING SET, PISTON(STD.) (TPR) -	1		
	13010-Z4P-003	RING SET, PISTON(STD.) (RIKEN)	1		
	13011-Z4K-004	RING SET, PISTON(0.25) (TPR) -	(1)		
	13011-Z4P-003	RING SET, PISTON(0.25) (RIKEN)	(1)		
	13012-Z4K-004	RING SET, PISTON(0.50) (TPR) -	(1)		
	13012-Z4P-003	RING SET, PISTON(0.50) (RIKEN)	(1)		
	13013-Z4K-004	RING SET, PISTON(0.75) (TPR) -	(1)		
	13013-Z4P-003	RING SET, PISTON(0.75) (RIKEN)	(1)		
2	13101-Z1T-010	PISTON(STD.) (JIALING-HONDA) -	1		
	13102-Z1T-000	PISTON(0.25)	(1)		
	13103-Z1T-000	PISTON(0.50)	(1)		
	13104-Z1T-000	PISTON(0.75)	(1)		
3	13111-Z1T-000	PIN, PISTON	1		
4	13200-Z1T-600	ROD ASSY., CONNECTING(JLH) ..	1		
5	90001-Z1T-000	BOLT, CONNECTING ROD	2		
6	90551-ZE1-000	CLIP, PISTON PIN, 18MM	2		



FR. →

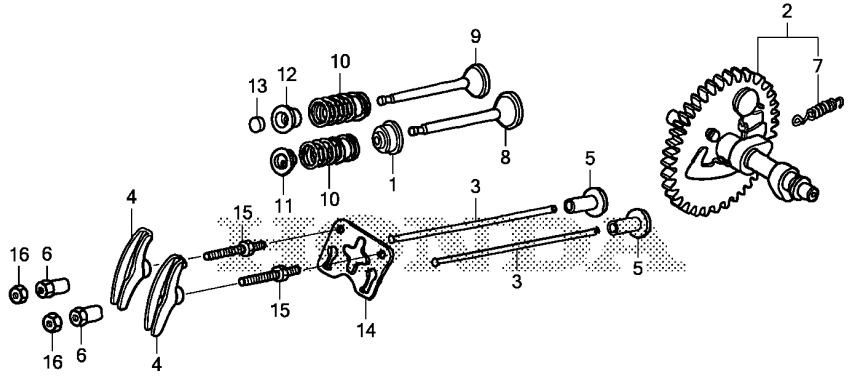
Z419E0900

Ref. No.	L.O.N.	(Relative ref. Number) Description	F.R.T.
1	1111K2	SEAL, INTAKE VALVE STEMINCLUDES: Valve clearance adjustment	0.8
2	1111C2	CAMSHAFTINCLUDES: Engine removal and installation .INCLUDES: Valve clearance adjustment	1.3
3	1111L6	ROD, PUSH :INTAKEINCLUDES: Valve clearance adjustment	0.2
	1111L7	ROD, PUSH :EXHAUSTINCLUDES: Valve clearance adjustment	0.2
	1111L8	ROD, PUSH :BOTHINCLUDES: Valve clearance adjustment	0.3
4	1111A2	ARM, ROCKER :INTAKEINCLUDES: Valve clearance adjustment	0.2
	1111A2A	.Replace exhaust rocker arm add	0.1
+	1111A1	ARM, ROCKER :EXHAUST	0.2

Ref. No.	Part No.	Description	Reqd. QTY		Serial No.	Parts catalogue code
			ER	2500		
				CX		
1	12209-ZH8-003	SEAL, VALVE STEM	1			
2	14100-Z1T-810	CAMSHAFT ASSY.(JLH)	1			
3	14410-ZE1-010	ROD, PUSH	2			
4	14431-ZE1-000	ARM, VALVE ROCKER	2			
5	14441-ZE1-010	LIFTER, VALVE	2			
6	14451-Z7E-000	PIVOT, ROCKER ARM	2			
7	14568-ZE1-000	SPRING, WEIGHT RETURN	1			
8	14711-ZF1-000	VALVE, IN.	1			
9	14721-ZF1-000	VALVE, EX.	1			
10	14751-ZF1-000	SPRING, VALVE	2			
11	14771-ZE1-000	RETAINER, IN. VALVE SPRING ..	1			
12	14773-ZE1-000	RETAINER, EX. VALVE SPRING ..	1			
13	14781-ZE1-000	ROTATOR, VALVE	1			
14	14791-ZE1-010	PLATE, PUSH ROD GUIDE	1			
15	90012-ZE0-010	BOLT, PIVOT, 8MM	2			
16	90206-ZE1-000	NUT, PIVOT ADJUSTING	2			

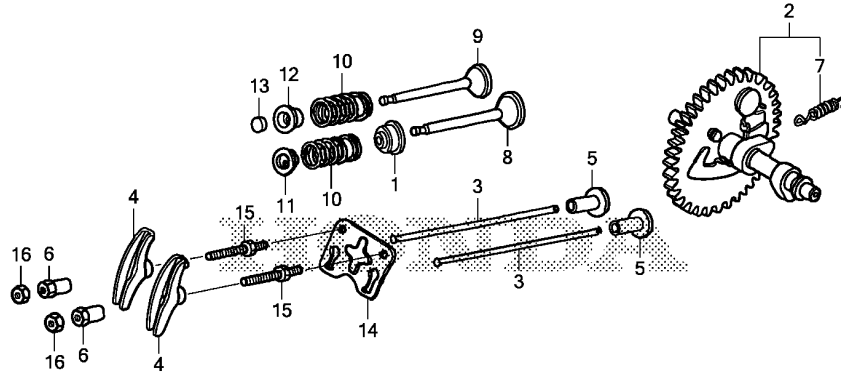


FR. →



Z419E0900

Ref. No.	L.O.N.	(Relative ref. Number) Description	F.R.T.
+ 4		.INCLUDES: Valve clearance adjustment	
1111A1A		.Replace intake rocker arm add	0.1
5 1111L9		LIFTER, VALVE :INTAKE	1.3
		.INCLUDES: Engine removal and installation	
		.INCLUDES: Valve clearance adjustment	
1111M0		LIFTER, VALVE :EXHAUST	1.3
		.INCLUDES: Engine removal and installation	
		.INCLUDES: Valve clearance adjustment	
1111M1		LIFTER, VALVE :BOTH	1.3
		.INCLUDES: Engine removal and installation	
		.INCLUDES: Valve clearance adjustment	
8 1111L1		VALVE, INTAKE	0.9
		.INCLUDES: Valve clearance adjustment and reface	
		.Replace intake and exhaust all add	0.2
+ 9 1111L0		VALVE, EXHAUST	0.9

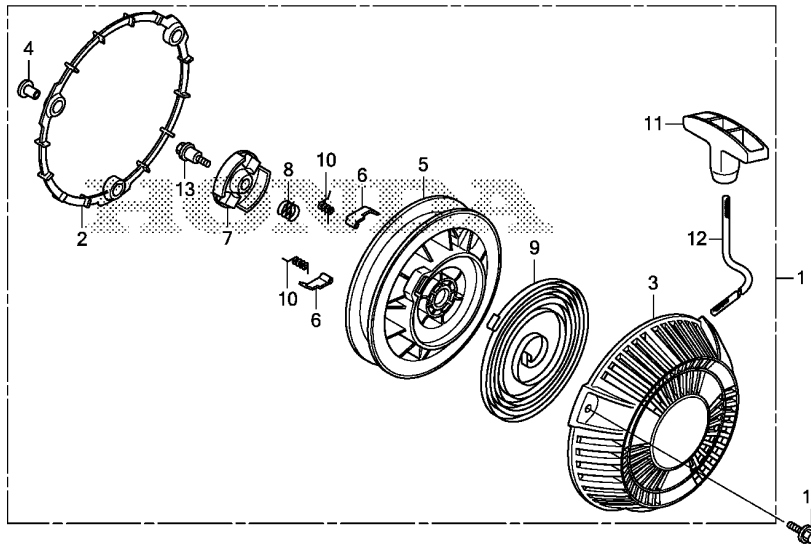


FR. →

Z419E0900

Ref. No.	L.O.N.	(Relative ref. Number) Description	F.R.T.
+ 9		.INCLUDES: Valve clearance adjustment and reface	
1111L0E		.Replace intake and exhaust all add	0.2
10	1111P3	SPRING, VALVE :INTAKE	0.8
		.INCLUDES: Valve clearance adjustment	
1111P3A		.Replace intake and exhaust all add	0.1
1111P4		SPRING, VALVE :EXHAUST	0.8
		.INCLUDES: Valve clearance adjustment	
1111P4A		.Replace intake and exhaust all add	0.1
13	1111J7	ROTATOR, VALVE	0.2
		.INCLUDES: Valve clearance adjustment	

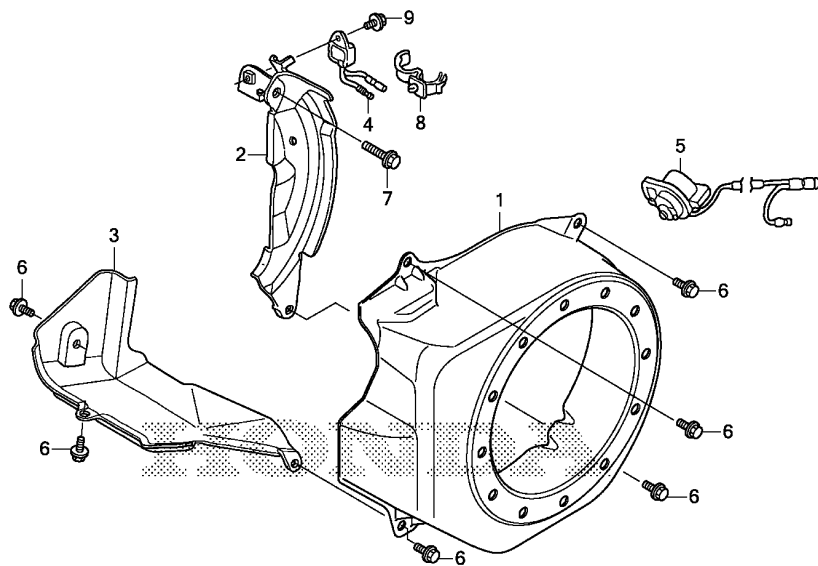




Z419E1100

Ref. No.	L.O.N.	(Relative ref. Number) Description	F.R.T.
1	1121B9	STARTER, RECOIL	0.1
5	1121B1	REEL, RECOIL STARTER	0.3
6	1121B0	STARTER RATCHET AND/OR SPRING .NOTE: Same time for two units (8)	0.2
7	1121A4	GUIDE, RATCHET	0.2
9	1121B7	SPRING, RECOIL STARTER RETURN	0.3
11	1121A3	GRIP, RECOIL STARTER	0.1
12	1121B3	ROPE, RECOIL STARTER	0.3

Ref. No.	Part No.	Description	Reqd. QTY		Serial No.	Parts catalogue code
			ER	2500 CX		
1	28400-ZDL-003	STARTER ASSY., RECOIL	1			
2	28405-ZDL-003	SPACER, RECOIL STARTER				
3	28414-ZDK-003	CASE, RECOIL STARTER	1			
4	28417-ZDL-003	COLLAR, RECOIL STARTER				
5	28421-ZDK-003	REEL, RECOIL STARTER	1			
6	28422-ZDK-003	RATCHET, STARTER	2			
7	28433-ZDK-003	GUIDE, RATCHET	1			
8	28441-ZDK-003	SPRING, FRICTION	1			
9	28442-ZDK-003	SPRING, RECOIL STARTER	1			
10	28443-ZDK-003	SPRING, RETURN	2			
11	28461-ZDK-003	KNOB, RECOIL STARTER	1			
12	28462-ZDK-003	ROPE, RECOIL STARTER	1			
13	90003-ZDK-003	SCREW, SETTING	1			
14	95701-06025-00	BOLT, FLANGE, 6X25	3			

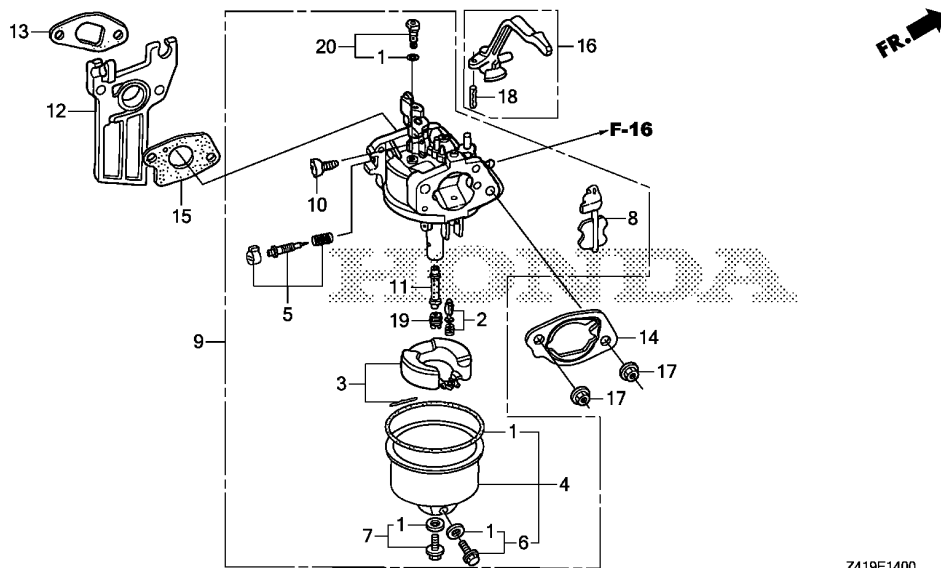


Z419E1200

Ref. No.	L.O.N.	(Relative ref. Number) Description	F.R.T.
1	1141G8	COVER, ENGINE COOLING FAN	0.2
2	1121A7	PLATE, SIDE	0.3
3	4141E3	SHROUD, ENGINE	0.2
4	6151K2	ALERT UNIT, GENERATOR OIL	0.1
5	6151D9	SWITCH, ENGINE STOP	0.2

Ref. No.	Part No.	Description	Reqd. QTY	Serial No.	Parts catalogue code
			ER 2500 CX		
1	19610-ZDK-000ZA	COVER COMP., FAN *NH31*.....MCKINLEY WHITE	1		
2	19611-ZH8-810	PLATE COMP., SIDE(OIL ALERT)	1		
3	19631-ZDK-000	SHROUD	1		
4	34150-ZH7-023	ALERT UNIT, OIL	1		
5	36100-ZF6-P82	SWITCH ASSY., ENGINE STOP ...	1		
6	90013-883-000	BOLT, FLANGE, 6X12(CT200) ...	6		
7	90022-888-010	BOLT, FLANGE, 6X20(CT200) ...	1		
8	90601-Z1T-003	CLIP, HARNESS	1		
9	95701-06008-00	BOLT, FLANGE, 6X8	1		

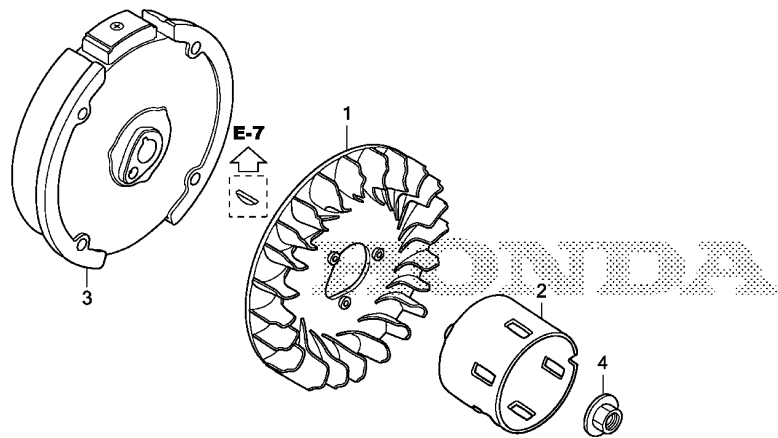




Z419E1400

Ref. No.	L.O.N.	(Relative ref. Number) Description	F.R.T.
1	3111B1	GASKET SET, CARBURETOR	0.4
2	3111E1	FLOAT VALVE SET AND/OR FLOAT SET	0.4
4	3111A3	FLOAT CHAMBER SET AND/OR GASKET	0.3
5	3111D7	SCREW SET, PILOT	0.3
8	8101C5	CHOKE SET, CARBURETOR	0.3
9	3111F3	CARBURETOR	0.3
12	3111C0	CARBURETOR INSULATOR AND/OR PACKING	0.3
14	3111D9	SPACER, CARBURETOR	0.2
15	3111C8	PACKING, CARBURETOR	0.3
16	8101F9	LEVER, CARBURETOR CHOKE	0.2
19	3111C3	JET, MAIN	0.4

Ref. No.	Part No.	Description	Reqd. QTY	Serial No.	Parts catalogue code
			ER 2500 CX		
1	16010-ZB1-015	GASKET SET	1		
2	16011-ZE0-005	VALVE SET, FLOAT	1		
3	16013-Z0S-B01	FLOAT SET	1		
4	16015-ZE0-831	CHAMBER SET, FLOAT	1		
5	16016-ZH7-W01	SCREW SET, PILOT	1		
6	16024-ZE1-811	SCREW SET, DRAIN	1		
7	16028-ZE0-005	SCREW SET	1		
8	16044-ZE0-005	CHOKE SET	1		
9	16100-Z1T-D41	CARBURETOR ASSY. (BE67N A)	1		
10	16124-ZE0-005	SCREW, THROTTLE STOP	1		
11	16166-ZH8-E80	NOZZLE, MAIN	1		
12	16211-Z1T-000	INSULATOR, CARBURETOR (JLH)	1		
13	16212-Z1T-701	PACKING, INSULATOR (NINGBO SIL GASKET)	1		
14	16220-ZE1-020	SPACER COMP., CARBURETOR	1		
15	16221-Z1T-701	PACKING, CARBURETOR (NINGBO SIL GASKET)	1		
16	16610-ZB2-000	LEVER COMP., CHOKE	1		
17	94050-06080	NUT, FLANGE, 6MM	2		
18	94305-20122	PIN, SPRING, 2X12	1		
19	99101-ZH8-0680	JET, MAIN, #68	(1)		
	99101-ZH8-0700	JET, MAIN, #70	(1)		
	99101-ZH8-0720	JET, MAIN, #72	1		
20	99204-ZE0-0350	JET SET, PILOT, #35	1		

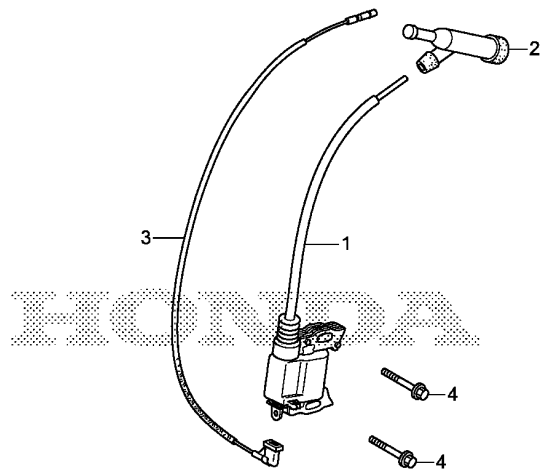


Z419E1900

Ref. No.	L.O.N.	(Relative ref. Number) Description	F.R.T.
1	1141G7	FAN, ENGINE COOLING	0.2
2	1121A9	PULLEY, RECOIL STARTER	0.2
3	2161B5	FLYWHEEL	0.3

Ref. No.	Part No.	Description	Reqd. QTY		Serial No.	Parts catalogue code
			ER	2500 CX		
1	19511-Z1T-000	FAN, COOLING	1			
2	28451-ZDL-003	PULLEY, STARTER	1			
3	31110-Z1T-004	FLYWHEEL COMP.(YUXIN)	1			
4	90201-Z1T-000	NUT, SPECIAL, 14MM	1			

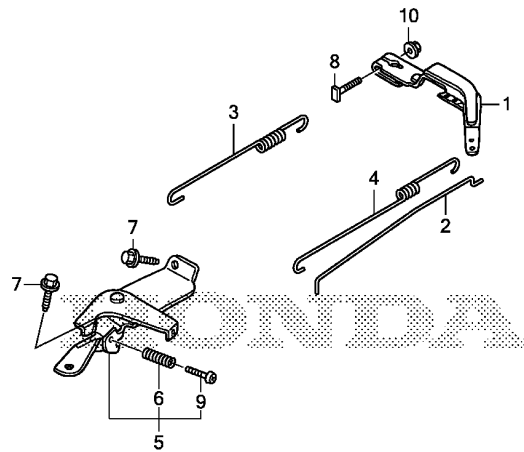




Z419E2000

Ref. No.	L.O.N.	(Relative ref. Number) Description	F.R.T.
1	6141A5	COIL, IGNITION(ONE)	0.3
2	6141B8	TERMINAL, HIGH TENSION	0.1
3	6111B3	CORD, STOP SWITCH	0.4

Ref. No.	Part No.	Description	Reqd. QTY		Serial No.	Parts catalogue code
			ER	2500 CX		
1	30500-ZDK-004	COIL ASSY., IGNITION	1			
2	30700-ZDK-004	CAP ASSY., NOISE SUPPRESSOR .	1			
3	32195-ZDK-004	CORD, STOP SWITCH	1			
4	90121-952-000	BOLT, FLANGE, 6X25(CT200) ...	2			



Z419E2200

Ref. No.	L.O.N.	(Relative ref. Number) Description	F.R.T.
1	1161A0	ARM, GOVERNOR	0.3
2	1161B1	ROD, GOVERNOR	0.3
3	1161C5	SPRING, GOVERNOR	0.3
4	1161C2	SPRING, THROTTLE RETURN	0.3
5	1161A5	CONTROL, THROTTLE/GOVERNOR ...	0.3

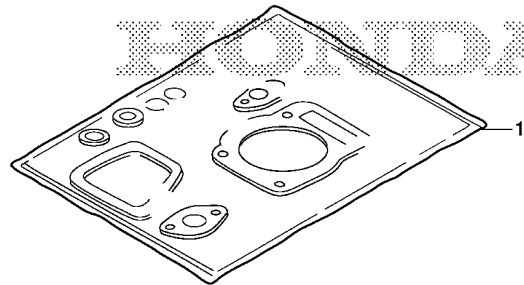
Ref. No.	Part No.	Description	Reqd. QTY		Serial No.	Parts catalogue code
			ER	2500 CX		
1	16551-ZE0-010	ARM, GOVERNOR	1			
2	16555-ZE1-000	ROD, GOVERNOR	1			
3	16561-Z1T-000	SPRING, GOVERNOR	1			
4	16562-ZE1-020	SPRING, THROTTLE RETURN	1			
5	16570-ZB2-000	CONTROL ASSY.	1			
6	16584-883-300	SPRING, CONTROL ADJUSTING ...	1			
7	90013-883-000	BOLT, FLANGE, 6X12(CT200) ...	2			
8	90015-ZE5-010	BOLT, GOVERNOR ARM	1			
9	93500-05035-0A	SCREW, PAN, 5X35	1			
10	94050-06000	NUT, FLANGE, 6MM	1			



EOP-1

GASKET KIT

C15



Z419X0100

Ref. No.	L.O.N.	(Relative ref. Number)	Description	F.R.T.
----------	--------	------------------------	-------------	--------

NO INFORMATION

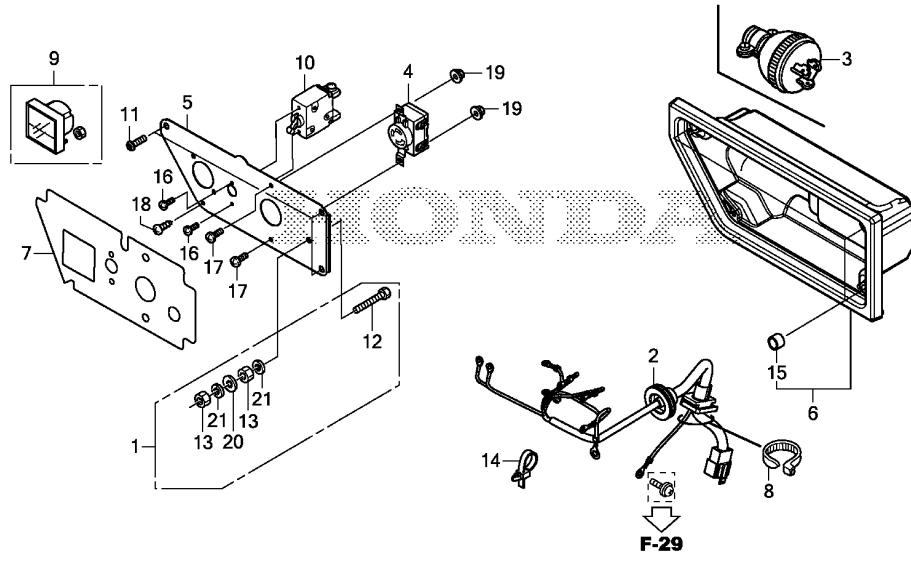
Ref. No.	Part No.	Description	Reqd. QTY	Serial No.	Parts catalogue code
			ER 2500 CX		
1	06111-ZDK-000	GASKET KIT	(1)		

2

F-2

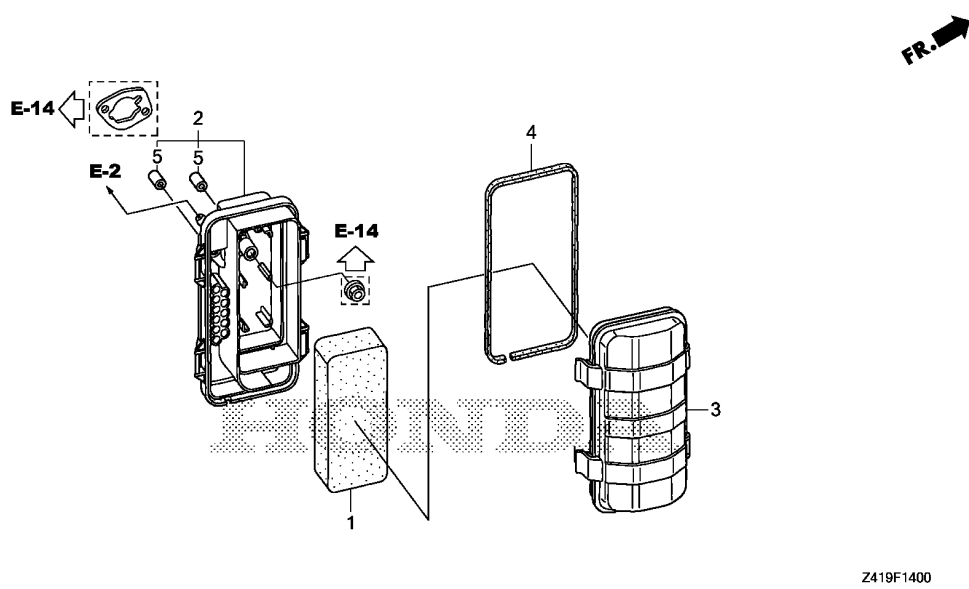
CONTROL PANEL

D 1



Ref. No.	L.O.N.	(Relative ref. Number) Description	F.R.T.
2	6111B9	HARNES, CONTROL WIRE	0.5
4	6221D5	RECEPTACLE/CONSENT, CONTROL PANEL	0.4
5	6221N9	PANEL, GENERATOR CONTROL	0.5
6	4131M5	CASE, CONTROL	0.2
7	6221C5	MARK, CONTROL PANEL	0.5
9	8121B4	METER, VOLT	0.3
10	6131C4	BREAKER, CIRCUIT	0.3

Ref. No.	Part No.	Description	Reqd. QTY	Serial No.	Parts catalogue code
			ER 2500 CX		
1	31428-Z22-A60	TERMINAL SET, EARTH	1		
2	32150-Z41-N60	HARNES ASSY., CONTROL WIRE ..	1		
3	32310-Z15-R60	PLUG ASSY., CONSENT(20A-250V)	1		
4	32330-Z15-R60	RECEPTACLE(20A/250V)	1		
5	32345-Z41-N60	PANEL, CONTROL	1		
6	32356-Z41-N60ZA	CASE, CONTROL PANEL *NH1*.....BLACK	1		
7	32366-Z41-N60	MARK, PANEL(RH)	1		
8	32903-Z22-000	TIE, CABLE(C)	1		
9	37450-Z18-V51	METER ASSY., VOLT	1		
10	38220-Z15-S62	BREAKER, CIRCUIT(10A)	1		
11	90101-Z15-000	SCREW, TRUSS, 6X18	3		
12	90111-Z22-A60	BOLT, HEX., 6X22	1		
13	90112-Z22-000	NUT, HEX., 6MM	2		
14	90672-ZB4-000	TIE, CABLE	1		
15	91551-Z15-000	COLLAR, CONTROL CASE	3		
16	93500-03005-1A	SCREW, PAN, 3X5	2		
17	93500-04010-1A	SCREW, PAN, 4X10	2		
18	93911-24410	SCREW, TAPPING, 4X16	1		
19	94050-04000	NUT, FLANGE, 4MM	2		
20	94101-06000	WASHER, PLAIN, 6MM	1		
21	94111-06000	WASHER, SPRING, 6MM	2		

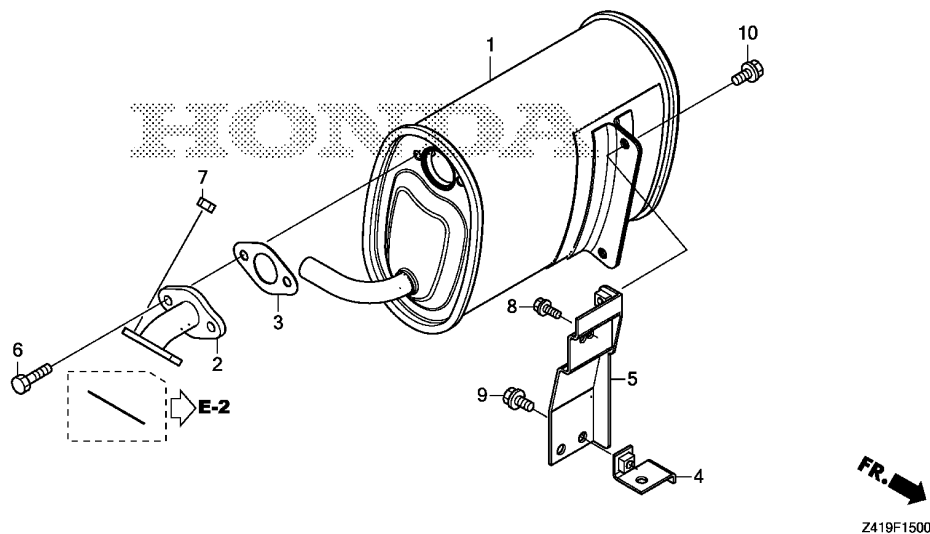


Ref. No.	L.O.N.	(Relative ref. Number) Description	F.R.T.
1	3121B8	ELEMENT, AIR CLEANERINCLUDES: Air cleaner element -inspection	0.1
2	3121A5	CASE, AIR CLEANER	0.1
4	3121E9	SEAL, AIR CLEANER COVER	0.1

Z419F1400

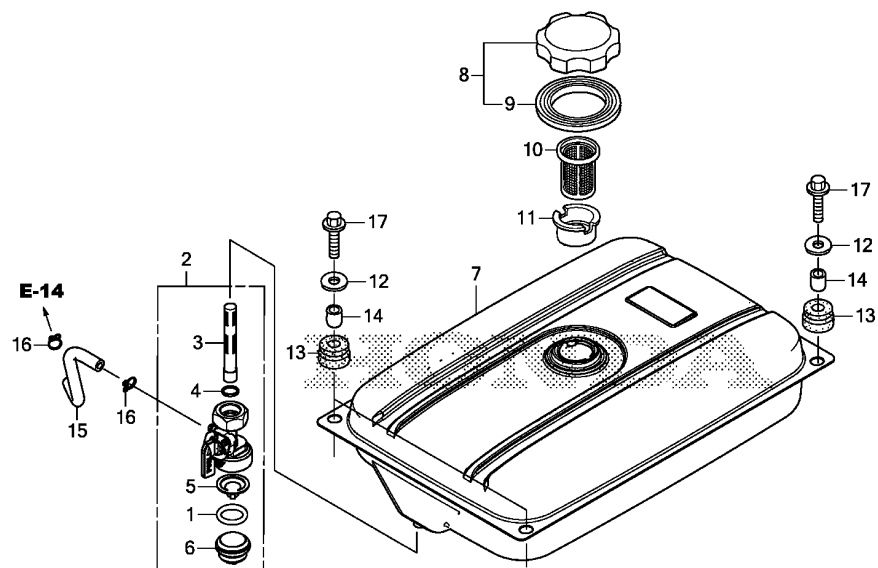
3

Ref. No.	Part No.	Description	Reqd. QTY		Serial No.	Parts catalogue code
			ER	2500 CX		
1	17211-Z15-R60	ELEMENT, AIR CLEANER	1			
2	17220-Z41-N60	CASE COMP., AIR CLEANER	1			
3	17231-Z41-N60	COVER, AIR CLEANER	1			
4	17233-Z15-R60	SEAL, AIR CLEANER COVER	1			
5	91552-Z15-R60	COLLAR, AIR CLEANER	2			



Ref. No.	L.O.N.	(Relative ref. Number) Description	F.R.T.
1	3131C5	MUFFLER, EXHAUST	0.2
2	3131C9	PIPE, EXHAUST	0.2
3	3131B5	GASKET, EXHAUST PIPE	0.2
5	3131E1	STAY, MUFFLER	0.2

Ref. No.	Part No.	Description	Reqd. QTY		Serial No.	Parts catalogue code
			ER	2500 CX		
1	18310-Z41-N61	MUFFLER COMP.	1			
2	18330-ZR4-T60	PIPE COMP., EX.	1			
3	18333-ZB7-800	GASKET, EX. PIPE	1			
4	18337-ZR4-T60	STAY A, MUFFLER	1			
5	18338-ZR4-T60	STAY B, MUFFLER	1			
6	92101-08025-0A	BOLT, HEX., 8X25	2			
7	94001-08000-0S	NUT, HEX., 8MM	2			
8	95701-06012-00	BOLT, FLANGE, 6X12	1			
9	95701-08014-00	BOLT, FLANGE, 8X14	1			
10	95701-08016-00	BOLT, FLANGE, 8X16	2			

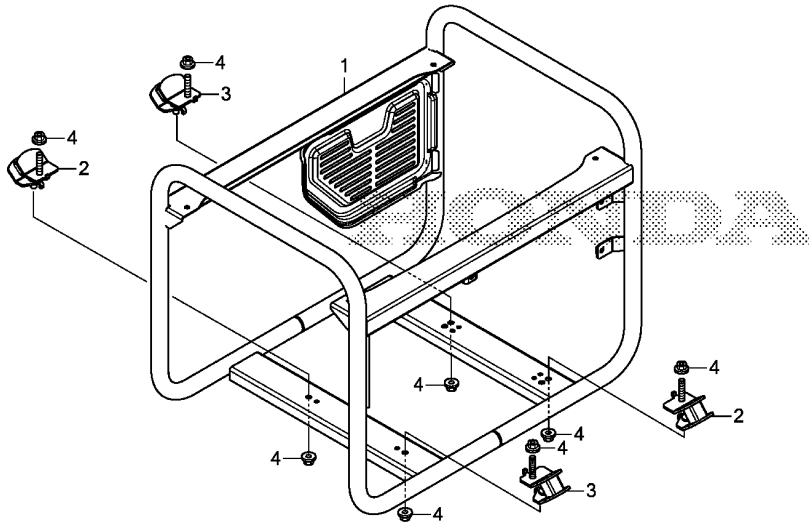


Ref. No.	L.O.N.	(Relative ref. Number) Description	F.R.T.
2	3101A3	COCK, FUEL	0.2
3	(4)		
5	3101D5	SCREEN, FUEL STRAINER	0.2
7	3101A7	FILTER, FUEL TANK CUP	0.2
8	3101H7	TANK, FUEL	0.3
10	3101M7	CAP, FUEL FILLER	0.1
15	3101A6	FILTER, FUEL	0.1
	3101F1	TUBE, FUEL TANK	0.2

FR. →
Z419F1600

3

Ref. No.	Part No.	Description	Reqd. QTY	Serial No.	Parts catalogue code
			ER 2500 CX		
1	16173-Z41-N61	O-RING	1		
2	16950-Z41-N61	COCK ASSY., FUEL	1		
3	16952-Z41-N61	STRAINER, FUEL	1		
4	16957-Z41-N61	SEAL, COCK	1		
5	16959-Z41-N61	FILTER, CUP	1		
6	16967-Z41-N61	CUP, FUEL STRAINER	1		
7	17510-Z41-N60ZA	TANK COMP., FUEL	1		
		R280.....POWER RED	1		
8	17620-Z1T-800	CAP COMP., FUEL FILLER (CHROME PLATED)(TOYOSHA)	1		
9	17631-Z1T-800	PACKING, FUEL FILLER CAP (39X62X3)(TOYOSHA)	1		
10	17670-Z41-N60	FILTER COMP., FUEL	1		
11	17673-893-000	HOLDER, FUEL FILTER	1		
12	90501-Z15-000	WASHER, 6MM	4		
13	90851-898-000	RUBBER, TANK CUSHION	4		
14	91551-898-000	COLLAR, TANK CUSHION	4		
15	95001-45120-40	TUBE, FUEL, 4.5X120 (95001-45001-60M)	1		
16	95002-02080	CLIP, TUBE(B8)	2		
17	95701-06022-07	BOLT, FLANGE, 6X22	4		

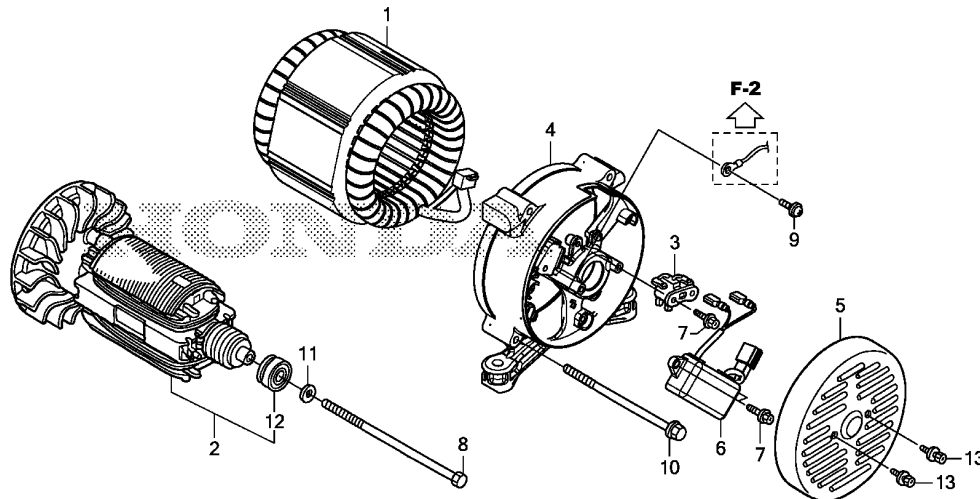


Z419F2500

Ref. No.	L.O.N.	(Relative ref. Number) Description	F.R.T.
1	4101H6	FRAME, MAININCLUDES: Engine removal and installation	0.5
2	4101V0	RUBBER, BOTTOM :LEFT FRONTINCLUDES: Engine removal and installation	0.4
	4101V0A	.Replace bottom rubber all add	0.1
	4101V4	RUBBER, BOTTOM :RIGHT REARINCLUDES: Engine removal and installation	0.4
	4101V4A	.Replace bottom rubber all add	0.1
3	4101V1	RUBBER, BOTTOM :RIGHT FRONT .. .INCLUDES: Engine removal and installation	0.4
	4101V1A	.Replace bottom rubber all add	0.1
	4101V3	RUBBER, BOTTOM :LEFT REARINCLUDES: Engine removal and installation	0.4
	4101V3A	.Replace bottom rubber all add	0.1

Ref. No.	Part No.	Description	Reqd. QTY	Serial No.	Parts catalogue code
			ER 2500 CX		
1	50310-Z41-N60ZA	FRAME COMP. *NH105*...MAT BLACK (#15-#20)	1		
2	68326-Z15-B70	RUBBER, FR. BOTTOM	2		
3	68327-Z15-B70	RUBBER, RR. BOTTOM	2		
4	94050-08000	NUT, FLANGE, 8MM	8		



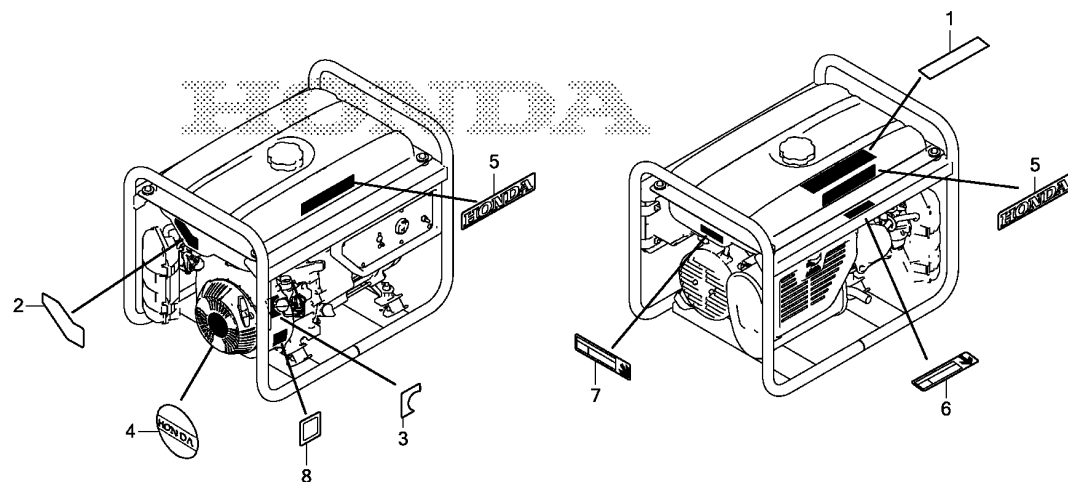


Z419F2900

Ref. No.	L.O.N.	(Relative ref. Number) Description	F.R.T.
1	6201B9	STATOR, GENERATOR	0.9
2	6201A9	ROTOR, GENERATOR	0.9
3	6171B8	BRUSH, GENERATOR	0.2
4	6201B6	HOUSING, GENERATOR :REAR	0.7
6	6201C0	REGULATOR, AUTOMATIC VOLTAGE ..	0.2
12	6201A7	BEARING, GENERATOR ROTOR	0.8

3

Ref. No.	Part No.	Description	Reqd. QTY		Serial No.	Parts catalogue code
			ER	2500		
				CX		
1	31120-Z41-N61	STATOR ASSY.	1			
2	31130-Z41-N61	ROTOR COMP.	1			
3	31155-ZR4-000	BRUSH ASSY.	1			
4	31171-Z41-N61	HOUSING, RR.	1			
5	31186-Z41-N60ZB	COVER, GENERATOR END	1			
		NH105...MAT BLACK (#15-#20)	1			
6	31700-Z41-N62	REGULATOR ASSY., AUTOMATIC	1			
		VOLTAGE	1			
7	90032-875-000	SCREW, TAPPING, 5X14	3			
8	90101-ZD8-K62	BOLT, HEX., 5/16X180	1			
9	90102-Z21-000	SCREW, PAN, 5X12	1			
10	90157-ZR5-000	BOLT, FLANGE, 6X125	4			
11	90410-SD3-660	WASHER, PLAIN, 8MM	1			
12	91051-Z41-N61	BEARING ASSY., 6202	1			
13	93401-05010-07	BOLT-WASHER, 5X10	2			



Z419F3100

Ref. L.O.N. (Relative ref. Number) F.R.T.
No. Description

NO INFORMATION

Ref. No.	Part No.	Description	Reqd. QTY		Serial No.	Parts catalogue code
			ER	2500 CX		
1	87150-Z41-N60	MARK, CAUTION	1			
2	87403-Z41-N60	MARK, OPERATION	1			
3	87501-Z41-N60	MARK, ENGINE SWITCH	1			
4	87531-Z15-000	MARK, HONDA	1			
5	87531-Z41-N60	MARK, HONDA	2			
6	87539-Z41-N60	MARK, EX. CAUTION	1			
7	87540-Z41-N60	MARK, EX. CAUTION	1			
8	87594-Z41-N60	MARK, OIL CHECK	1			

PART NO. INDEX

E 1

Part Number	Address	Page	Ref.	Part Number	Address	Page	Ref.	Part Number	Address	Page	Ref.	Part Number	Address	Page	Ref.	Part Number	Address	Page	Ref.		
06000				16000				19000				36000				90601-Z1T-003	C10	25	8		
06111-ZDK-000	C15	30	1	16010-ZB1-015	C11	26	1	19511-Z1T-000	C12	27	1	36100-ZF6-P82	C10	25	5	90601-ZE1-000	C2	17	10		
11000				16011-ZE0-005	C11	26	2	19610-ZDK-000ZA	C10	25	1	37000				90602-ZE1-000	C2	17	11		
11300-ZDK-D10	C3	18	1	16013-Z0S-B01	C11	26	3	19611-ZH8-810	C10	25	2					90672-ZB4-000	D1	31	14		
12000				16015-ZE0-831	C11	26	4	19631-ZDK-000	C10	25	3					90851-898-000	D4	34	13		
12000-ZDK-407	C2	17	1	16016-ZH7-W01	C11	26	5	28000				37450-Z18-V51	D1	31	9	91000					
12209-ZH8-003	C6	21	1	16024-ZE1-811	C11	26	6	28400-ZDL-003	C9	24	1					91001-Z1T-003	C2	17	12		
12210-Z1T-405	C1	16	1	16028-ZE0-005	C11	26	7	28405-ZDL-003	C9	24	2					91001-ZF1-003	C2	17	12		
12251-ZL0-003	C1	16	2	16044-ZE0-005	C11	26	8	28414-ZDK-003	C9	24	3					91001-ZF1-004	C2	17	12		
12310-ZE1-020	C1	16	3	16100-Z1T-D41	C11	26	9	28417-ZDL-003	C9	24	4					91051-Z41-N61	D6	36	12		
12312-Z1T-701	C1	16	4	16124-ZE0-005	C11	26	10	28421-ZDK-003	C9	24	5					91202-Z1T-003	C2	17	13		
13000				16166-ZH8-E80	C11	26	11	28422-ZDK-003	C9	24	6						C3	18	4		
13010-Z4K-004	C5	20	1	16173-Z41-N61	D4	34	1	28433-ZDK-003	C9	24	7					91353-Z7E-003	C2	17	14		
13010-Z4P-003	C5	20	1	16211-Z1T-000	C11	26	12	28441-ZDK-003	C9	24	8					91551-898-000	D4	34	14		
13011-Z4K-004	C5	20	1	16212-Z1T-701	C11	26	13	28442-ZDK-003	C9	24	9					91551-Z15-000	D1	31	15		
13011-Z4P-003	C5	20	1	16220-ZE1-020	C11	26	14	28443-ZDK-003	C9	24	10					91552-Z15-R60	D2	32	5		
13012-Z4K-004	C5	20	1	16221-Z1T-701	C11	26	15	28451-ZDL-003	C12	27	2					92000					
13012-Z4P-003	C5	20	1	16510-Z1T-000	C2	17	2	28461-ZDK-003	C9	24	11					92101-08025-0A	D3	33	6		
13013-Z4K-004	C5	20	1	16511-ZE1-000	C2	17	3	28462-ZDK-003	C9	24	12					93000					
13013-Z4P-003	C5	20	1	16513-ZE1-000	C2	17	4	30000				87150-Z41-N60	D7	37	1						
13101-Z1T-010	C5	20	2	16531-Z1T-000	C2	17	5	30500-ZDK-004	C13	28	1	87403-Z41-N60	D7	37	2						
13102-Z1T-000	C5	20	2	16541-Z1T-000	C2	17	6	30700-ZDK-004	C13	28	2	87501-Z41-N60	D7	37	3						
13103-Z1T-000	C5	20	2	16551-ZE0-010	C14	29	1	31000				87531-Z15-000	D7	37	4						
13104-Z1T-000	C5	20	2	16555-ZE1-000	C14	29	2	31110-Z1T-004	C12	27	3	87531-Z41-N60	D7	37	5						
13111-Z1T-000	C5	20	3	16561-Z1T-D00	C14	29	3	31120-Z41-N61	D6	36	1	87539-Z41-N60	D7	37	6						
13200-Z1T-600	C5	20	4	16562-ZE1-020	C14	29	4	31130-Z41-N61	D6	36	2	87540-Z41-N60	D7	37	7						
13310-Z1T-F00	C4	19	1	16570-ZB2-000	C14	29	5	31155-ZR4-000	D6	36	3	87594-Z41-N60	D7	37	8						
13331-357-000	C4	19	2	16584-883-300	C14	29	6	31171-Z41-N61	D6	36	4	90000				94001-08000-0S	D3	33	7		
14000				16610-ZB2-000	C11	26	16	31186-Z41-N60ZB	D6	36	5	90001-Z1T-000	C5	20	5	94050-04000	D1	31	19		
14100-Z1T-810	C6	21	2	16950-Z41-N61	D4	34	2	31428-Z22-A60	D1	31	1	90003-ZDK-003	C9	24	13	94050-06000	C14	29	10		
14410-ZE1-010	C6	21	3	16952-Z41-N61	D4	34	3	31700-Z41-N62	D6	36	6	90012-ZE0-010	C6	21	15	94050-06080	C11	26	17		
14431-ZE1-000	C6	21	4	16957-Z41-N61	D4	34	4	32000				90013-883-000	C1	16	7	94050-08000	D5	35	4		
14441-ZE1-010	C6	21	5	16959-Z41-N61	D4	34	5	32150-Z41-N60	D1	31	2					94050-10000	C2	17	15		
14451-Z7E-000	C6	21	6	16967-Z41-N61	D4	34	6	32195-ZDK-004	C13	28	3					94101-06000	D1	31	20		
14568-ZE1-000	C6	21	7	17000				32310-Z15-R60	D1	31	3					94101-06800	C2	17	16		
14711-ZF1-000	C6	21	8	17211-Z15-R60	D2	32	1	32330-Z15-R60	D1	31	4					94111-06000	D1	31	21		
14721-ZF1-000	C6	21	9	17220-Z41-N60	D2	32	2	32345-Z41-N60	D1	31	5					94251-08000	C2	17	17		
14751-ZF1-000	C6	21	10	17231-Z41-N60	D2	32	3	32356-Z41-N60ZA	D1	31	6					94301-08140	C3	18	5		
14771-ZE1-000	C6	21	11	17233-Z15-R60	D2	32	4	32366-Z41-N60	D1	31	7					94301-10160	C1	16	10		
14773-ZE1-000	C6	21	12	17510-Z41-N60ZA	D4	34	7	32903-Z22-000	D1	31	8					94305-20122	C11	26	18		
14781-ZE1-000	C6	21	13	17620-Z1T-800	D4	34	8	34000				95000									
14791-ZE1-010	C6	21	14	17631-Z1T-800	D4	34	9	18310-Z41-N61	D3	33	1					95001-45120-40	D4	34	15		
15000				17670-Z41-N60	D4	34	10	18330-ZR4-T60	D3	33	2					95002-02080	D4	34	16		
15600-Z1T-000	C3	18	2	17673-893-000	D4	34	11	18333-ZB7-800	D3	33	3					95701-06008-00	C10	25	9		
15625-Z1T-000	C3	18	3	18000				18337-ZR4-T60	D3	33	4					95701-06012-00	C2	17	18		
15721-Z1T-D40	C1	16	5	18310-Z41-N61	D3	33	1	18338-ZR4-T60	D3	33	5						D3	33	8		
16000				18330-ZR4-T60	D3	33	2	18338-ZR4-T60	D3	33	5					95701-06022-07	D4	34	17		
17000				18333-ZB7-800	D3	33	3	18381-Z1T-701	C1	16	6					95701-06025-00	C9	24	14		
18000				18337-ZR4-T60	D3	33	4	34000				90201-Z1T-000	C12	27	4						
19000				18338-ZR4-T60	D3	33	5	34150-ZH7-023	C10	25	4					90206-ZE1-000	C6	21	16		
30000				18381-Z1T-701	C1	16	6	35000				90410-SD3-660	D6	36	11						
31000				34000				35000				90451-Z1T-000	C2	17	9						
32000				34000				35000				90501-Z15-000	D4	34	12						
33000				34000				35000				90551-ZE1-000	C5	20	6						
34000				34000				35000								95701-08014-00	D3	33	9		
35000				34000				35000								95701-08016-00	D3	33	10		
36000				34000				35000								95701-08032-00	C3	18	6		

4

PART NO. INDEX

E 2

Part Number	Address	Page	Ref.	Part Number	Address	Page	Ref.	Part Number	Address	Page	Ref.	Part Number	Address	Page	Ref.
95701-08060-00	C1	16	11												
96000															
96100-62050-00	C3	18	7												
98000															
98079-55846	C1	16	12												
98079-55855	C1	16	12												
98079-56846	C1	16	12												
98079-56855	C1	16	12												
99000															
99101-ZH8-0680	C11	26	19												
99101-ZH8-0700	C11	26	19												
99101-ZH8-0720	C11	26	19												
99204-ZE0-0350	C11	26	20												

PART NAME INDEX

F 1

Part name	Address	Page	Ref.	Part name	Address	Page	Ref.	Part name	Address	Page	Ref.
[A]								[K]			
ALERT UNIT, OIL	C10	25	4	COLLAR, AIR CLEANER	D2	32	5	KEY, SPECIAL WOODRUFF, 25X18..	C4	19	2
ARM, GOVERNOR	C14	29	1	COLLAR, CONTROL CASE	D1	31	15	KNOB, RECOIL STARTER.....	C9	24	11
ARM, VALVE ROCKER	C6	21	4	COLLAR, RECOIL STARTER	C9	24	4				
[B]								[L]			
BARREL ASSY., CYLINDER	C2	17	1	COLLAR, TANK CUSHION	D4	34	14	LEVER COMP., CHOKE.....	C11	26	16
BEARING ASSY., 6202	D6	36	12	CONTROL ASSY.	C14	29	5	LIFTER, VALVE.....	C6	21	5
BEARING, RADIAL BALL	C2	17	12	CORD, STOP SWITCH.....	C13	28	3				
BEARING, RADIAL BALL, 6205 ...	C2	17	12	COVER ASSY., CRANKCASE	C3	18	1				
	C3	18	7	COVER COMP., FAN.....	C10	25	1				
BOLT-WASHER, 5X10	D6	36	13	COVER COMP., HEAD.....	C1	16	3				
BOLT, CONNECTING ROD	C5	20	5	COVER, AIR CLEANER	D2	32	3				
BOLT, DRAIN PLUG	C2	17	8	COVER, GENERATOR END	D6	36	5				
BOLT, FLANGE, 6X12	C1	16	7	CRANKSHAFT COMP.	C4	19	1				
	C2	17	18	CUP, FUEL STRAINER	D4	34	6				
	C10	25	6	[D]							
	C14	29	7	DOWEL PIN, 10X16	C1	16	10				
	D3	33	8	DOWEL PIN, 8X14	C3	18	5				
BOLT, FLANGE, 6X125	D6	36	10	[E]							
BOLT, FLANGE, 6X20	C10	25	7	ELEMENT, AIR CLEANER	D2	32	1				
BOLT, FLANGE, 6X22	D4	34	17	[F]							
BOLT, FLANGE, 6X25	C9	24	14	FAN, COOLING	C12	27	1				
	C13	28	4	FILTER COMP., FUEL	D4	34	10				
BOLT, FLANGE, 6X8	C10	25	9	FILTER, CUP	D4	34	5				
BOLT, FLANGE, 8X14	D3	33	9	FLOAT SET	C11	26	3				
BOLT, FLANGE, 8X16	D3	33	10	FLYWHEEL COMP.	C12	27	3				
BOLT, FLANGE, 8X32	C3	18	6	FRAME COMP.	D5	35	1				
BOLT, FLANGE, 8X60	C1	16	11	[G]							
BOLT, GOVERNOR ARM	C14	29	8	GASKET KIT	C15	30	1				
BOLT, HEX., 5/16X180	D6	36	8	GASKET SET	C11	26	1				
BOLT, HEX., 6X22	D1	31	12	GASKET, CYLINDER HEAD	C1	16	2				
BOLT, HEX., 8X25	D3	33	6	GASKET, EX. PIPE	D3	33	3				
BOLT, PIVOT, 8MM	C6	21	15	GASKET, MUFFLER	C1	16	6				
BOLT, STUD, 6X103.5	C1	16	8	GOVERNOR ASSY.	C2	17	2				
BOLT, STUD, 8X32	C1	16	9	GUIDE, RATCHET	C9	24	7				
BREAKER, CIRCUIT	D1	31	10	[H]							
BRUSH ASSY.	D6	36	3	HARNES ASSY., CONTROL WIRE ...	D1	31	2				
[C]								[O]			
CAMSHAFT ASSY.	C6	21	2	HEAD COMP., CYLINDER	C1	16	1	OIL SEAL, 25X41X6.....	C2	17	13
CAP ASSY., NOISE SUPPRESSOR ..	C13	28	2	HOLDER, FUEL FILTER	D4	34	11		C3	18	4
CAP ASSY., OIL FILLER	C3	18	2	HOUSING, RR.	D6	36	4	O-RING	D4	34	1
CAP COMP., FUEL FILLER	D4	34	8	[I]							
CARBURETOR ASSY.	C11	26	9	INSULATOR, CARBURETOR	C11	26	12	O-RING, 14MM.....	C2	17	14
CASE COMP., AIR CLEANER	D2	32	2	[J]							
CASE, CONTROL PANEL	D1	31	6	JET SET, PILOT, #35	C11	26	20				
CASE, RECOIL STARTER	C9	24	3	JET, MAIN, #68	C11	26	19				
CHAMBER SET, FLOAT	C11	26	4	JET, MAIN, #70	C11	26	19				
CHOKE SET	C11	26	8	JET, MAIN, #72	C11	26	19				
CLIP, GOVERNOR HOLDER	C2	17	11	[P]							
CLIP, HARNESS	C10	25	8	PACKING, CARBURETOR	C11	26	15				
CLIP, PISTON PIN, 18MM	C5	20	6	PACKING, FUEL FILLER CAP.....	D4	34	9				
CLIP, TUBE	D4	34	16	PACKING, HEAD COVER.....	C1	16	4				
COCK ASSY., FUEL	D4	34	2	PACKING, INSULATOR	C11	26	13				
COIL ASSY., IGNITION	C13	28	1	PACKING, OIL FILLER CAP.....	C3	18	3				
				PANEL, CONTROL	D1	31	5				
				PIN, GOVERNOR WEIGHT.....	C2	17	4				
				PIN, LOCK, 8MM	C2	17	17				
				PIN, PISTON	C5	20	3				
				PIN, SPRING, 2X12	C11	26	18				
				PIPE COMP., EX.	D3	33	2				
				PISTON	C5	20	2				
				PIVOT, ROCKER ARM.....	C6	21	6				

PART NAME INDEX

F 2

Part name	Address	Page	Ref.	Part name	Address	Page	Ref.	Part name	Address	Page	Ref.
PLATE COMP., SIDE	C10	25	2	STAY A, MUFFLER	D3	33	4				
PLATE, PUSH ROD GUIDE	C6	21	14	STAY B, MUFFLER	D3	33	5				
PLUG ASSY., CONSENT	D1	31	3	STRAINER, FUEL	D4	34	3				
PLUG, SPARK	C1	16	12	SWITCH ASSY., ENGINE STOP	C10	25	5				
PULLEY, STARTER	C12	27	2	SWITCH ASSY., OIL LEVEL	C2	17	7				
[R]											
RATCHET, STARTER	C9	24	6	TANK COMP., FUEL	D4	34	7				
RECEPTACLE	D1	31	4	TERMINAL SET, EARTH	D1	31	1				
REEL, RECOIL STARTER	C9	24	5	TIE, CABLE	D1	31	8				
REGULATOR ASSY., AUTOMATIC							14				
VOLTAGE	D6	36	6	TUBE, BREATHER	C1	16	5				
RETAINER, EX. VALVE SPRING ...	C6	21	12	TUBE, FUEL, 4.5X120	D4	34	15				
RETAINER, IN. VALVE SPRING ...	C6	21	11								
RING SET, PISTON	C5	20	1	[V]							
ROD ASSY., CONNECTING	C5	20	4	VALVE SET, FLOAT	C11	26	2				
ROD, GOVERNOR	C14	29	2	VALVE, EX.	C6	21	9				
ROD, PUSH	C6	21	3	VALVE, IN.	C6	21	8				
ROPE, RECOIL STARTER	C9	24	12								
ROTATOR, VALVE	C6	21	13	[W]							
ROTOR COMP.	D6	36	2	WASHER, 6MM	D4	34	12				
RUBBER, FR. BOTTOM	D5	35	2	WASHER, DRAIN PLUG, 10.2MM ...	C2	17	10				
RUBBER, RR. BOTTOM	D5	35	3	WASHER, PLAIN, 6MM	C2	17	16				
RUBBER, TANK CUSHION	D4	34	13		D1	31	20				
[S]				WASHER, PLAIN, 8MM	D6	36	11				
SCREW SET	C11	26	7	WASHER, SPRING, 6MM	D1	31	21				
SCREW SET, DRAIN	C11	26	6	WASHER, THRUST, 6MM	C2	17	9				
SCREW SET, PILOT	C11	26	5	WEIGHT, GOVERNOR	C2	17	3				
SCREW, PAN, 3X5	D1	31	16								
SCREW, PAN, 4X10	D1	31	17								
SCREW, PAN, 5X12	D6	36	9								
SCREW, PAN, 5X35	C14	29	9								
SCREW, SETTING	C9	24	13								
SCREW, TAPPING, 4X16	D1	31	18								
SCREW, TAPPING, 5X14	D6	36	7								
SCREW, THROTTLE STOP	C11	26	10								
SCREW, TRUSS, 6X18	D1	31	11								
SEAL, AIR CLEANER COVER	D2	32	4								
SEAL, COCK	D4	34	4								
SEAL, VALVE STEM	C6	21	1								
SHAFT, GOVERNOR ARM	C2	17	6								
SHROUD	C10	25	3								
SLIDER, GOVERNOR	C2	17	5								
SPACER COMP., CARBURETOR	C11	26	14								
SPACER, RECOIL STARTER											
MOUNTING	C9	24	2								
SPRING, CONTROL ADJUSTING ...	C14	29	6								
SPRING, FRICTION	C9	24	8								
SPRING, GOVERNOR	C14	29	3								
SPRING, RECOIL STARTER	C9	24	9								
SPRING, RETURN	C9	24	10								
SPRING, THROTTLE RETURN	C14	29	4								
SPRING, VALVE	C6	21	10								
SPRING, WEIGHT RETURN	C6	21	7								
STARTER ASSY., RECOIL	C9	24	1								
STATOR ASSY.	D6	36	1								

1

FOREWORD INDEX

2

ENGINE GROUP

3

FRAME GROUP

4

PART NUMBER INDEX

5

PART NAME INDEX

HONDA
The Power of Dreams