

# ***GENERATOR***

EU20iT1

**PARTS CATALOGUE**

**1**

---

**FOREWORD INDEX**

**1**

---

**ENGINE GROUP**

**2**

---

**FRAME GROUP**

**3**

---

**PART NUMBER INDEX**

**4**

---

**PART NAME INDEX**

**5**

---



**Instruction for use of parts catalogue**

- **This parts catalogue was prepared based on the latest information available as of June 10, 2013.**
- See the parts catalogue news for any revision that is made after June 10, 2013.
- **Always specify the part number when ordering a part.**
  - Check the model, type, serial numbers, color, maker, and the size as needed before ordering a part.
  - Note that the illustrations (part drawings) can differ from the actual parts in shape. They are given just to help you to refer to the parts.
- **When modifications or additions to this parts catalogue are made, a revised edition will be issued at an appropriate time, with successively progressing revision numbers on the cover. We recommend obtaining such revisions in order to keep your parts catalogue up-to-date at all times. To check whether a parts catalogue revision has been issued, please contact your Honda distributor.**

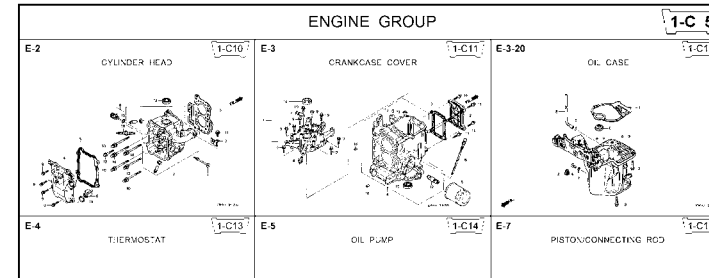
Initial version issue date June 10, 2013  
**Honda Motor Co., Ltd.**

**CONTENTS**

	Page	Address No.	
● Instruction for use of parts catalogue .....	1	B 1	<b>1</b>
● How to refer to the part information .....	2	B 2	
● Part catalogue structure .....	3	B 3	
● When the parts were revised.....	4	B 4	
● Abbreviations used in the parts catalogue.....	4	B 4	
● How to check the part block and serial numbers.....	5	B 5	
● Models, parts catalogue codes and applicable serial numbers .....	6	B 6	
● Features of each type.....	8	B 8	
● Fuel hose, general purpose hoses and vinyl hose.....	9	B 9	
● FLAT RATE SERVICE TIME .....	10	B10	
● Illustrated index .....	15	B15	
● ENGINE GROUP.....	19	D 1	<b>2</b>
● FRAME GROUP.....	27	E 1	<b>3</b>
● PART NO. INDEX.....	56	G 1	<b>4</b>
● PART NAME INDEX.....	58	H 1	<b>5</b>

How to refer to the part information

A Reference with "Illustrated index"



B Reference with "Part number index"

PART NO. INDEX					
Part Number	Address	Page	Ref.	Part Number	Address Page
06000				15212-ZW9-000	1-C14 3C
06316-ZW9-000	1-69	88	1	15220-ZW9-003	1-C14 3C
11000				15332-ZW9-000	1-E8 55
11300-ZW9-405	1-C11	27	1	15332-ZW9-A30	1-E11 5E
11300-ZW9-406	1-C11	27	1	15400-PFB-004	1-C11 27
11340-ZW9-000	1-C11	27	2	15422-ZW9-000	1-C14 3C
11342-ZW9-000	1-C11	27	3	15473-881-000	1-C14 3C
11381-ZW9-003	1-C12	28	1	15474-ZW9-000	1-C14 3C
				15611-921-000	1-C10 2E
				15655-ZW9-000	1-C11 27
				16000	
12000				16010-ZV4-005	1-D4 3E
12000-ZW9-405ZA	1-C11	27	4	16011-ZV4-005	1-D4 3E
12155-ZV4-A00	1-C13	29	1	16013-ZW9-003	1-D4 3E
12166-ZW9-000	1-C10	26	1	16016-ZW9-003	1-D4 3E
12209-GB4-681	1-C16	32	1	16016-ZW9-721	1-D4 3E
12210-ZW9-405ZA	1-C10	26	2	16023-ZW9-003	1-D4 3E
12216-ZE2-300	1-E8	55	1	16024-ZV4-650	1-D4 3E
	1-E11	58	1	16028-ZV4-650	1-D4 3E

C Reference with "Part name index"

PART NAME INDEX					
Part name	Address	Page	Ref.		
[ A ]				BOLT,	
ABSORBER , FUEL	1-E15	62	5	BOLT,	
ARMATURE COMP.	1-D11	43	7	BOLT,	
ARM COMP. , LINK JOINT	1-G6	85	18	BOLT,	
ARM COMP. , SHIFT LINK	1-G6	85	14	BOLT,	
ARM COMP. , TILT	1-F15	79	20		
ARM , FUEL PUMP ROCKER	1-C16	32	4		
ARM , REVERSE LOCK	1-F15	79	18		
ARM , SHIFT LINK	1-F11	74	7		
ARM , STOPPER	1-D1	33	12	BOLT,	
ARM , THROTTLE REMOTE	1-F11	74	6		
ARM , VALVE ROCKER	1-C16	32	3		
[ B ]					
BAG , TOOL , 160MM	1-G5	84	10		
BAND	1-G6	86	37		
BAND B1 , WIRE	1-F6	69	1		
BAND , CORD	1-F3	67	18	BOLT,	
BAND , TUBE CLIP , 11MM	1-E15	63	20		
BAND , TUBE CLIP , 12.5MM	1-E15	63	19	BOLT,	

Block No.

Address No.

**E-2 CYLINDER HEAD** 1-C10

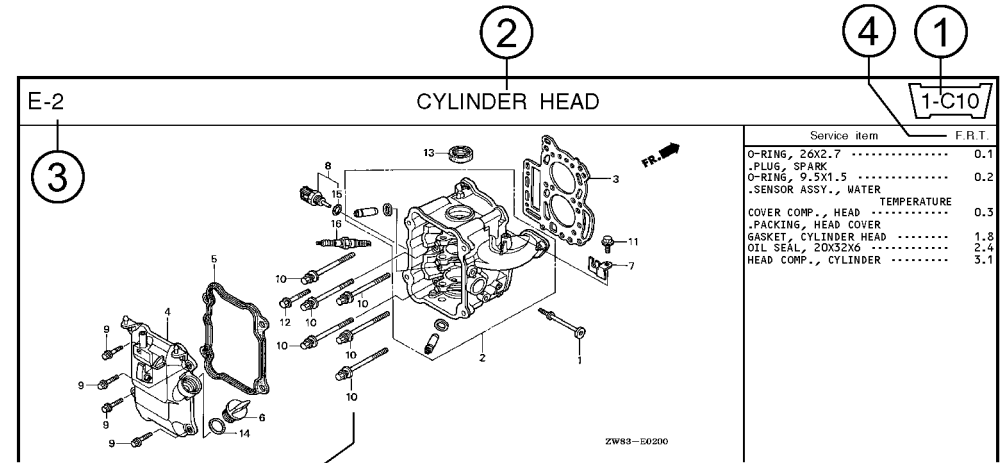
ZW83-50200

Ref. No.	Part No.	Description	Reqd. QTY						Serial No.	Parts catalogue code
			99D1	99D1	1001	1001	1001	1001		
1	12166-ZW9-000	STOPPER, ENGINE SIDE	2	2	2	2	2			
2	12210-ZW9-000ZA	HEAD COMP., CYLINDER	1	1	1	1	1			
3	12251-ZW9-003	GASKET, CYLINDER HEAD	1	1	1	1	1			
4	12310-ZW9-000	COVER COMP., HEAD	1	1	1	1	1			
5	12312-ZW9-000	PACKING, HEAD COVER	1	1	1	1	1			
6	15611-921-000	CAP, OIL (NO GAUGE)	1	1	1	1	1			
7	16617-ZW9-000	HOLDER, CABLE	1	1	1	1	1		SC,SG	
	16617-ZW9-010		1	1	1	1	1	1001801	1001800 LHC,LHD	
			1	1	1	1	1		LHC,LHD	
8	35673-ZV5-003	SENSOR ASSY., WATER	1	1	1	1	1			
9	90003-ZW9-000	BOLT, FLANGE, 6X22	4	4	4	4	4			
10	90007-ZW9-003	BOLT, FLANGE, 8X83	6	6	6	6	6			
11	90011-ZW9-000	BOLT, FLANGE, 6X14(CT200)	1	1	1	1	1			
12	90020-ZW9-000	BOLT, FLANGE, 8X40	2	2	2	2	2			
13	91202-KJ9-003	OIL SEAL, 20X32X6	1	1	1	1	1			
14	91301-805-000	O-RING, 26X2.7	1	1	1	1	1			
15	91307-PK2-005	O-RING, 9.5X1.5(HONDA KIKAKI)	1	1	1	1	1			
16	98059-55916	PLUG, SPARK (CR5EH-9)	2	2	2	2	2			
	98059-55926	PLUG, SPARK (U16FER9)	2	2	2	2	2			

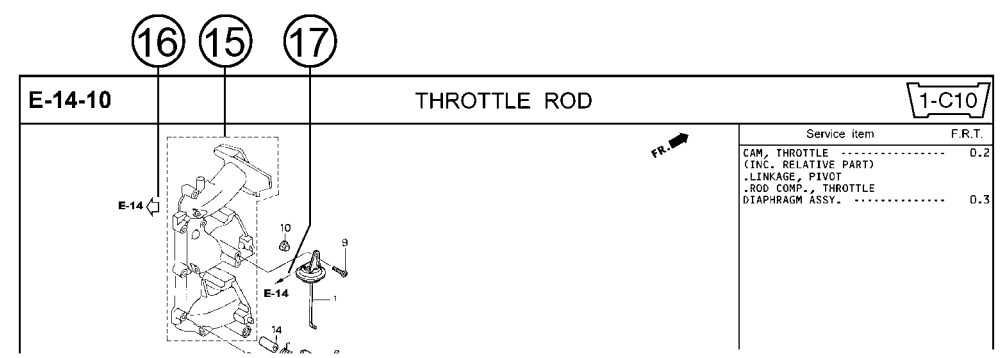
Page No.

2000.09.20 E

Part catalogue structure



Ref. No.	Part No.	Description	Reqd. QTY						Serial No.	Parts catalogue code
			BF 9/9D1	BFP 9/9D1	BF 10D1	BFP 10D1	BF 10B1	BFP 10B1		
1	12166-ZW9-000	STOPPER, ENGINE SIDE	2	2	2	2	2	2		
2	12210-ZW9-000ZA	HEAD COMP., CYLINDER *NHS* ..... DARK GRAY	1	1	1	1	1	1		
3	12251-ZW9-003	GASKET, CYLINDER HEAD	1	1	1	1	1	1		
4	12310-ZW9-000	COVER COMP., HEAD	1	1	1	1	1	1		
5	12312-ZW9-000	PACKING, HEAD COVER	1	1	1	1	1	1		
6	15611-921-000	CAP, OIL (NO GAUGE)	1	1	1	1	1	1		
7	16617-ZW9-000	HOLDER, CABLE	1	1	1	1	1	1	SC,SG	
	16617-ZW9-010		1	1	1	1	1	1	1001800 LHC,LHD	



① Address number

- Address No. is provided (in place of the page No.) to help you refer to the part with the part No. or part name.

② Block title ③ Block number

④ Service item/Flat rate time

⑤ Reference number

- Title number marked with the parenthesis or parentheses indicates that it continues from the previous page.

⑥ Part number ⑦ Honda color code

⑧ Description

⑨ Assemblies

- Sections framed with broken lines in the exploded view drawings are available as complete assemblies. (Their individual parts can also be obtained.)

⑩ Color description

⑪ Note

- Notes are shown with the parentheses in the part name column.

⑫ Required quantity

- Required QTY shown in the parenthesis or parentheses indicates the optional part.
- Required QTY marked with "N" Indicates the optional part that should be selected as needed.
- Required QTY indicates the number of the part used in the block.

⑬ Serial number

⑭ Type

- When the type column is blank, it indicates that the part is applicable to all types.
- As the type of the actual unit may differ from the "parts catalogue, type" please refer to "Models, types and applicable serial numbers" for confirmation.

⑮

- Parts enclosed within a dotted line are covered in a different block.

⑯

- A hollow arrow indicates the block No. for the parts enclosed within a dotted line .

⑰

- A solid arrow indicates the block No. the part in question is connected to.

When the parts were revised

Abbreviations used in the parts catalogue

1



Be sure to check the serial number!!



Ref. No.	Part No.	Description	Reqd. QTY						Serial No.
			BF 9.9D1	BFP 9.9D1	BF 10D1	BFP 10D1	BF 10B1	BFP 10B1	
1	12166-ZW9-000	STOPPER, ENGINE SIDE	2	2	2	2	2	2	
2	12210-ZW9-000ZA	HEAD COMP., CYLINDER *NH8*	1	1	1	1	1	1	
3	12251-ZW9-003	GASKET, CYLINDER HEAD	1	1	1	1	1	1	
4	12310-ZW9-000	COVER COMP., HEAD	1	1	1	1	1	1	
5	12312-ZW9-000	PACKING, HEAD COVER	1	1	1	1	1	1	
6	15611-921-000	CAP, OIL (NO GAUGE)	1	1	1	1	1	1	
7	16617-ZW9-000	HOLDER, CABLE (###)	1	1	1	1	1	1	
	16617-ZW9-010		1	1	1	1	1	1	



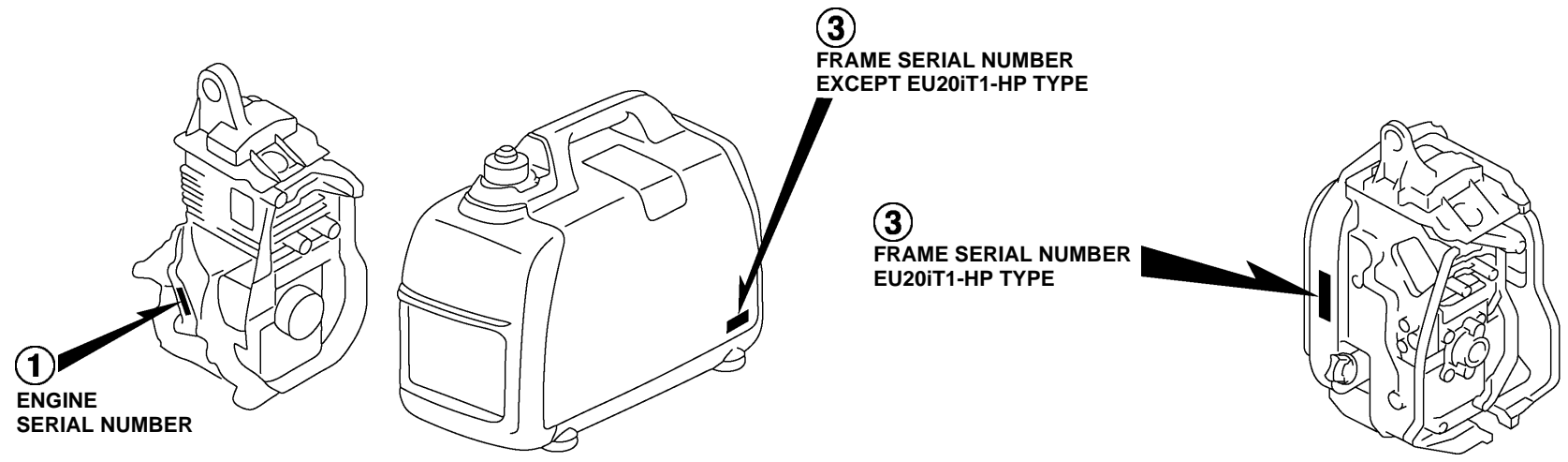
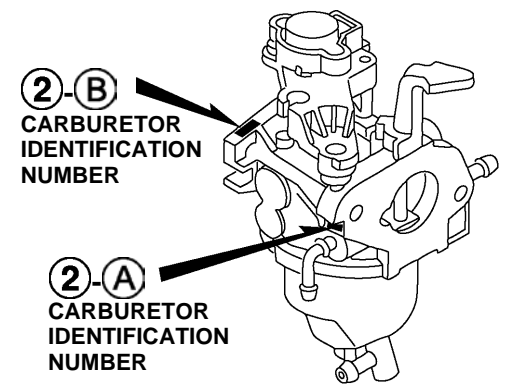
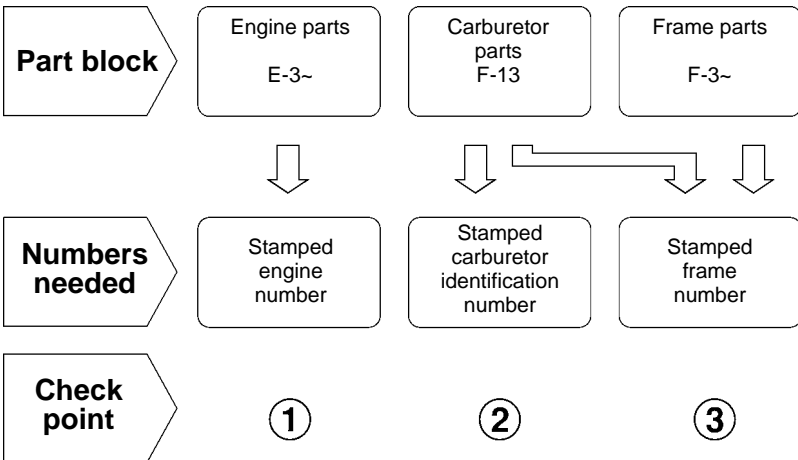
The number has been used from the initial model without revision. When shown at the left side, it is applicable to the models of No.1001801 and the subsequent numbers. When shown at the right side, it is applicable to the models up to No.1001800.

• The parts listed with "###" at the end of the parts name have limited supply period (parts not for sale).

• The following abbreviations are used in the parts name column.

- A ..... Ampere
- A.C. .... Alternating current
- ASSY. .... Assembly
- AT. .... Automatic transmission
- C.D.I. .... Capacitive discharge ignition
- COMP. ... Complete
- D.C. .... Direct current
- EX. .... Exhaust
- G.F.C.I ... Ground fault circuit interruptor
- HEX. .... Hexagonal
- H.S.T. .... Hydrostatic transmission
- FR. ....Front
- IN. ....Inlet
- L (100L) .Link (100 Links)
- L. ....Left
- MM .....Millimeter
- MT. ....Manual Transmission
- P.T.O. ....Power take off
- R. ....Right
- RR. ....Rear
- STD. ....Standard
- T (22T) ...Tooth (22 Teeth)
- V .....Volt
- W .....Watt

How to check the part block and serial numbers



### Models, parts catalogue codes and applicable serial numbers

1

- Models, parts catalogue codes and applicable serial Nos. given in this parts catalogue can be identified as follows.

Model	Type	Parts catalogue type	Engine		Applicable engine serial No.	Applicable frame serial No.	Applicable carburetor identification No.
			Model	Type			
EU20iT1	B	B	GX100T	EY9	GCCBT-1000001~	EACT-1000001~	BF30E D/E
	CL	CL					
	F	F					
	GG2	GG2					
	GG3	GG3					
	GW11	GW11					
	GW12	GW12					
	HP	HP	EY8	EACT-1000001~			
	L	L					
	LB	LB					
	LT	LT					
	RG	RG					

Model	Type	Parts catalogue type	Engine		Applicable engine serial No.	Applicable frame serial No.	Applicable carburetor identification No.
			Model	Type			
EU20iT1	RHH6	RHH6	GX100T	EY7	GCCBT-1000001~	EACT-1000001~	BF30E D/E
	RHH7	RHH7					
	RR4	RR4					
	RR5	RR5					
	RR6	RR6					
	RR7	RR7					
	SB	SB		EY8			
	SK3	SK3					
	SS5	SS5					
	SS6	SS6					
	U	U					
	W	W		EY9			

\* Of carburetor identification numbers, only the portions underlined in the example below are used for registration.

BF 30E D KC ナ  
 (A) (B)

Features of each type

1

- See the following table for the features of each type. (Items in brackets are optional)

Specifications		Model	EU20iT1											
		Type	B	CL	F	GG2	GG3	GW11	GW12	HP	L	LB	LT	RG
Voltage	120V										●	●	●	
	220V													
	230V	●	●	●	●	●	●	●						●
	240V													
Frequency	50Hz	●	●	●	●	●	●	●						●
	60Hz									●	●	●		

Specifications		Model	EU20iT1											
		Type	RHH6	RHH7	RR4	RR5	RR6	RR7	SB	SK3	SS5	SS6	U	W
Voltage	120V													
	220V			●	●	●	●	●	●	●	●			
	230V	●	●											●
	240V												●	
Frequency	50Hz	●	●	●	●	●	●						●	●
	60Hz							●	●	●	●			

## Fuel hose, general purpose hoses and vinyl hose

- The standard part fuel hose, general purpose hose and vinyl hose may be substituted by the coiled bulk part.
- When ordering the standard part fuel hose, general purpose hose and vinyl hose use the bulk part number written in the parts catalog in brackets ( ) underneath the part name.
- When exchanging the hose, cut and use at the specified length as mentioned in the part name.  
(For the method of cutting the bulk part, and method of filling out orders etc., please refer to the instructions issued with the bulk part.)

### Bulk part number of fuel hose, general purpose hose and vinyl hose.

Example: 9 5 0 0 1 - 7 5 0 0 1 - 5 0 M

**Bulk part number:**  
Refers to the bulk part.

**Marking code (fuel hose and general purpose hose)**

**Change code (Vinyl hose)**

Indicates number mark or change sequence, however, the code for the bulk part must be strictly 0 (zero).

**Types of code:**

- |             |  |                |             |              |               |
|-------------|--|----------------|-------------|--------------|---------------|
| • Fuel hose | 2: Red outside braid<br>(3 mm inside dia. only)        | • General hose | 1: Ash gray | • Vinyl hose | 1: Clear      |
|             | 5: Black inside braid                                  |                | 2: Ash gray |              | 2: Black      |
|             | 3: Red (3 mm inside dia. only)                         |                | 3: Black    |              | 3: Light red  |
|             | 4: Ash gray with red stripe<br>(3 mm inside dia. only) |                | 5: Black    |              | 6: Light red  |
|             | 6: Black   |                |             |              | 7: Pale black |

**Lengths:**

- 001: 1 m (standard)  
003: 3 m  
008: 8 m } Application or specification of some parts is not settled.

**I.D code: (fuel hose and general purpose hose)**

- |            |                    |                    |                             |                             |
|------------|--------------------|--------------------|-----------------------------|-----------------------------|
| 30: 3.0 mm | 50: 5.0 mm         | 70: 7.0 mm         | 11: 11 mm                   | 12: 12 (outside dia. 17) mm |
| 35: 3.5 mm | 55: 5.3 mm, 5.5 mm | 75: 7.3 mm, 7.5 mm | 91: 12 (outside dia. 15) mm | 14: 14 mm                   |
| 45: 4.5 mm | 65: 6.5 mm         | 80: 8.0 mm         | 92: 12 (outside dia. 16) mm | 17: 17 mm                   |

**ID./OD. code: (vinyl hose)**

- |                         |                          |                           |                           |                           |
|-------------------------|--------------------------|---------------------------|---------------------------|---------------------------|
| 01: ID. 2.9, OD. 6.8 mm | 12: ID. 5.0, OD. 7.0 mm  | 21: ID. 8.0, OD. 9.0 mm   | 37: ID. 11.0, OD. 15.0 mm | 50: ID. 16.0, OD. 19.0 mm |
| 03: ID. 3.0, OD. 6.0 mm | 10: ID. 5.0, OD. 8.0 mm  | 23: ID. 8.0, OD. 12.0 mm  | 38: ID. 12.0, OD. 13.0 mm | 55: ID. 17.5, OD. 20.5 mm |
| 05: ID. 3.5, OD. 6.5 mm | 11: ID. 5.0, OD. 9.0 mm  | 25: ID. 9.0, OD. 11.0 mm  | 39: ID. 12.0, OD. 14.0 mm | 60: ID. 22.0, OD. 27.0 mm |
| 07: ID. 4.0, OD. 7.0 mm | 14: ID. 6.0, OD. 9.0 mm  | 27: ID. 9.0, OD. 13.0 mm  | 40: ID. 12.0, OD. 16.0 mm |                           |
| 08: ID. 4.5, OD. 6.5 mm | 17: ID. 7.0, OD. 9.0 mm  | 33: ID. 10.0, OD. 14.0 mm | 43: ID. 13.0, OD. 15.0 mm |                           |
| 09: ID. 4.5, OD. 8.0 mm | 19: ID. 7.0, OD. 11.0 mm | 36: ID. 11.0, OD. 13.0 mm | 45: ID. 14.0, OD. 18.0 mm |                           |

**Hose type:**

- 1: Fuel hose  
3: Vinyl hose  
5: General hose

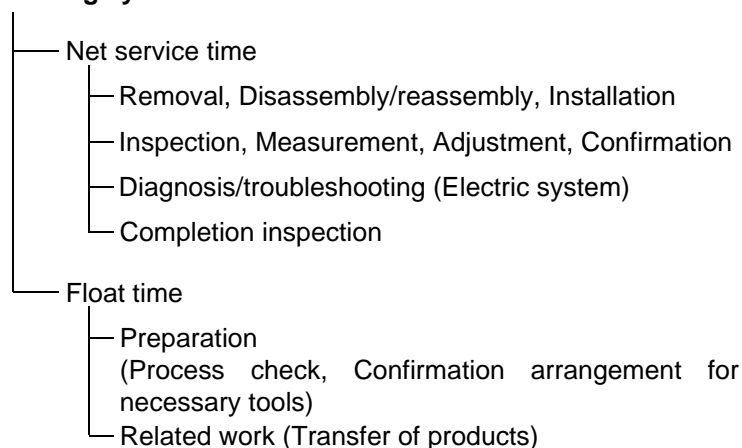
⊙ **CAUTION: It is DANGEROUS to confuse the fuel hose with the general purpose hose or vinyl hose.**

Never use a general purpose hose or vinyl hose in place of a fuel hose or vice versa. Always use the correct bulk part in the parts catalogue, according to the service manual or the instructions issued with the bulk part.

## FLAT RATE SERVICE TIME

Flat rate service time (FRT) means the standard time required to service a product, which is listed in this manual to help the dealers control the actual working process and calculate the service charge by using it as a guide.

### FRT setting system



\* Float time is set by multiplying the net service time by a given coefficient.

### Editorial style

The service items shown in the text are listed with the exchange work time for the repair sales parts as the subject. Other representative service items not using repair parts (removal/installation, adjustment, inspection/measuring, and other work) are listed collectively in the list in the preface, classified according to the work.

### FRT setting standard

- Decimal system (in unit of 0.1) is adopted to set FRT as it is convenient to calculate the wage.  
Example: (0.1) → 6 minutes, (0.2) → 12 minutes  
[Labor cost per hour] x [FRT] = [Wage]
- FRT is set with a hand tool.
- Service items and FRT can be subject to change depending on development of tools and service equipment and improvement in service procedure.

**Work procedure**

- As the work procedure is set with the work time according to the method in the separate Service Manual, refer to this Manual as required.
- Work methods permitting servicing in the shortest time still permitting assurance of safe work and product warranty are used for the setting of service items not listed in the Service Manual.
- Work basically is to be performed by one person, and when two or more people are required, setting is done as the total time for the number of people.
- The set value for the technological level of the workers uses a person with three years of experience in the repair of Honda products as the standard.
- Special tools and service equipment used to set FRT are those specified or recommended in Service Manual.

**Service item whose FRT is not presented**

- Accessories and service parts that are not listed to use in this manual.
  - Locations with little aging deterioration or breakage during normal use.
  - Service work that can be finished by one touch.
  - Service work that is seldom done (i.e. extremely small causes of trouble and service frequency).
  - Products and parts whose location for installation differs according to its status of use and application.
- \* When FRT is not presented, please calculate wages based on appropriate actual work time.

**Operation not included of FRT**

- Oil and coolant water draining, Waiting time for warming up operation and etc..
- Additional operation that involves removal/installation of standard exterior equipment.
- Indirect time spent for service by visiting the customer, trade-in, and delivery.
- Indirect time required for ordering and delivery of parts.
- Cost for grease, adhesive agent, etc. used for service work.

1

**Explanation of FRT by using an example**  
**(The example may differ from the actual presented items)**

Ref. No.	L.O.N.	(Relative ref. Number) Description	F.R.T.
①	1111L1	④ (1, 3, 4, 7) VALVE, INTAKE .....4.1	②
②		• NOTE: OHV type ⑥	⑦
③	1111L1A	• Includes: Engine removal and installation One head (intake all) add .....1.4 ⑤	

- ① Reference No. of the illustration of part that shows location of the replacement work.
- ② FRT is an abbreviation of Flat Rate Time indicating the standard service time required for the replacement.
- ③ LON is an abbreviation of Labor Operation Number, and it is a classification of the service items by the work unit code.

The same operation code is used regardless of the models.

Standard operation is indicated with 6 digits code, and additional operation is indicated with 7 digits code.

- ④ Indicating the intake valve replacement and FRT4.1.
- ⑤ Indicating FRT1.4 that will be added when additional operation (whole intake side of one cylinder head) is done in association with intake valve replacement.

- ⑥ Indicating work condition or application condition of the service item.
- ⑦ Indicating work contents that are included in the service item.
- ⑧ Indicating a reference No. whose operation and time are the same as FRT4.1 for the intake valve.

(The application range is limited to the service items without an LON setting within a same block.)

**How to refer to the service item by using the sample**  
(intake valve replacement)

Open to the page of the block where the intake valve's spare part illustration is shown.



Look for the intake valve illustration, and refer to the service item and FRT that agree with the reference No.

Indication mark for the listing of service items that continues to the following page

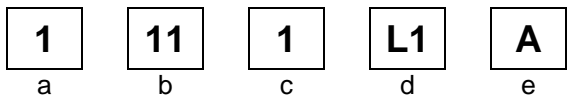
Ref. No.	L.O.N.	(Relative ref. Number) Description	F.R.T.
2	1111L1	VALVE, INTAKE .....	4.1
	.	.	.
	.	.	.

+  
Mark indicated at the last line.

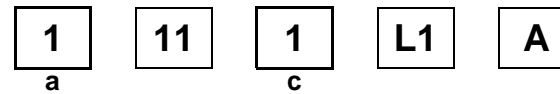
Indication of the block with no setting of FRT

Ref. No.	L.O.N.	(Relative ref. Number) Description	F.R.T.
NO INFORMATION .....			

• LON code system



- a) Category code..... Engine
- b) Location/function code..... Engine upper
- c) Operation code..... Replace
- d) Operation sequence number (Unit code can be shown with alphabet)  
..... Intake valve  
(No regular rule of code)
- e) Additional code ..... One head (intake all)  
(No regular rule of code)



a) Category codes and classification

Code	Category
1	Engine
2	Power drive
3	Fuel & Exhaust
4	Frame & Body
5	Steering
6	Electrical
7	Axle & Brake
8	Control system
9	-
0	Attachments

c) Operation codes and classification

Code	Operation category
1	Replace, Removal/Installation, Change
2	Overhaul
3	Adjust, Rotation
4	(Paint-related work: Top-coat)
5	Test, Inspect/diagnose, Measurement
6	(Overhaul-related work: Rebore)
7	(Overhaul-related work: Reseal)
8	(Resurface)
9	(Paint-related work: Refinish)
0	Repair, Cleaning, Air bleeding

Major service items without using spare parts

- (1) Removal/Installation, (2) Adjustment,  
(3) Inspection/Measurement, (4) Overhaul, (5) Other work

E: Engine, T: Transmission, D: Drive system,  
B: Body and related parts

### (1) Removal/Installation

Set with the parts configuration in the status of being removed from the product.

	LON	DESCRIPTION	FRT
E	1001A0	<b>ENGINE AND GENERATOR-REMOVAL/INSTALLATION</b>	0.8
B	6221E2	<b>INVERTER UNIT-REMOVAL/INSTALLATION</b>	0.5

### (2) Adjustment

	LON	DESCRIPTION	FRT
E	1113A1	<b>VALVE CLEARANCE-ADJUSTMENT</b> NOTE: For 1 product	1.0
	3113A2	<b>CARBURETOR IDLE-ADJUSTMENT</b>	0.2

### (3) Inspection, Measurement, Cleaning

	LON	DESCRIPTION	FRT
E	1105A0	<b>ENGINE OIL-INSPECTION</b>	0.1
	3120A0	<b>AIR CLEANER-CLEANING</b> INCLUDES: Air cleaner-inspection	0.2
	3130A0	<b>SPARK ARRESTER-CLEANING</b> INCLUDES: Spark arrester-inspection	0.2
	6140A0	<b>SPARK PLUG-ADJUSTMENT/CLEANING</b> INCLUDES: Spark plug check NOTE: For 1 product	0.1

### (4) Overhaul

Work condition: The required Measurements, inspections, adjustments, and cleaning/washing of each part are performed, including the main body removal/installation work and the replacement of defective parts.

	LON	DESCRIPTION	FRT
E	3112A0	<b>CARBURETOR-OVERHAUL</b> INCLUDES: All necessary adjustment	0.6

### (5) Other work

	LON	DESCRIPTION	FRT
E	1101E1	<b>ENGINE OIL-CHANGE</b> INCLUDES: Engine oil-inspection	0.1

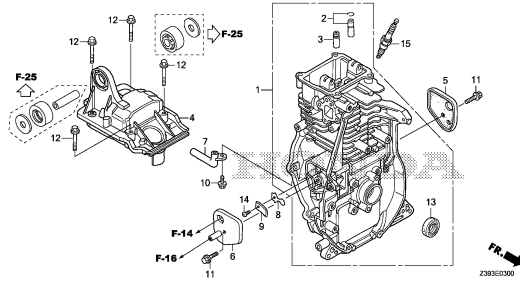
# ENGINE GROUP

**B15**

**E-3**

CYLINDER BARREL

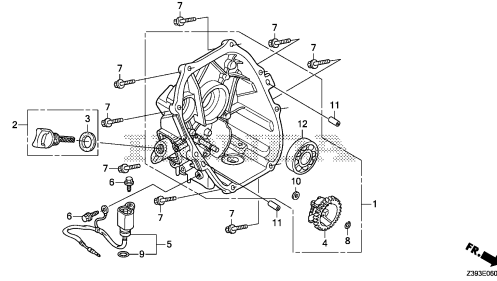
**D 1**



**E-6**

CRANKCASE COVER

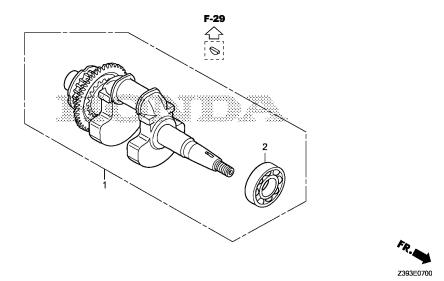
**D 3**



**E-7**

CRANKSHAFT

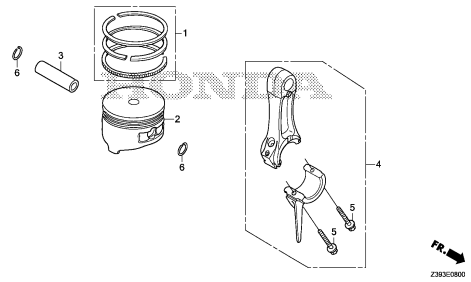
**D 4**



**E-8**

PISTON/CONNECTING ROD

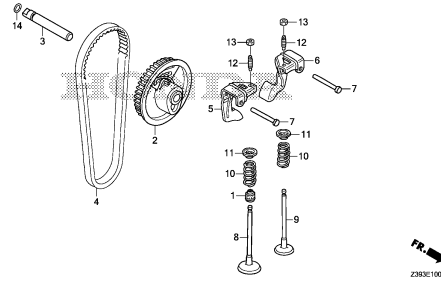
**D 5**



**E-10**

CAMSHAFT PULLEY

**D 6**



**2**

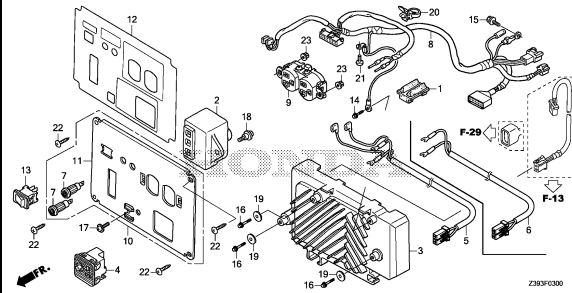
# FRAME GROUP

**B16**

**F-3**

CONTROL PANEL(1)

**E 1**

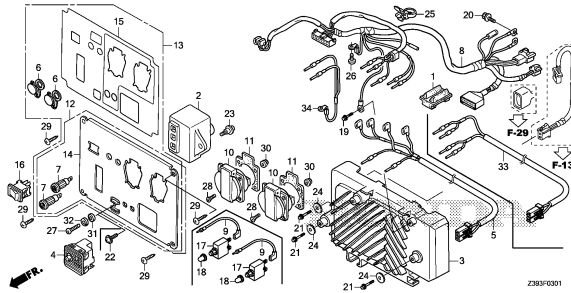


Z30F0300

**F-3-1**

CONTROL PANEL(2)

**E 3**

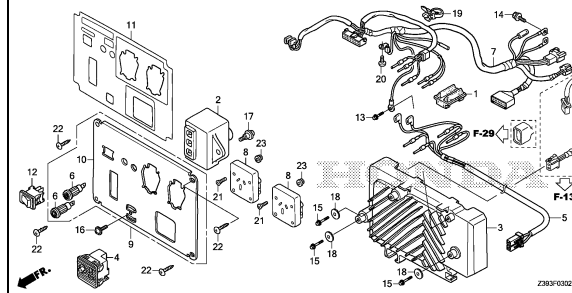


Z30F0301

**F-3-2**

CONTROL PANEL(3)

**E 6**

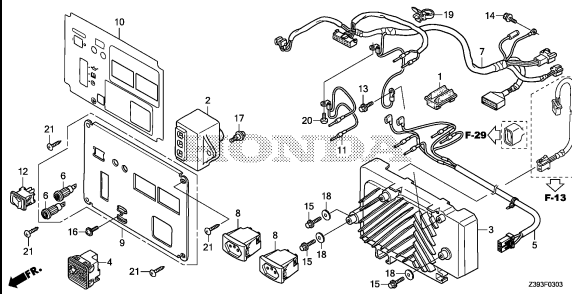


Z30F0302

**F-3-3**

CONTROL PANEL(4)

**E 7**

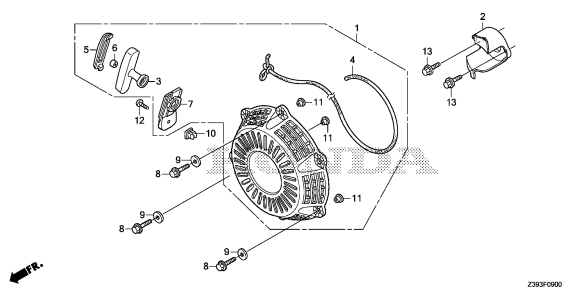


Z30F0303

**F-9**

RECOIL STARTER

**E 8**

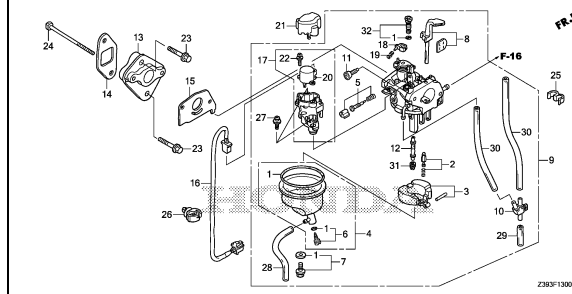


Z30F0900

**F-13**

CARBURETOR

**E 9**

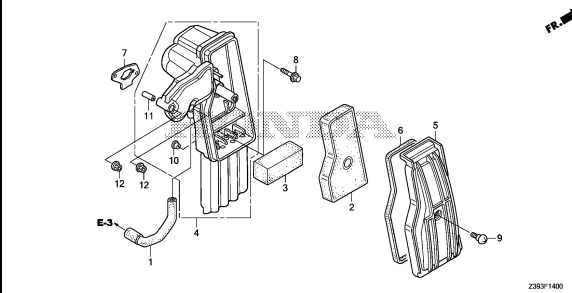


Z30F1300

**F-14**

AIR CLEANER

**E11**

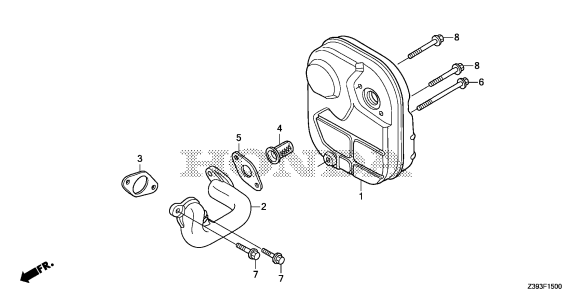


Z30F1400

**F-15**

MUFFLER

**E12**

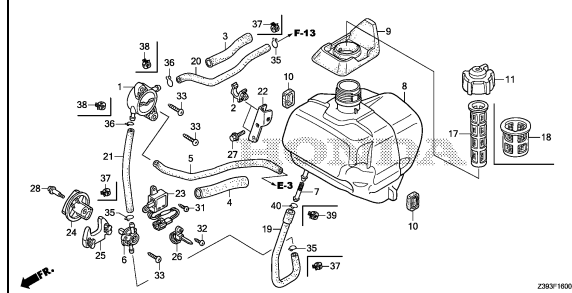


Z30F1500

**F-16**

FUEL TANK

**E13**



Z30F1600

**3**

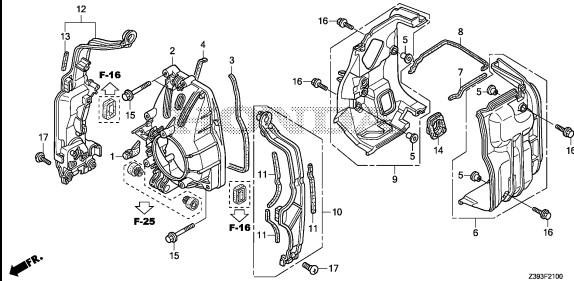
# FRAME GROUP

**C 1**

**F-21**

FAN COVER/SHROUD

**E15**

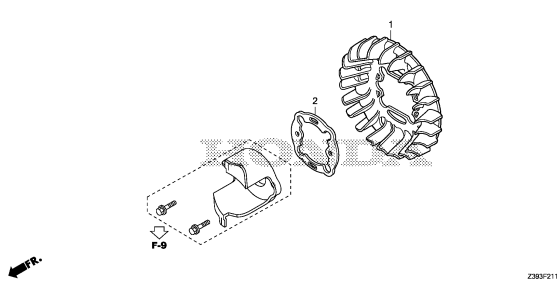


Z30F2100

**F-21-10**

COOLING FAN

**E16**

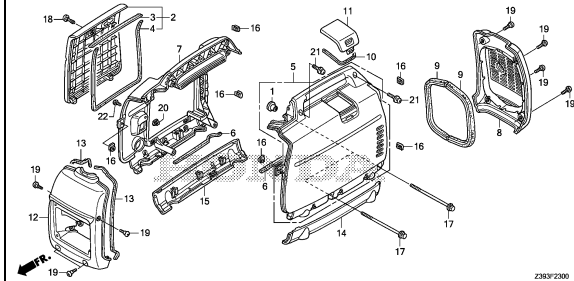


Z30F2110

**F-23**

FRONT COVER/SIDE COVER/REAR COVER

**F 1**

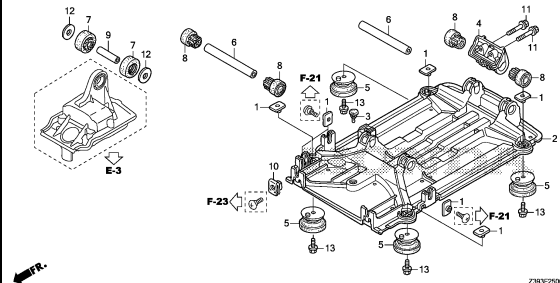


Z30F2200

**F-25**

UNDER COVER

**F 3**

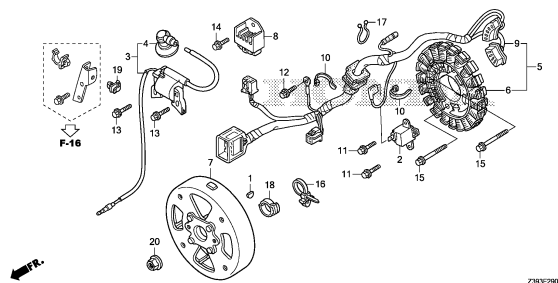


Z30F2500

**F-29**

ROTOR/STATOR

**F 4**

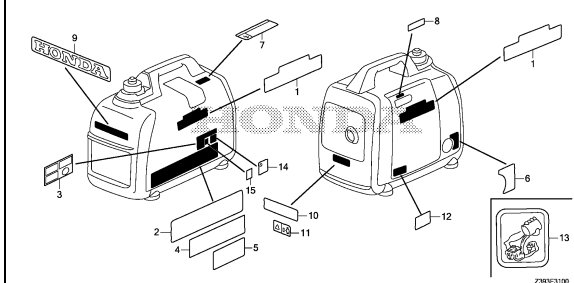


Z30F2900

**F-31**

LABEL

**F 6**

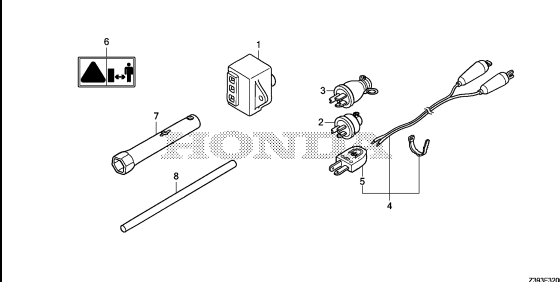


Z30F3100

**F-32**

TOOL/OTHER PARTS

**F 8**

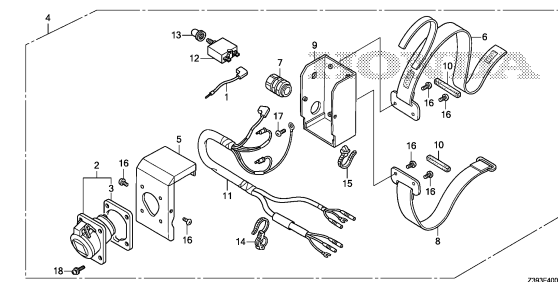


Z30F3200

**F-40**

CONSENT BOX(1)

**F 9**

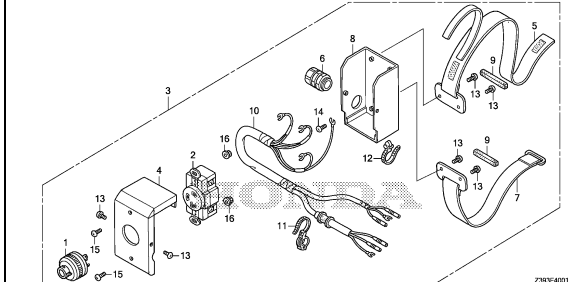


Z30F4000

**F-40-1**

CONSENT BOX(2)

**F11**



Z30F401

**3**

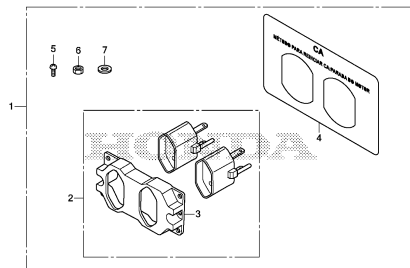
# FRAME GROUP

C 2

FOP-1

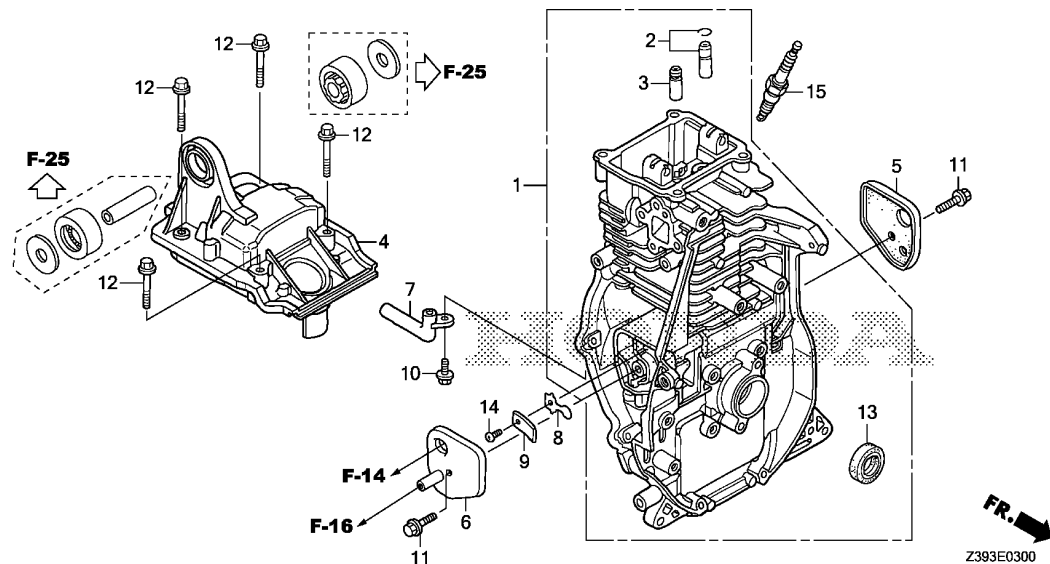
F13

CONSENT KIT



Z38Y0100

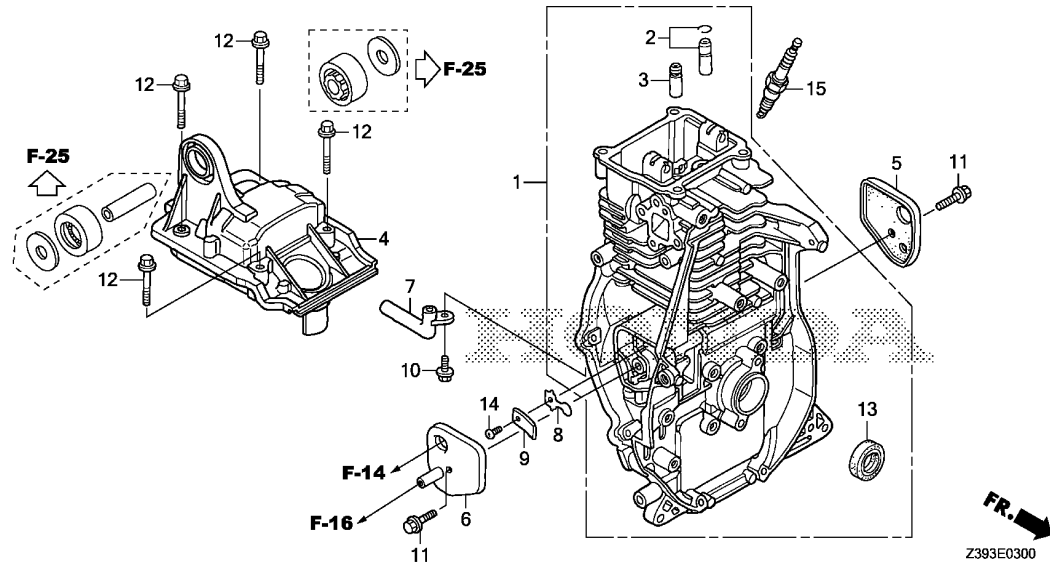
3



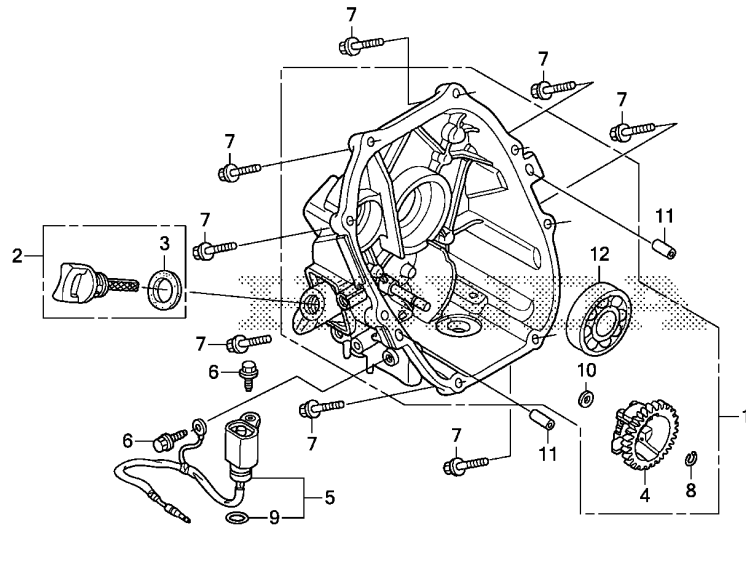
Ref. No.	L.O.N.	(Relative ref. Number) Description	F.R.T.
1	1101A0	BARREL, CYLINDER ..... .INCLUDES: Engine removal and installation	3.0
2	1111E8	GUIDE, EXHAUST VALVE ..... .INCLUDES: Engine removal and installation .INCLUDES: Valve clearance adjustment	2.9
	1111E8E	.Replace intake and exhaust all add .....	0.3
3	1111E9	GUIDE, INTAKE VALVE ..... .INCLUDES: Engine removal and installation .INCLUDES: Valve clearance adjustment	2.9
	1111E9E	.Replace intake and exhaust all add .....	0.3
4	1111D5	CYLINDER HEAD COVER AND/OR PACKING ..... .INCLUDES: Engine removal and installation	0.8
5	1111S4	BREATHER COVER A AND/OR BREATHER PACKING ..... .INCLUDES: Engine removal and installation	1.3

Ref. No.	Part No.	Description	Reqd. QTY	Serial No.	Parts catalogue code
			EU 20i T1		
1	12000-Z0D-405	BARREL ASSY., CYLINDER .....	1		
2	12201-Z0D-305	GUIDE ASSY., EX. VALVE(O.S.) .....	1		
3	12204-Z0D-305	GUIDE, IN. VALVE(O.S.) .....	1		
4	12311-Z0D-D00	COVER, HEAD .....	1		
5	12355-Z0D-000	COVER COMP. A, BREATHER .....	1		
6	12365-Z0D-D00	COVER COMP. B, BREATHER .....	1		
7	15171-Z0D-V00	PIPE, BREATHER .....	1		
8	15571-ZM7-003	VALVE, OIL OUTLET .....	1		
9	15572-ZM7-000	PLATE, STOPPER .....	1		
10	90008-ZM7-000	BOLT, 4X10 .....	1		
11	90014-952-000	BOLT, FLANGE, 6X14(CT200) ...	2		
12	90015-883-000	BOLT, FLANGE, 6X28(CT200) ...	4		
13	91202-KJ9-003	OIL SEAL, 20X32X6 .....	1		
14	93500-03005-0A	SCREW, PAN, 3X5 .....	1		
15	98056-54777	PLUG, SPARK(CR4HSB) .....	(1)		
	98056-55777	PLUG, SPARK(CR5HSB) .....	1		





Ref. No.	L.O.N.	(Relative ref. Number) Description	F.R.T.
6	1111S5	BREATHER COVER B AND/OR BREATHER PACKING ..... .INCLUDES: Engine removal and installation	1.3
7	1111G1	PIPE, BREATHER ..... .INCLUDES: Engine removal and installation	1.3
8	1171A8	VALVE, OIL OUTLET ..... .INCLUDES: Engine removal and installation	1.3
13	1101E4	OIL SEAL, CRANKSHAFT :FRONT .. .INCLUDES: Engine removal and installation	2.4
15	6141C1	PLUG, SPARK ..... .INCLUDES: Spark plug check	0.1



FR. →  
Z393E0600

Ref. No.	L.O.N.	(Relative ref. Number) Description	F.R.T.
1	1101F1	COVER, CRANKCASE ..... .INCLUDES: Engine removal and installation	1.5
4	1161A7	HOLDER, GOVERNOR WEIGHT ..... .INCLUDES: Engine removal and installation	1.6
5	6151E8	SWITCH, OIL LEVEL ..... .INCLUDES: Engine removal and installation	1.3
12	1101A6	BEARING, CRANKSHAFT :REAR .... .INCLUDES: Engine removal and installation	1.7

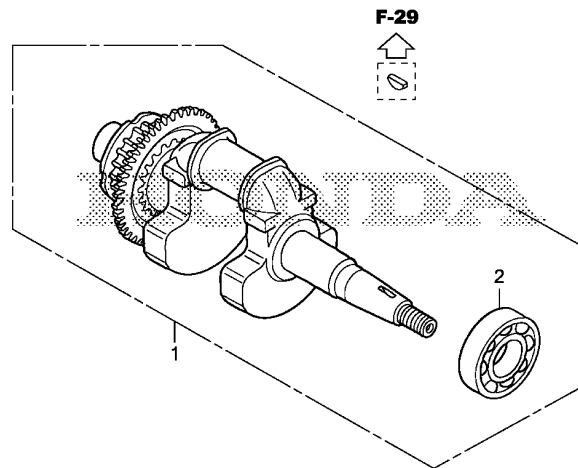
Ref. No.	Part No.	Description	Reqd. QTY	Serial No.	Parts catalogue code
			EU 20i T1		
1	11300-Z0D-418	COVER ASSY., CRANKCASE .....	1		
2	15600-ZDF-000	CAP ASSY., OIL FILLER .....	1		
3	15625-Z0T-800	PACKING, OIL FILLER CAP .....	1		
4	16512-ZL8-000	HOLDER, GOVERNOR WEIGHT .....	1		
5	35480-Z0D-D02	SWITCH ASSY., OIL LEVEL .....	1		
6	90014-952-000	BOLT, FLANGE, 6X14(CT200) ...	2		
7	90121-952-000	BOLT, FLANGE, 6X25(CT200) ...	8		
8	90602-ZE1-000	CLIP, GOVERNOR HOLDER .....	1		
9	91302-ZL8-003	O-RING, 11.8X2.4 .....	1		
10	94101-06800	WASHER, PLAIN, 6MM .....	1		
11	94301-08200	DOWEL PIN, 8X20 .....	2		
12	96100-62040-00	BEARING, RADIAL BALL, 6204 ..	1		



E-7

CRANKSHAFT

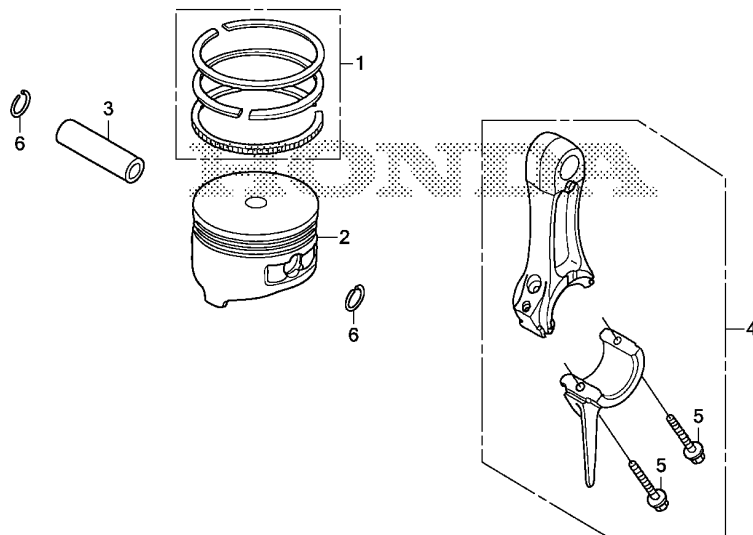
D 4



Ref. No.	L.O.N.	(Relative ref. Number) Description	F.R.T.
1	1101F0	CRANKSHAFT ..... .INCLUDES: Engine removal and installation	2.4
2	1101A4	BEARING, CRANKSHAFT :FRONT ... .INCLUDES: Engine removal and installation	2.6

Ref. No.	Part No.	Description	Reqd. QTY	Serial No.	Parts catalogue code
			EU 20i T1		
1	13310-Z0D-D00	CRANKSHAFT COMP. ....	1		
2	96100-62040-00	BEARING, RADIAL BALL, 6204 ..	1		

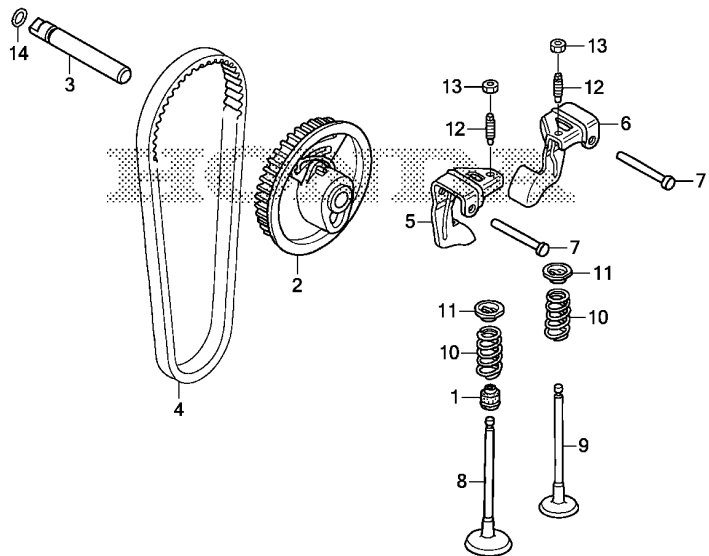
2



Ref. No.	L.O.N.	(Relative ref. Number) Description	F.R.T.
2	1111R1	(1,3,4) PISTON AND/OR RING SET AND/OR BEARING AND/OR ROD ..... .INCLUDES: Engine removal and installation .INCLUDES: Inspection/Measurement/Cleaning	2.7

Ref. No.	Part No.	Description	Reqd. QTY	Serial No.	Parts catalogue code
			EU 20i T1		
1	13010-Z0D-003	RING SET, PISTON .....	1		
2	13101-Z0D-000	PISTON .....	1		
3	13111-ZE0-000	PIN, PISTON .....	1		
4	13200-Z0D-000	ROD ASSY., CONNECTING .....	1		
	13200-Z0D-305	ROD ASSY., CONNECTING (UNDER SIZE) (1)			
5	90001-ZM7-000	BOLT, CONNECTING ROD .....	2		
6	90551-ZE0-000	CLIP, PISTON PIN, 13MM .....	2		

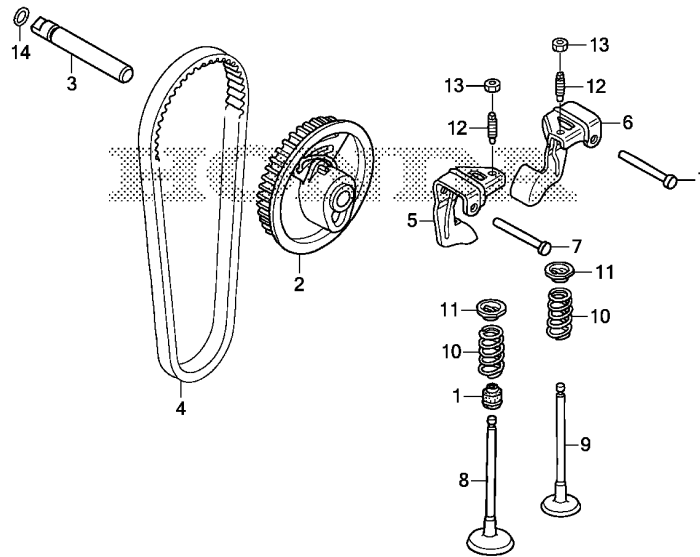




FR. →  
Z393E1000

Ref. No.	L.O.N.	(Relative ref. Number) Description	F.R.T.
1	1111K2	SEAL, INTAKE VALVE STEM ..... .INCLUDES: Engine removal and installation .INCLUDES: Valve clearance adjustment	2.7
2	1111N5	PULLEY, CAMSHAFT ..... .INCLUDES: Engine removal and installation .INCLUDES: Valve clearance adjustment	1.1
3	1111R8	SHAFT, CAM PULLEY ..... .INCLUDES: Engine removal and installation .INCLUDES: Valve clearance adjustment (14)	1.0
4	1111N6	BELT, TIMING ..... .INCLUDES: Engine removal and installation .INCLUDES: Valve clearance adjustment	2.4
5	1111A2	ARM, ROCKER :INTAKE ..... .INCLUDES: Engine removal and installation	1.2

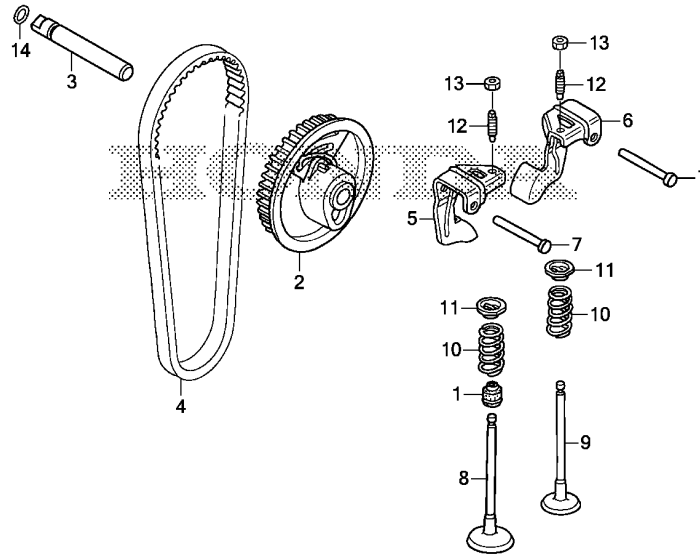
Ref. No.	Part No.	Description	Reqd. QTY	Serial No.	Parts catalogue code
			EU 20i T1		
1	12209-KT7-013	SEAL, VALVE STEM .....	1		
2	14320-ZDD-000	PULLEY COMP., CAMSHAFT .....	1		
3	14324-ZDD-000	SHAFT, CAM PULLEY .....	1		
4	14400-ZDD-003	BELT, TIMING(61YU7 G-200) ...	1		
5	14431-ZDD-000	ARM, IN. VALVE ROCKER .....	1		
6	14441-ZDD-000	ARM, EX. VALVE ROCKER .....	1		
7	14461-ZL8-000	SHAFT, ROCKER ARM .....	2		
8	14711-ZDD-000	VALVE, IN. ....	1		
9	14721-ZDD-000	VALVE, EX. ....	1		
10	14751-ZDD-000	SPRING, VALVE .....	2		
11	14771-ZM3-010	RETAINER, VALVE SPRING .....	2		
12	90012-333-000	SCREW, TAPPET ADJUSTING .....	2		
13	90206-001-000	NUT, TAPPET ADJUSTING .....	2		
14	91301-ZM0-V31	O-RING, 6.8X1.9(ARAI) .....	1		



Z393E1000

Ref. No.	L.O.N.	(Relative ref. Number) Description	F.R.T.
+ 5		.INCLUDES: Valve clearance adjustment .NOTE: Same time for two units	
6	1111A1	ARM, ROCKER :EXHAUST ..... .INCLUDES: Engine removal and installation .INCLUDES: Valve clearance adjustment .NOTE: Same time for two units	1.2
8	1111L1	VALVE, INTAKE ..... .INCLUDES: Engine removal and installation .INCLUDES: Valve clearance adjustment and reface	2.8
	1111L1E	.Replace intake and exhaust all add .....	0.2
9	1111L0	VALVE, EXHAUST ..... .INCLUDES: Engine removal and installation .INCLUDES: Valve clearance adjustment and reface	2.8
	1111L0E	.Replace intake and exhaust all add .....	0.2
+10	1111P3	SPRING, VALVE :INTAKE .....	2.7



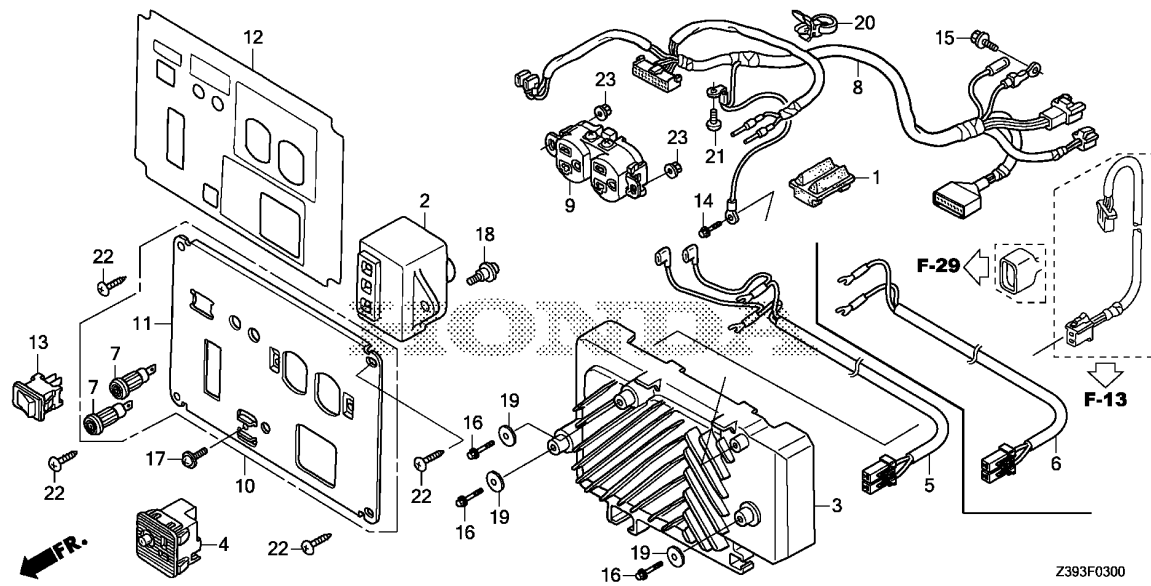


Ref. No.	L.O.N.	(Relative ref. Number) Description	F.R.T.
+10		.INCLUDES: Engine removal and installation .INCLUDES: Valve clearance adjustment	
1111P3A		.Replace intake and exhaust all add .....	0.1
1111P4		SPRING, VALVE :EXHAUST .....	2.7
		.INCLUDES: Engine removal and installation .INCLUDES: Valve clearance adjustment	
1111P4A		.Replace intake and exhaust all add .....	0.1

F-3

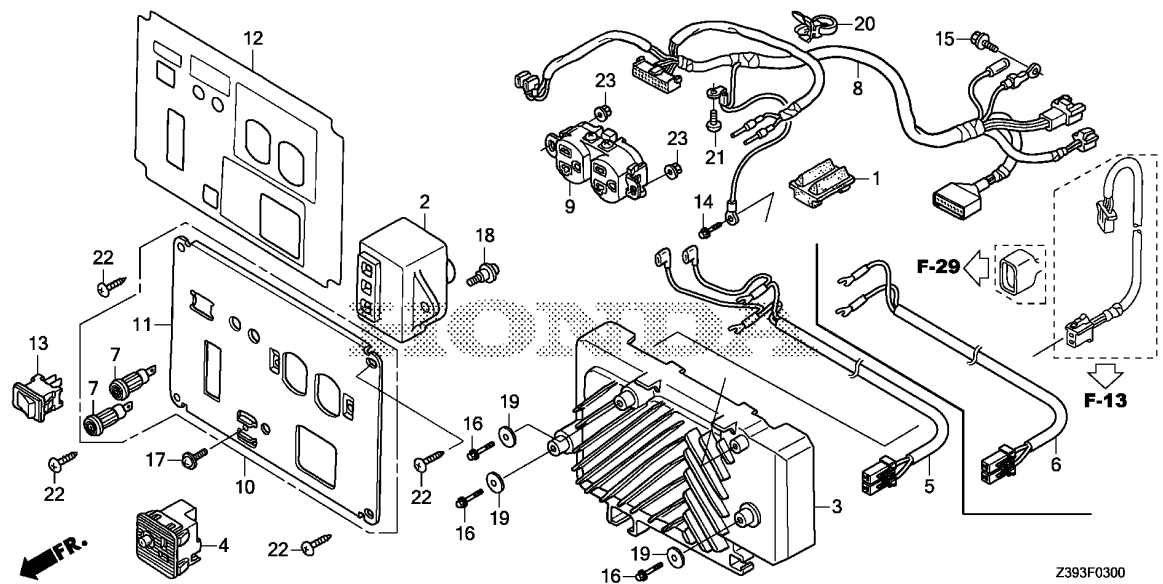
CONTROL PANEL(1)

E 1



Ref. No.	L.O.N.	(Relative ref. Number) Description	F.R.T.
1	3101M0	RUBBER B, TANK MOUNTING .....	0.3
2	6201D0	SPARK UNIT, GENERATOR .....	0.3
3	6221F7	INVERTER UNIT, GENERATOR .....	0.8
4	6221A9	CONSENT, DIRECT CURRENT .....	0.3
5		(6)	
	6111D3	HARNESS, SUB WIRE .....	0.5
7	6221P3	SOCKET, COMPOSITE .....	0.2
8	6111B9	HARNESS, CONTROL WIRE .....	0.7
9	6221D5	RECEPTACLE/CONSENT, CONTROL PANEL .....	0.4
10	6221N9	PANEL, GENERATOR CONTROL .....	0.7
12	6221C5	MARK, CONTROL PANEL .....	0.7
13	6151E5	SWITCH, AUTO THROTTLE .....	0.2

Ref. No.	Part No.	Description	Reqd. QTY		Serial No.	Parts catalogue code
			EU	T1		
1	17533-Z07-000	RUBBER B, TANK MOUNTING .....	2	-----	L,LT,RHH6,RHH7,RR4,RR5,RR6,RR7,SS5,SS6	
2	30400-Z07-013	SPARK UNIT .....	1	-----	L,LT,RHH6,RHH7,RR4,RR5,RR6,RR7,SS5,SS6	
3	31310-Z07-E21	INVERTER UNIT .....	1	-----	L,LT	
	31310-Z07-E61	.....	1	-----	RHH6,RHH7	
	31310-Z07-D21	.....	1	-----	RR4	
	31310-Z07-F61	.....	1	-----	RR5,RR6,RR7,SS5,SS6	
4	31460-ZT3-C01	CONSENT COMP., D.C. ....	1	-----	L,LT,RHH6,RHH7,RR4,RR5,RR6,RR7,SS5,SS6	
5	32105-Z07-F31	HARNESS ASSY., SUB WIRE .....	1	-----	L,LT	
	32105-Z07-U71	.....	1	-----	RHH6,RHH7	
	32105-Z07-E71	.....	1	-----	RR6,RR7,SS6	
6	32105-Z07-891	HARNESS ASSY., SUB WIRE .....	1	-----	RR4,RR5,SS5	
7	32139-Z07-C00	SOCKET, COMPOSITE .....	2	-----	L,LT,RHH6,RHH7,RR6,RR7,SS6	
8	32150-Z07-E20	HARNESS ASSY., CONTROL WIRE .....	1	-----	L,LT	
	32150-Z07-U70	.....	1	-----	RHH6,RHH7	
	32150-Z07-F60	.....	1	-----	RR4,RR5,RR6,RR7	
	32150-Z07-E70	.....	1	-----	SS5,SS6	
9	32330-Z07-C30	CONSENT ASSY. (20A/125V) .....	1	-----	L,LT	
		(MATSUSHITA)	1	-----	RHH6,RHH7,RR4,RR5,RR6,RR7,SS5,SS6	
10	32345-Z07-C31	PANEL COMP., CONTROL .....	1	-----	L,LT	
	32345-Z07-C00	.....	1	-----	RHH6,RHH7,RR6,RR7,SS6	
11	32346-Z07-C31	PANEL, CONTROL .....	1	-----	L,LT	
	32346-Z07-C00	.....	1	-----	RHH6,RHH7,RR4,RR5,RR6,RR7,SS5,SS6	
12	32366-Z07-D30	MARK, CONTROL PANEL .....	1	-----	L	
	32366-Z07-S80	.....	1	-----	LT	
	32366-Z07-S71	.....	1	-----	RHH6,RHH7	
	32366-Z07-C70	.....	1	-----	RR4,RR5,SS5	

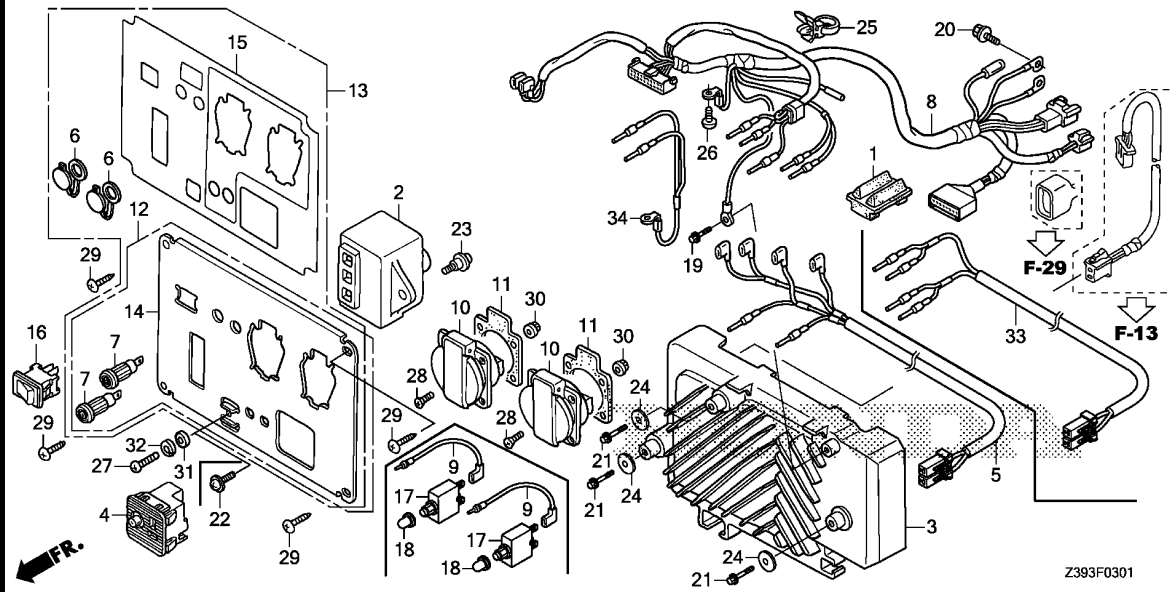


Ref. No.	Part No.	Description	Reqd. QTY		Serial No.	Parts catalogue code
			EU	20i		
12)	32366-Z07-870	MARK, CONTROL PANEL .....	1	-----	-----	RR6,RR7,SS6
13	36214-ZS9-A01	SWITCH COMP., AUTO-THROTTLE ..	1	-----	-----	L,LT,RHH6,RHH7,RR4,RR5,RR6,RR7,SS5,SS6
14	90002-892-000	BOLT, FLANGE, 5X10 .....	1	-----	-----	L,LT,RHH6,RHH7,RR4,RR5,RR6,RR7,SS5,SS6
15	90019-883-000	BOLT, FLANGE, 5X10 .....	1	-----	-----	L,LT,RHH6,RHH7,RR4,RR5,RR6,RR7,SS5,SS6
16	90101-P4V-010	BOLT, FLANGE, 5X12 .....	3	-----	-----	L,LT,RHH6,RHH7,RR4,RR5,RR6,RR7,SS5,SS6
17	90102-899-003	SCREW, PAN, 5X12 .....	1	-----	-----	L,LT,RHH6,RHH7,RR4,RR5,RR6,RR7,SS5,SS6
18	90108-MN0-000	SCREW, PAN, 5X13 .....	1	-----	-----	L,LT,RHH6,RHH7,RR4,RR5,RR6,RR7,SS5,SS6
19	90581-342-000	WASHER, 20MM .....	3	-----	-----	L,LT,RHH6,RHH7,RR4,RR5,RR6,RR7,SS5,SS6
20	90676-692-000	BAND, 100MM(BLACK) .....	1	-----	-----	L,LT,RHH6,RHH7,RR4,RR5,RR6,RR7,SS5,SS6
21	93500-05008-3J	SCREW, PAN, 5X8 .....	1	-----	-----	L,LT,RHH6,RHH7,RR4,RR5,RR6,RR7,SS5,SS6
22	93913-25480	SCREW, TAPPING, 5X16(PO) ....	4	-----	-----	L,LT,RHH6,RHH7,RR4,RR5,RR6,RR7,SS5,SS6
23	94050-04080	NUT, FLANGE, 4MM .....	2	-----	-----	L,LT,RHH6,RHH7,RR4,RR5,RR6,RR7,SS5,SS6

F-3-1

CONTROL PANEL(2)

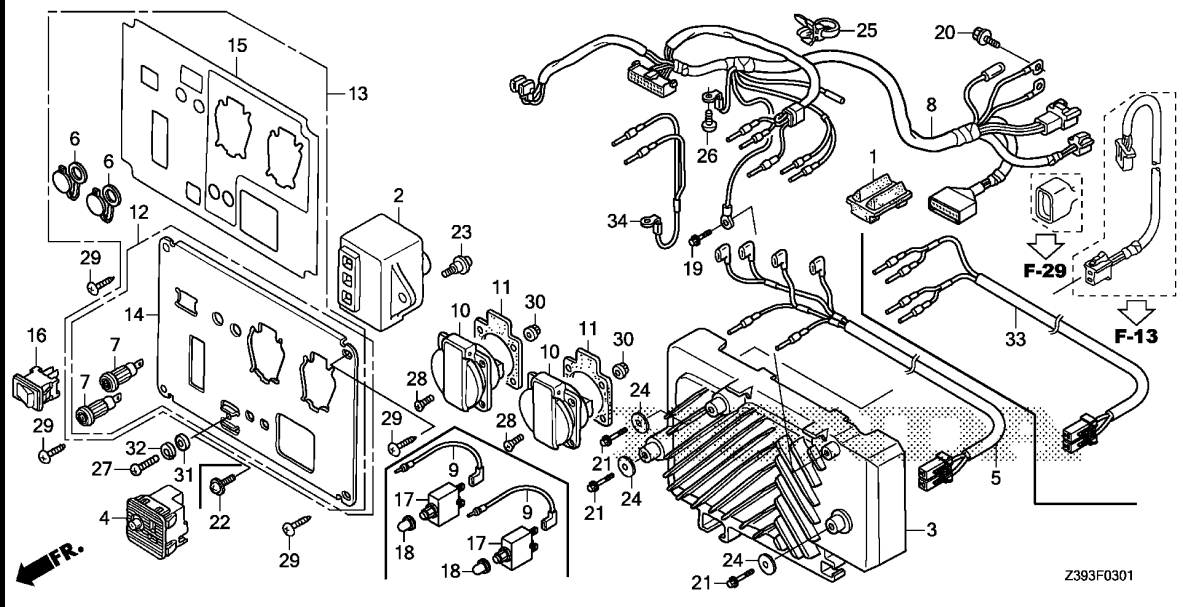
E 3



Ref. No.	L.O.N.	(Relative ref. Number) Description	F.R.T.
1	3101M0	RUBBER B, TANK MOUNTING .....	0.3
2	6201D0	SPARK UNIT, GENERATOR .....	0.3
3	6221F7	INVERTER UNIT, GENERATOR .....	0.8
4	6221A9	CONSENT, DIRECT CURRENT .....	0.3
5		(33)	
	6111D3	HARNESS, SUB WIRE .....	0.5
7	6221P3	SOCKET, COMPOSITE .....	0.2
8	6111B9	HARNESS, CONTROL WIRE .....	0.7
10		(11)	
	6221K5	RECEPTACLE/CONSENT, CONTROL PANEL (A) .....	0.3
	6221J3	RECEPTACLE/CONSENT, CONTROL PANEL (A) :ALL .....	0.4
12	6221N9	PANEL, GENERATOR CONTROL .....	0.7
13	6221T2	PANEL, GENERATOR CONTROL(A) ..	0.5
14	6221C5	MARK, CONTROL PANEL .....	0.7
15	6151E5	SWITCH, AUTO THROTTLE .....	0.2
17	6221D4	PROTECTOR, CIRCUIT .....	0.3
34	6101A8	CABLE, BATTERY EARTH .....	0.3

Ref. No.	Part No.	Description	Reqd. QTY		Serial No.	Parts catalogue code
			EU	T1		
1	17533-Z07-000	RUBBER B, TANK MOUNTING .....	2	-----	B,CL,F,GG2,GG3,GW11,GW12,RG,SK3,W	
2	30400-Z07-013	SPARK UNIT .....	1	-----	B,CL,F,GG2,GG3,GW11,GW12,RG,SK3,W	
3	31310-Z07-E61	INVERTER UNIT .....	1	-----	B,CL,F,GG2,GG3,GW11,GW12,RG,W	
	31310-Z07-F61	.....	1	-----	SK3	
4	31460-ZT3-C01	CONSENT COMP., D.C. ....	1	-----	B,CL,F,GG2,GG3,GW11,GW12,RG,SK3,W	
5	32105-Z07-E61	HARNESS ASSY., SUB WIRE .....	1	-----	B,CL,F,GG2,GG3,GW11,GW12,RG,W	
6	32138-Z07-E60	COVER, SOCKET .....	2	-----	B,CL,F,GG2,GG3,GW11,GW12,W	
7	32139-Z07-C00	SOCKET, COMPOSITE .....	2	-----	B,CL,F,GG2,GG3,GW11,GW12,RG,W	
8	32150-Z07-E60	HARNESS ASSY., CONTROL WIRE ..	1	-----	B,CL,F,GG2,GG3,GW11,GW12,RG,W	
	32150-Z07-E70	.....	1	-----	SK3	
9	32221-Z07-C60	CORD, TERMINAL .....	2	-----	B,CL,F,GG2,GG3,GW11,GW12,RG,W	
10	32331-Z07-C90	RECEPTACLE(13A/250V) .....	2	-----	B	
	32331-Z25-A60	RECEPTACLE(16A-250V) .....	2	-----	CL,GG2,GG3,RG	
	32331-Z07-D50	RECEPTACLE(10/16A-250V) .....	2	-----	F	
	32331-Z25-640	RECEPTACLE(16A-250V) .....	2	-----	GW11,GW12	
	32331-ZT3-C60	RECEPTACLE(16A/250V) .....	2	-----	SK3	
	32331-ZC3-R40	RECEPTACLE(10A/250V) .....	2	-----	W	
11	32335-875-610	PACKING, RECEPTACLE .....	2	-----	B,CL,F,GG2,GG3,GW11,GW12,RG,SK3,W	
12	32345-Z07-C90	PANEL COMP., CONTROL .....	1	-----	RG	
13	32345-Z07-E61	PANEL COMP., CONTROL .....	1	-----	B,CL,F,GG2,GG3,GW11,GW12,W	
14	32346-Z07-C90	PANEL, CONTROL .....	1	-----	B,CL,F,GG2,GG3,GW11,GW12,RG,W	
	32346-Z07-C60	.....	1	-----	SK3	
15	32366-Z07-C62	MARK, CONTROL PANEL .....	1	-----	B,CL,F,GG2,GG3,GW11,GW12,RG,W	
	32366-Z07-V31	.....	1	-----	SK3	
16	36214-ZS9-A01	SWITCH COMP., AUTO-THROTTLE ..	1	-----	B,CL,F,GG2,GG3,GW11,GW12,RG,SK3,W	

3



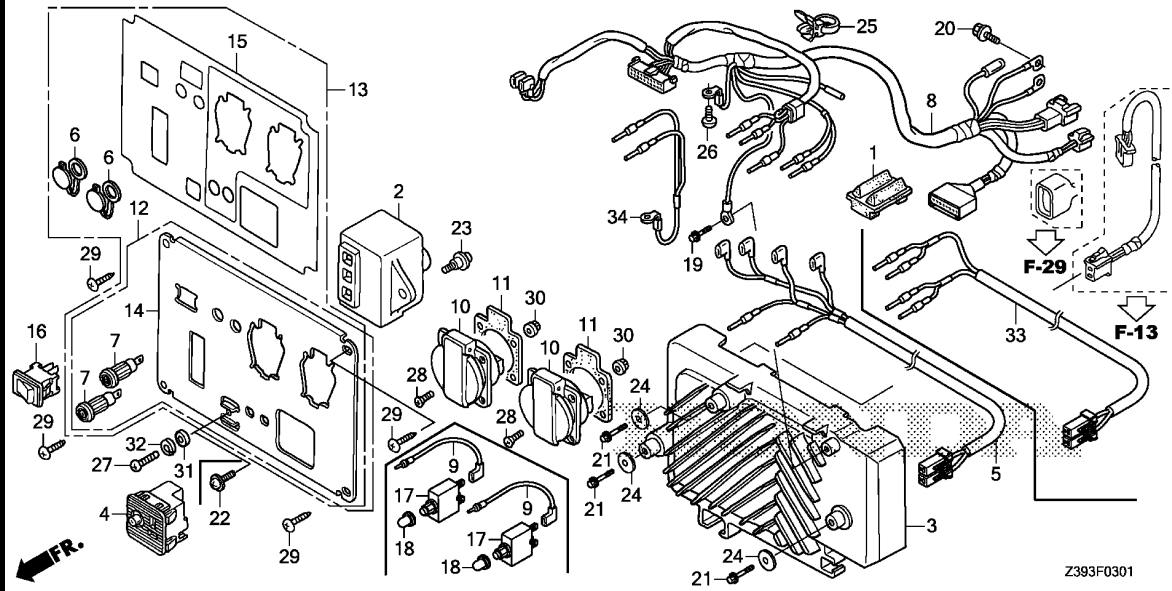
Z393F0301

Ref. No.	Part No.	Description	Reqd. QTY		Serial No.	Parts catalogue code
			EU	T1		
17	38240-Z07-C91	PROTECTOR, CIRCUIT(13A)(WHITE)(TYCO)	2		----- B	
	38240-Z07-E90	PROTECTOR, CIRCUIT(13A)(BLACK)(JOEMEX)	2		----- B	
	38240-Z25-A63	PROTECTOR, CIRCUIT(16A)(WHITE)(TYCO)	2		----- CL,F,GG2,GG3,GW11,GW12,RG	
	38240-Z25-F60	PROTECTOR, CIRCUIT(16A)(BLACK)(JOEMEX)	2		----- CL,F,GG2,GG3,GW11,GW12,RG	
	38240-Z07-S41	PROTECTOR, CIRCUIT(10A)(WHITE)(TYCO)	2		----- W	
	38240-Z07-U40	PROTECTOR, CIRCUIT(10A)(BLACK)(JOEMEX)	2		----- W	
18	38242-Z25-A62	COVER COMP., CIRCUIT PROTECTOR	2		----- B,CL,F,GG2,GG3,GW11,GW12,RG,W	
19	90002-892-000	BOLT, FLANGE, 5X10	1		----- B,CL,F,GG2,GG3,GW11,GW12,RG,SK3,W	
20	90019-883-000	BOLT, FLANGE, 5X10	1		----- B,CL,F,GG2,GG3,GW11,GW12,RG,SK3,W	
21	90101-P4V-010	BOLT, FLANGE, 5X12	3		----- B,CL,F,GG2,GG3,GW11,GW12,RG,SK3,W	
22	90102-899-003	SCREW, PAN, 5X12	1		----- SK3	
23	90108-MN0-000	SCREW, PAN, 5X13	1		----- B,CL,F,GG2,GG3,GW11,GW12,RG,SK3,W	
24	90581-342-000	WASHER, 20MM	3		----- B,CL,F,GG2,GG3,GW11,GW12,RG,SK3,W	
25	90676-692-000	BAND, 100MM(BLACK)	1		----- B,CL,F,GG2,GG3,GW11,GW12,RG,SK3,W	
26	93500-05008-3J	SCREW, PAN, 5X8	1		----- B,CL,F,GG2,GG3,GW11,GW12,RG,SK3,W	
27	93500-05016-3J	SCREW, PAN, 5X16	1		----- B,CL,F,GG2,GG3,GW11,GW12,RG,W	
28	93600-04012-0G	SCREW, FLAT, 4X12	8		----- B,CL,F,GG2,GG3,GW11,GW12,RG,SK3,W	
29	93913-25480	SCREW, TAPPING, 5X16(PO)	4		----- B,CL,F,GG2,GG3,GW11,GW12,RG,SK3,W	
30	94050-04000	NUT, FLANGE, 4MM	8		----- B,CL,F,GG2,GG3,GW11,GW12,RG,SK3,W	
31	94101-05000	WASHER, PLAIN, 5MM	1		----- B,CL,F,GG2,GG3,GW11,GW12,RG,W	

F-3-1

CONTROL PANEL(2)

E 5



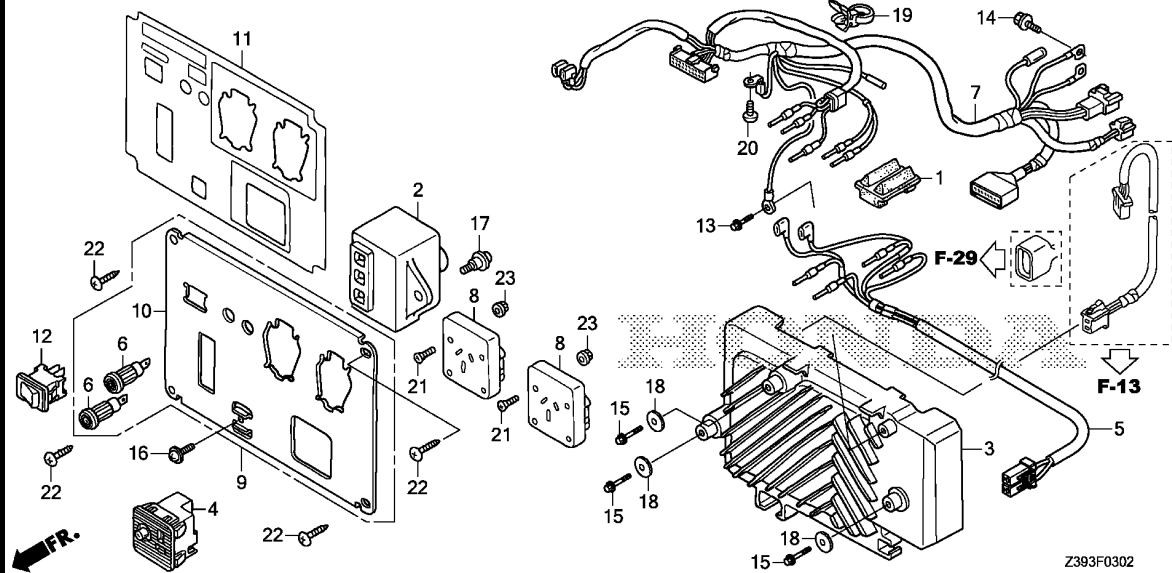
Ref. No.	Part No.	Description	Reqd. QTY		Serial No.	Parts catalogue code
			EU	20i		
32	94111-05000	WASHER, SPRING, 5MM .....	1		----- B,CL,F,GG2,GG3,GW11,GW12,RG,W	
33	32105-Z07-W21	HARNESS ASSY., SUB WIRE .....	1		----- SK3	
34	32601-Z07-S20	CABLE, BATTERY EARTH .....	1		----- SK3	

3

# F-3-2

# CONTROL PANEL(3)

E 6



Ref. No.	L.O.N.	(Relative ref. Number) Description	F.R.T.
1	3101M0	RUBBER B, TANK MOUNTING .....	0.3
2	6201D0	SPARK UNIT, GENERATOR .....	0.3
3	6221F7	INVERTER UNIT, GENERATOR .....	0.8
4	6221A9	CONSENT, DIRECT CURRENT .....	0.3
5	6111D3	HARNESS, SUB WIRE .....	0.5
6	6221P3	SOCKET, COMPOSITE .....	0.2
7	6111B9	HARNESS, CONTROL WIRE .....	0.7
8	6221J4	SOCKET, CONTROL PANEL .....	0.3
	6221J5	SOCKET, CONTROL PANEL :ALL ...	0.4
9	6221N9	PANEL, GENERATOR CONTROL .....	0.7
11	6221C5	MARK, CONTROL PANEL .....	0.7
12	6151E5	SWITCH, AUTO THROTTLE .....	0.2

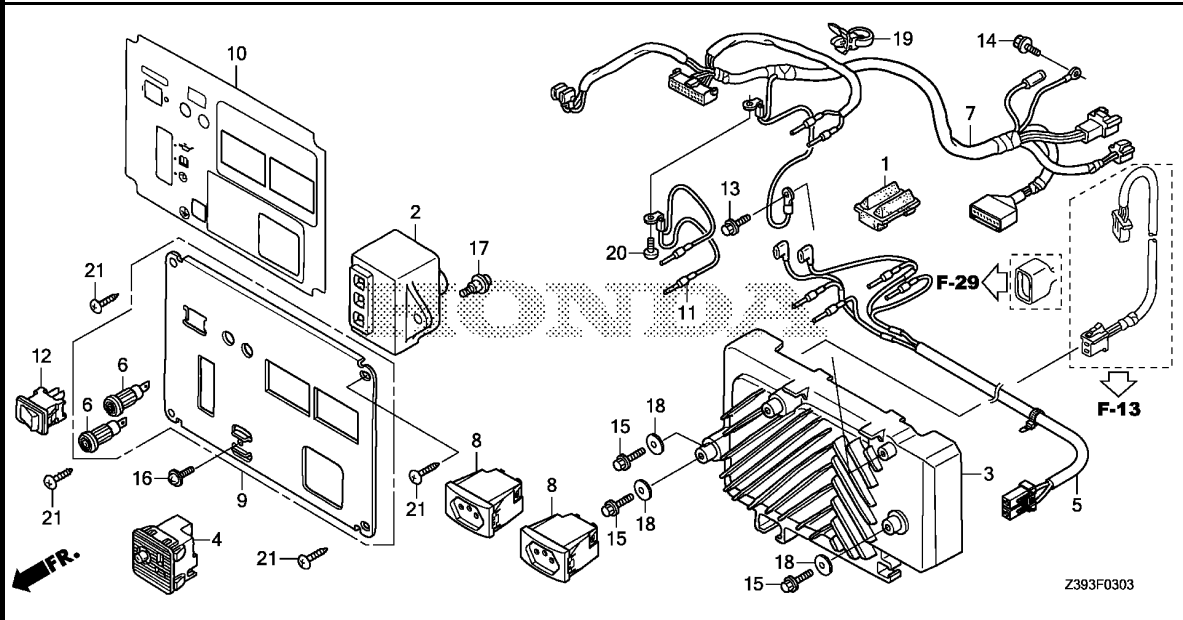
3

Ref. No.	Part No.	Description	Reqd. QTY		Serial No.	Parts catalogue code
			EU	T1		
1	17533-Z07-000	RUBBER B, TANK MOUNTING .....	2	-----	-----	U
2	30400-Z07-013	SPARK UNIT .....	1	-----	-----	U
3	31310-Z07-E81	INVERTER UNIT .....	1	-----	-----	U
4	31460-ZT3-C01	CONSENT COMP., D.C. ....	1	-----	-----	U
5	32105-Z07-E81	HARNESS ASSY., SUB WIRE .....	1	-----	-----	U
6	32139-Z07-C00	SOCKET, COMPOSITE .....	2	-----	-----	U
7	32150-Z07-E80	HARNESS ASSY., CONTROL WIRE ..	1	-----	-----	U
8	32332-Z07-C81	SOCKET(15A/250V) .....	2	-----	-----	U
9	32345-Z07-C60	PANEL COMP., CONTROL .....	1	-----	-----	U
10	32346-Z07-C60	PANEL, CONTROL .....	1	-----	-----	U
11	32366-Z07-C80	MARK, CONTROL PANEL .....	1	-----	-----	U
12	36214-ZS9-A01	SWITCH COMP., AUTO-THROTTLE ..	1	-----	-----	U
13	90002-892-000	BOLT, FLANGE, 5X10 .....	1	-----	-----	U
14	90019-883-000	BOLT, FLANGE, 5X10 .....	1	-----	-----	U
15	90101-P4V-010	BOLT, FLANGE, 5X12 .....	3	-----	-----	U
16	90102-899-003	SCREW, PAN, 5X12 .....	1	-----	-----	U
17	90108-MN0-000	SCREW, PAN, 5X13 .....	1	-----	-----	U
18	90581-342-000	WASHER, 20MM .....	3	-----	-----	U
19	90676-692-000	BAND, 100MM(BLACK) .....	1	-----	-----	U
20	93500-05008-3J	SCREW, PAN, 5X8 .....	1	-----	-----	U
21	93600-04020-0G	SCREW, FLAT, 4X20 .....	8	-----	-----	U
22	93913-25480	SCREW, TAPPING, 5X16(P0) .....	4	-----	-----	U
23	94050-04000	NUT, FLANGE, 4MM .....	8	-----	-----	U

# F-3-3

# CONTROL PANEL(4)

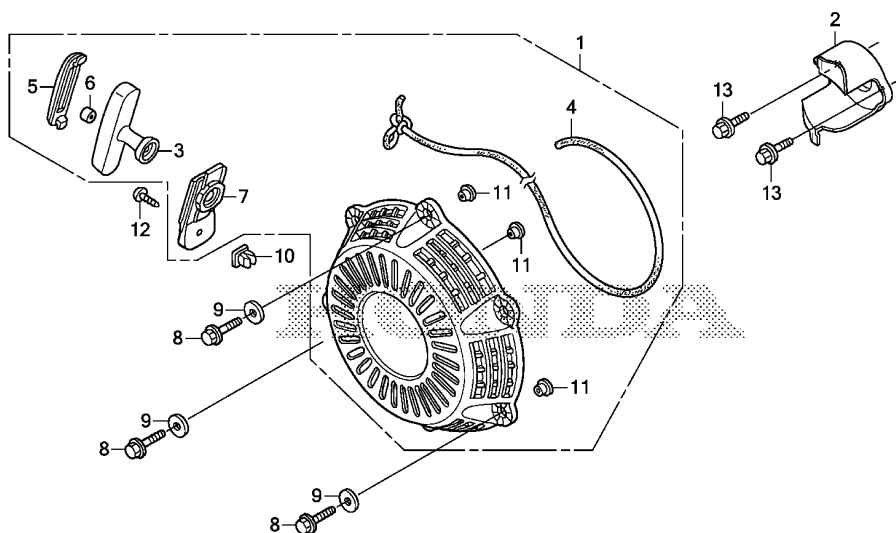
**E 7**



Ref. No.	L.O.N.	(Relative ref. Number) Description	F.R.T.
1	3101M0	RUBBER B, TANK MOUNTING .....	0.3
2	6201D0	SPARK UNIT, GENERATOR .....	0.3
3	6221F7	INVERTER UNIT, GENERATOR .....	0.8
4	6221A9	CONSENT, DIRECT CURRENT .....	0.3
5	6111D3	HARNESS, SUB WIRE .....	0.5
6	6221P3	SOCKET, COMPOSITE .....	0.2
7	6111B9	HARNESS, CONTROL WIRE .....	0.7
8	6221K5	RECEPTACLE/CONSENT, CONTROL PANEL (A) .....	0.3
	6221J3	RECEPTACLE/CONSENT, CONTROL PANEL (A) : ALL .....	0.4
9	6221N9	PANEL, GENERATOR CONTROL .....	0.7
10	6221C5	MARK, CONTROL PANEL .....	0.7
12	6151E5	SWITCH, AUTO THROTTLE .....	0.2

Ref. No.	Part No.	Description	Reqd. QTY		Serial No.	Parts catalogue code
			EU	20i		
1	17533-Z07-000	RUBBER B, TANK MOUNTING .....	2	-----	-----	LB,SB
2	30400-Z07-013	SPARK UNIT .....	1	-----	-----	LB,SB
3	31310-Z07-E21	INVERTER UNIT .....	1	-----	-----	LB
	31310-Z07-F61	.....	1	-----	-----	SB
4	31460-ZT3-C01	CONSENT COMP., D.C. ....	1	-----	-----	LB,SB
5	32105-Z07-W10	HARNESS ASSY., SUB WIRE .....	1	-----	-----	LB
	32105-Z07-S10	.....	1	-----	-----	SB
6	32139-Z07-C00	SOCKET, COMPOSITE .....	2	-----	-----	LB,SB
7	32150-Z07-E20	HARNESS ASSY., CONTROL WIRE ..	1	-----	-----	LB
	32150-Z07-E70	.....	1	-----	-----	SB
8	32330-Z07-W10	RECEPTACLE (20A/250V) .....	2	-----	-----	LB
	32330-ZT3-W10	RECEPTACLE (10A/250V) .....	2	-----	-----	SB
9	32345-Z07-W10	PANEL COMP., CONTROL .....	1	-----	-----	LB,SB
10	32366-Z07-W10	MARK, CONTROL PANEL .....	1	-----	-----	LB
	32366-Z07-S10	.....	1	-----	-----	SB
11	32601-Z07-W10	CABLE, EARTH .....	1	-----	-----	LB,SB
12	36214-ZS9-A01	SWITCH COMP., AUTO-THROTTLE ..	1	-----	-----	LB,SB
13	90002-892-000	BOLT, FLANGE, 5X10 .....	1	-----	-----	LB,SB
14	90019-883-000	BOLT, FLANGE, 5X10 .....	1	-----	-----	LB,SB
15	90101-P4V-010	BOLT, FLANGE, 5X12 .....	3	-----	-----	LB,SB
16	90102-899-003	SCREW, PAN, 5X12 .....	1	-----	-----	LB,SB
17	90108-MN0-000	SCREW, PAN, 5X13 .....	1	-----	-----	LB,SB
18	90581-342-000	WASHER, 20MM .....	3	-----	-----	LB,SB
19	90676-692-000	BAND, 100MM(BLACK) .....	1	-----	-----	LB,SB
20	93500-05008-3J	SCREW, PAN, 5X8 .....	1	-----	-----	LB,SB
21	93913-25480	SCREW, TAPPING, 5X16(P0) .....	4	-----	-----	LB,SB

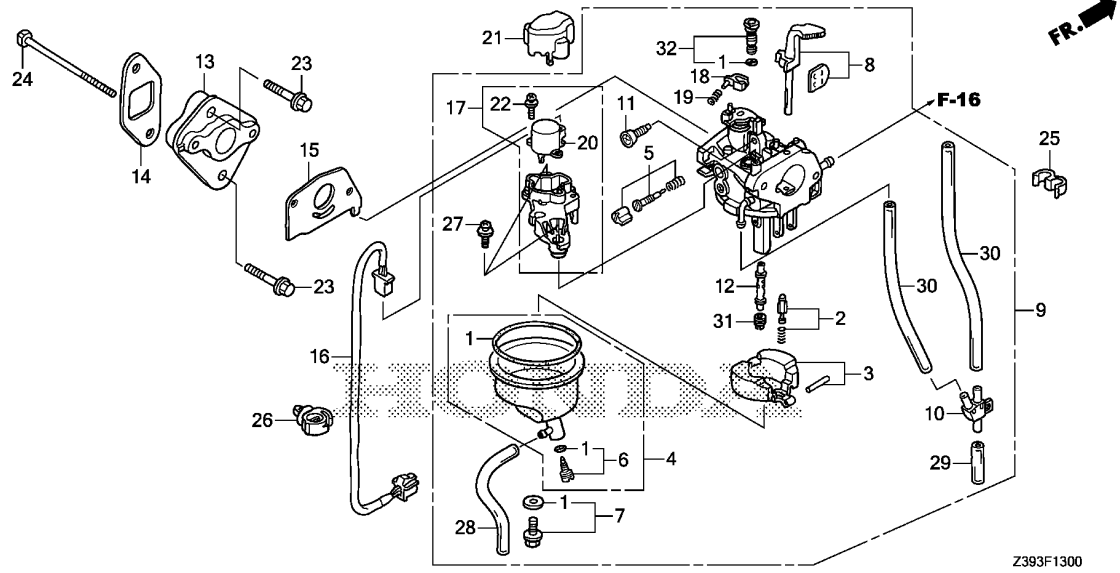
**3**



Z393F0900

Ref. No.	L.O.N.	(Relative ref. Number) Description	F.R.T.
1	1121B9	STARTER, RECOIL .....	0.7
2	1121A9	PULLEY, RECOIL STARTER .....	0.7
3	1121A3	GRIP, RECOIL STARTER .....	0.1
4	1121B3	ROPE, RECOIL STARTER .....	0.9
7	1121D4	GUIDE, RECOIL STARTER ROPE ...	0.1

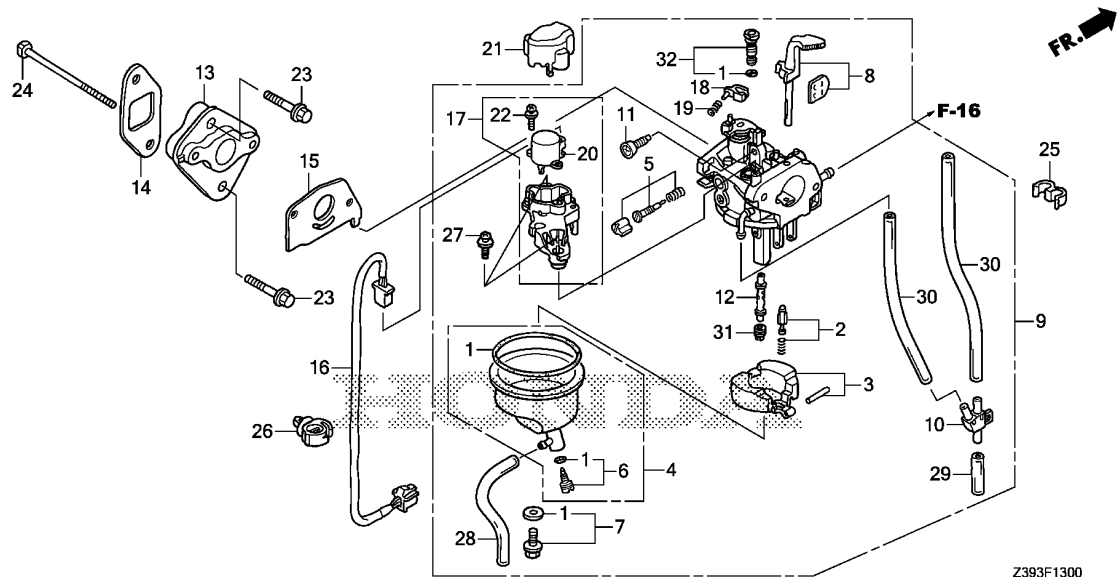
Ref. No.	Part No.	Description	Reqd. QTY	Serial No.	Parts catalogue code
			EU 20i T1		
1	28400-Z07-004	STARTER ASSY., RECOIL .....	1		
2	28451-Z07-004	PULLEY, STARTER .....	1	-----	B,CL,F,GG2,GG3,GW11,GW12,L,LB,LT,RG,RHH6,RHH7,RR4,RR5,RR6,RR7,SB,SK3,SS5 SS6,U,W
3	28461-Z07-004	GRIP, STARTER .....	1		
4	28462-Z07-004	ROPE, STARTER .....	1		
5	28464-Z07-004	COVER, GRIP .....	1		
6	28469-ZE2-W01	REINFORCEMENT, GRIP .....	1		
7	28475-Z07-004	GUIDE, STARTER ROPE .....	1		
8	90022-888-010	BOLT, FLANGE, 6X20(CT200) ...	3	-----	B,CL,F,GG2,GG3,GW11,GW12,L,LB,LT,RG,RHH6,RHH7,RR4,RR5,RR6,RR7,SB,SK3,SS5 SS6,U,W
9	90401-ZA0-000	WASHER, PLAIN, 6.5X15 .....	3	-----	B,CL,F,GG2,GG3,GW11,GW12,L,LB,LT,RG,RHH6,RHH7,RR4,RR5,RR6,RR7,SB,SK3,SS5 SS6,U,W
10	90652-SA5-670	GROMMET, SCREW, 6MM .....	1		
11	91552-Z07-000	COLLAR, RECOIL STARTER .....	3		
12	93913-15480	SCREW, TAPPING, 5X16(PO) ....	1		
13	95701-06012-08	BOLT, FLANGE, 6X12 .....	2	-----	B,CL,F,GG2,GG3,GW11,GW12,L,LB,LT,RG,RHH6,RHH7,RR4,RR5,RR6,RR7,SB,SK3,SS5 SS6,U,W



Z393F1300

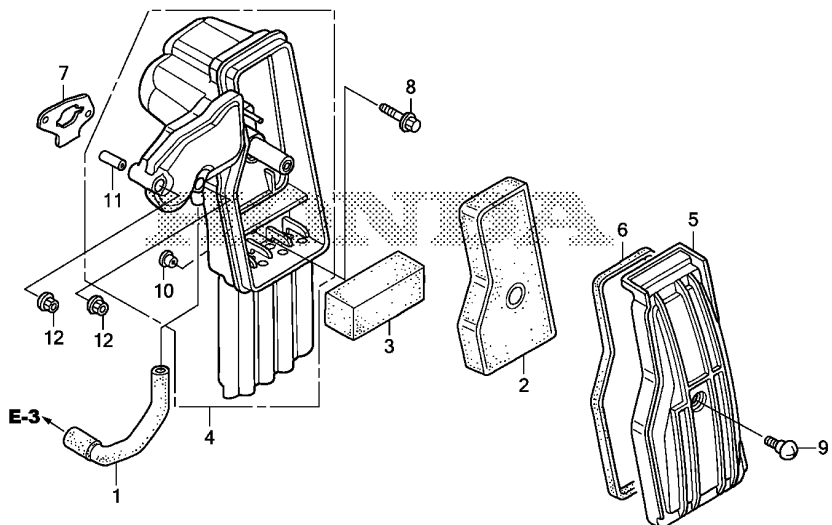
Ref. No.	L.O.N.	(Relative ref. Number) Description	F.R.T.
1	3111B1	GASKET SET, CARBURETOR (3)	0.3
2	3111E1	FLOAT VALVE SET AND/OR FLOAT SET	0.4
4	3111A3	FLOAT CHAMBER SET AND/OR GASKET	0.3
5	3111D7	SCREW SET, PILOT	0.2
9	3111F3	CARBURETOR (14)	0.3
13	3111C0	CARBURETOR INSULATOR AND/OR PACKING	0.3
15	3111C8	PACKING, CARBURETOR	0.3
16	6111H4	SUB CORD, THROTTLE CONTROL MOTOR (20)	0.2
17	6151F0	MOTOR, THROTTLE CONTROL (19)	0.3
18	3111H0	LEVER, CARBURETOR LINK (12)	0.3
31	3111C3	JET, MAIN	0.4

Ref. No.	Part No.	Description	Reqd. QTY		Serial No.	Parts catalogue code
			EU	20i		
1	16010-ZM7-D01	GASKET SET	1			
2	16011-ZE0-005	VALVE SET, FLOAT	1			
3	16013-ZG0-811	FLOAT SET	1			
4	16015-ZM7-003	CHAMBER SET, FLOAT	1			
5	16016-ZH7-W01	SCREW SET, PILOT	1			
6	16024-ZB9-005	SCREW SET, DRAIN	1			
7	16028-ZG0-811	SCREW SET	1			
8	16044-ZM7-D01	CHOKE SET	1			
9	16100-Z0D-D03	CARBURETOR ASSY.(BF30E D/E)	1			
10	16112-ZM7-D01	JOINT, AIR VENT TUBE	1			
11	16124-ZE0-005	SCREW, THROTTLE STOP	1			
12	16166-Z0D-D01	NOZZLE, MAIN	1			
13	16211-Z0D-D01	INSULATOR, CARBURETOR	1			
14	16212-Z0D-D00	PACKING, INSULATOR	1			
15	16221-ZG0-801	PACKING, CARBURETOR	1			
16	32196-Z07-E20	CORD ASSY., SUB	1			
17	36160-ZM7-D01	MOTOR ASSY., THROTTLE CONTROL	1			
18	36161-ZL0-D31	LEVER, LINK	1			
19	36162-ZL0-D31	SPRING, COMPRESSION COIL	1			
20	36165-ZL0-D31	MOTOR COMP., THROTTLE CONTROL	1			
21	36168-ZT3-C01	COVER, THROTTLE MOTOR	1			
22	90003-ZL0-D30	SCREW-WASHER, 3X8	2			
23	90004-GHB-670	BOLT, FLANGE, 6X25(NSHF)	2			
24	90010-Z0D-D00	BOLT, HEX., 5X95	2			
25	90601-Z0D-D00	CLAMP, TUBE(7X8)	1			



3

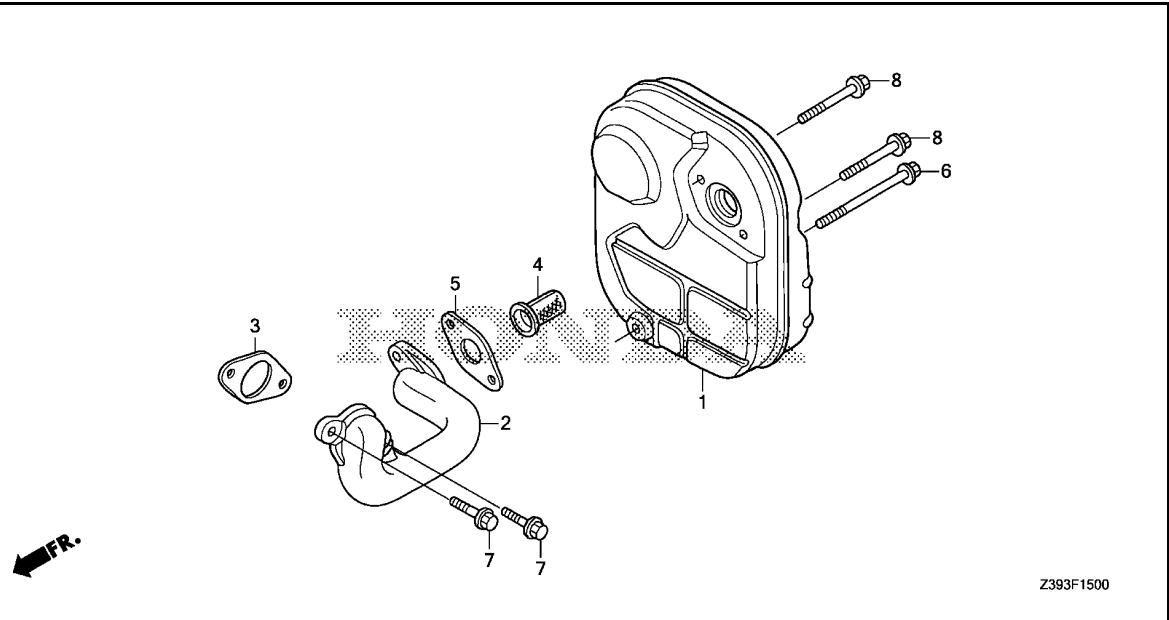
Ref. No.	Part No.	Description	Reqd. QTY		Serial No.	Parts catalogue code
			EU	T1		
26	90683-SA0-003	CLIP, WIRE HARNESS, 25MM	1			
27	93893-04010-18	SCREW-WASHER, 4X10	2			
28	95003-05024-31	TUBE, VINYL, 3.5X6.5X240 (95003-05001-60M)	1			
29	95003-07003-31	TUBE, VINYL, 4X7X30 (95003-07001-60M)	1			
30	95003-07023-31	TUBE, VINYL, 4X7X230 (95003-07001-60M)	2			
31	99101-ZG0-0580	JET, MAIN, #58	(1)			
	99101-ZG0-0600	JET, MAIN, #60	(1)			
	99101-ZG0-0620	JET, MAIN, #62	1			
32	99204-ZE0-0350	JET SET, PILOT, #35	1			



Ref. No.	L.O.N.	(Relative ref. Number) Description	F.R.T.
1	1111K5	TUBE, BREATHER .....	0.1
2	3121B8	ELEMENT, AIR CLEANER .....	0.1
		.INCLUDES: Air cleaner element -inspection	
3	3121C1	FILTER, OUTER .....	0.1
		.INCLUDES: Outer filter-inspection	
4	3121A5	CASE, AIR CLEANER .....	0.2
6	3121E9	SEAL, AIR CLEANER COVER .....	0.1
7	3121K0	PACKING, AIR INTAKE JOINT .....	0.2

Ref. No.	Part No.	Description	Reqd. QTY	Serial No.	Parts catalogue code
			EU 20i T1		
1	15721-Z07-000	TUBE, BREATHER .....	1		
2	17211-Z07-000	ELEMENT, AIR CLEANER .....	1		
3	17218-Z07-000	FILTER, OUTER .....	1		
4	17220-Z07-010	CASE COMP., AIR CLEANER .....	1		
5	17231-Z07-000	COVER, AIR CLEANER .....	1		
6	17233-Z07-000	SEAL A, AIR CLEANER COVER ...	1		
7	17274-ZT3-000	PACKING, AIR INTAKE JOINT ...	1		
8	90012-892-000	BOLT, FLANGE, 5X16 .....	1		
9	90102-Z07-003	SCREW, SPECIAL, 6X16 .....	1		
10	90129-463-770	COLLAR, REFLECTOR SETTING ...	1		
11	91551-Z07-000	COLLAR, AIR CLEANER .....	2		
12	94050-05080	NUT, FLANGE, 5MM .....	2		



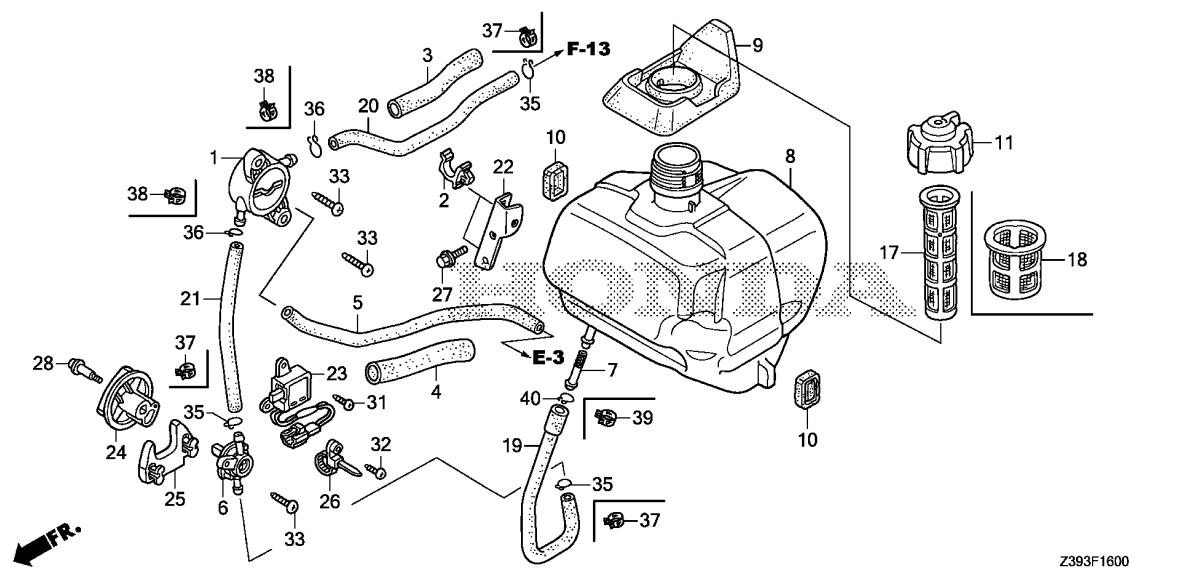


Ref. No.	L.O.N.	(Relative ref. Number) Description	F.R.T.
1	3131C5	MUFFLER, EXHAUST .....	0.2
2	3131C9	PIPE, EXHAUST .....	0.9
3	3131B5	GASKET, EXHAUST PIPE .....	0.9
4	3131A1	ARRESTER, SPARK .....	0.2
		.INCLUDES: Spark arrester check	
5	3131B4	GASKET, EXHAUST MUFFLER .....	0.2

Z393F1500

3

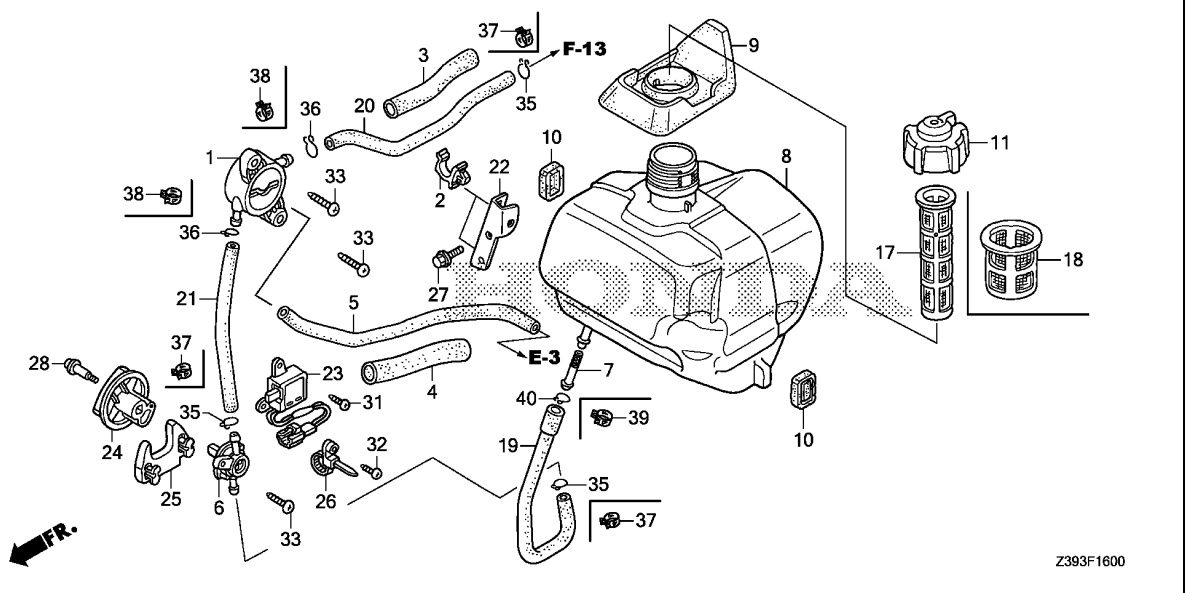
Ref. No.	Part No.	Description	Reqd. QTY	Serial No.	Parts catalogue code
			EU 20i T1		
1	18310-Z07-C21	MUFFLER COMP. ....	1		
2	18331-Z07-000	PIPE, EX. ....	1		
3	18333-Z07-010	GASKET, EX. PIPE .....	1		
4	18355-888-810	ARRESTER, SPARK .....	1	----- HP	
5	18382-ZC0-000	GASKET, MUFFLER .....	1		
6	90015-ZG0-801	BOLT, FLANGE, 6X65 .....	1		
7	90018-ZE1-000	BOLT, FLANGE, 6X23(CT200) ...	2		
8	95701-06045-08	BOLT, FLANGE, 6X45 .....	2		



Ref. No.	L.O.N.	(Relative ref. Number) Description	F.R.T.
1	3101H9	PUMP, FUEL .....	0.6
5	3101E5	TUBE, DIAPHRAGM .....	0.2
6	3101A3	COCK, FUEL .....	0.4
7	3101H8	STRAINER, FUEL .....	0.6
8	3101H7	TANK, FUEL .....	0.6
9	4141F1	SEAL, FUEL FILLER NECK .....	0.4
10	3101M3	RUBBER A, TANK MOUNTING .....	0.5
11	3101V2	CAP, FUEL TANK .....	0.1
17		(18)	
	3101A6	FILTER, FUEL .....	0.1
19	3101F1	TUBE, FUEL TANK .....	0.5
20	3101L0	TUBE A, FUEL .....	0.2
21	3101F7	TUBE B, FUEL .....	0.5
23	6151D9	SWITCH, ENGINE STOP .....	0.4
24	8101T9	KNOB, ENGINE SWITCH .....	0.6
25	4131N8	PLATE, ENGINE SWITCH .....	0.6

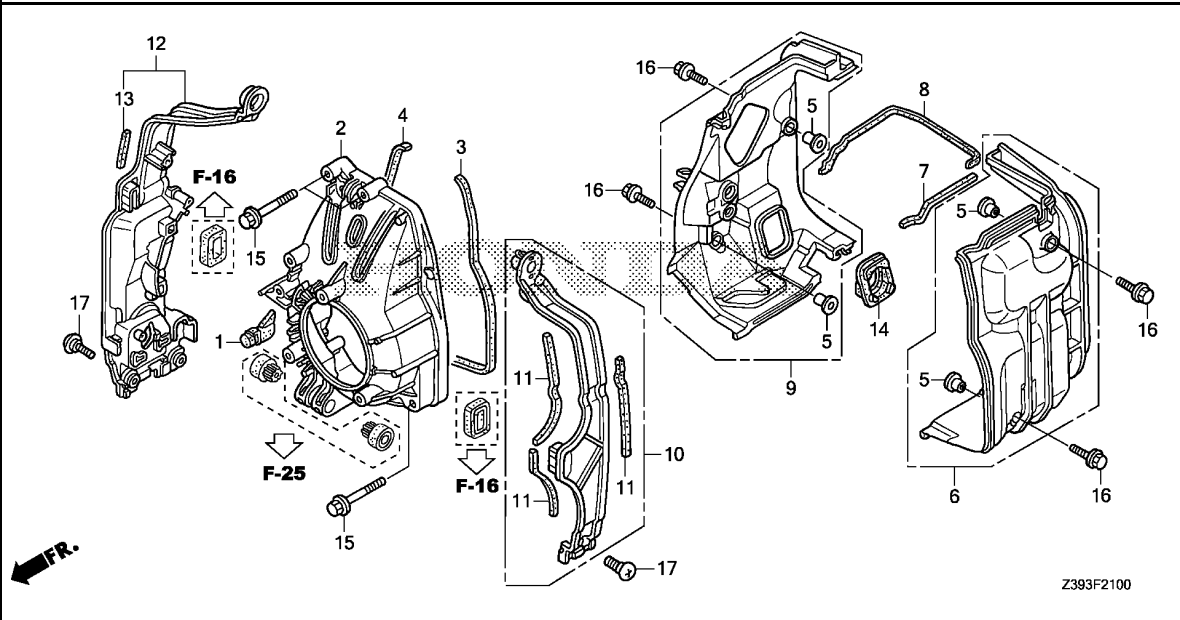
Ref. No.	Part No.	Description	Reqd. QTY	Serial No.	Parts catalogue code
			EU 20i T1		
1	16700-ZT3-013	PUMP ASSY., FUEL .....	1		
2	16731-ZE2-003	CLIP, TUBE .....	2		
3	16854-Z07-000	RUBBER A, SUPPORTER .....	1		
4	16857-ZT3-000	RUBBER B, SUPPORTER .....	1		
5	16882-Z07-000	TUBE, DIAPHRAGM .....	1		
6	16950-ZT3-003	COCK ASSY., FUEL .....	1		
7	16952-ZA8-800	STRAINER, FUEL .....	1		
8	17511-Z07-000	TANK, FUEL .....	1	-----	B,CL,F,GG2,GG3,GW11,GW12,L,LB,LT,RG,RHH6,RHH7,RR4,RR5,RR6,RR7,SB,SK3,SS5 SS6,U,W
9	17514-Z07-R30	SEAL, FUEL FILLER NECK .....	1	-----	B,CL,F,GG2,GG3,GW11,GW12,L,LB,LT,RG,RHH6,RHH7,RR4,RR5,RR6,RR7,SB,SK3,SS5 SS6,U,W
	17514-Z07-000	.....	1	-----	HP
10	17532-Z07-000	RUBBER A, TANK MOUNTING .....	2		
11	17620-ZT3-030	CAP ASSY., FUEL TANK .....	1	-----	B,CL,F,GG2,GG3,GW11,GW12,L,LB,LT,RG,RHH6,RHH7,RR4,RR5,RR6,RR7,SB,SK3,SS5 SS6,U,W
17	17670-Z07-000	FILTER COMP., FUEL .....	1	-----	B,CL,F,GG2,GG3,GW11,GW12,L,LB,LT,RG,RHH6,RHH7,RR4,RR5,RR6,RR7,SB,SK3,SS5 SS6,U,W
18	17670-ZC3-700	FILTER COMP., FUEL .....	1	-----	HP
19	17701-Z07-000	TUBE, FUEL TANK .....	1	-----	B,CL,F,GG2,GG3,GW11,GW12,L,LB,LT,RG,RHH6,RHH7,RR4,RR5,RR6,RR7,SB,SK3,SS5 SS6,U,W
	17701-Z07-E31	TUBE, FUEL TANK(FKM) .....	1	-----	HP
20	17702-Z07-000	TUBE A, FUEL .....	1	-----	B,CL,F,GG2,GG3,GW11,GW12,L,LB,LT,RG,RHH6,RHH7,RR4,RR5,RR6,RR7,SB,SK3,SS5 SS6,U,W
	17702-Z07-E31	TUBE A, FUEL(FKM) .....	1	-----	HP
21	17703-Z07-000	TUBE B, FUEL .....	1	-----	B,CL,F,GG2,GG3,GW11,GW12,L,LB,LT,RG,RHH6,RHH7,RR4,RR5,RR6,RR7,SB,SK3,SS5 SS6,U,W





Ref. No.	Part No.	Description	Reqd. QTY		Serial No.	Parts catalogue code
			EU	20i		
21)	17703-Z07-E31	TUBE B, FUEL(FKM)	1		----- HP	
22	17718-Z07-000	BRACKET, FUEL TUBE	1		-----	
23	35120-ZT3-023	SWITCH ASSY., ENGINE STOP	1		-----	
24	35123-Z07-000	KNOB, ENGINE SWITCH	1		-----	B,CL,F,GG2,GG3,GW11,GW12,L,LB,LT,RG,RHH6,RHH7,RR4,RR5,RR6,RR7,SB,SK3,SS5
	35123-Z07-900	-----	1		-----	SS6,U,W
25	35127-Z07-000	PLATE, ENGINE SWITCH	1		----- HP	
26	36135-ZA8-801	BAND, HARNESS	1		-----	
27	90013-883-000	BOLT, FLANGE, 6X12(CT200)	1		-----	
28	90105-ZT3-000	SCREW, PAN, 4X19	1		-----	
31	93901-12320	SCREW, TAPPING, 3X12	1		-----	
32	93901-12420	SCREW, TAPPING, 3X16	1		-----	
33	93913-25520	SCREW, TAPPING, 5X20(PO)	3		-----	
35	95002-02080	CLIP, TUBE(B8)	3		-----	B,CL,F,GG2,GG3,GW11,GW12,L,LB,LT,RG,RHH6,RHH7,RR4,RR5,RR6,RR7,SB,SK3,SS5
					-----	SS6,U,W
36	95002-02100	CLIP, TUBE(B10)	2		-----	B,CL,F,GG2,GG3,GW11,GW12,L,LB,LT,RG,RHH6,RHH7,RR4,RR5,RR6,RR7,SB,SK3,SS5
					-----	SS6,U,W
37	95002-40800-08	CLAMP, TUBE(D8)	3		----- HP	
38	95002-40850-08	CLAMP, TUBE(D8.5)	2		----- HP	
39	95002-41050-08	CLAMP, TUBE(D10.5)	1		----- HP	
40	95002-70000	CLIP, TUBE(C11)	1		-----	B,CL,F,GG2,GG3,GW11,GW12,L,LB,LT,RG,RHH6,RHH7,RR4,RR5,RR6,RR7,SB,SK3,SS5
					-----	SS6,U,W

3



Ref. No.	L.O.N.	(Relative ref. Number) Description	F.R.T.
2	6201C5	(3,4) COVER, GENERATOR COOLING FAN . .INCLUDES: Engine removal and installation	1.0
6	4141D9	SHROUD, ENGINE :LEFT	1.1
8	4141R8	(7) SEAL, SHROUD :UPPER	0.8
9	4141E1	SHROUD, ENGINE :RIGHT	1.1
10	4141R6	(11) FRAME, FAN COVER :LEFT FRONT	0.6
12	4141R7	FRAME, FAN COVER :RIGHT FRONT	0.6
13	4141W6	SEAL, FRAME	0.6

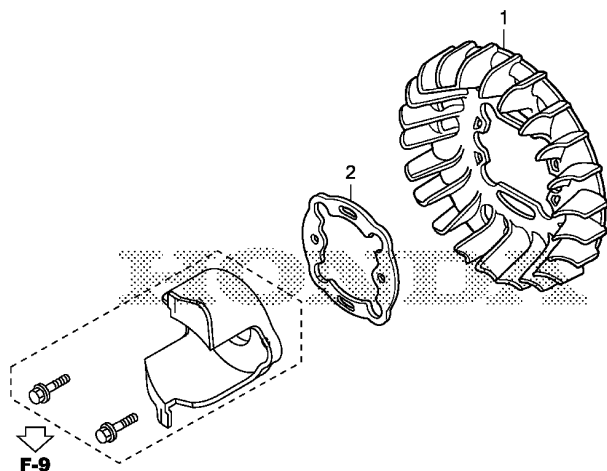
Ref. No.	Part No.	Description	Reqd. QTY	Serial No.	Parts catalogue code
			EU 20i T1		
1	17534-Z07-000	RUBBER, TANK PROTECTOR	1	-----	B,CL,F,GG2,GG3,GW11,GW12,L,LB,LT,RG,RHH6,RHH7,RR4,RR5,RR6,RR7,SB,SK3,SS5,SS6,U,W
2	19611-Z07-405	COVER, FAN	1		
3	19613-Z07-000	SEAL, R. FAN COVER	1		
4	19614-Z07-000	SEAL, L. FAN COVER	1		
5	19619-ZL8-300	COLLAR, FAN COVER	4		
6	19632-Z07-000	SHROUD, R.	1		
7	19636-Z07-000	SEAL, R. SHROUD UPPER	1		
8	19637-Z07-000	SEAL, L. SHROUD UPPER	1		
9	19641-Z07-000	SHROUD, L.	1		
10	50110-Z07-000	FRAME ASSY., R. FR.	1		
11	50112-Z07-000	SEAL, R. FR. FRAME	3		
12	50120-Z07-000	FRAME ASSY., L. FR.	1		
13	50122-Z07-000	SEAL, L. FR. FRAME	2		
14	63713-Z07-000	RUBBER, OIL CHECK	1		
15	90016-ZE8-000	BOLT, FLANGE, 6X45(CT200)	3		
16	90018-ZE1-000	BOLT, FLANGE, 6X23(CT200)	4		
17	90380-GM9-740	SCREW, SPECIAL, 6X15	3		



F-21-10

COOLING FAN

E16



Z393F2110

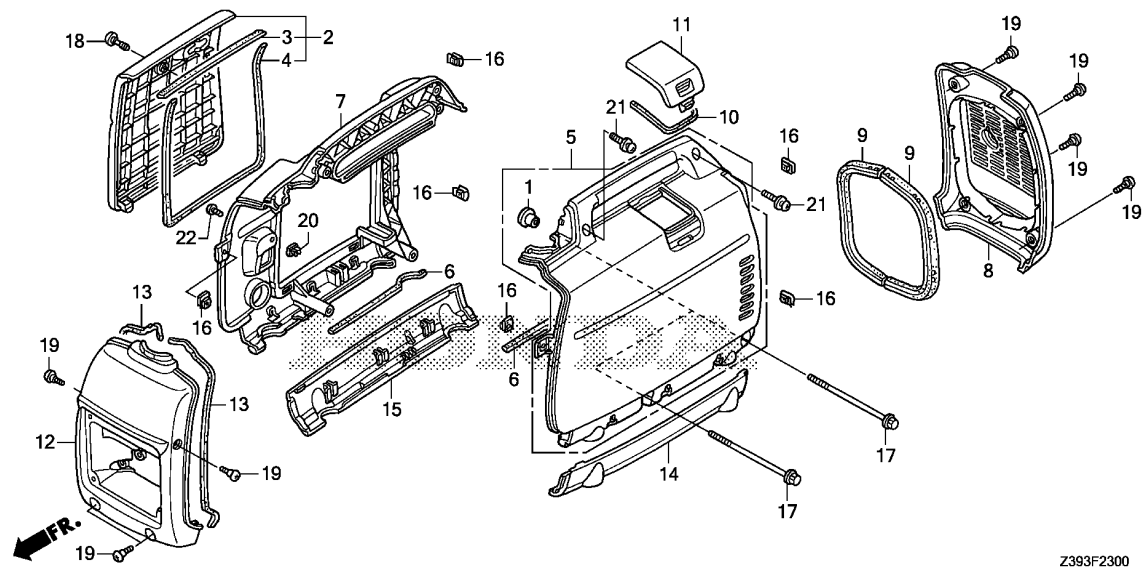
Ref. No.	L.O.N.	(Relative ref. Number) Description	F.R.T.
1	1141G7	FAN, ENGINE COOLING .....	0.9
2	1141H0	PLATE, COOLING FAN SETTING ...	0.9

3

Ref. No.	Part No.	Description	Reqd. QTY	Serial No.	Parts catalogue code
			EU 20i T1		
1	19511-Z07-000	FAN, COOLING .....	1		
2	19513-Z07-000	PLATE, COOLING FAN SETTING ..	1	-----	B,CL,F,GG2,GG3,GW11,GW12,L,LB,LT,RG,RHH6,RHH7,RR4,RR5,RR6,RR7,SB,SK3,SS5,SS6,U,W

F-23

FRONT COVER/SIDE COVER/REAR COVER

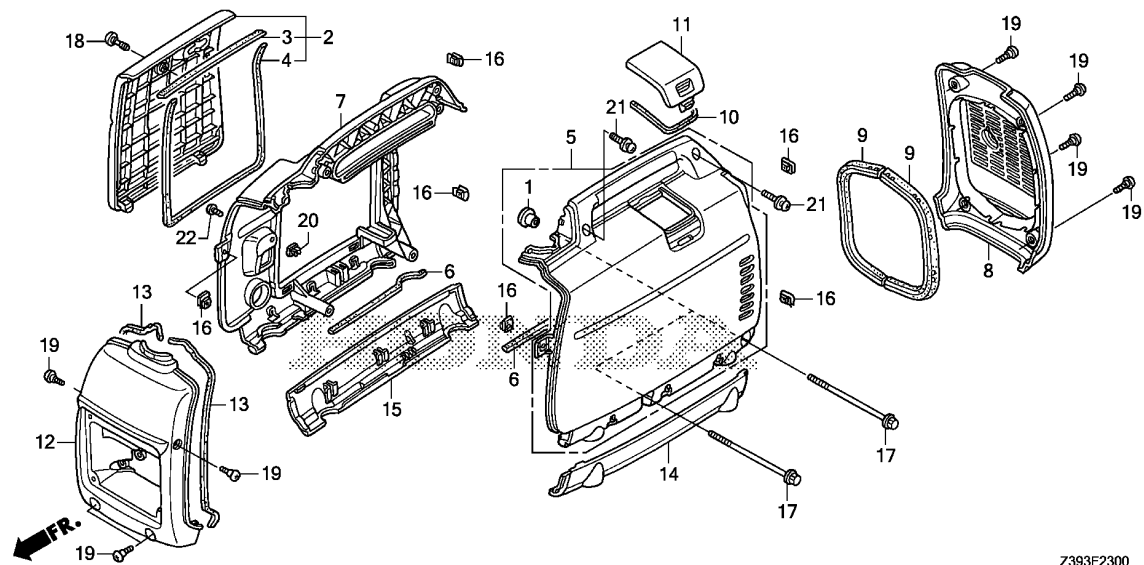


Z393F2300

Ref. No.	L.O.N.	(Relative ref. Number) Description	F.R.T.
2	4131K5	COVER, MAINTENANCE .....	0.1
3	4141L3	SEAL A, MAINTENANCE COVER ....	0.1
4	4141L4	SEAL B, MAINTENANCE COVER ....	0.1
5	4141L6	COVER, GENERATOR SIDE :LEFT ..	0.7
6	4141W7	SEAL A, GENERATOR SIDE COVER :LEFT .....	0.7
	4141W8	SEAL A, GENERATOR SIDE COVER :RIGHT .....	0.6
7	4141L5	COVER, GENERATOR SIDE :RIGHT .	0.6
8	4101E0	COVER, GENERATOR :REAR .....	0.1
9	4141R9	RUBBER, COVER SEAL :REAR .....	0.1
		.NOTE: Same time for two units	
10	4141F2	SEAL, MAINTENANCE COVER PLUG .	0.1
11	4131L7	COVER, SPARK PLUG MAINTENANCE	0.1
12	410107	COVER, GENERATOR :FRONT .....	0.6
13	4141F0	SEAL, GENERATOR COVER :FRONT .	0.6
		.NOTE: Same time for two units	
14	4101N9	PLATE, UNDER :LEFT .....	0.2
15	4101P3	PLATE, UNDER :RIGHT .....	0.2

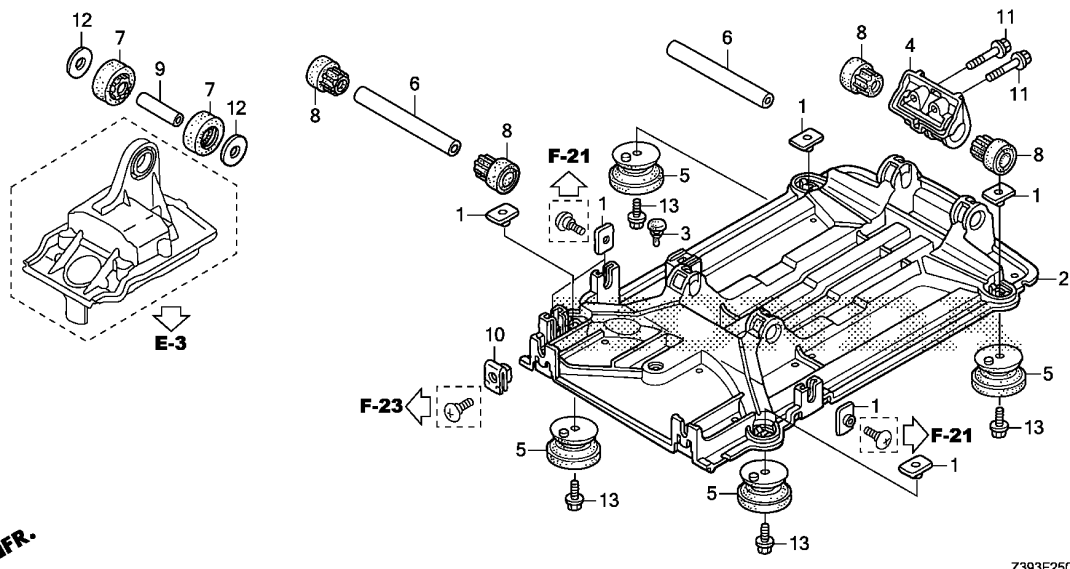
Ref. No.	Part No.	Description	Reqd. QTY	Serial No.	Parts catalogue code
			EU 20i T1		
1	19619-ZL8-300	COLLAR, FAN COVER .....	2		
2	63150-Z07-000ZC	COVER ASSY., MAINTENANCE *R280*.....POWER RED	1	-----	B,CL,F,GG2,GG3,GW11,GW12,L,LB,LT,RG,RHH6,RHH7,RR4,RR5,RR6,RR7,SB,SK3,SS5 SS6,U,W HP
	63150-Z07-000ZD	*T95*.....HOLMATRO ORANGE	1	-----	HP
3	63153-Z07-000	SEAL A, MAINTENANCE COVER ...	1		
4	63154-Z07-000	SEAL B, MAINTENANCE COVER ...	1		
5	63210-Z07-C20ZA	COVER COMP., R. SIDE *R280*.....POWER RED	1	-----	B,CL,F,GG2,GG3,GW11,GW12,L,LB,LT,RG,RHH6,RHH7,RR4,RR5,RR6,RR7,SB,SK3,SS5 SS6,U,W HP
	63210-Z07-C20ZC	*T95*.....HOLMATRO ORANGE	1	-----	HP
6	63218-Z07-000	SEAL A, SIDE COVER .....	2		
7	63220-Z07-C20ZA	COVER COMP., L. SIDE *R280*.....POWER RED	1	-----	B,CL,F,GG2,GG3,GW11,GW12,L,LB,LT,RG,RHH6,RHH7,RR4,RR5,RR6,RR7,SB,SK3,SS5 SS6,U,W HP
	63220-Z07-C20ZC	*T95*.....HOLMATRO ORANGE	1	-----	HP
8	63311-Z07-000ZA	COVER, RR. *NH314*.....CONDUCT GRAY	1		
9	63318-Z07-000	RUBBER, RR. COVER SEAL .....	2		
10	63344-Z07-000	SEAL, PLUG CHECK .....	1		
11	63347-Z07-000ZC	COVER, PLUG CHECK *R280*.....POWER RED	1	-----	B,CL,F,GG2,GG3,GW11,GW12,L,LB,LT,RG,RHH6,RHH7,RR4,RR5,RR6,RR7,SB,SK3,SS5 SS6,U,W HP
	63347-Z07-000ZD	*T95*.....HOLMATRO ORANGE	1	-----	HP
12	63511-Z07-000ZA	COVER, FR. *NH314*.....CONDUCT GRAY	1	-----	B,CL,F,GG2,GG3,GW11,GW12,L,LB,LT,RG,RHH6,RHH7,RR4,RR5,RR6,RR7,SB,SK3,SS5 SS6,U,W





Z393F2300

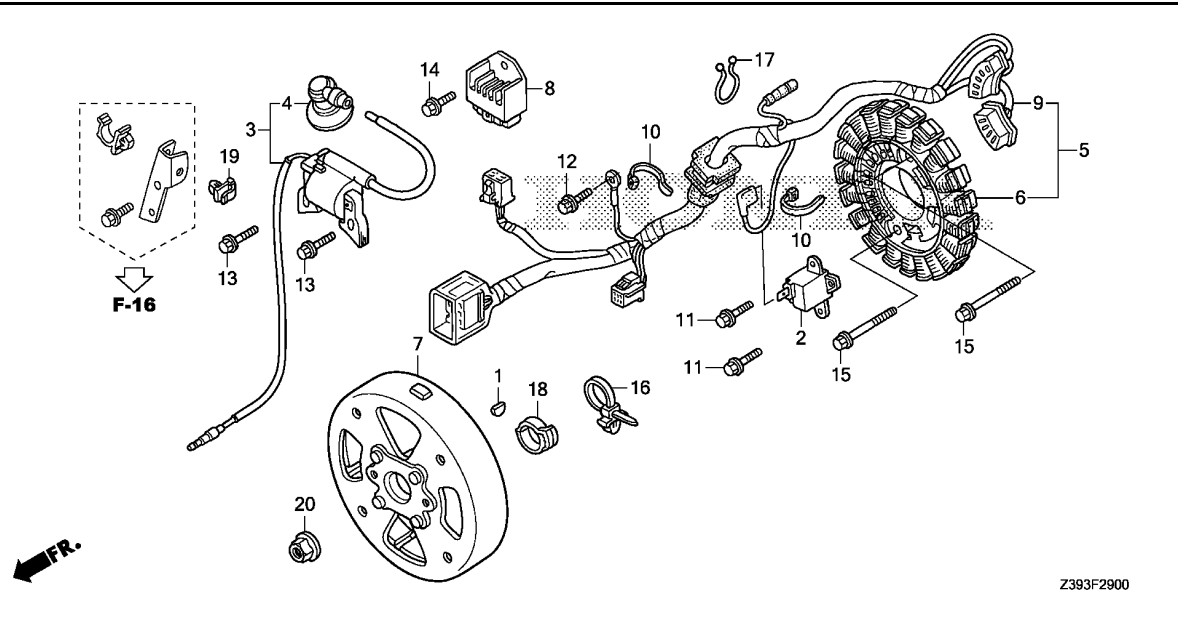
Ref. No.	Part No.	Description	Reqd. QTY		Serial No.	Parts catalogue code
			EU	20i		
13	63512-Z07-000	SEAL, FR. COVER .....	2			
14	63724-Z07-000ZA	PLATE, R. SIDE UNDER *NH314*.....CONDUCT GRAY	1			
15	63729-Z07-000ZA	PLATE, L. SIDE UNDER *NH314*.....CONDUCT GRAY	1			
16	84601-HA7-670	NUT, FENDER SETTING .....	6			
17	90013-ZB3-010	BOLT, FLANGE, 6X137 .....	2			
18	90102-Z07-003	SCREW, SPECIAL, 6X16 .....	1			
19	90380-GM9-740	SCREW, SPECIAL, 6X15 .....	8			
20	90652-SA5-670	GROMMET, SCREW, 6MM .....	1			
21	93891-06020-07	SCREW-WASHER, 6X20 .....	2			
22	93913-15480	SCREW, TAPPING, 5X16(PO) ....	1			



Ref. No.	L.O.N.	(Relative ref. Number) Description	F.R.T.
2	4131L5	COVER, ENGINE UNDER ..... .INCLUDES: Engine removal and installation	1.0
4	4101C3	BRACKET, ENGINE MOUNTING .....	0.7
5	4101V0	RUBBER, BOTTOM :LEFT FRONT ... .NOTE: Same time for two units	0.1
	4101V1	RUBBER, BOTTOM :RIGHT FRONT .. .NOTE: Same time for two units	0.1
	4101V3	RUBBER, BOTTOM :LEFT REAR .... .NOTE: Same time for two units	0.1
	4101V4	RUBBER, BOTTOM :RIGHT REAR ... .NOTE: Same time for two units	0.1
7	4131W5	INSULATOR, UPPER :LEFT .....	0.5
	4131W6	INSULATOR, UPPER :RIGHT .....	0.5
	4131W7	INSULATOR, LOWER :LEFT FRONT . .NOTE: Same time for two units	0.7
	4131W8	INSULATOR, LOWER :RIGHT FRONT . .NOTE: Same time for two units	0.7
	4131W9	INSULATOR, LOWER :LEFT REAR .. .NOTE: Same time for two units	0.7
	4131X0	INSULATOR, LOWER :RIGHT REAR . .NOTE: Same time for two units	0.7

Ref. No.	Part No.	Description	Reqd. QTY		Serial No.	Parts catalogue code
			EU	20i		
				T1		
1	61304-HB3-003	NUT, SPECIAL, 6MM .....	7			
2	63711-Z07-000	COVER, UNDER .....	1			
3	64264-438-850	GROMMET, PAD SETTING .....	1			
4	68322-Z07-000	BRACKET, ENGINE MOUNTING .....	1			
5	68325-Z07-003	RUBBER, BOTTOM .....	4			
6	68333-Z07-000	COLLAR A, INSULATOR .....	2			
7	68335-Z07-000	INSULATOR, UPPER .....	2			
8	68338-Z07-000	INSULATOR, LOWER .....	4			
9	68339-Z07-000	COLLAR B, INSULATOR .....	1			
10	84601-HA7-670	NUT, FENDER SETTING .....	2			
11	90017-883-000	BOLT, FLANGE, 6X32(CT200) ...	2			
12	90551-033-000	WASHER, SPROCKET SETTING .....	2			
13	95701-06010-08	BOLT, FLANGE, 6X10 .....	4			





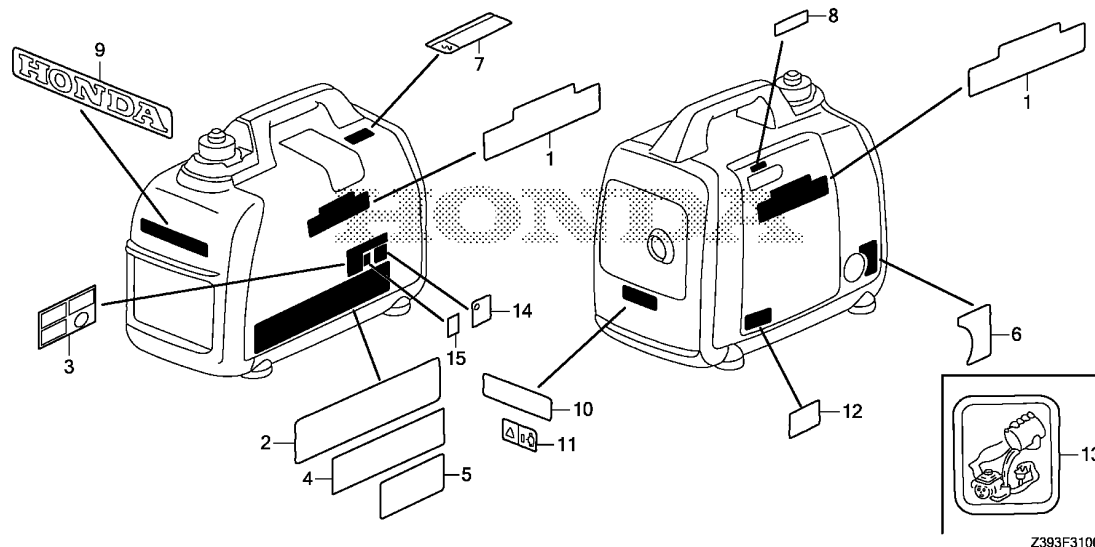
Z393F2900

Ref. No.	L.O.N.	(Relative ref. Number) Description	F.R.T.
2	6141B6	GENERATOR, IGNITION PULSE ..... .INCLUDES: Engine removal and installation	1.0
3	6141A5	COIL, IGNITION(ONE) .....	0.6
4	6141B8	TERMINAL, HIGH TENSION .....	0.1
5	6201B9	STATOR, GENERATOR .....	1.4
		.INCLUDES: Engine removal and installation	
7	6201A9	ROTOR, GENERATOR .....	1.2
		.INCLUDES: Engine removal and installation	
8	6131B7	RECTIFIER, REGULATOR .....	0.3
9	6201B8	HARNESS, GENERATOR WIRE .....	1.4
		.INCLUDES: Engine removal and installation	

3

Ref. No.	Part No.	Description	Reqd. QTY		Serial No.	Parts catalogue code
			EU	20i		
1	13331-ZM7-000	KEY, SPECIAL .....	1			
2	30300-Z07-003	GENERATOR COMP., PULSE .....	1			
3	30500-Z07-023	COIL ASSY., IGNITION .....	1			
4	30700-ZT3-C02	CAP ASSY., NOISE SUPPRESSOR .....	1			
5	31120-Z07-E61	STATOR ASSY. ....	1		B,CL,F,GG2,GG3,GW11,GW12,RG,RHH6,RHH7,W	
	31120-Z07-E21	.....	1		L,LB,LT	
	31120-Z07-E71	.....	1		RR4,RR5,RR6,RR7,SB,SK3,SS5,SS6	
	31120-Z07-E81	.....	1		U	
6	31125-Z07-C61	STATOR COMP. ....	1		B,CL,F,GG2,GG3,GW11,GW12,RG,RHH6,RHH7,W	
	31125-Z07-C31	.....	1		L,LB,LT	
	31125-Z07-C71	.....	1		RR4,RR5,RR6,RR7,SB,SK3,SS5,SS6	
	31125-Z07-C81	.....	1		U	
7	31130-Z07-C01	ROTOR COMP. ....	1			
8	31710-ZS9-A02	RECTIFIER ASSY. ....	1		B,CL,F,GG2,GG3,GW11,GW12,L,LB,LT,RG,RHH6,RHH7,RR4,RR5,RR6,RR7,SB,SK3,SS5,SS6,U,W	
9	32158-Z07-E61	HARNESS ASSY., GENERATOR WIRE .....	1		B,CL,F,GG2,GG3,GW11,GW12,RG,RHH6,RHH7,W	
	32158-Z07-E21	.....	1		L,LB,LT	
	32158-Z07-E71	.....	1		RR4,RR5,RR6,RR7,SB,SK3,SS5,SS6,U	
10	83645-GG0-000	BAND, NYLON .....	2		B,CL,F,GG2,GG3,GW11,GW12,L,LB,LT,RG,RHH6,RHH7,RR4,RR5,RR6,RR7,SB,SK3,SS5,SS6,U,W	
11	90012-ZM3-U30	BOLT, FLANGE, 5X14(CT200) ...	2			
12	90019-883-000	BOLT, FLANGE, 5X10 .....	1		B,CL,F,GG2,GG3,GW11,GW12,L,LB,LT,RG,RHH6,RHH7,RR4,RR5,RR6,RR7,SB,SK3,SS5,SS6,U,W	
13	90022-888-010	BOLT, FLANGE, 6X20(CT200) ...	2			
14	90029-888-000	BOLT, FLANGE, 6X16(CT200) ...	1		B,CL,F,GG2,GG3,GW11,GW12,L,LB,LT,RG,RHH6,RHH7,RR4,RR5,RR6,RR7,SB,SK3,SS5,SS6,U,W	

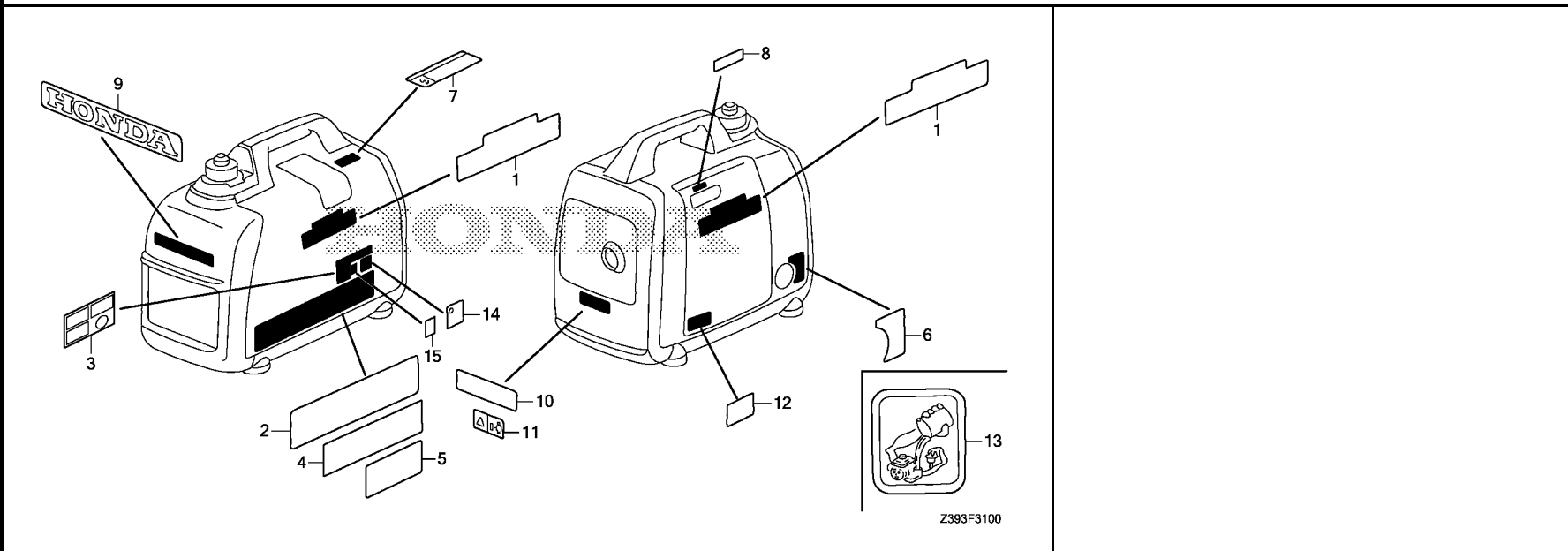




Ref. L.O.N. (Relative ref. Number) F.R.T.  
No. Description

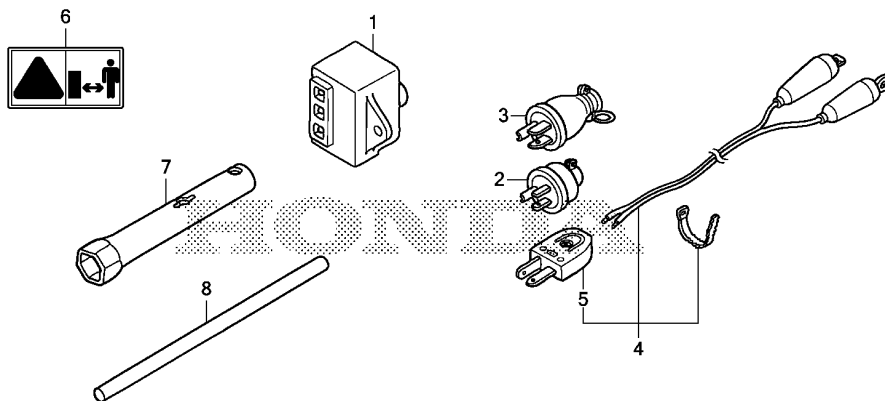
NO INFORMATION .....

Ref. No.	Part No.	Description	Reqd. QTY		Serial No.	Parts catalogue code
			EU	T1		
1	87102-Z07-C62	MARK, EMBLEM .....	2			B,CL,F,GG2,GG3,GW11,GW12,L,LB,LT,RG,RHH6,RHH7,RR4,RR5,RR6,RR7,SB,SK3,SS5,SS6,U,W
2	87114-ZT3-P90	LABEL, WARNING .....	1			CL
3	87150-Z25-A61	MARK, CAUTION(EC) .....	1			RG
4	87150-Z39-D30	MARK, CAUTION .....	1			L
	87150-Z39-S80	.....	1			LT
	87152-Z39-V70	MARK, SPEC .....	1			RG
	87150-Z39-S70	MARK, CAUTION .....	1			RHH6,RHH7
	87150-Z39-D60	.....	1			RR4,RR5,RR6,RR7
	87150-Z39-V30	.....	1			SK3
	87150-Z39-C70	.....	1			SS5,SS6
5	87150-Z39-W10	MARK, CAUTION .....	1			LB
	87150-Z39-S10	.....	1			SB
6	87501-Z07-C60	MARK, ENGINE SWITCH .....	1			B,CL,F,GG2,GG3,GW11,GW12,LB,RG,SB,W
	87501-Z07-C30	.....	1			L,LT,RR4,RR5,RR6,RR7,SK3,SS5,SS6
	87501-Z07-S70	.....	1			RHH6,RHH7
	87501-Z07-C40	.....	1			U
7	87511-ZT3-S20	MARK, CAUTION VOLTAGE .....	1			SK3
8	87528-ZT3-C01	MARK, CHOKE .....	1			B,CL,F,GG2,GG3,GW11,GW12,L,LB,LT,RG,RHH6,RHH7,RR4,RR5,RR6,RR7,SB,SK3,SS5,SS6,U,W
9	87531-Z07-000	MARK, HONDA .....	1			B,CL,F,GG2,GG3,GW11,GW12,L,LB,LT,RG,RHH6,RHH7,RR4,RR5,RR6,RR7,SB,SK3,SS5,SS6,U,W
10	87539-ZT3-C41	MARK, EX. CAUTION .....	1			L,RR4,RR5,RR6,RR7,SS5,SS6,U
	87539-ZT3-S80	.....	1			LT
	87539-ZT3-S50	.....	1			RHH6,RHH7
	87539-ZT3-S70	.....	1			SK3
11	87539-ZT3-C60	MARK, EX. CAUTION .....	1			B,CL,F,GG2,GG3,GW11,GW12,LB,RG,SB,W



Ref. No.	Part No.	Description	Reqd. QTY		Serial No.	Parts catalogue code
			EU	20i		
12	87594-ZT3-010	MARK, OIL CAUTION .....	1		-----	B,CL,F,GG2,GG3,GW11,GW12,L,LB,LT,RG,RHH6,RHH7,RR4,RR5,RR6,RR7,SB,SK3,SS5,SS6,U,W
13	87596-ZT3-D30	MARK, OIL CHECK .....	1		-----	L,LT,RHH6,RHH7,RR4,RR5,RR6,RR7
14	87616-YE9-760	LABEL, NOISE LEVEL(89) .....	1		-----	B,CL,F,GG2,GG3,GW11,GW12,W
15	87709-Z07-S50	MARK, RECYCLE .....	1		-----	GW11,GW12





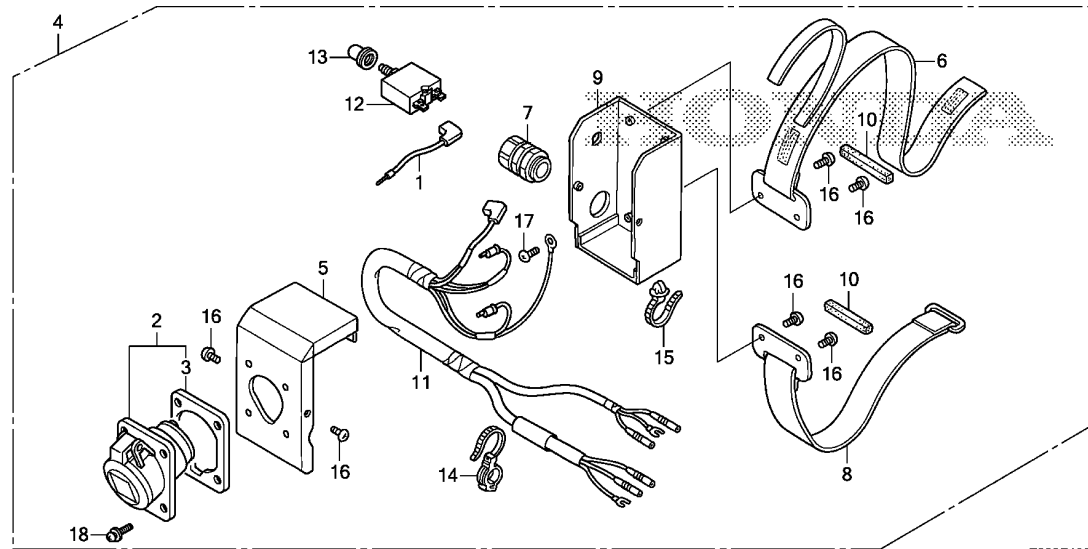
Z393F3200

Ref. L.O.N. (Relative ref. Number) F.R.T.  
No. Description

NO INFORMATION .....

3

Ref. No.	Part No.	Description	Reqd. QTY	Serial No.	Parts catalogue code
			EU 20i T1		
1	30400-Z07-013	SPARK UNIT .....	1	-----	HP
2	32310-812-640	PLUG ASSY., CONSENT .....	2	-----	RHH6,RHH7,RR4,RR5,RR6,RR7,SS5,SS6
3	32310-836-000	PLUG ASSY., CONSENT(15A/125V) .....	2	-----	L,LT
4	32650-892-013	CORD ASSY., CHARGE(2M) .....	(1)	-----	B,CL,F,GG2,GG3,L,LB,LT,RG,RHH6,RHH7,RR4,RR5,RR6,RR7,SB,SK3,SS5,SS6,W
	32650-ZT3-D41	CORD ASSY., CHARGE .....	(1)	-----	GW11,GW12
	32650-892-013	CORD ASSY., CHARGE(2M) .....	1	-----	U
5	32651-892-003	PLUG ASSY., CONSENT .....	(1)	-----	B,CL,F,GG2,GG3,GW11,GW12,L,LB,LT,RG,RHH6,RHH7,RR4,RR5,RR6,RR7,SB,SK3,SS5,SS6,W
			1	-----	U
6	87539-ZT3-C60	MARK, EX. CAUTION .....	1	-----	HP
7	89216-130-690	WRENCH, SPARK PLUG .....	1	-----	
8	89219-805-000	HANDLE, BOX WRENCH .....	1	-----	

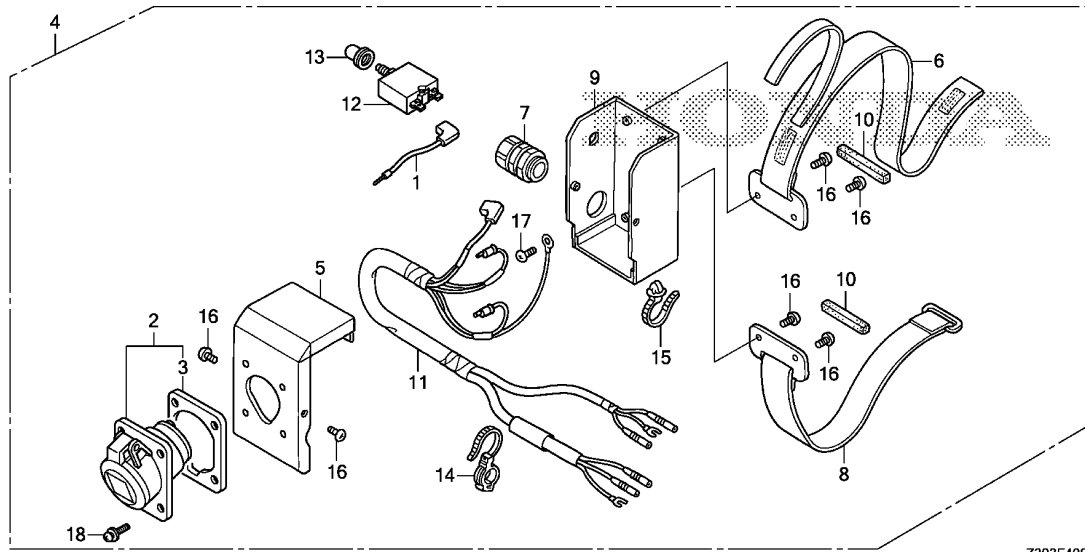


Z393F4000

Ref. L.O.N. (Relative ref. Number) F.R.T.  
No. Description

NO INFORMATION .....

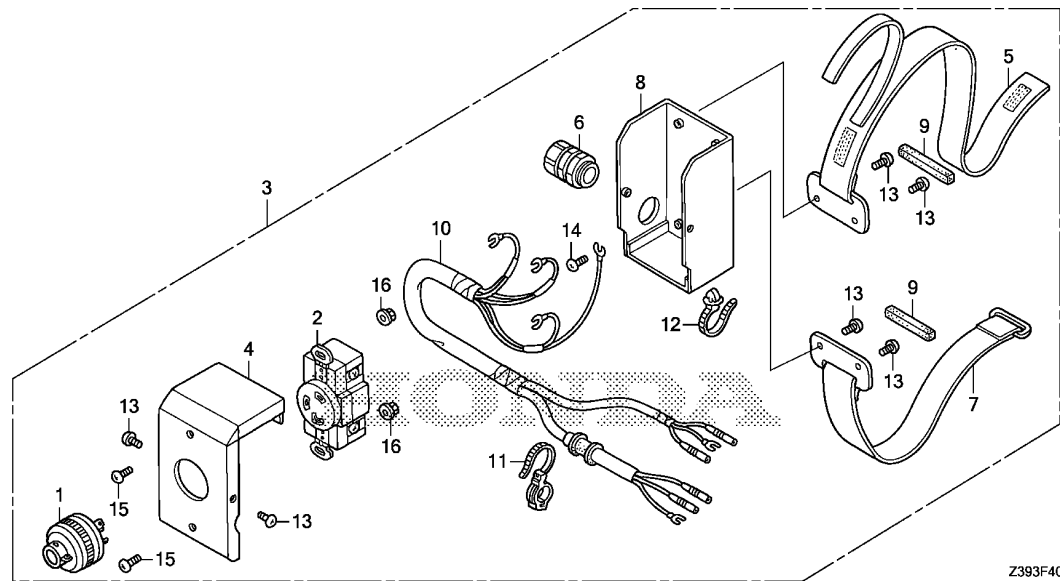
Ref. No.	Part No.	Description	Reqd. QTY		Serial No.	Parts catalogue code
			EU	20i		
1	32222-Z07-C61	CORD, TERMINAL .....	(1)	-----	-----	B,F,W
2	32330-Z11-A90	RECEPTACLE(16A/240V) .....	(1)	-----	-----	GG2,GW12
3	32335-Z11-A90	PACKING .....	(1)	-----	-----	B,F,W
4	32360-Z07-C63	BOX ASSY., CONSENT .....	(1)	-----	-----	GG2,GW12
5	32361-Z07-C62	PANEL, CONSENT .....	(1)	-----	-----	B,F,W
			1	-----	-----	GG2,GW12
6	32362-Z07-003	BELT COMP., CONSENT(A) .....	(1)	-----	-----	B,F,W
			1	-----	-----	GG2,GW12
7	32363-Z07-C61	BUSHING, CABLE .....	(1)	-----	-----	B,F,W
			1	-----	-----	GG2,GW12
8	32364-Z07-003	BELT COMP., CONSENT(B) .....	(1)	-----	-----	B,F,W
			1	-----	-----	GG2,GW12
9	32365-Z07-C61	BOX COMP., CONSENT .....	(1)	-----	-----	B,F,W
			1	-----	-----	GG2,GW12
10	32368-Z07-000	RUBBER, CONSENT BOX .....	(2)	-----	-----	B,F,W
			2	-----	-----	GG2,GW12
11	32371-Z07-C62	HARNESS ASSY., CONSENT WIRE .....	(1)	-----	-----	B,F,W
			1	-----	-----	GG2,GW12
12	38240-Z25-A63	PROTECTOR, CIRCUIT(16A)(WHITE) (TYCO)	(1)	-----	-----	B,F,W
	38240-Z25-F60	PROTECTOR, CIRCUIT(16A)(BLACK) (JOEMEX)	(1)	-----	-----	B,F,W



Z393F4000

3

Ref. No.	Part No.	Description	Reqd. QTY		Serial No.	Parts catalogue code
			EU	T1		
12)	38240-Z25-A63	PROTECTOR, CIRCUIT(16A)(WHITE) (TYCO)	1		-----	GG2,GW12
	38240-Z25-F60	PROTECTOR, CIRCUIT(16A)(BLACK) (JOEMEX)	1		-----	GG2,GW12
13	38242-Z25-A62	COVER COMP., CIRCUIT PROTECTOR	(1)		-----	B,F,W
14	91558-SM4-003	CLIP, TUBE(BLACK)(135MM)	(1)		-----	B,F,W
15	91567-SE0-003	BAND, WIRE HARNESS(WHITE) (93.5MM)	(1)		-----	B,F,W
			1		-----	GG2,GW12
16	93500-05008-1G	SCREW, PAN, 5X8	(6)		-----	B,F,W
			6		-----	GG2,GW12
17	93500-05008-3J	SCREW, PAN, 5X8	(1)		-----	B,F,W
			1		-----	GG2,GW12
18	93893-05020-17	SCREW-WASHER, 5X20	(4)		-----	B,F,W
			4		-----	GG2,GW12



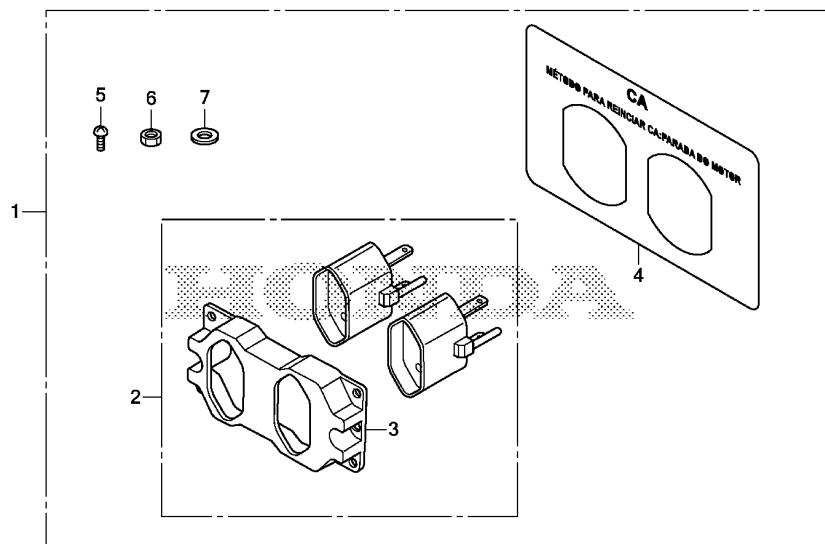
Z393F4001

Ref. No.	L.O.N. (Relative ref. Number)	Description	F.R.T.
----------	-------------------------------	-------------	--------

NO INFORMATION .....

Ref. No.	Part No.	Description	Reqd. QTY		Serial No.	Parts catalogue code
			EU	20i		
1	32310-Z07-C70	PLUG ASSY.(30A-250V)	(1)		L, LB, LT, SB, SS5, SS6, U	
			1		RHH7, RR7	
2	32332-ZB4-E00	CONSENT(30A/250V)	(1)		L, LB, LT, SB, SS5, SS6, U	
			1		RHH7, RR7	
3	32360-Z07-C71	BOX ASSY., CONSENT	(1)		L, LB, LT, SB, SS5, SS6, U	
			1		RHH7, RR7	
4	32361-Z07-C01	PANEL, CONSENT	(1)		L, LB, LT, SB, SS5, SS6, U	
			1		RHH7, RR7	
5	32362-Z07-003	BELT COMP., CONSENT(A)	(1)		L, LB, LT, SB, SS5, SS6, U	
			1		RHH7, RR7	
6	32363-Z07-C01	BUSHING, CABLE	(1)		L, LB, LT, SB, SS5, SS6, U	
			1		RHH7, RR7	
7	32364-Z07-003	BELT COMP., CONSENT(B)	(1)		L, LB, LT, SB, SS5, SS6, U	
			1		RHH7, RR7	
8	32365-Z07-C01	BOX COMP., CONSENT	(1)		L, LB, LT, SB, SS5, SS6, U	
			1		RHH7, RR7	
9	32368-Z07-000	RUBBER, CONSENT BOX	(2)		L, LB, LT, SB, SS5, SS6, U	
			2		RHH7, RR7	
10	32371-Z07-C01	HARNESS ASSY., CONSENT WIRE	(1)		L, LB, LT, SB, SS5, SS6, U	
			1		RHH7, RR7	
11	91558-SM4-003	CLIP, TUBE(BLACK)(135MM)	(1)		L, LB, LT, SB, SS5, SS6, U	
			1		RHH7, RR7	
12	91567-SE0-003	BAND, WIRE HARNESS(WHITE) (93.5MM)	(1)		L, LB, LT, SB, SS5, SS6, U	
			1		RHH7, RR7	
13	93500-05008-1G	SCREW, PAN, 5X8	(6)		L, LB, LT, SB, SS5, SS6, U	
			6		RHH7, RR7	





Z393Y0100

Ref. (Relative ref. Number) F.R.T.  
No. L.O.N. Description

NO INFORMATION .....

Ref. No.	Part No.	Description	Reqd. QTY	Serial No.	Parts catalogue code
			EU 20i T1		
1	06323-Z07-F30	CONSENT KIT .....	(1)	-----	L,SS5,SS6
2	32331-Z07-F30	ADAPTER, RECEPTACLE .....	(1)	-----	L,SS5,SS6
3	32332-Z07-F30	CASE, ADAPTER .....	(1)	-----	L,SS5,SS6
4	32337-Z07-F30	MARK, RECEPTACLE .....	(1)	-----	L,SS5,SS6
5	93500-04010-0G	SCREW, PAN, 4X10 .....	(4)	-----	L,SS5,SS6
6	94001-04000-0S	NUT, HEX., 4MM .....	(4)	-----	L,SS5,SS6
7	94101-04800	WASHER, PLAIN, 4MM .....	(4)	-----	L,SS5,SS6





# PART NO. INDEX

G 2

Part Number	Address	Page	Ref.	Part Number	Address	Page	Ref.	Part Number	Address	Page	Ref.	Part Number	Address	Page	Ref.
38240-Z25-A63	E4	30	17	84000								91000			
	F9	51	12					D3		21	6				
	F10	52	12					D1		19	12				
38240-Z25-F60	E4	30	17	84601-HA7-670	F2	44	16	E12		38	6	91202-KJ9-003	D1	19	13
	F9	51	12					E15		41	15	91301-ZM0-V31	D6	24	14
	F10	52	12					F3		45	11	91302-ZL8-003	D3	21	9
38242-Z25-A62	E4	30	18	87000				E12		38	7	91551-Z07-000	E11	37	11
	F10	52	13					E15		41	16	91552-Z07-000	E8	34	11
				87102-Z07-C62	F6	48	1	E2		28	15	91558-SM4-003	F10	52	14
				87114-ZT3-P90	F6	48	2	E4		30	20		F11	53	11
50000				87150-Z25-A61	F6	48	3	E6		32	14	91567-SE0-003	F10	52	15
				87150-Z39-C70	F6	48	4	E7		33	14		F11	53	12
50110-Z07-000	E15	41	10	87150-Z39-D30	F6	48	4	F4		46	12				
50112-Z07-000	E15	41	11	87150-Z39-D60	F6	48	4	E8		34	8	93000			
50120-Z07-000	E15	41	12	87150-Z39-S10	F6	48	5	F4		46	13				
50122-Z07-000	E15	41	13	87150-Z39-S70	F6	48	4	F4		46	14	93500-03005-0A	D1	19	14
				87150-Z39-S80	F6	48	4	E2		28	16	93500-04010-0G	F13	55	5
				87150-Z39-V30	F6	48	4	E4		30	21	93500-05008-1G	F10	52	16
61000				87150-Z39-W10	F6	48	5	E6		32	15		F11	53	13
				87152-Z39-V70	F6	48	4	E7		33	15	93500-05008-3J	E2	28	21
61304-HB3-003	F3	45	1	87501-Z07-C30	F6	48	6	F5		47	15		E4	30	26
				87501-Z07-C40	F6	48	6	E2		28	17		E6	32	20
63000				87501-Z07-C60	F6	48	6	E4		30	22		E7	33	20
				87501-Z07-S70	F6	48	6	E6		32	16		F10	52	17
63150-Z07-000ZC	F1	43	2	87511-ZT3-S20	F6	48	7	E7		33	16		F12	54	14
63150-Z07-000ZD	F1	43	2	87528-ZT3-C01	F6	48	8	E11		37	9	93500-05012-1G	F12	54	15
63153-Z07-000	F1	43	3	87531-Z07-000	F6	48	9	F2		44	18	93500-05016-3J	E4	30	27
63154-Z07-000	F1	43	4	87539-ZT3-C41	F6	48	10	E14		40	28	93600-04012-0G	E4	30	28
63210-Z07-C20ZA	F1	43	5	87539-ZT3-C60	F6	48	11	E2		28	18	93600-04020-0G	E6	32	21
63210-Z07-C20ZC	F1	43	5					E4		30	23	93891-06020-07	F2	44	21
63218-Z07-000	F1	43	6					E6		32	17	93893-04010-18	E10	36	27
63220-Z07-C20ZA	F1	43	7	87539-ZT3-S50	F6	48	10	E7		33	17	93893-05020-17	F10	52	18
63220-Z07-C20ZC	F1	43	7	87539-ZT3-S70	F6	48	10					93901-12320	E14	40	31
63311-Z07-000ZA	F1	43	8	87539-ZT3-S80	F6	48	10	D3		21	7	93901-12420	E14	40	32
63318-Z07-000	F1	43	9	87594-ZT3-010	F7	49	12	E11		37	10	93913-15480	E8	34	12
63344-Z07-000	F1	43	10	87596-ZT3-D30	F7	49	13	D6		24	13		F2	44	22
63347-Z07-000ZC	F1	43	11	87616-YE9-760	F7	49	14	E15		41	17	93913-25480	E2	28	22
63347-Z07-000ZD	F1	43	11	87709-Z07-S50	F7	49	15	F2		44	19		E4	30	29
63511-Z07-000ZA	F1	43	12					E8		34	9		E6	32	22
63512-Z07-000	F2	44	13	89000				F3		45	12		E7	33	21
63711-Z07-000	F3	45	2					D5		23	6	93913-25520	E14	40	33
63713-Z07-000	E15	41	14	89216-130-690	F8	50	7	E2		28	19				
63724-Z07-000ZA	F2	44	14	89219-805-000	F8	50	8	E4		30	24				
63729-Z07-000ZA	F2	44	15					E6		32	18	94000			
				90000				E7		33	18				
64000								E9		35	25	94001-04000-0S	F13	55	6
				90001-ZM7-000	D5	23	5	D3		21	8	94050-04000	E4	30	30
64264-438-850	F3	45	3	90002-892-000	E2	28	14	E8		34	10		E6	32	23
					E4	30	19	F2		44	20	94050-04080	E2	28	23
68000					E6	32	13	E2		28	20	94050-05000	F12	54	16
					E7	33	13	E4		30	25	94050-05080	E11	37	12
68322-Z07-000	F3	45	4	90003-ZL0-D30	E9	35	22	E6		32	19	94050-12080	F5	47	20
68325-Z07-003	F3	45	5	90004-GHB-670	E9	35	23	E7		33	19	94101-04800	F13	55	7
68333-Z07-000	F3	45	6	90008-ZM7-000	D1	19	10	F5		47	16	94101-05000	E4	30	31
68335-Z07-000	F3	45	7	90010-Z0D-D00	E9	35	24	F5		47	17	94101-06800	D3	21	10
68338-Z07-000	F3	45	8	90012-333-000	D6	24	12	F5		47	18	94111-05000	E5	31	32
68339-Z07-000	F3	45	9	90012-892-000	E11	37	8	E10		36	26	94301-08200	D3	21	11
				90012-ZM3-U30	F4	46	11	F5		47	19				
83000				90013-883-000	E14	40	27					95000			
				90013-ZB3-010	F2	44	17								
83645-G60-000	F4	46	10	90014-952-000	D1	19	11					95002-02080	E14	40	35

4

# PART NAME INDEX

H 1

Part name	Address	Page	Ref.	Part name	Address	Page	Ref.	Part name	Address	Page	Ref.
[ A ]											
ADAPTER, RECEPTACLE .....	F13	55	2	BOLT, FLANGE, 6X32 .....	F3	45	11	CORD, TERMINAL .....	E3	29	9
ARM, EX. VALVE ROCKER .....	D6	24	6	BOLT, FLANGE, 6X45 .....	E12	38	8		F9	51	1
ARM, IN. VALVE ROCKER .....	D6	24	5		E15	41	15	COVER ASSY., CRANKCASE .....	D3	21	1
ARRESTER, SPARK .....	E12	38	4	BOLT, FLANGE, 6X65 .....	E12	38	6	COVER ASSY., MAINTENANCE .....	F1	43	2
				BOLT, HEX., 5X95 .....	E9	35	24	COVER COMP. A, BREATHER .....	D1	19	5
				BOX ASSY., CONSENT .....	F9	51	4	COVER COMP. B, BREATHER .....	D1	19	6
					F11	53	3	COVER COMP., CIRCUIT PROTECTOR	E4	30	18
				BOX COMP., CONSENT .....	F9	51	9		F10	52	13
					F11	53	8	COVER COMP., L. SIDE .....	F1	43	7
				BRACKET, ENGINE MOUNTING .....	F3	45	4	COVER COMP., R. SIDE .....	F1	43	5
				BRACKET, FUEL TUBE .....	E14	40	22	COVER, AIR CLEANER .....	E11	37	5
				BUSHING, CABLE .....	F9	51	7	COVER, FAN .....	E15	41	2
					F11	53	6	COVER, FR. ....	F1	43	12
				[ C ]				COVER, GRIP .....	E8	34	5
				CABLE, BATTERY EARTH .....	E5	31	34	COVER, HEAD .....	D1	19	4
				CABLE, EARTH .....	E7	33	11	COVER, PLUG CHECK .....	F1	43	11
				CAP ASSY., FUEL TANK .....	E13	39	11	COVER, RR. ....	F1	43	8
				CAP ASSY., NOISE SUPPRESSOR ...	F4	46	4	COVER, SOCKET .....	E3	29	6
				CAP ASSY., OIL FILLER .....	D3	21	2	COVER, THROTTLE MOTOR .....	E9	35	21
				CARBURETOR ASSY. ....	E9	35	9	COVER, UNDER .....	F3	45	2
				CASE COMP., AIR CLEANER .....	E11	37	4	CRANKSHAFT COMP. ....	D4	22	1
				CASE, ADAPTER .....	F13	55	3	[ D ]			
				CHAMBER SET, FLOAT .....	E9	35	4	DOWEL PIN, 8X20 .....	D3	21	11
				CHOKE SET .....	E9	35	8	[ E ]			
				CLAMP, TUBE .....	E9	35	25	ELEMENT, AIR CLEANER .....	E11	37	2
					E14	40	37	[ F ]			
								FAN, COOLING .....	E16	42	1
				CLIP, GOVERNOR HOLDER .....	D3	21	8	FILTER COMP., FUEL .....	E13	39	17
				CLIP, PISTON PIN, 13MM .....	D5	23	6				18
				CLIP, TUBE .....	E13	39	2	FILTER, OUTER .....	E11	37	3
					E14	40	35	FLOAT SET .....	E9	35	3
								FRAME ASSY., L. FR. ....	E15	41	12
								FRAME ASSY., R. FR. ....	E15	41	10
				CLIP, WIRE HARNESS .....	F5	47	18	[ G ]			
								GASKET SET .....	E9	35	1
								GASKET, EX. PIPE .....	E12	38	3
				CLIP, WIRE HARNESS, 25MM .....	E10	36	26	GASKET, MUFFLER .....	E12	38	5
				COCK ASSY., FUEL .....	E13	39	6	GENERATOR COMP., PULSE .....	F4	46	2
				COIL ASSY., IGNITION .....	F4	46	3	GRIP, STARTER .....	E8	34	3
				COLLAR A, INSULATOR .....	F3	45	6	GROMMET, PAD SETTING .....	F3	45	3
				COLLAR B, INSULATOR .....	F3	45	9	GROMMET, SCREW, 6MM .....	E8	34	10
				COLLAR, AIR CLEANER .....	E11	37	11		F2	44	20
				COLLAR, FAN COVER .....	E15	41	5	GUIDE ASSY., EX. VALVE .....	D1	19	2
					F1	43	1	GUIDE, IN. VALVE .....	D1	19	3
				COLLAR, RECOIL STARTER .....	E8	34	11	GUIDE, STARTER ROPE .....	E8	34	7
				COLLAR, REFLECTOR SETTING .....	E11	37	10	[ H ]			
				CONSENT .....	F11	53	2	HANDLE, BOX WRENCH .....	F8	50	8
				CONSENT ASSY. ....	E1	27	9	HARNESS ASSY., CONSENT WIRE ...	F9	51	11
				CONSENT COMP., D.C. ....	E1	27	4		F11	53	10
					E3	29	4				
					E6	32	4				
					E7	33	4				
				CONSENT KIT .....	F13	55	1				
				CORD ASSY., CHARGE .....	F8	50	4				
				CORD ASSY., SUB .....	E9	35	16				

# PART NAME INDEX

Part name	Address	Page	Ref.	Part name	Address	Page	Ref.	Part name	Address	Page	Ref.
HARNESS ASSY., CONTROL WIRE ..	E1	27	8	MARK, HONDA .....	F6	48	9	PLUG ASSY., CONSENT .....	F8	50	2
	E3	29	8	MARK, OIL CAUTION .....	F7	49	12				3
	E6	32	7	MARK, OIL CHECK .....	F7	49	13				5
	E7	33	7	MARK, RECEPTACLE .....	F13	55	4	PLUG, SPARK .....	D1	19	15
HARNESS ASSY., GENERATOR WIRE	F4	46	9	MARK, RECYCLE .....	F7	49	15	PROTECTOR, CIRCUIT .....	E4	30	17
HARNESS ASSY., SUB WIRE .....	E1	27	5	MARK, SPEC .....	F6	48	4		F9	51	12
				MOTOR ASSY., THROTTLE CONTROL ..	E9	35	17		F10	52	12
	E3	29	5	MOTOR COMP., THROTTLE CONTROL ..	E9	35	20	PULLEY COMP., CAMSHAFT .....	D6	24	2
	E5	31	33	MUFFLER COMP. ....	E12	38	1	PULLEY, STARTER .....	E8	34	2
	E6	32	5					PUMP ASSY., FUEL .....	E13	39	1
	E7	33	5	[ N ]							
HOLDER, GOVERNOR WEIGHT .....	D3	21	4					[ R ]			
[ I ]				NOZZLE, MAIN .....	E9	35	12	RECEPTACLE .....	E3	29	10
INSULATOR, CARBURETOR .....	E9	35	13	NUT, FENDER SETTING .....	F2	44	16		E7	33	8
INSULATOR, LOWER .....	F3	45	8		F3	45	10		F9	51	2
INSULATOR, UPPER .....	F3	45	7	NUT, FLANGE, 12MM .....	F5	47	20	RECTIFIER ASSY. ....	F4	46	8
INVERTER UNIT .....	E1	27	3	NUT, FLANGE, 4MM .....	E2	28	23	REINFORCEMENT, GRIP .....	E8	34	6
	E3	29	3		E4	30	30	RETAINER, VALVE SPRING .....	D6	24	11
	E6	32	3	NUT, FLANGE, 5MM .....	E11	37	12	RING SET, PISTON .....	D5	23	1
	E7	33	3		F12	54	16	ROD ASSY., CONNECTING .....	D5	23	4
				NUT, HEX., 4MM .....	F13	55	6	ROPE, STARTER .....	E8	34	4
				NUT, SPECIAL, 6MM .....	F3	45	1	ROTOR COMP. ....	F4	46	7
[ J ]				NUT, TAPPET ADJUSTING .....	D6	24	13	RUBBER A, SUPPORTER .....	E13	39	3
JET SET, PILOT, #35 .....	E10	36	32					RUBBER A, TANK MOUNTING .....	E13	39	10
JET, MAIN, #58 .....	E10	36	31	[ O ]				RUBBER B, SUPPORTER .....	E13	39	4
JET, MAIN, #60 .....	E10	36	31	OIL SEAL, 20X32X6 .....	D1	19	13	RUBBER B, TANK MOUNTING .....	E1	27	1
JET, MAIN, #62 .....	E10	36	31	O-RING, 11.8X2.4 .....	D3	21	9		E3	29	1
JOINT, AIR VENT TUBE .....	E9	35	10	O-RING, 6.8X1.9 .....	D6	24	14		E6	32	1
									E7	33	1
[ K ]				[ P ]				RUBBER, BOTTOM .....	F3	45	5
KEY, SPECIAL .....	F4	46	1	PACKING .....	F9	51	3	RUBBER, CONSENT BOX .....	F9	51	10
KNOB, ENGINE SWITCH .....	E14	40	24	PACKING, AIR INTAKE JOINT .....	E11	37	7		F11	53	9
				PACKING, CARBURETOR .....	E9	35	15	RUBBER, OIL CHECK .....	E15	41	14
				PACKING, INSULATOR .....	E9	35	14	RUBBER, RR. COVER SEAL .....	F1	43	9
				PACKING, OIL FILLER CAP .....	D3	21	3	RUBBER, TANK PROTECTOR .....	E15	41	1
				PACKING, RECEPTACLE .....	E3	29	11				
LABEL, NOISE LEVEL .....	F7	49	14	PANEL COMP., CONTROL .....	E1	27	10	[ S ]			
LABEL, WARNING .....	F6	48	2		E3	29	12	SCREW-WASHER, 3X8 .....	E9	35	22
LEVER, LINK .....	E9	35	18					SCREW-WASHER, 4X10 .....	E10	36	27
								SCREW-WASHER, 5X20 .....	F10	52	18
								SCREW-WASHER, 6X20 .....	F2	44	21
					E6	32	9	SCREW SET .....	E9	35	7
					E7	33	9	SCREW SET, DRAIN .....	E9	35	6
					F9	51	5	SCREW SET, PILOT .....	E9	35	5
				PANEL, CONSENT .....	F11	53	4	SCREW, FLAT, 4X12 .....	E4	30	28
					E1	27	11	SCREW, FLAT, 4X20 .....	E6	32	21
				PANEL, CONTROL .....	E3	29	14	SCREW, PAN, 3X5 .....	D1	19	14
					E6	32	10	SCREW, PAN, 4X10 .....	F13	55	5
				PIN, PISTON .....	D5	23	3	SCREW, PAN, 4X19 .....	E14	40	28
				PIPE, BREATHER .....	D1	19	7	SCREW, PAN, 5X12 .....	E2	28	17
				PIPE, EX. ....	E12	38	2		E4	30	22
				PISTON .....	D5	23	2		E6	32	16
				PLATE, COOLING FAN SETTING .....	E16	42	2		E7	33	16
				PLATE, ENGINE SWITCH .....	E14	40	25		F12	54	15
				PLATE, L. SIDE UNDER .....	F2	44	15	SCREW, PAN, 5X13 .....	E2	28	18
				PLATE, R. SIDE UNDER .....	F2	44	14		E4	30	23
				PLATE, STOPPER .....	D1	19	9		E6	32	17
				PLUG ASSY. ....	F11	53	1				

# PART NAME INDEX

Part name	Address	Page	Ref.	Part name	Address	Page	Ref.	Part name	Address	Page	Ref.
SCREW, PAN, 5X13 .....	E7	33	17	SWITCH ASSY., ENGINE STOP .....	E14	40	23				
SCREW, PAN, 5X16 .....	E4	30	27	SWITCH ASSY., OIL LEVEL .....	D3	21	5				
SCREW, PAN, 5X8 .....	E2	28	21	SWITCH COMP., AUTO-THROTTLE ...	E2	28	13				
	E4	30	26		E3	29	16				
	E6	32	20		E6	32	12				
	E7	33	20		E7	33	12				
	F10	52	16	[ T ]							
			17								
	F11	53	13	TANK, FUEL .....	E13	39	8				
	F12	54	14	TUBE A, FUEL .....	E13	39	20				
SCREW, SPECIAL, 6X15 .....	E15	41	17	TUBE B, FUEL .....	E13	39	21				
	F2	44	19		E13	40	21				
SCREW, SPECIAL, 6X16 .....	E11	37	9	TUBE, BREATHER .....	E11	37	1				
	F2	44	18	TUBE, DIAPHRAGM .....	E13	39	5				
SCREW, TAPPET ADJUSTING .....	D6	24	12	TUBE, FUEL TANK .....	E13	39	19				
SCREW, TAPPING, 3X12 .....	E14	40	31	TUBE, VINYL, 3.5X6.5X240 .....	E10	36	28				
SCREW, TAPPING, 3X16 .....	E14	40	32	TUBE, VINYL, 4X7X230 .....	E10	36	30				
SCREW, TAPPING, 5X16 .....	E2	28	22	TUBE, VINYL, 4X7X30 .....	E10	36	29				
	E4	30	29	[ V ]							
	E6	32	22	VALVE SET, FLOAT .....	E9	35	2				
	E7	33	21	VALVE, EX. ....	D6	24	9				
	E8	34	12	VALVE, IN. ....	D6	24	8				
	F2	44	22	VALVE, OIL OUTLET .....	D1	19	8				
SCREW, TAPPING, 5X20 .....	E14	40	33	[ W ]							
SCREW, THROTTLE STOP .....	E9	35	11	WASHER, 20MM .....	E2	28	19				
SEAL A, AIR CLEANER COVER ....	E11	37	6		E4	30	24				
SEAL A, MAINTENANCE COVER ....	F1	43	3		E6	32	18				
SEAL A, SIDE COVER .....	F1	43	6		E7	33	18				
SEAL B, MAINTENANCE COVER ....	F1	43	4	WASHER, PLAIN, 4MM .....	F13	55	7				
SEAL, FR. COVER .....	F2	44	13	WASHER, PLAIN, 5MM .....	E4	30	31				
SEAL, FUEL FILLER NECK .....	E13	39	9	WASHER, PLAIN, 6MM .....	D3	21	10				
SEAL, L. FAN COVER .....	E15	41	4	WASHER, PLAIN, 6.5X15 .....	E8	34	9				
SEAL, L. FR. FRAME .....	E15	41	13	WASHER, SPRING, 5MM .....	E5	31	32				
SEAL, L. SHROUD UPPER .....	E15	41	8	WASHER, SPROCKET SETTING .....	F3	45	12				
SEAL, PLUG CHECK .....	F1	43	10	WRENCH, SPARK PLUG .....	F8	50	7				
SEAL, R. FAN COVER .....	E15	41	3								
SEAL, R. FR. FRAME .....	E15	41	11								
SEAL, R. SHROUD UPPER .....	E15	41	7								
SEAL, VALVE STEM .....	D6	24	1								
SHAFT, CAM PULLEY .....	D6	24	3								
SHAFT, ROCKER ARM .....	D6	24	7								
SHROUD, L. ....	E15	41	9								
SHROUD, R. ....	E15	41	6								
SOCKET .....	E6	32	8								
SOCKET, COMPOSITE .....	E1	27	7								
	E3	29	7								
	E6	32	6								
	E7	33	6								
SPARK UNIT .....	E1	27	2								
	E3	29	2								
	E6	32	2								
	E7	33	2								
	F8	50	1								
SPRING, COMPRESSION COIL .....	E9	35	19								
SPRING, VALVE .....	D6	24	10								
STARTER ASSY., RECOIL .....	E8	34	1								
STATOR ASSY. ....	F4	46	5								
STATOR COMP. ....	F4	46	6								
STRAINER, FUEL .....	E13	39	7								



---

**1**

**FOREWORD INDEX**

---

**2**

**ENGINE GROUP**

---

**3**

**FRAME GROUP**

---

**4**

**PART NUMBER INDEX**

---

**5**

**PART NAME INDEX**

---

**HONDA**  
The Power of Dreams



# PARTS CATALOGUE NEWS

Honda Motor Co., Ltd.  
Customer Service Technology Development Division

## PARTS CATALOGUE - CORRECTED

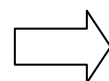
Printed in Japan

CODE NO.	13Z39E01
PARTS CATALOGUE NEWS	EU20iT1
NEWS NO.	001

FRT CORRECTED

### F-21 FAN COVER/SHROUD

Ref. No.	(Relative ref. Number)	Description	FRT
12 4141R7		FRAME, FAN COVER :RIGHT FRONT	0.6



### F-21 FAN COVER/SHROUD

Ref. No.	(Relative ref. Number)	Description	FRT
12 4141R7		FRAME, FAN COVER :RIGHT FRONT	0.8

NOTE A:PART NO. CHANGE D:NEWLY PROVIDED E:PART NO.DELETION K:REQUIRED NO. CORRECTION L:APPLICATION SERIAL NO. CORRECTION  
M:PART DESCRIPTION CORRECTION T:APPLICATION CORRECTION Z:REMARKS CHANGE



# PARTS CATALOGUE NEWS

Honda Motor Co., Ltd.  
Customer Service Technology Development Division

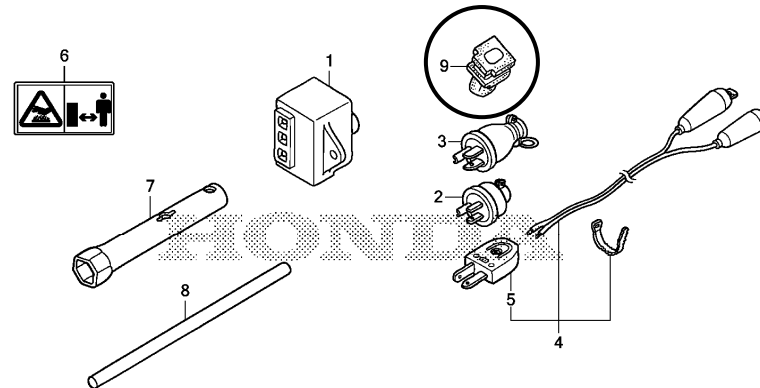
## PARTS CATALOGUE - CORRECTED

Printed in Japan

CODE NO.	13Z39E01
PARTS CATALOGUE NEWS	EU20iT1
NEWS NO.	002

Block No.	Ref. No.	Note	Part No.	Description	Reqd. QTY EU 20i T1	Serial No.	Parts catalogue code
-----------	----------	------	----------	-------------	------------------------------	------------	----------------------

F-32 TOOL/OTHER PARTS



Z393F3200A

F-32	9	D	31472-Z07-C01	GROMMET, MAIN CORD.....	1	-----	HP
------	---	---	---------------	-------------------------	---	-------	----

NOTE A:PART NO. CHANGE D:NEWLY PROVIDED E:PART NO. DELETION K:REQUIRED NO. CORRECTION L:APPLICATION SERIAL NO. CORRECTION  
M:PART DESCRIPTION CORRECTION T:APPLICATION CORRECTION Z:REMARKS CHANGE